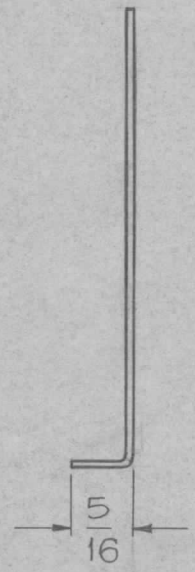
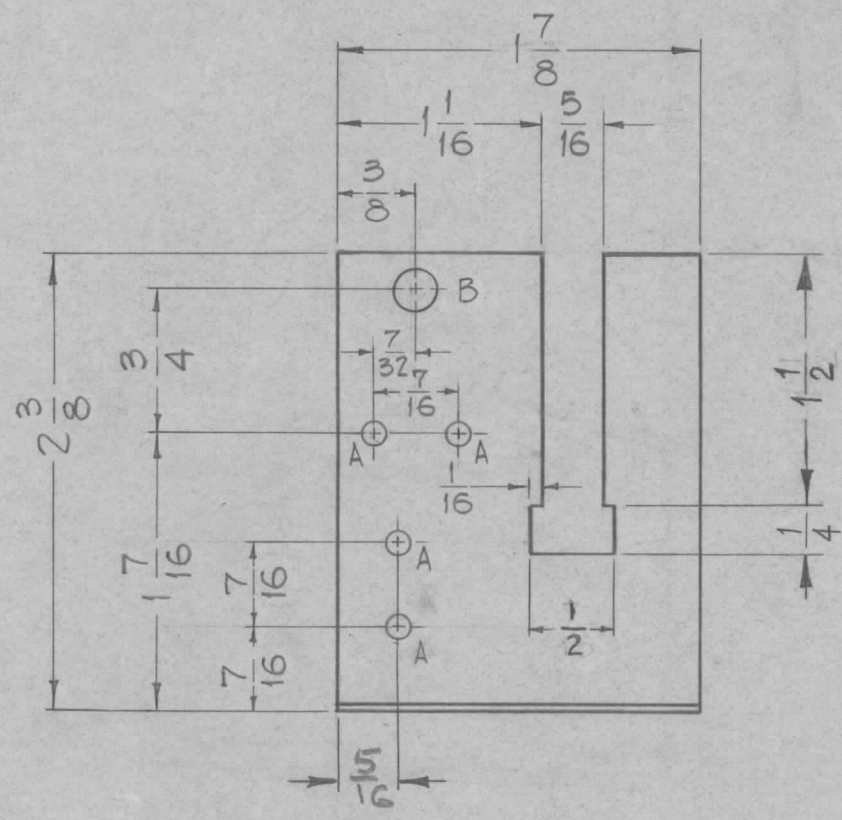


REQ. PER UNIT	USED ON		
	MODEL	ASS'Y. NO.	DATE
1	DVM-2		8-5-60
1	DVM-4		2-8-62

MS-2333 C

A - $\frac{1}{8}$ DIA. 4 REQ.
 B - $\frac{7}{32}$ DIA. 1 REQ.



ISSUE	ITEM	CHANGED FROM	DATE	CH. NO.	DRAFTS	CHECKER	ENG. APP.	REQ. ITEM	PART NO.	DESCRIPTION	SYMBOL			
C	1	1/2 DIM WAS 7/16	10/4/63	10179						THE TECHNICAL MATERIEL CORP. MAMARONECK, NEW YORK PLATE, COMPONENT MOUNTING	C			
B	1	5/16 DIM ADDED ON 'A' HOLES	7-9-63	9522				.029	STOCK SIZE					
A	1	DIMS FOR NOTCH 1/4, 1 1/2 ADDED	6-23-61	5111				COPPER	MATERIAL					
TOLERANCES								SCALE: FULL (DO NOT SCALE)				1/2 H		
DEC. DIM. ± FRAC. DIM. ± 1/64 ANGULAR DIM. ±								MAXIMUM ALLOWABLE TOLERANCES HAVE BEEN DETERMINED AND ANY DEVIATIONS WILL BE CAUSE FOR REJECTION: REMOVE ALL BURRS AND SHARP EDGES				TYPE & TEMPER HOT TIN DIP	HEATTREAT. SPEC.	DRAWN J.C. Biele
								FINISH & SPEC. NO.		ELEC. DES. APP	MECH. DES. APP	MS-2333	C	