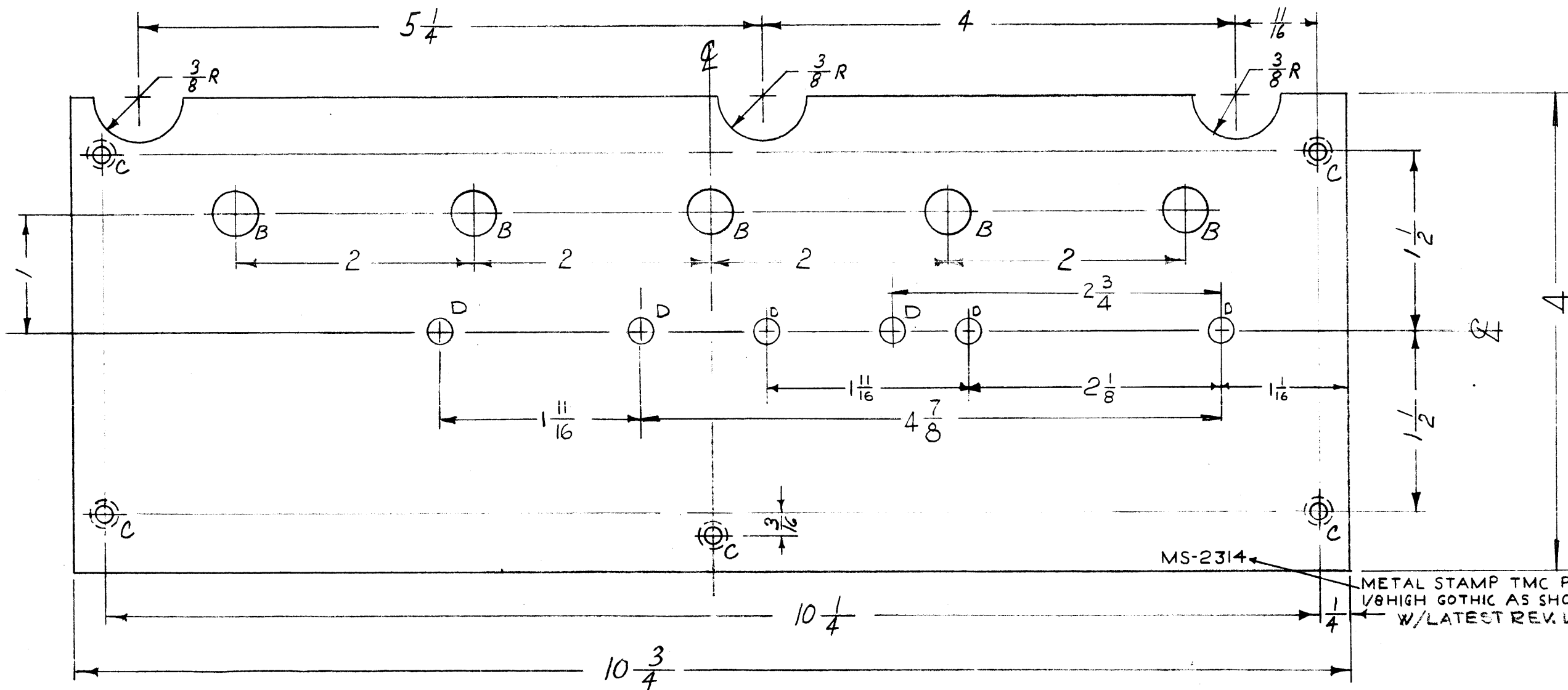


MS-2314 D

HOLES

- B- 3/8 DIA
- C- DR. & C'SINK FOR 8-32 F.H.S
- D- 7/32 DIA.

REQ.
5
5
6



NOTICE TO PERSONS RECEIVING THIS DRAWING
 THE TECHNICAL MATERIEL CORPORATION claims proprietary right in the material disclosed hereon. This drawing is issued in confidence for engineering information only and may not be reproduced or used to manufacture anything shown hereon without permission from THE TECHNICAL MATERIEL CORPORATION to the user. This drawing is loaned for mutual assistance and is subject to recall at any time.

Property of:
 THE TECHNICAL MATERIEL CORPORATION
 MAMARONECK, NEW YORK

MS-2314
 METAL STAMP TMC PT. NO. 1/8 HIGH GOTHIC AS SHOWN W/LATEST REV. LETTER

ISSUE	ITEM	CHANGED FROM	DATE	CH. NO.	DRAFTS	CHECKER	ENG. APP.
D	1	3"D HOLES ADDED	4-14-66	16097	G.D.L.	gdl	[Signature]
C	1	3"D HOLES RELOCATED	9-13-61	5555	ER	er	[Signature]
B	4	ITEM (NT-129-524-6) DELETED	6-29-61	5159	G.D.L.	Ru	[Signature]
	3	2"D HOLES ADDED					
	2	1"D HOLE RELOCATED					
A	1	1"A HOLE .413D. DELETED	7-22-60	2631	CS	[Signature]	[Signature]
	1	A" HOLE RELOCATED					

REQ. PER UNIT	MODEL	PROJECT NO.	ASS'Y. NO.	DATE
1	MSR-8			6-29-61
1	MSR-6			6-29-61
1	MSR-5			6-29-61
1	MSR-4			6-27-60
1	MSR-3A			6-27-60
1	MSR-3			6-27-60

REQ. ITEM	PART NO.	DESCRIPTION	SYMBOL
	.081	THE TECHNICAL MATERIEL CORP. MAMARONECK, NEW YORK	
	STOCK SIZE		
	ALUMINUM	COVER, POWER SUPPLY	
	MATERIAL		
	5052-H32		
	TYPE & TEMPER	HEAT TREAT. SPEC.	
	3404 YELL. IRIDITE		
	FINISH & SPEC. NO.	ELEC. DES. APP.	MECH. DES. APP.
		[Signature]	[Signature]
		MS-2314	D