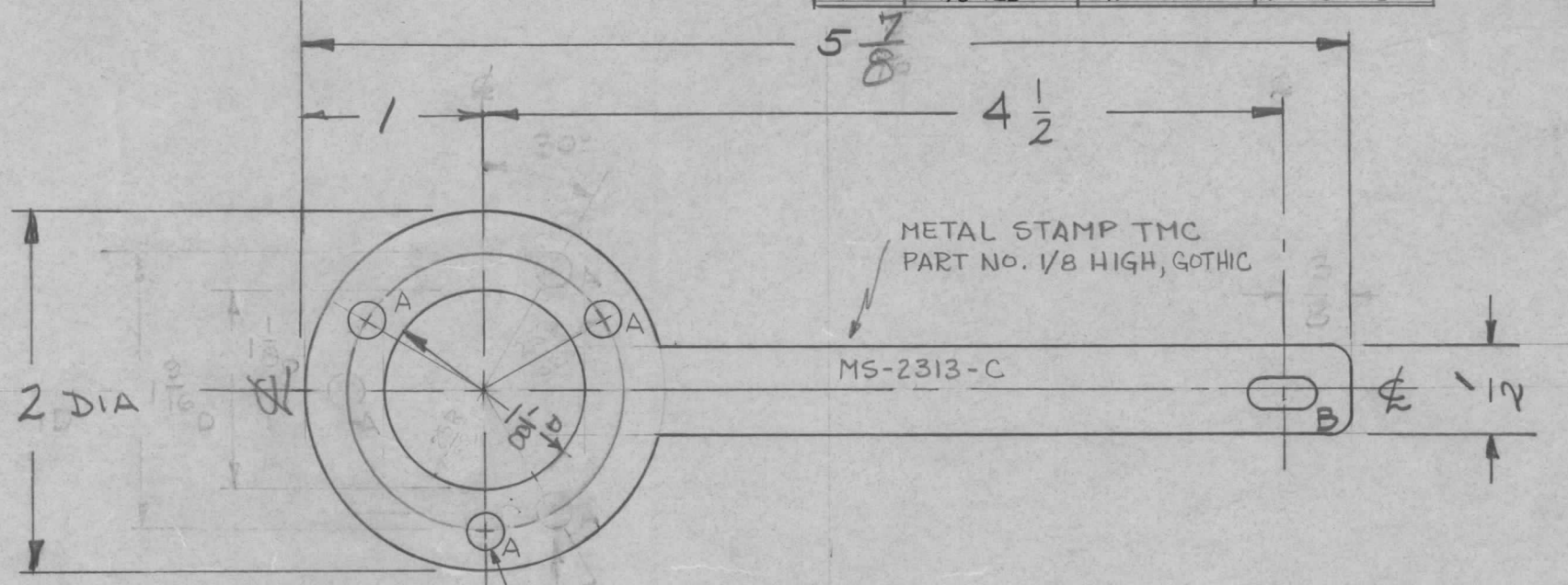


REQ. PER UNIT	USED ON			MS-2313	D
	MODEL	ASS'Y. NO.	DATE		
1	GPT-40K	AX-209	6-22-60		
1	GPT-40K () 3 AS-120	AX-353	12-23-63		
1	GPT-40K () 4 AS-125	AX-458	12-23-63		



A- 3/16 (.187) DIA - 3 REQ.
 B- 3/16 X 3/8 SLOT 1 REQ.

3 HOLES 3/16 DIA,
 120° APART ON
 25/32 RADIUS.

UNLESS OTHERWISE SPECIFIED DIMENSIONS ARE IN INCHES AND INCLUDE CHEMICALLY APPLIED OR PLATED FINISHES		
DECIMALS	TOLERANCES	FRACTIONS
.X ± .05		± 1/64
.XX ± .01		ANGLES
.XXX ± .005		± 0° 30'

CUT HERE
 GUARANTEED
 2-66

ISSUE	ITEM	CHANGED FROM	DATE	CH. NO.	DRAFTS	CHECKER	ENG. APP.	REQ. ITEM	PART NO.	DESCRIPTION	SYMBOL		
D	1	DWG UPDATED	12/23/63	10642	File	File	File						
C	1	25/32 R. DELETED	1-11-63	8014	File	File	File	.040		THE TECHNICAL MATERIEL CORP. MAMARONECK, NEW YORK			
B	1	3(A) HOLES RELOCATED 30°	4-25-62	6639	LG	File	File	STOCK SIZE					
A	1	FINISH WAS GOLD PLATE .000025	11/21/61	5953	DM	aa	aa	COPPER		STRAP, ROTOR SHORTING			
TOLERANCES								MATERIAL					
SCALE:								1/2 H		TORILLO			
DEC. DIM. ± FRAC. DIM. ± ANGULAR DIM. ±								TYPE & TEMPER SILVER PLATE S-245		DRAWN CHECKED		FINAL APPROVAL MS-2313 D	
MAXIMUM ALLOWABLE TOLERANCES HAVE BEEN DETERMINED AND ANY DEVIATIONS WILL BE CAUSE FOR REJECTION. REMOVE ALL BURRS AND SHARP EDGES								FINISH & SPEC. NO.		ELEC. DES. APP		MECH. DES. APP	