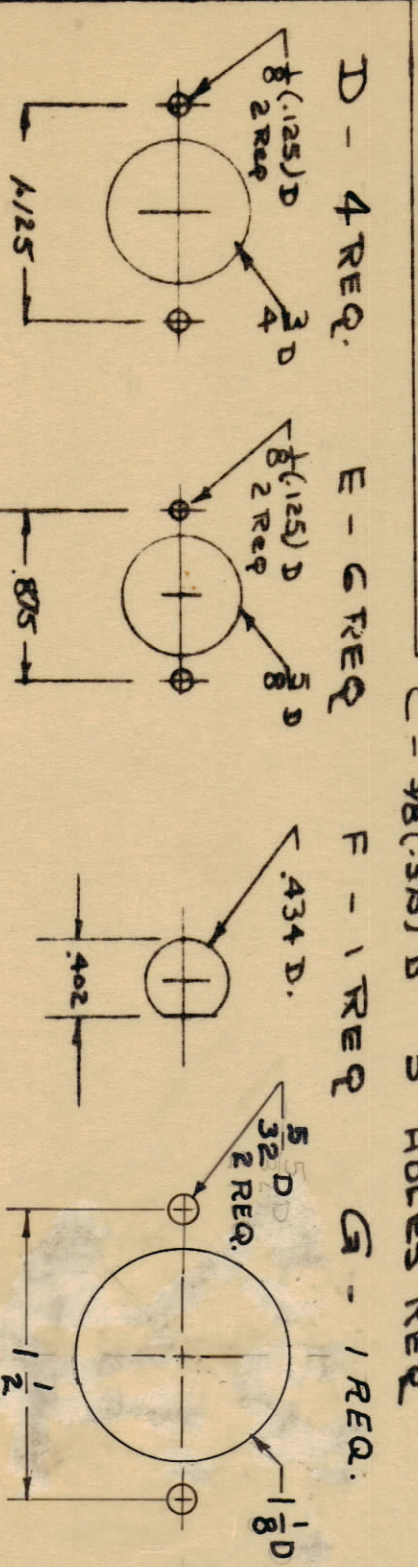
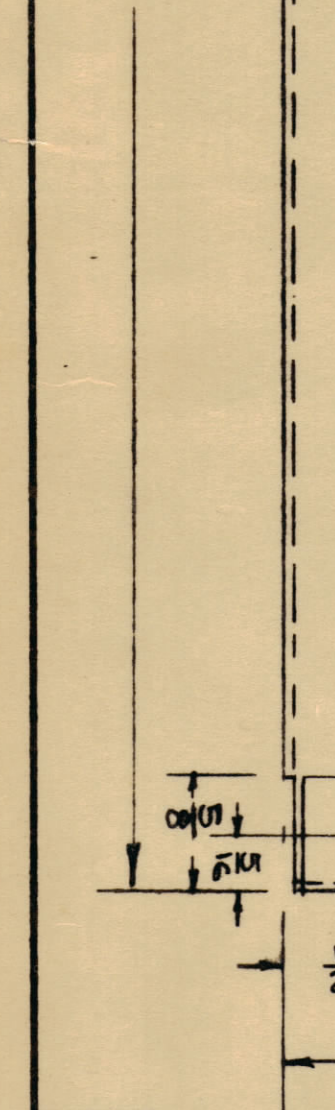
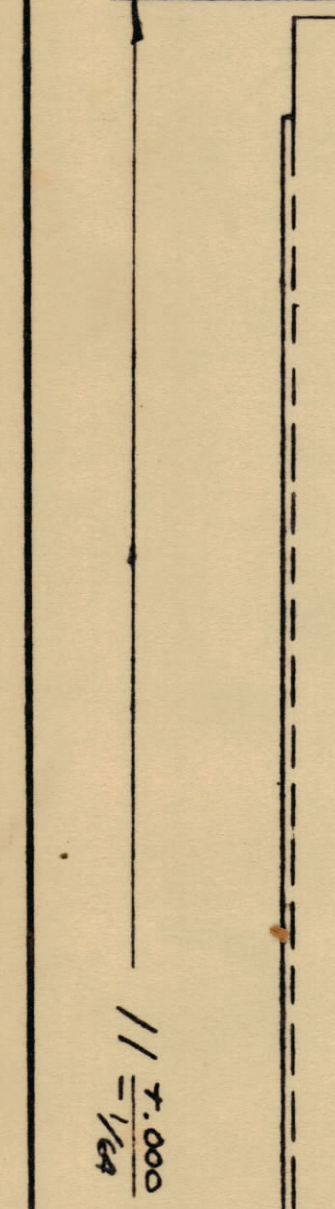
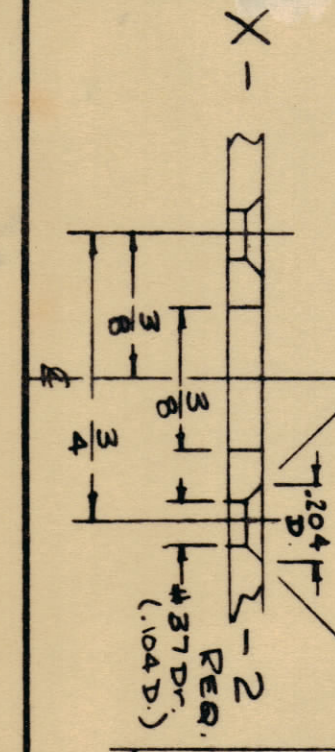


IT IS FOUND NECESSARY TO CHANGE ANY TOLERANCES OR OTHER DETAILS SPECIFIED ON THIS DRAWING NOTIFY THE PURCHASER IMMEDIATELY BY RETURNING THE DRAWING TO THE MANUFACTURER WITH A RECOMMENDATION FOR CHANGE. REMOVE ALL RUBBING AND SHARP EDGES.



- A - 4 REQ. 3/4 HOLES REQ.
- B - 12 HOLES REQ.
- C - 3 HOLES REQ.
- D - 3 HOLES REQ.
- E - 2 REQ.
- F - 1 REQ.
- G - 1 REQ.
- N - 1/16 (437) D
- P - 3/16 (532) D
- R - 1/4 (250) D
- S - 3/4 (140) D
- T - 1 REQ.
- U - 15/32 (448) D
- V - 1/8 (125) D
- Y - 5/16 DIA

ALL DIMENSIONS UNLESS OTHERWISE SPECIFIED ARE IN INCHES AND DECIMALS THEREOF.	DATE	3/1/61
UNLESS OTHERWISE SPECIFIED, ALL DIMENSIONS ARE TO BE MAINTAINED AS SHOWN ON THIS DRAWING.	DESIGNED BY	R. J. [Signature]
	CHECKED BY	[Signature]
	DATE	3/1/61
	PROJECT NO.	MS-2308
	ISSUED ON	3/1/61
	BY	[Signature]
	DATE	3/1/61



1	MSR-5	PROJECT NO.	MS-2308	ISSUED ON	3/1/61	BY	[Signature]	DATE	3/1/61
REF: LD-755(8) (CHASSIS LETTERING)									
NO. ITEM	PART NO.	DESCRIPTION	SYMBOL						
1	OG4	THE TECHNICAL MATERIAL CORP.							
2	ALUMINUM	MATERIAL							
3	SO S2-H32	FINISH							
4	MSR-5	MAIN CHASSIS							
5	MS-2308	PRINTING							

MS-2308

