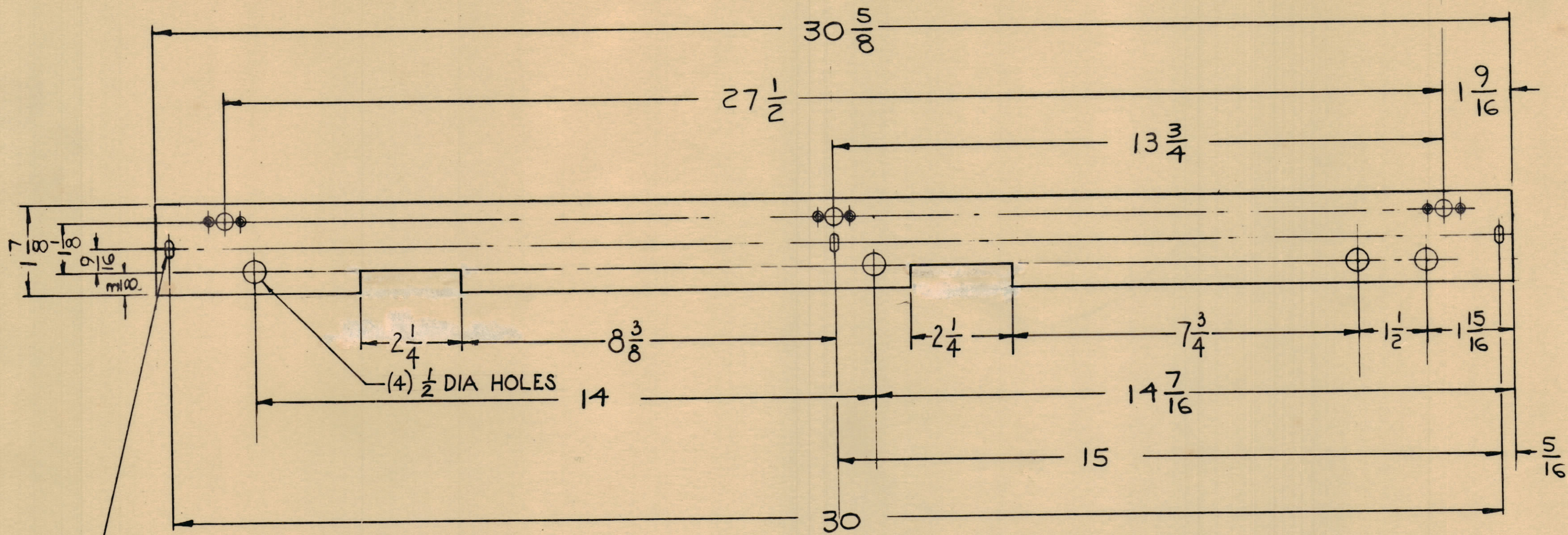
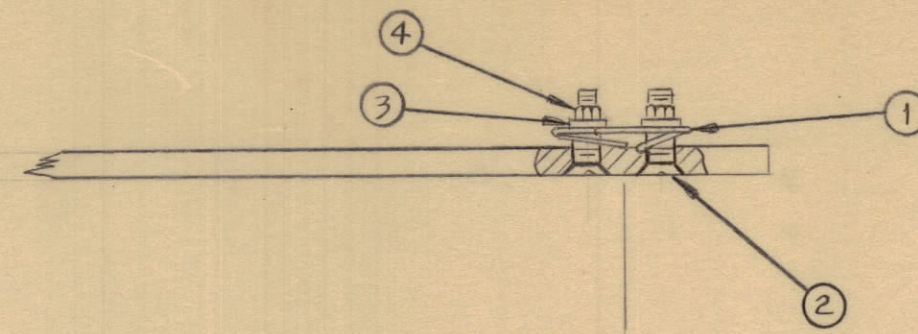


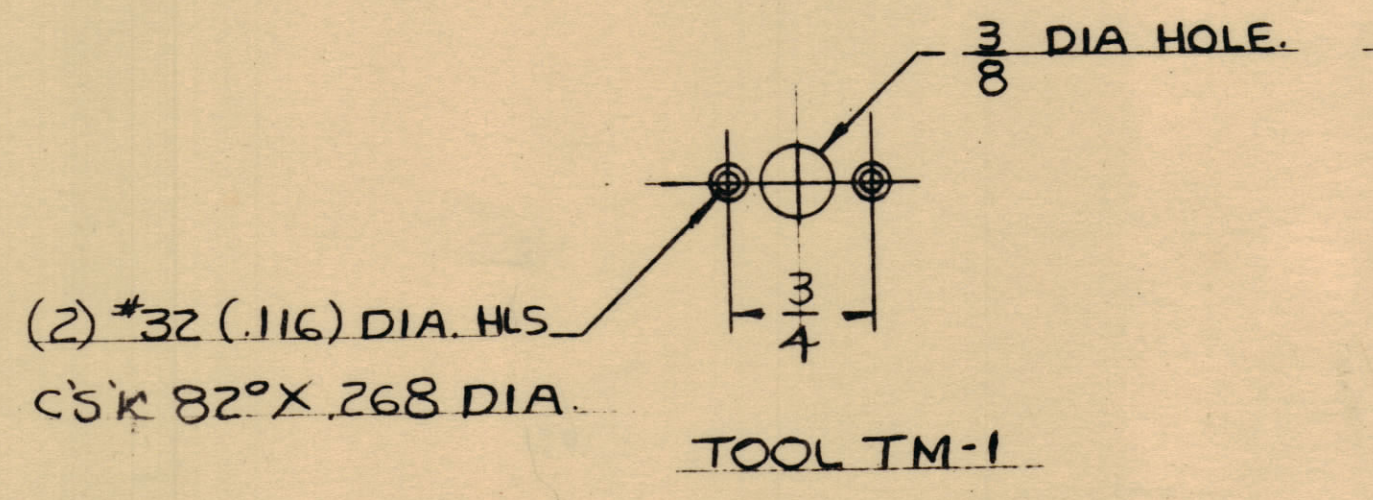
IF IT IS FOUND DESIRABLE TO CHANGE ANY TOLERANCE OR OTHER DETAIL SPECIFIED ON THIS DRAWING NOTIFY THE PURCHASER PROMPTLY.

MAXIMUM ALLOWABLE TOLERANCES HAVE BEEN DETERMINED AND DEVIATIONS WILL BE CAUSE FOR REJECTION. REMOVE ALL BURRS AND SHARP EDGES.



(3) .156 X .312 OVAL SLOTS

MS-2302 B



B	2	(2) 3/8 X 2 1/4 CUTOUTS ADDED	3/7/66	15917	WHD	QTS	QA
A	1	ITEMS 1, 2, 3, 4 ADDED	10/15/60	3197	REL	WHD	WHD
ISSUE	ITEM	CHANGED FROM	DATE	CH. NO.	DRAFTS	CHECKER	ENG. APP.
TOLERANCES		SCALE:					
ALL	DEC. DIM. ±	DRILL, PUNCH, COMMERCIAL STOCK					
OTHERS	FRAC. DIM. ±	SIZES AND MANUFACTURERS					
	ANGULAR DIM. ±	TOLERANCES ARE NOT INCLUDED.					

6	4	NTH0348BNG	NUT	
6	3	LWS03MRN	LOCKWASHER	
6	2	SCFS0348BN8	SCREW	
3	1	FS-102-1	SPRING TYPE S-CLIP	
REQ. ITEM	PART NO.		DESCRIPTION	SYMBOL
.125			THE TECHNICAL MATERIEL CORP.	
ALUMINUM			MAMARONECK, NEW YORK	
5052-H32			RIGHT SIDE STRIP	
TYPE & TEMPER			REAR SHIELD	
HEAT TREAT. SPEC.			WSP	WHD
FINISH & SPEC. NO.			5404	MS-2302 B

1	BPT-40K	AP-102	6-14-60
REQ. PER UNIT	MODEL	PROJECT NO.	DATE
	ASSY. NO.		
	USED ON		