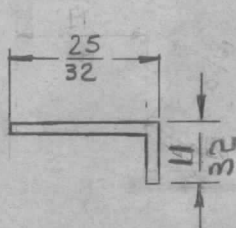
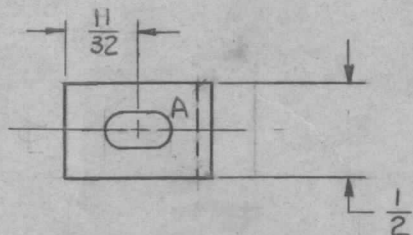


REQ. PER UNIT	USED ON			MS-2201	G
	MODEL	ASS'Y. NO.	DATE		
6	AX-209	40K	4-22-60		

A \leftarrow 11/64 X 11/32 SLOT 1 REQ.



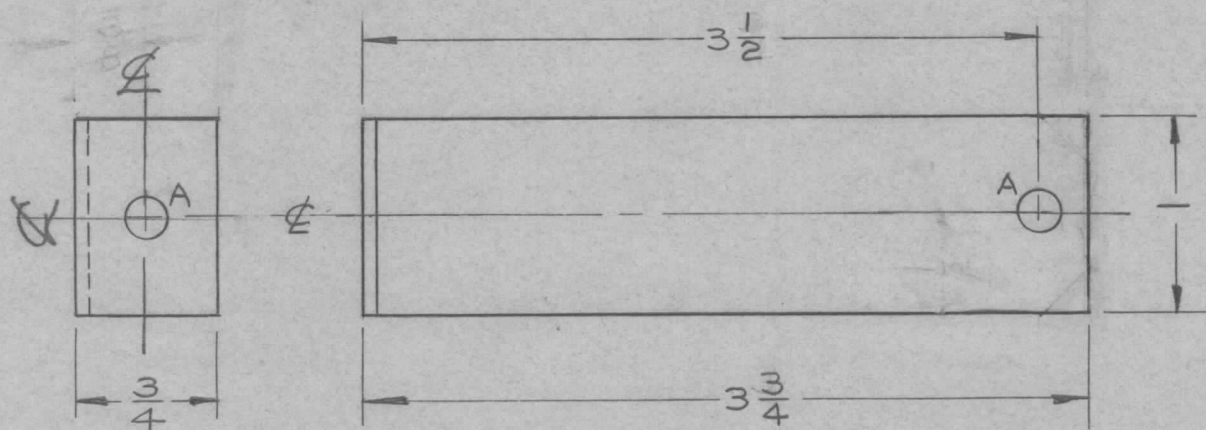
NOTE: THIS PART IS NO LONGER USED

NOTE: NO LONGER USED

REV.	DESCRIPTION	DATE	CH. NO.	DRAFTS	CHECKER	ENG. APP.	REQ.	ITEM	PART NO.	DESCRIPTION	SYMBOL			
E	FINISH ADDED	7/15/64	11210							THE TECHNICAL MATERIEL CORP. MAMARONECK, NEW YORK CLIP, TUBE	G			
D	11/32 DIM. WAS 3/8	7/15/64	11210											
C	25/32 DIM. WAS 5/8	7/15/64	11210											
G	ON FRONT VIEW DIM 11/32 WAS 5/16	7-29-64	11991		Jde	QB								
F	MAT. WAS COPPER. NOTE: BURR NOTE DEL.	4/15/64	11210	A.M.	Jde	QB								
ISSUE	ITEM	CHANGED FROM	DATE	CH. NO.	DRAFTS	CHECKER	ENG. APP.							
TOLERANCES			SCALE:				DRAWN		CHECKED		FINAL APPROVAL			
DEC. DIM. \pm			MAXIMUM ALLOWABLE TOLERANCES HAVE BEEN DETERMINED AND ANY DEVIATIONS WILL BE CAUSE FOR REJECTION. REMOVE ALL BURRS AND SHARP EDGES				TYPE & TEMPER		HEAT TREAT. SPEC.		ELEC. DES. APP			
FRAC. DIM. \pm 1/64							5245 SILVER PLATE		5423 CLEAR IRIDITE		MECH. DES. APP		MS-2201	
ANGULAR DIM. \pm							FINISH & SPEC. NO.						G	

REQ. PER UNIT	USED ON			MS-2202
	MODEL	ASS'Y. NO.	DATE	
1	GPT-40K	AX-209	4-22-60	

A ✓ 13/64 D. 2 REQ.

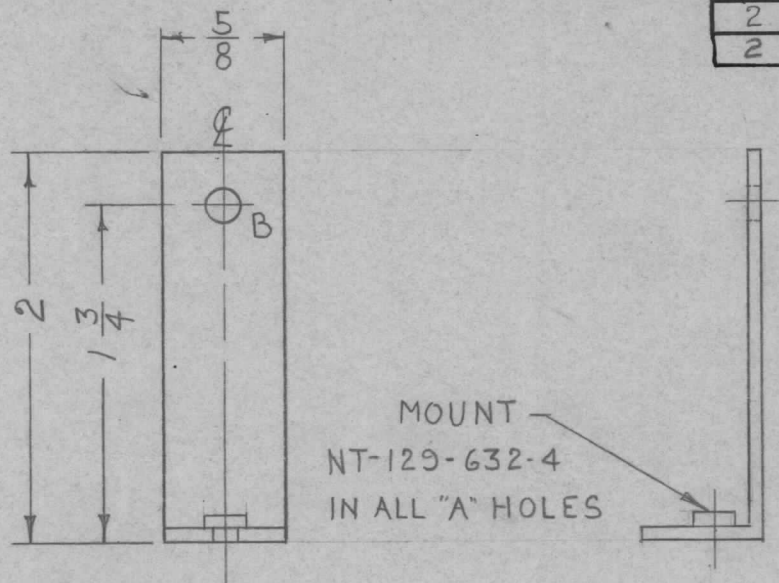


FRONT VIEW SHOWN

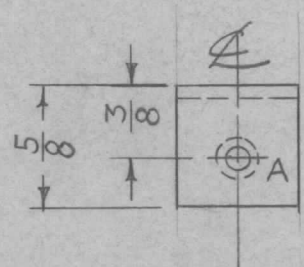
REF - TMC DWG NO. LD-784 (1)

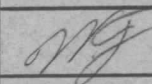
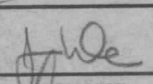
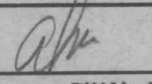
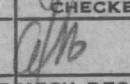
REQ.	ITEM	PART NO.	DESCRIPTION		SYMBOL					
		.081 GA	THE TECHNICAL MATERIEL CORP.							
		STOCK SIZE	MAMARONECK, NEW YORK							
		ALUMINUM	SUPPORT, COIL & CAPACITOR							
		MATERIAL	BOTTOM P.A. DECK							
ISSUE	ITEM	CHANGED FROM	DATE	CH. NO.	DRAFTS	CHECKER	ENG. APP.			
TOLERANCES			SCALE: FULL							
DEC. DIM. ±			MAXIMUM ALLOWABLE TOLERANCES HAVE BEEN DETERMINED AND ANY DEVIATIONS WILL BE CAUSE FOR REJECTION. REMOVE ALL BURRS AND SHARP EDGES							
FRAC. DIM. ± 1/64										
ANGULAR DIM. ±										
TYPE & TEMPER		HEAT TREAT. SPEC.		DRAWN	CHECKED	FINAL APPROVAL				
IRIDITE S404						MS-2202				
FINISH & SPEC. NO.		ELEC. DES. APP.		MECH. DES. APP.						

REQ. PER UNIT	USED ON			MS-2203
	MODEL	ASS'Y. NO.	DATE	
	2	CSS-1	4-25-60	
2	CSS-1A	1-30-62		



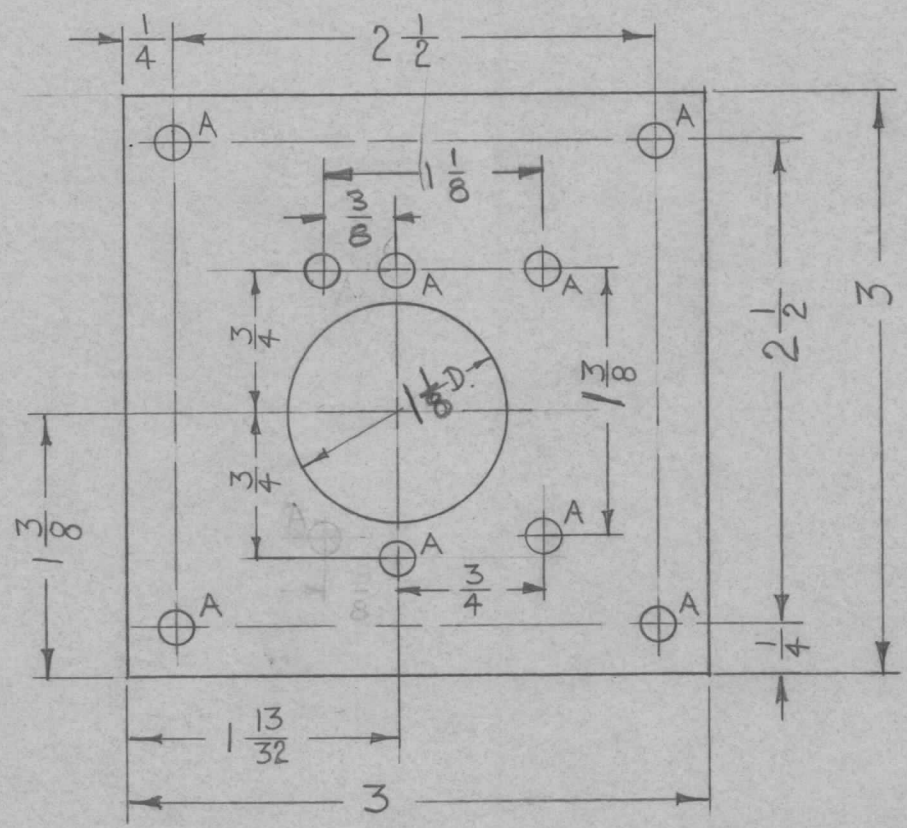
A - .191-.194 D. (FOR NT-129-632-4) 1 REQ
 B - 11/64 (.171) D. 1 "



							1	1	NT-129-632-4	NUT, ROUND, SWAGE TYPE		
							REQ. ITEM	PART NO.		DESCRIPTION		SYMBOL
									.064	THE TECHNICAL MATERIEL CORP.		
									STOCK SIZE	MAMARONECK, NEW YORK		
									ALUMINUM	BRACKET, SELENIUM RECTIFIER		
									MATERIAL			
ISSUE	ITEM	CHANGED FROM	DATE	CH. NO.	DRAFTS	CHECKER	ENG. APP.	5052-H32	  			
TOLERANCES			SCALE:				TYPE & TEMPER		HEAT TREAT. SPEC.	DRAWN	CHECKED	FINAL APPROVAL
DEC. DIM. ±			MAXIMUM ALLOWABLE TOLERANCES HAVE BEEN DETERMINED AND ANY DEVIATIONS WILL BE CAUSE FOR REJECTION. REMOVE ALL BURRS AND SHARP EDGES				S404 YELL. IRIDITE					MS-2203
FRAC. DIM. ± 1/64							FINISH & SPEC. NO.		ELEC. DES. APP.	MECH. DES. APP.		
ANGULAR DIM. ±												

REQ. PER UNIT	USED ON			MS-2204	A
	MODEL	ASS'Y. NO.	DATE		
1	CSS-1		4-25-60		

A-1/64 (.171) D. 9 REQ.



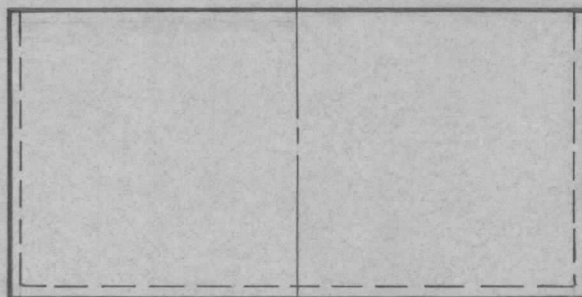
REF: LD-731

UNLESS OTHERWISE SPECIFIED DIMENSIONS ARE IN INCHES AND INCLUDE CHEMICALLY APPLIED OR PLATED FINISHES		
DECIMALS	TOLERANCES	FRACTIONS
.X ± .05		± 1/64
.XX ± .01		ANGLES
.XXX ± .005		± 0° 30'

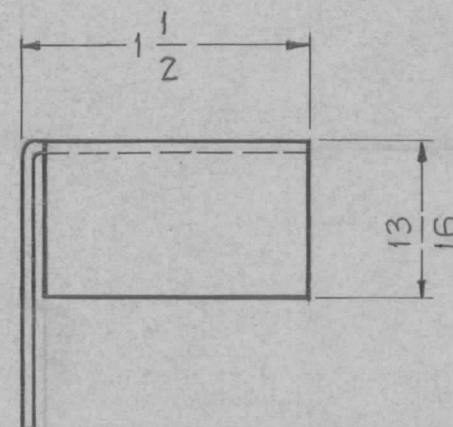
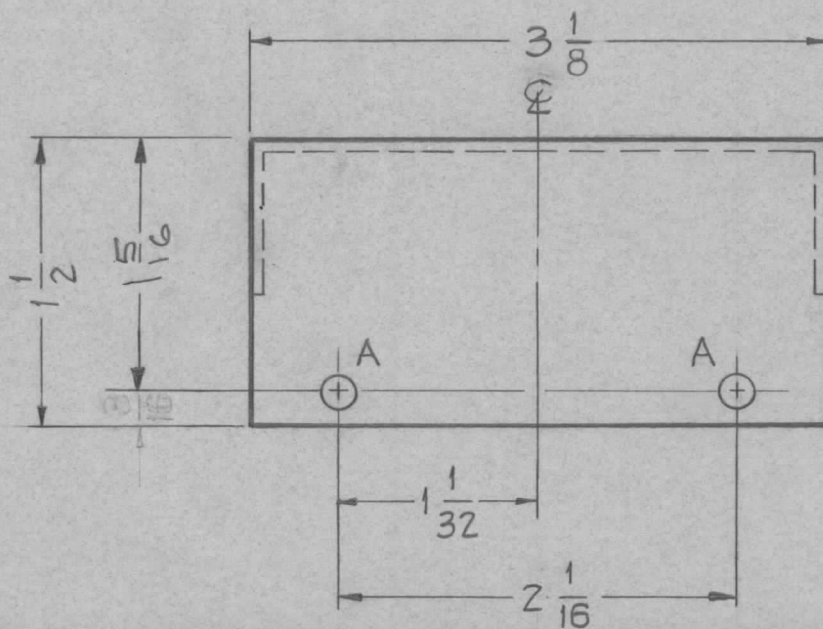
CUT HERE
GUARANTEED
2-66

ISSUE	ITEM	CHANGED FROM	DATE	CH. NO.	DRAFTS	CHECKER	ENG. APP.	REQ.	ITEM	PART NO.	DESCRIPTION	SYMBOL	
									.064		THE TECHNICAL MATERIEL CORP.		
									STOCK SIZE		MAMARONECK, NEW YORK		
									ALUMINUM		MOUNTING PLATE		
									MATERIAL		IMC STANDARD		
									5052-H32		<i>[Signature]</i>		
									TYPE & TEMPER	HEAT TREAT. SPEC.	DRAWN	CHECKED	FINAL APPROVAL
									3404 YELL IRIDITE		<i>[Signature]</i>		
									FINISH & SPEC. NO.	ELEC. DES. APP	MECH. DES. APP	MS-2204	A

REQ. PER UNIT	USED ON			MS-2216
	MODEL	ASS'Y. NO.	DATE	
1	CLL-1		5-23-60	

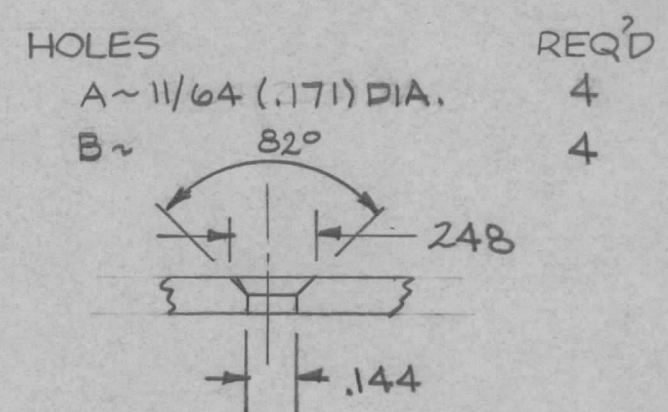
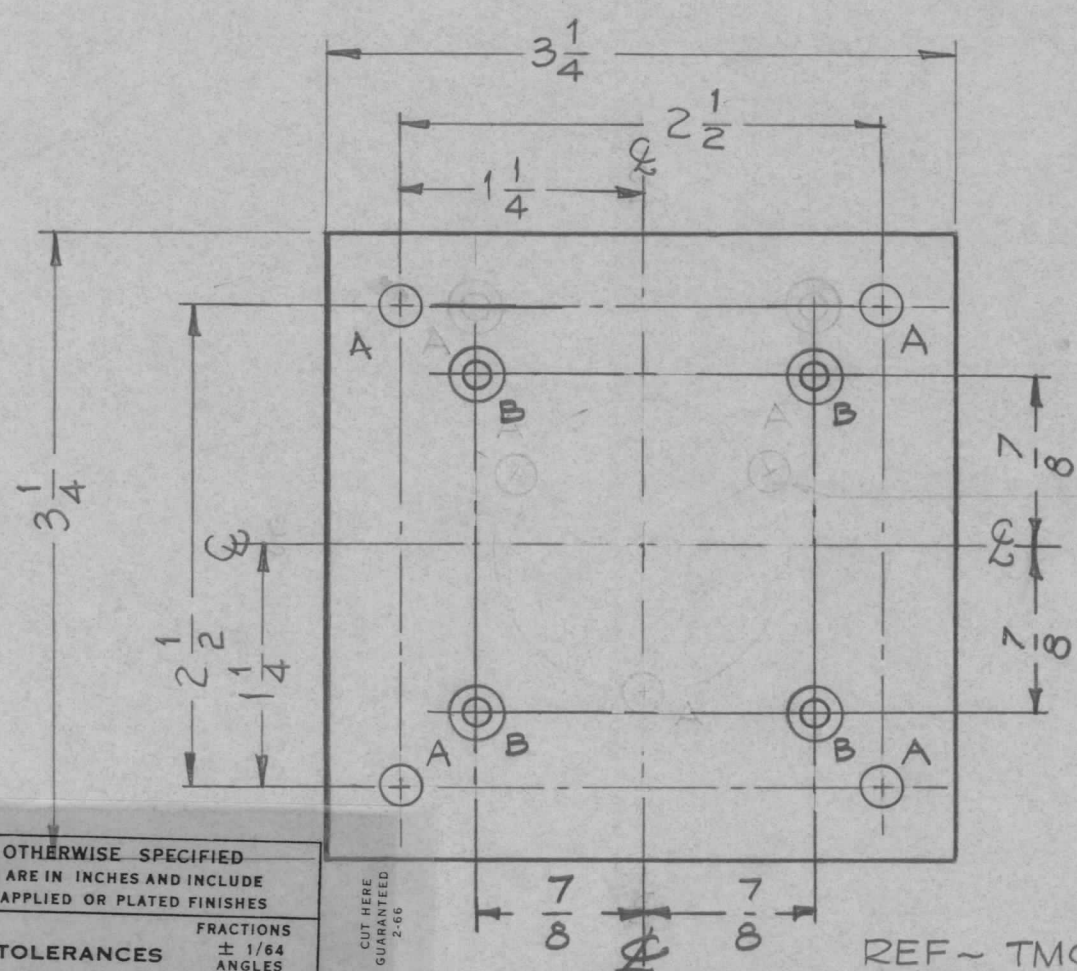


A- 1/64 DIA 2 HOLES



ISSUE	ITEM	CHANGED FROM	DATE	CH. NO.	DRAFTS	CHECKER	ENG. APP.	REQ. ITEM	PART NO.	DESCRIPTION	SYMBOL
								.051		THE TECHNICAL MATERIEL CORP.	
								STOCK SIZE		MAMARONECK, NEW YORK	
								ALUMINUM		COVER, BOARD	
								MATERIAL		TERMINAL, ELEMENT	
								5052-H32	J.C. Biela	<i>Jwe</i>	<i>[Signature]</i>
								TYPE & TEMPER		DRAWN	CHECKED
								HEAT TREAT. SPEC.			FINAL APPROVAL
								5404-IRIDITE	<i>S.D.</i>	<i>[Signature]</i>	MS-2216
								FINISH & SPEC. NO.		ELEC. DES. APP	MECH. DES. APP

REQ. PER UNIT	USED ON			MS-2224	A
	MODEL	ASS'Y. NO.	DATE		
1	GPT-40K	AX-209	4-26-60		



UNLESS OTHERWISE SPECIFIED
DIMENSIONS ARE IN INCHES AND INCLUDE
CHEMICALLY APPLIED OR PLATED FINISHES

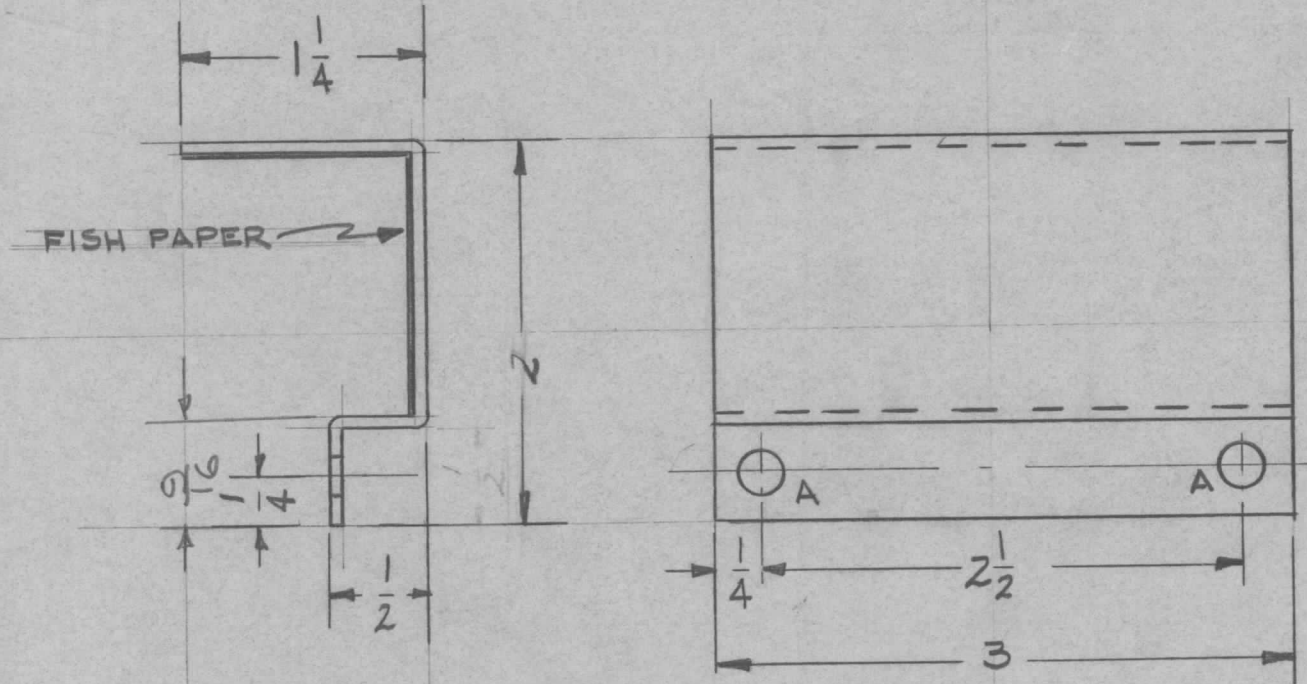
DECIMALS	FRACTIONS
.X ± .05	± 1/64
.XX ± .01	ANGLES
.XXX ± .005	± 0° 30'

TOLERANCES

REF ~ TMC DWG. NO. LD-785 (1)

REQ.	ITEM	PART NO.	DESCRIPTION			SYMBOL	
		1/8	THE TECHNICAL MATERIEL CORP.				
		STOCK SIZE	MAMARONECK, NEW YORK				
A	1	ALUMINUM	PLATE CAPACITOR MOUNTING				
		MATERIAL	(PA DECK)				
ISSUE	ITEM	CHANGED FROM	DATE	CH. NO.	DRAFTS	CHECKER	ENG. APP.
			7-18 60	2589		File	JB
TOLERANCES			SCALE:				
DEC. DIM. ±			MAXIMUM ALLOWABLE TOLERANCES HAVE BEEN DETERMINED AND ANY DEVIATIONS WILL BE CAUSE FOR REJECTION: REMOVE ALL BURRS AND SHARP EDGES				
FRAC. DIM. ±							
ANGULAR DIM. ±							
TYPE & TEMPER		HEAT TREAT. SPEC.	DRAWN	CHECKED	FINAL APPROVAL		
S-404-IRIDITE					MS-2224 A		
FINISH & SPEC. NO.		ELEC. DES. APP	MECH. DES. APP				

REQ. PER UNIT	USED ON			MS-2232
	MODEL	ASS'Y. NO.	DATE	
2	GPT-40K	AR-116	4-29-60	



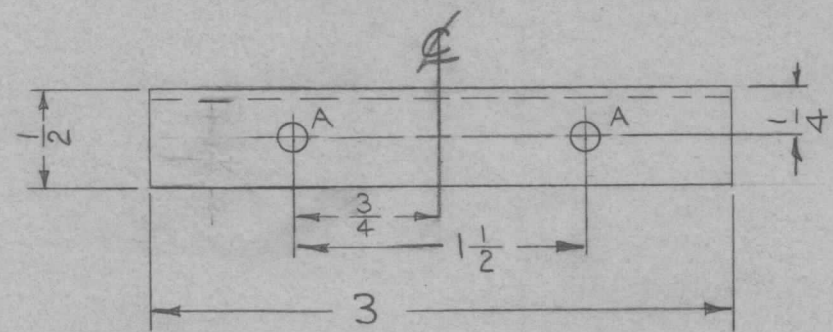
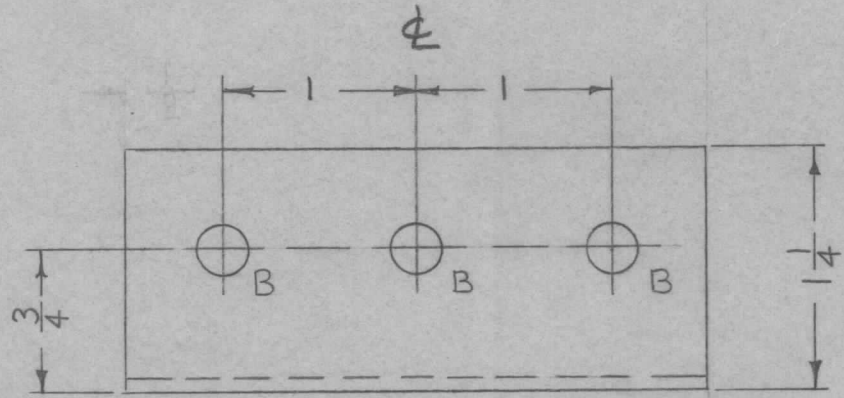
A - 15/64 (.234) D. 2 REQ.

ISSUE	ITEM	CHANGED FROM	DATE	CH. NO.	DRAFTS	CHECKER	ENG. APP.	REQ.	ITEM	PART NO.	DESCRIPTION	SYMBOL				
										051	THE TECHNICAL MATERIEL CORP. MAMARONECK, NEW YORK COVER, INSULATOR RELAY, FRAME -					
										STOCK SIZE						
										ALUMINUM						
										MATERIAL						
								5052-H32	H-32							
TOLERANCES			SCALE: FULL					TYPE & TEMPER		HEAT TREAT. SPEC.		DRAWN	CHECKED	FINAL APPROVAL		
DEC. DIM. ±			MAXIMUM ALLOWABLE TOLERANCES HAVE BEEN DETERMINED AND ANY DEVIATIONS WILL BE CAUSE FOR REJECTION. REMOVE ALL BURRS AND SHARP EDGES					5-404-YEL./RIDITE						MS-2232		
FRAC. DIM. ±								1/64		FINISH & SPEC. NO.		ELEC. DES. APP			MECH. DES. APP	
ANGULAR DIM. ±																

REF. DWGS.
LD-734, LD-735

REQ. PER UNIT	USED ON			MS-2233	A
	MODEL	ASS'Y. NO.	DATE		
2	GPR-90RXD.		4-29-60		

A-9/64 (.140) D. 2 REQ.
B-1/4 (.250) D. 3 REQ.



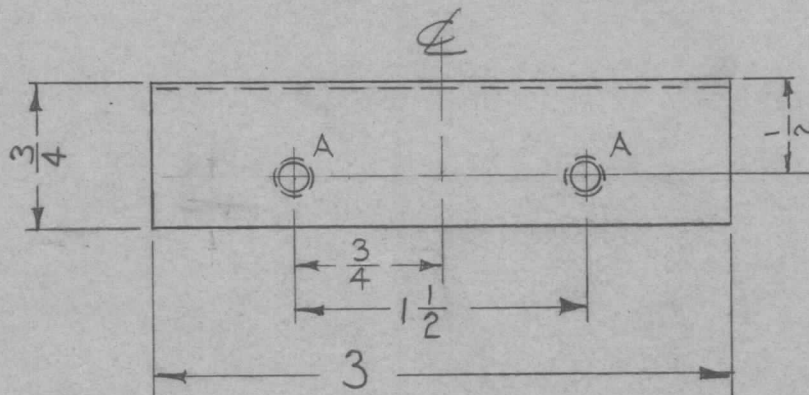
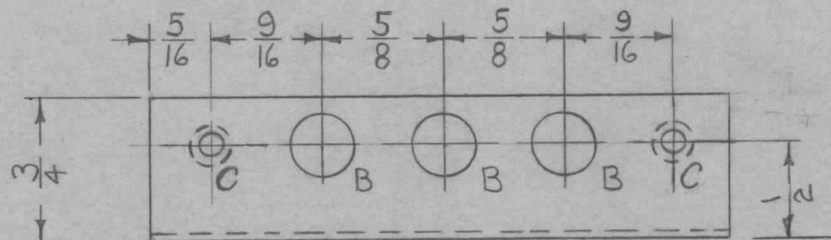
FOR GPR-92
REF. LD-1097, LD-1098

FOR GPR-90RXD
REF. LD-734, LD-735

							REQ.	ITEM	PART NO.	GELLMAN	DESCRIPTION	SYMBOL						
							.064			THE TECHNICAL MATERIEL CORP.								
							STOCK SIZE			MAMARONECK, NEW YORK								
							ALUMINUM			BRACKET								
							MATERIAL			R.F. COIL MOUNTING								
ISSUE	ITEM	CHANGED FROM	DATE	CH. NO.	DRAFTS	CHECKER	ENG. APP.	5052-H32										
A	2	DELETED LD-1097, LD-1098 REF	11-12-63	10365		<i>MIT</i>	<i>[Signature]</i>											
	1	ON USED ON CHART DELETED GPR-92 REF																
TOLERANCES			SCALE:				TYPE & TEMPER		HEAT TREAT. SPEC.		DRAWN		CHECKED		FINAL APPROVAL			
DEC. DIM. ±			MAXIMUM ALLOWABLE TOLERANCES HAVE BEEN DETERMINED AND ANY DEVIATIONS WILL BE CAUSE FOR REJECTION. REMOVE ALL BURRS AND SHARP EDGES				S404 YELL. IRIDITE				<i>[Signature]</i>		<i>[Signature]</i>		MS-2233			
FRAC. DIM. ± 1/64							FINISH & SPEC. NO.		ELEC. DES. APP		MECH. DES. APP						A	
ANGULAR DIM. ±																		

REQ. PER UNIT	USED ON			MS-2234	B
	MODEL	ASS'Y. NO.	DATE		
2	GPR-90RXD.		5-2-60		

HOLE	DESCRIPTION	REQ
A	.144 DIA C'SK 82 TO .284 D.	2
B	5/16 (.312) D.	3
C	.120 DIA. C'SK 82° TO .230 D.	2



ISSUE	ITEM	CHANGED FROM	DATE	CH. NO.	DRAFTS	CHECKER	ENG. APP.	REQ. ITEM	PART NO.	DESCRIPTION	SYMBOL	
								.064		THE TECHNICAL MATERIEL CORP.		
								STOCK SIZE		MAMARONECK, NEW YORK		
B	1	ADD 2" C'SK 82° DELETED "A"	11/5/65	15094	JLV	JCB		ALUMINUM		BRACKET		
A	1	"A"-HOLES WERE 9/64 DIA.	9.2.64	12265	WLB	JCB		MATERIAL		TRIMMER CONDENSER		
TOLERANCES			SCALE:					5052-H32				
DEC. DIM. ±			MAXIMUM ALLOWABLE TOLERANCES HAVE BEEN DETERMINED AND ANY DEVIATIONS WILL BE CAUSE FOR REJECTION. REMOVE ALL BURRS AND SHARP EDGES					TYPE & TEMPER	HEAT TREAT. SPEC.	DRAWN	CHECKED	FINAL APPROVAL
FRAC. DIM. ± 1/64								3404 YELL. IRIDITE				
ANGULAR DIM. ±								FINISH & SPEC. NO.	ELEC. DES. APP	MECH. DES. APP	MS-2234	B

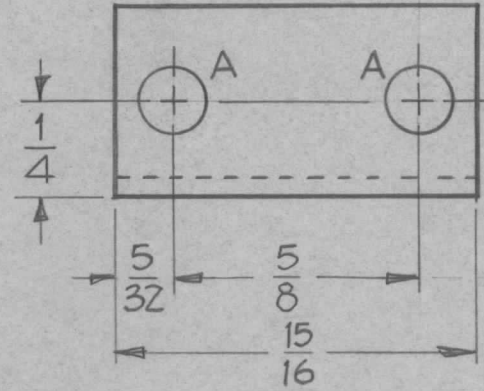
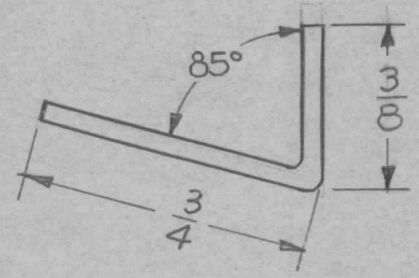
REQ. PER UNIT	USED ON			MS-2252	D
	MODEL	ASS'Y. NO.	DATE		
3	GPT-40K	AX-209	5-6-60		

HOLES REQ
A ~ 11/64 (.171) DIA. 2

UNLESS OTHERWISE SPECIFIED
DIMENSIONS ARE IN INCHES AND INCLUDE
CHEMICALLY APPLIED OR PLATED FINISHES

DECIMALS	TOLERANCES	FRACTIONS
.X ± .05		± 1/64
.XX ± .01		ANGLES
.XXX ± .005		± 0° 30'

CUT HERE
GUARANTEED
2-66



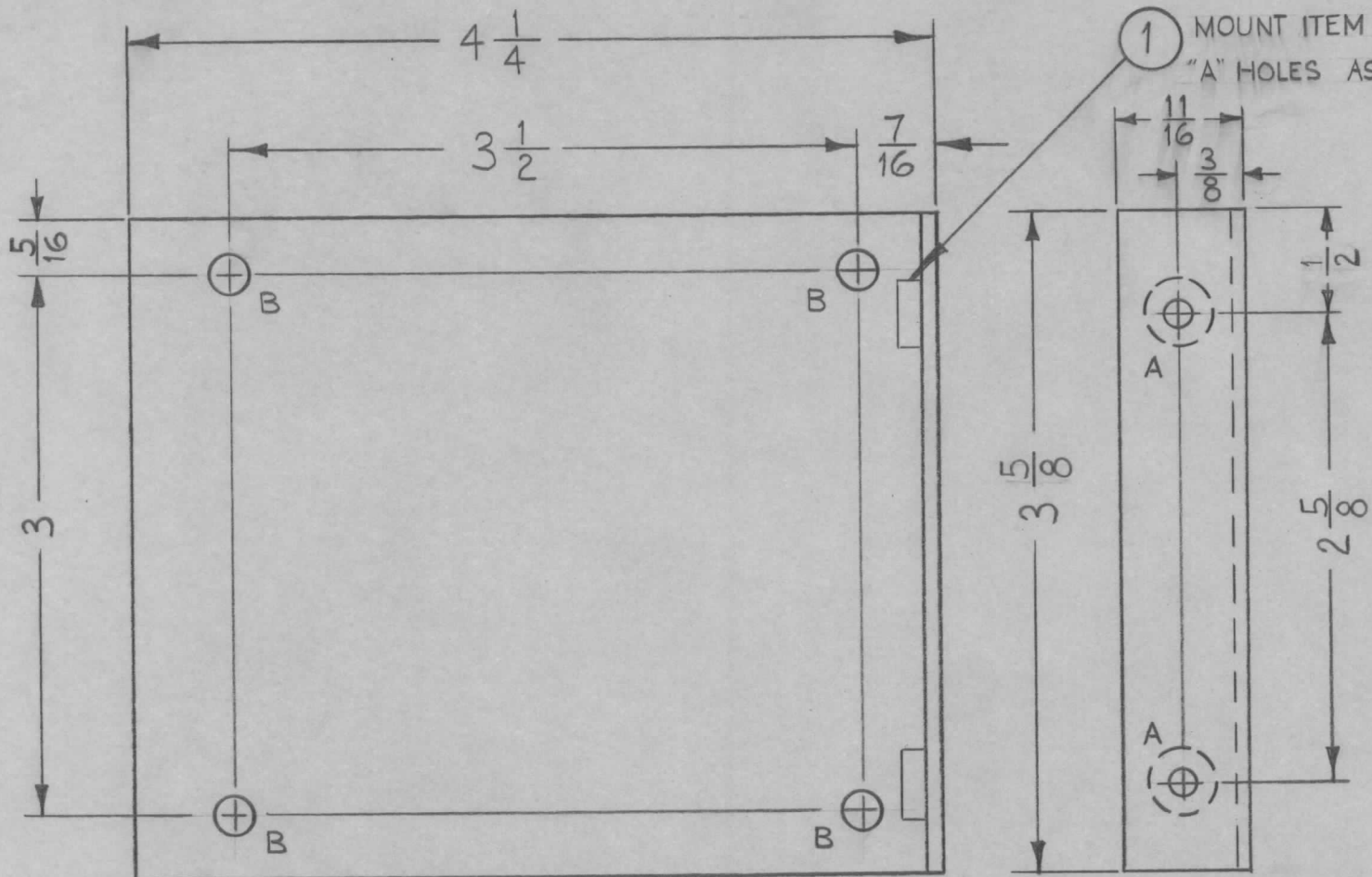
* HEAT TREATMENT
2 HR'S @ 600°F
‡ AIR COOL

Refs MS-1978

D	I	HEAT TREAT. NOTE ADD	5.8.64	11384	WJB	@	Q10	REQ. ITEM	PART NO.	DESCRIPTION	SYMBOL				
C	1	3/8 WAS 1/2	3-1964	11063	A.M.	@	Q20	.040		THE TECHNICAL MATERIEL CORP. MAMARONECK, NEW YORK SPRING, CONTACT, GROUND					
B	1	FINISH WAS NATURAL	7-12-62	6908	GF.			STOCK SIZE							
A	1	STOCK SIZE WAS .051	11-2-60	3361	W.F.			BERYLIUM COPPER							
								MATERIAL							
ISSUE ITEM CHANGED FROM			DATE	CH. NO.	DRAFTS	CHECKER	ENG. APP.	* DRAWN		CHECKED	FINAL APPROVAL				
TOLERANCES			SCALE: DOUBLE SIZE					TYPE & TEMPER		HEAT TREAT. SPEC.					
DEC. DIM. ±			MAXIMUM ALLOWABLE TOLERANCES HAVE BEEN DETERMINED AND ANY DEVIATIONS WILL BE CAUSE FOR REJECTION: REMOVE ALL BURRS AND SHARP EDGES					SILVER PLATE .0003		FINISH & SPEC. NO.					
FRAC. DIM. ±								ELEC. DES. APP.		MECH. DES. APP.		MS-2252		D	
ANGULAR DIM. ±															

REQ. PER. UNIT	USED ON		
	MODEL	ASS'Y. NO.	DATE
1	CPP-5		4-26-61

MS-2557

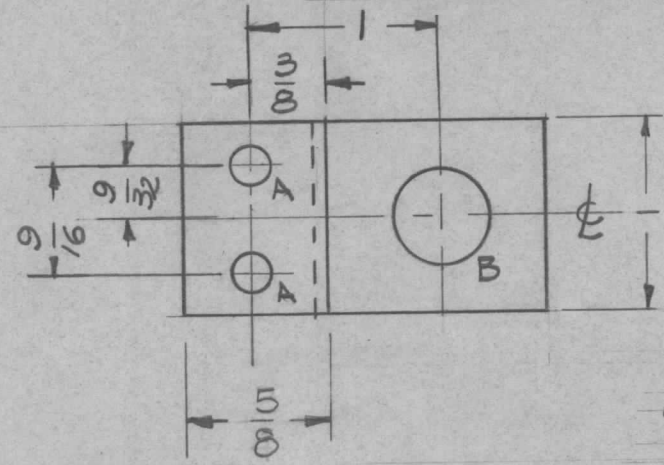


1 MOUNT ITEM 1 IN ALL "A" HOLES AS SHOWN.

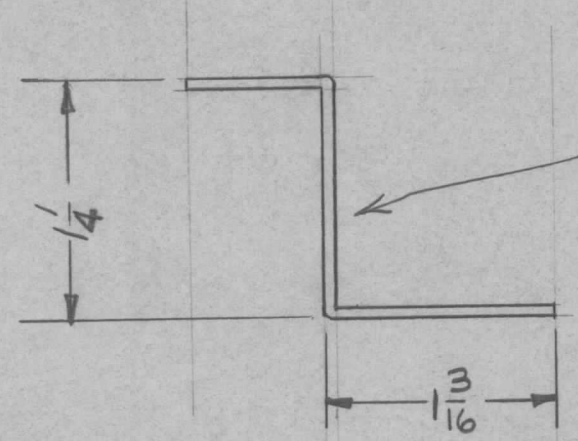
A ~ .221-.224 DIA. 2 REQ.
 B ~ $\frac{7}{32}$ DIA. 4 REQ.

		2	1	NT-129-832-4	NUT, ROUND, SWAGE TYPE			
ISSUE	ITEM	CHANGED FROM	DATE	CH. NO.	DRAFTS	CHECKER	ENG. APP.	REQ. ITEM
								PART NO.
								DESCRIPTION
								SYMBOL
								.081
								STOCK SIZE
								ALUMINUM
								MATERIAL
								5052-H32
								TYPE & TEMPER
								HEAT TREAT. SPEC.
								5404 YELL; IRIDITE
								FINISH & SPEC. NO.
								ELEC. DES. APP
								MECH. DES. APP
								THE TECHNICAL MATERIEL CORP. MAMARONECK, NEW YORK
								TRANSFORMER, SUPPORT BRACKET
								W.A.F. <i>[Signature]</i>
								FINAL APPROVAL
								MS-2557

REQ. PER UNIT	USED ON			MS2274	B
	MODEL	ASS'Y. NO.	DATE		
	3	GPT-40K AR-116	5-16-60		
1	GPT-40K AP-104	5-16-60			



A - 13/64 (.203) D. 2
 B - 1/2 (.5) D. 1



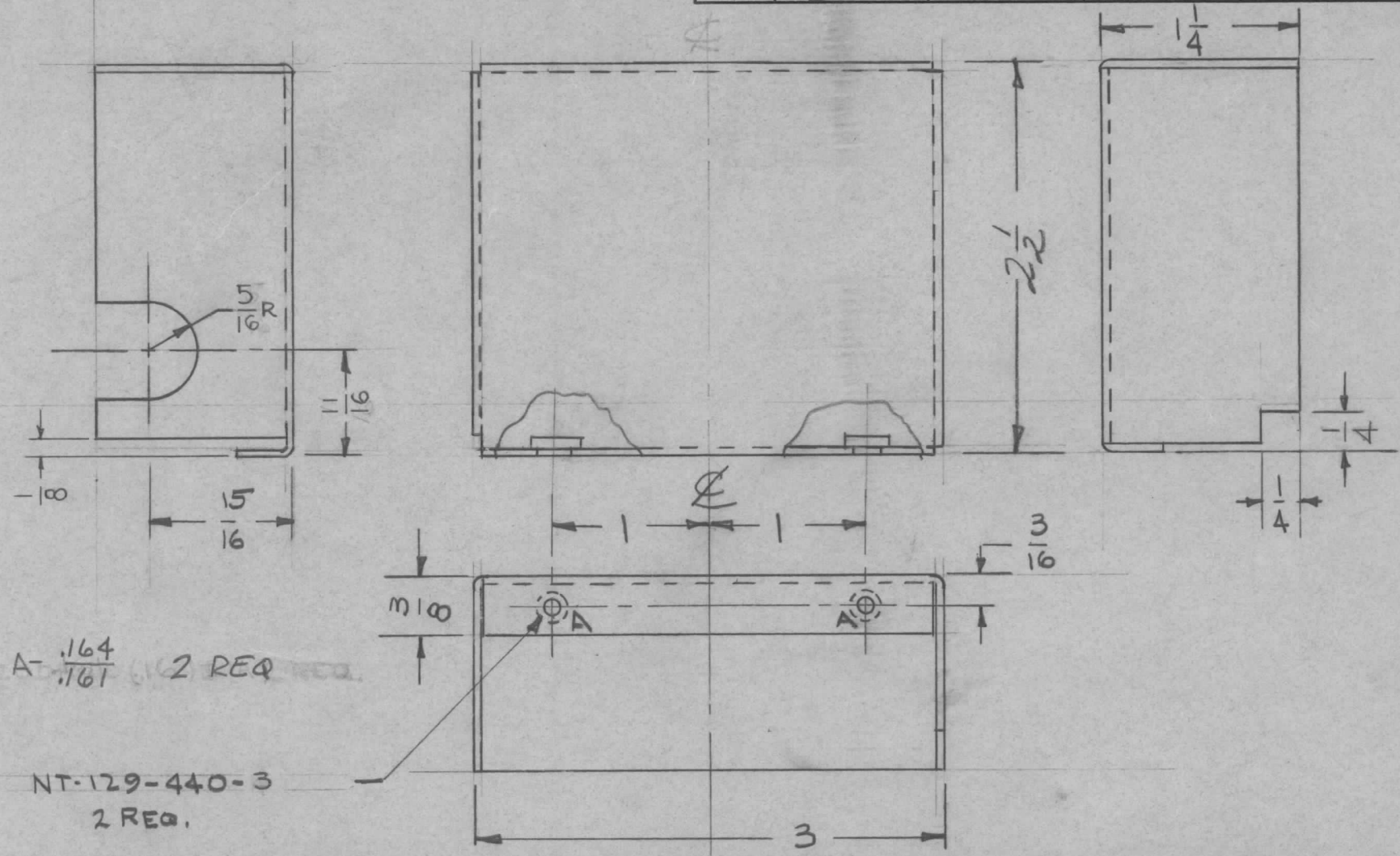
MARK TMC PT. NO.
 1/8 HIGH GOTHIC
 W/LATEST REV.
 LETTER.

ISSUE	ITEM	CHANGED FROM	DATE	CH. NO.	DRAFTS	CHECKER	ENG. APP.	REQ. ITEM	PART NO.	DESCRIPTION	SYMBOL		
									064	THE TECHNICAL MATERIEL CORP. MAMARONECK, NEW YORK	BRACKET, INSULATOR		
									ALUMINUM				
									MATERIAL				
									5052-H 32				
									TYPE & TEMPER	HEAT TREAT. SPEC.	DRAWN	CHECKED	FINAL APPROVAL
									S404 - YEL. IRIDITE				
									FINISH & SPEC. NO.	ELEC. DES. APP.	MECH. DES. APP.		
												MS2274	B

DEC. DIM. ±
 FRAC. DIM. ± 1/64
 ANGULAR DIM. ±

SCALE:
 MAXIMUM ALLOWABLE TOLERANCES HAVE BEEN DETERMINED AND ANY DEVIATIONS WILL BE CAUSE FOR REJECTION.
 REMOVE ALL BURRS AND SHARP EDGES

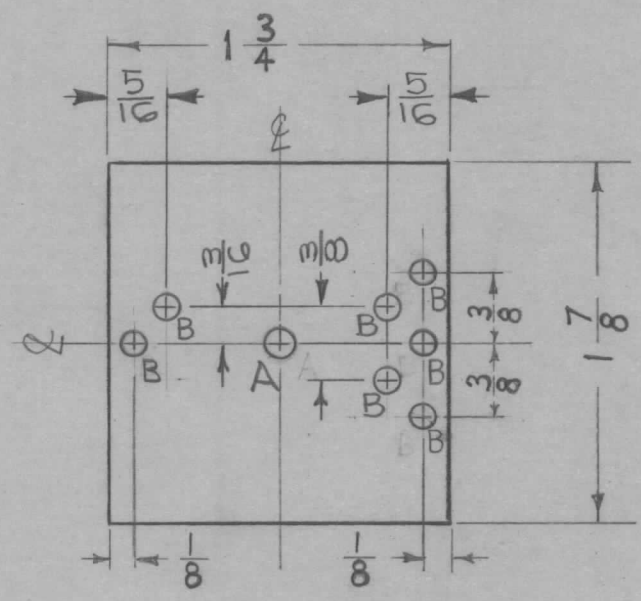
REQ. PER UNIT	USED ON			MS-2275	B
	MODEL	ASS'Y. NO.	DATE		
1	CBE-1		5-19-60		



REQ.	ITEM	PART NO.	DESCRIPTION			SYMBOL					
		.051	THE TECHNICAL MATERIEL CORP.								
		STOCK SIZE	MAMARONECK, NEW YORK								
B	1	.161-.164 WAS #20 DR NT-129-440-3 WAS NT-129-440-4	1/18/63	10451	<i>[Signature]</i>	SHIELD, POWER AMP.					
A	1	1/8 NOTCH ADDED	8/17/60	<i>[Signature]</i>	<i>[Signature]</i>						
ISSUE	ITEM	CHANGED FROM	DATE	CH. NO.	DRAFTS	CHECKER	ENG. APP.				
TOLERANCES			SCALE: FULL				5052-H32	<i>[Signature]</i>			
DEC. DIM. ±			MAXIMUM ALLOWABLE TOLERANCES HAVE BEEN DETERMINED AND ANY DEVIATIONS WILL BE CAUSE FOR REJECTION: REMOVE ALL BURRS AND SHARP EDGES				TYPE & TEMPER	HEAT TREAT. SPEC.			
FRAC. DIM. ±							5052-H32		DRAWN	CHECKED	
ANGULAR DIM. ±									<i>[Signature]</i>	<i>[Signature]</i>	
			1/64				FINISH & SPEC. NO.	ELEC. DES. APP	MECH. DES. APP	MS-2275	B

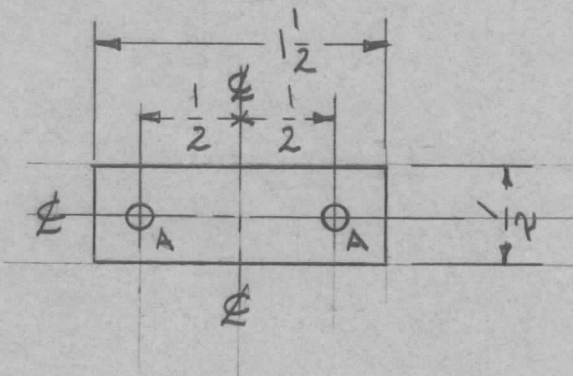
REQ. PER UNIT	USED ON			MS-2276	B
	MODEL	ASS'Y. NO.	DATE		
1	CLL-1		5-17-60		

A ~ $\frac{5}{32}$ DIA. 711 D 1 REQ.
 B ~ $\frac{1}{8}$ DIA. 993 B 7 REQ.



							REQ.	ITEM	PART NO.	DESCRIPTION	SYMBOL		
									.040	THE TECHNICAL MATERIEL CORP.			
									STOCK SIZE	MAMARONECK, NEW YORK			
									ALUMINUM	PLATE, MOUNTING			
									MATERIAL				
B	1	3 "B" HOLES ADDED	G-23-63	9382	<i>R. N.O.</i>	<i>W.B.</i>							
A	2	"B" HOLES WERE 3/32 D.	5-15-61	4891	<i>N.G.F.</i>	<i>J.C.S.</i>							
A	1	"A" HOLE WAS 1/64 D.											
ISSUE	ITEM	CHANGED FROM	DATE	CH. NO.	DRAFTS	CHECKER	ENG. APP.						
TOLERANCES			SCALE:				5052-H32			<i>[Signature]</i>	<i>[Signature]</i>		
DEC. DIM. ±			MAXIMUM ALLOWABLE TOLERANCES HAVE BEEN DETERMINED AND ANY DEVIATIONS WILL BE CAUSE FOR REJECTION. REMOVE ALL BURRS AND SHARP EDGES				TYPE & TEMPER	HEAT TREAT. SPEC.	DRAWN	CHECKED	FINAL APPROVAL		
FRAC. DIM. ± 1/64							S404 YELL. IRIDITE			<i>[Signature]</i>		MS-2276	B
ANGULAR DIM. ±							FINISH & SPEC. NO.	ELEC. DES. APP	MECH. DES. APP				

REQ. PER UNIT	USED ON			MS-2277	Ø
	MODEL	ASS'Y. NO.	DATE		
2	CPP-2		5-2-60		



A ~ 1/8 (.125) D. HOLES

2 REQ.

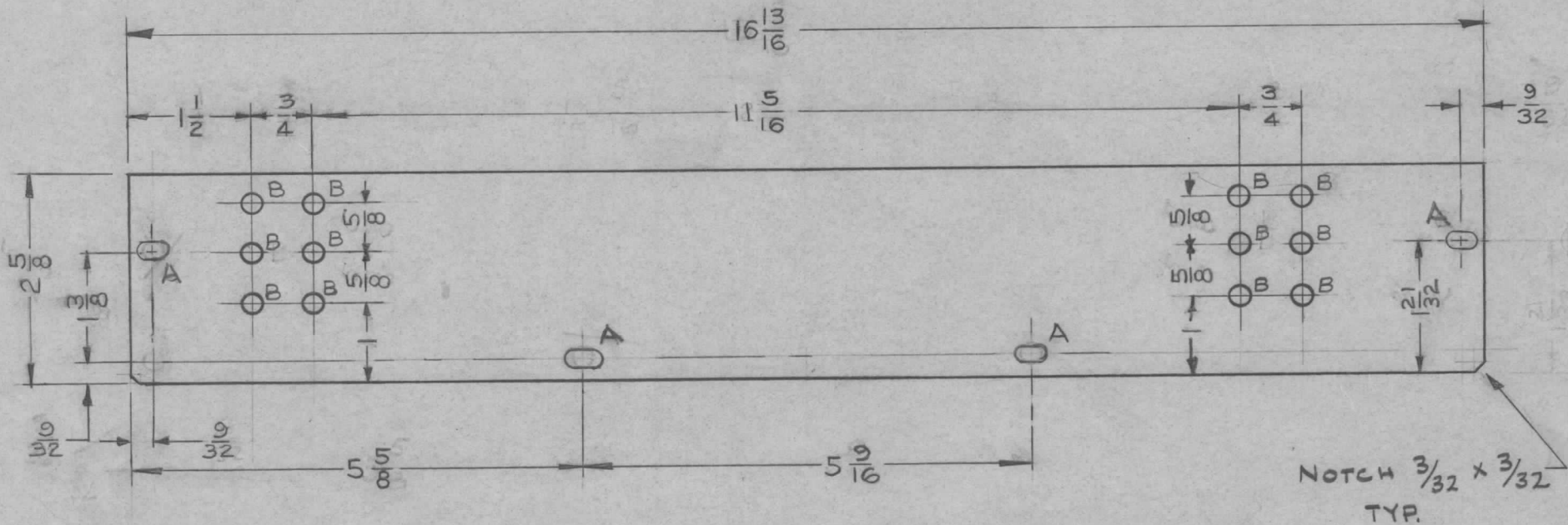
UNLESS OTHERWISE SPECIFIED
DIMENSIONS ARE IN INCHES AND INCLUDE
CHEMICALLY APPLIED OR PLATED FINISHES

DECIMALS	TOLERANCES	FRACTIONS
.X ± .05		± 1/64
.XX ± .01		ANGLES
.XXX ± .005		± 0° 30'

CUT HERE
GUARANTEED
2-66

REQ.	ITEM	PART NO.	DESCRIPTION	SYMBOL									
		5051	THE TECHNICAL MATERIEL CORP.										
		STOCK SIZE	MAMARONECK, NEW YORK										
		ALUMINUM	JUMPER BAR, RECTIFIER BOARD										
		MATERIAL											
		5052-H32											
			<i>ICRILLO</i>										
			<i>file</i>										
				<i>STM 9/26/69</i>									
ISSUE	ITEM	CHANGED FROM	DATE	CH. NO.	DRAFTS	CHECKER	ENG. APP.						
		ORIGINAL RELEASE	9/26/69										
TOLERANCES			SCALE:										
DEC. DIM. ±			MAXIMUM ALLOWABLE TOLERANCES HAVE BEEN DETERMINED AND ANY DEVIATIONS WILL BE CAUSE FOR REJECTION.										
FRAC. DIM. ±			REMOVE ALL BURRS AND SHARP EDGES										
ANGULAR DIM. ±			TYPE & TEMPER			HEATTREAT. SPEC.		DRAWN		CHECKED		FINAL APPROVAL	
			S404-YEL. IRIDITE									MS-2277	
			FINISH & SPEC. NO.			ELEC. DES. APP.		MECH. DES. APP.				Ø	

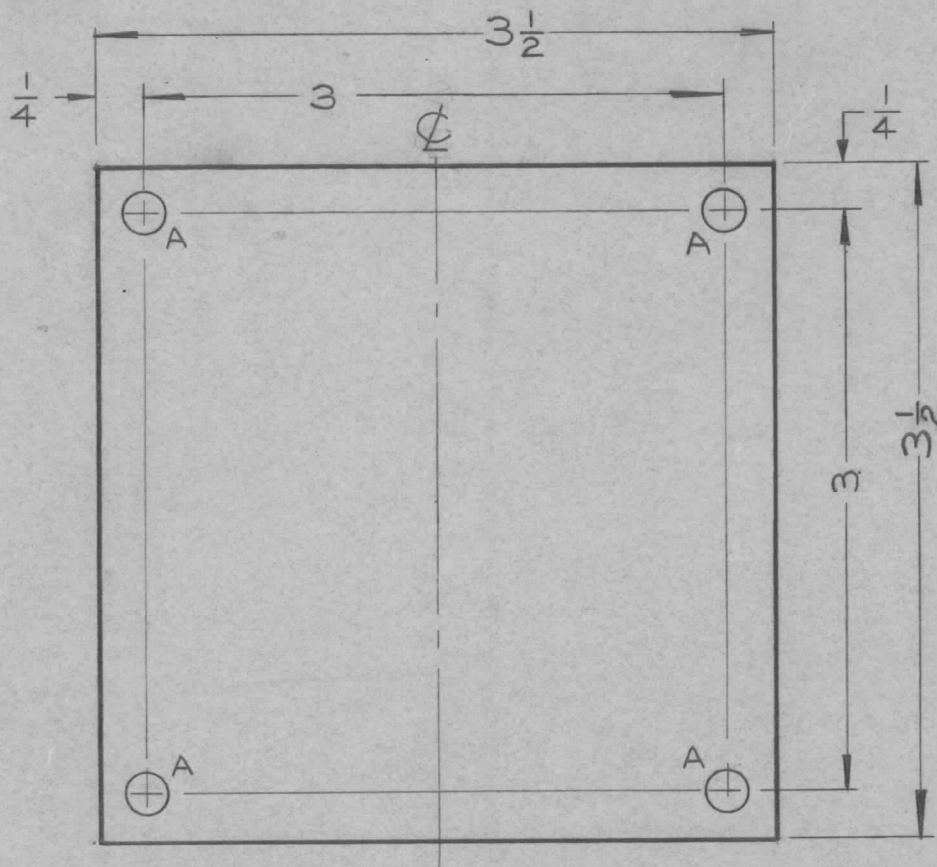
REQ. PER UNIT	USED ON			MS-2278	C
	MODEL	ASS'Y. NO.	DATE		
	2	CPP-1	2		
2	CPP-5		9-5-63		



NOTE
 A $\frac{1}{16} \times \frac{1}{32}$ SLOTS 4 REQ
 B $\frac{1}{4}$ D. 12 REQ.
 C $\frac{1}{16} \times \frac{1}{16}$ SLOTS 2 REQ

C	1	UPDATED DWG PER EMN. NO. 10168	10/14/63	10168	MT	MT	MT	4	2	FS-109-3	RING, STUD RETAINING						
B	1	"A" Holes were $\frac{1}{16}$ D	11-4-60	3391	MT	MT	MT	4	1	FS-109-1	STUD W/FLAT HEAD						
A	3	ITEM 1 & 2 FROM BUILDUP DELETED	5-24-60	2362	Cy	CB	MT	THE TECHNICAL MATERIEL CORP. MAMARONECK, NEW YORK COVER PLATE									
	2	NOTE DELETED											.051 STOCK SIZE				
	1	"A" & "B" HOLES ADDED											ALUMINUM MATERIAL				
ISSUE ITEM CHANGED FROM			DATE	CH. NO.	DRAFTS	CHECKER	ENG. APP.	5052-H32		DRAWN			CHECKED		FINAL APPROVAL		
TOLERANCES			SCALE: $\frac{1}{16}$					S404-YEL. IRIDITE		DRAWN		CHECKED		MS-2278			
DEC. DIM. \pm FRAC. DIM. \pm $\frac{1}{64}$ ANGULAR DIM. \pm			MAXIMUM ALLOWABLE TOLERANCES HAVE BEEN DETERMINED AND ANY DEVIATIONS WILL BE CAUSE FOR REJECTION: REMOVE ALL BURRS AND SHARP EDGES					FINISH & SPEC. NO.		ELEC. DES. APP		MECH. DES. APP		C			

REQ. PER UNIT	USED ON			MS-2282	A
	MODEL	ASS'Y. NO.	DATE		
2	GPT-10K		5-27-60		

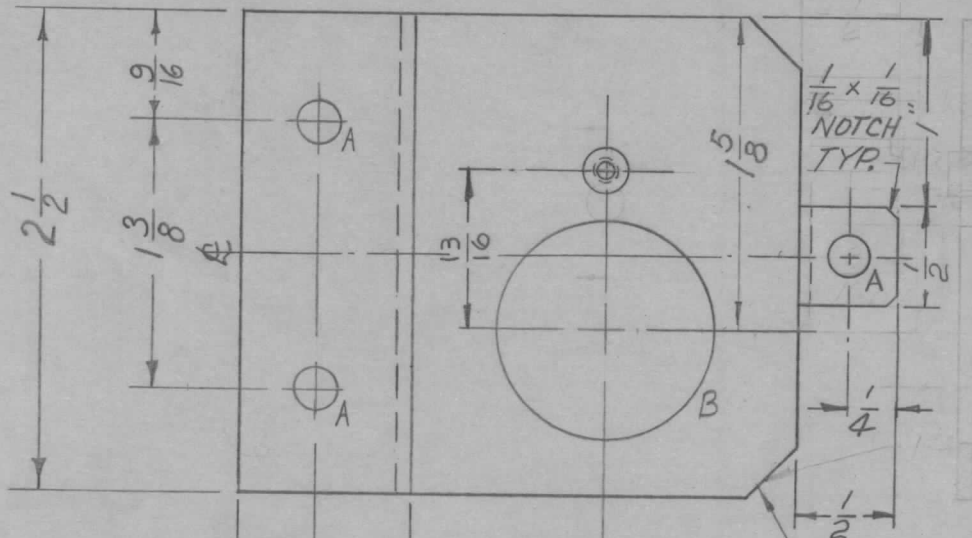


A \surd 13/64 (.203) DIA. HO 4 REQ.

REF. MS-1592

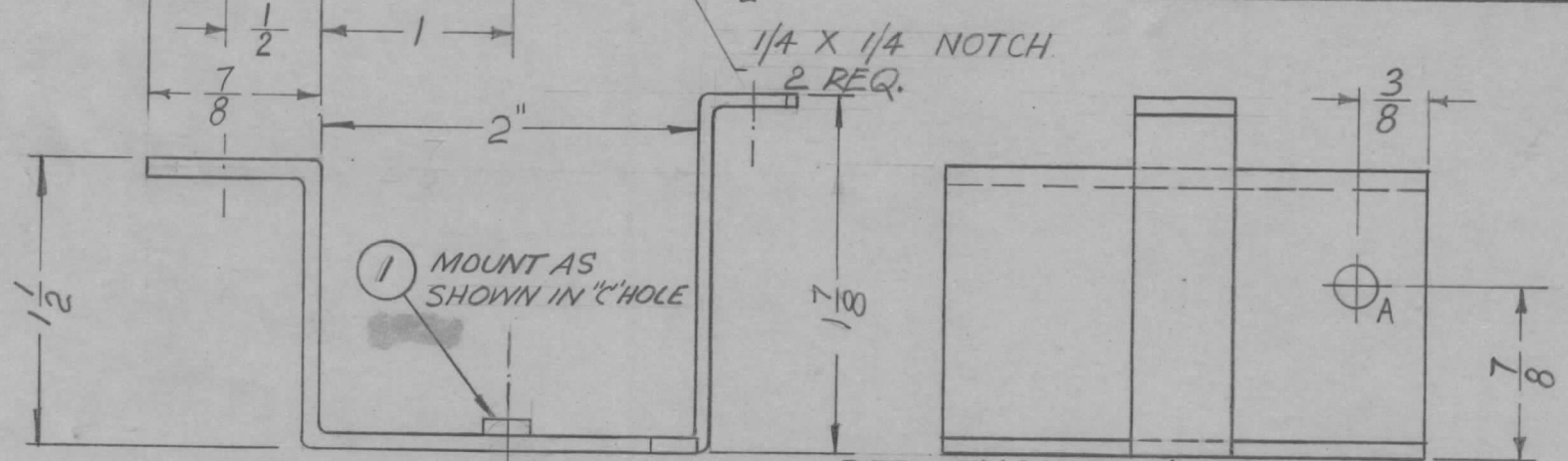
								REQ.	ITEM	PART NO.	DESCRIPTION	SYMBOL				
										.064	THE TECHNICAL MATERIEL CORP. MAMARONECK, NEW YORK COVER ACCESS HOLE					
										STOCK SIZE						
										ALUMINUM						
										MATERIAL						
A	1	"A" HOLE WAS 13/64 (.8125) D.	7-19.61	5301	G.D.L	RU	16	5052-H32		cus	JC/Biele	QQ				
ISSUE	ITEM	CHANGED FROM	DATE	CH. NO.	DRAFTS	CHECKER	ENG. APP.									
TOLERANCES			SCALE: FULL					TYPE & TEMPER		HEAT TREAT. SPEC.	DRAWN	CHECKED	FINAL APPROVAL			
DEC. DIM. \pm			MAXIMUM ALLOWABLE TOLERANCES HAVE BEEN DETERMINED AND ANY DEVIATIONS WILL BE CAUSE FOR REJECTION. REMOVE ALL BURRS AND SHARP EDGES					5404 IRIDITE								
FRAC. DIM. \pm 1/64								FINISH & SPEC. NO.		ELEC. DES. APP.	MECH. DES. APP.					
ANGULAR DIM. \pm																
											MS-2282	A				

REQ. PER UNIT	USED ON			MS-2290	C
	MODEL	ASS'Y. NO.	DATE		
1	GPT-40K	AP-103	6-6-60		



A - 7/32 DIA. 4 REQ.
 B - 13/8 DIA. 1 REQ.
 C - .161 DIA. 1 REQ.

REQ	ITEM	PART NO.	DESCRIPTION	SYM.
1	1	NT729-440-4	NUT, SWAGE	

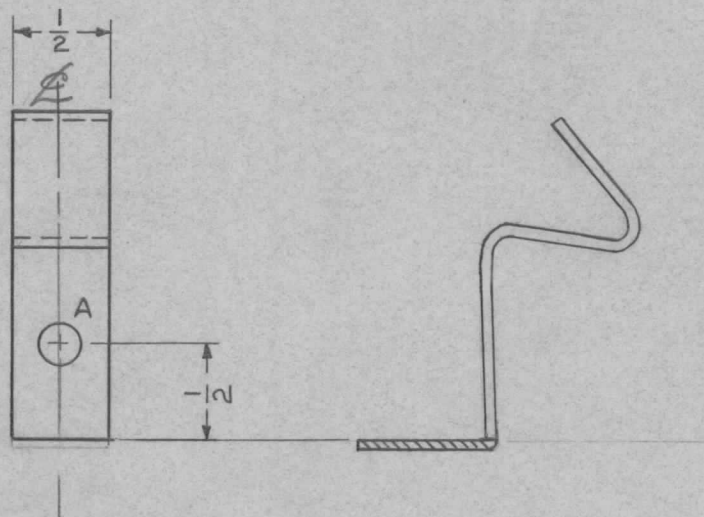


REF ~ TMC DWG. NO. LD-800 (1)

ISSUE	ITEM	CHANGED FROM	DATE	CH. NO.	DRAFTS	CHECKER	ENG. APP.	REQ.	ITEM	PART NO.	DESCRIPTION	SYMBOL	
C	1	ADDED LEG (1/2 DIA.) ITEM (1)	7-21-63	3462	AR	MP	MP			.081	THE TECHNICAL MATERIEL CORP. MAMARONECK, NEW YORK BRACKET, HV LAMP		
B	1	3/64 DIMPLE ADDED	2-16-62	6386	Ken	MP	MP			STOCK SIZE			
A	1	13/8 DIA WAS 1 1/8	7-19-60	2593	P	MP	MP			ALUMINUM			
TOLERANCES								MATERIAL		5052-H32			
DEC. DIM. ±			SCALE: FULL					TYPE & TEMPER		HEAT TREAT. SPEC.	DRAWN	CHECKED	FINAL APPROVAL
FRAC. DIM. ± 1/64			MAXIMUM ALLOWABLE TOLERANCES HAVE BEEN DETERMINED AND ANY DEVIATIONS WILL BE CAUSE FOR REJECTION. REMOVE ALL BURRS AND SHARP EDGES					S404 YELL. IRIDITE					
ANGULAR DIM. ±								FINISH & SPEC. NO.		ELEC. DES. APP	MECH. DES. APP		
											MS-2290	C	

REQ. PER UNIT	USED ON			MS-2293
	MODEL	ASS'Y. NO.	DATE	
2	GPT-40K	AP-104	6-7-60	

A \approx 13/64 (.203) D. 1 REQ.



NOTE:

1. REMOVE SHADED PORTION & ADD HOLE AS SHOWN.
2. THIS BRACKET SUPPLIED W/RW-117-21 (MODIFIED AS SHOWN)
(MTG BRACKET CATALOG # 815)

WARD 100F

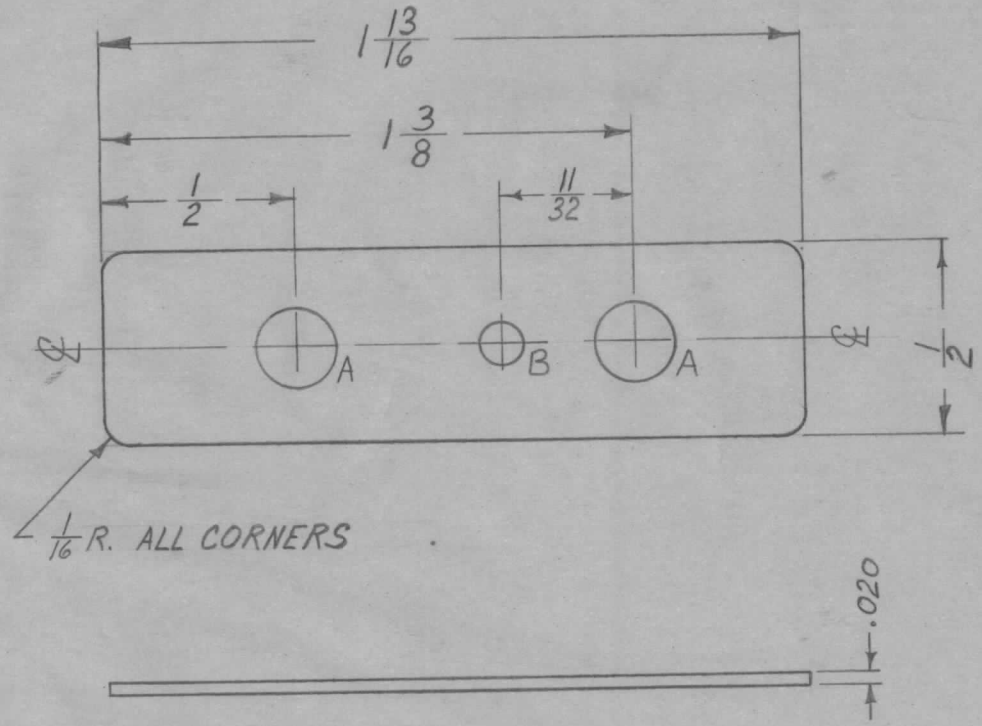
REF RW-117-21

REQ.	ITEM	PART NO.	DESCRIPTION			SYMBOL	
			THE TECHNICAL MATERIEL CORP.				
			MAMARONECK, NEW YORK				
			BRACKET, RESISTOR MTG.				
			MATERIAL				
			MATERIAL				
			MATERIAL				
			MATERIAL				
			MATERIAL				
ISSUE	ITEM	CHANGED FROM	DATE	CH. NO.	DRAFTS	CHECKER	ENG. APP.
TOLERANCES			SCALE: FULL				
DEC. DIM. \pm			MAXIMUM ALLOWABLE TOLERANCES HAVE BEEN DETERMINED AND ANY DEVIATIONS WILL BE CAUSE FOR REJECTION.				
FRAC. DIM. \pm 1/64			REMOVE ALL BURRS AND SHARP EDGES				
ANGULAR DIM. \pm							
TYPE & TEMPER		HEATTREAT. SPEC.	DRAWN	CHECKED	FINAL APPROVAL		
					MS-2293		
FINISH & SPEC. NO.		ELEC. DES. APP	MECH. DES. APP				

REQ. PER. UNIT	USED ON		
	MODEL	ASS'Y. NO.	DATE
12	GPT-10K	AS-102	6-8-60
28	GPT-40K	AX-209	6-8-60
6	GPT-40K	AX-215	10-14-60

MS-2294

SPARE PARTS ONLY

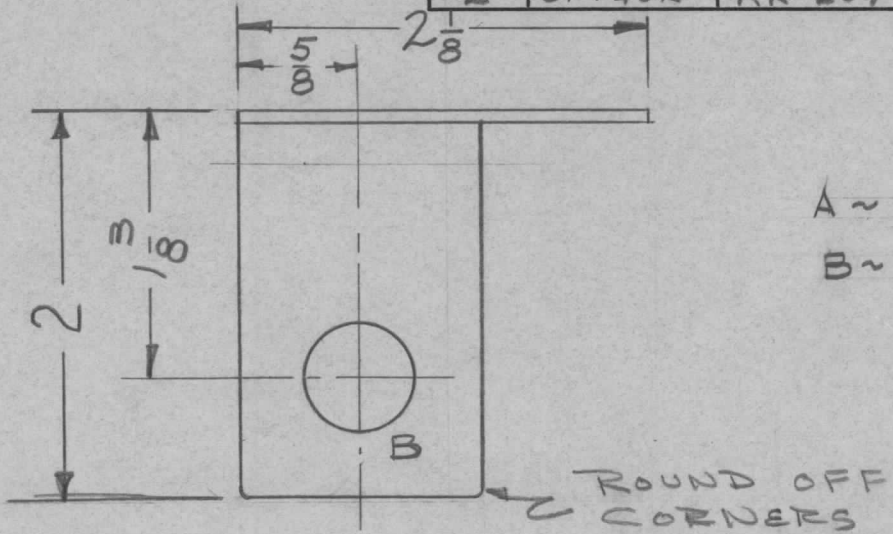


A- 13/64 (.203) D.
B- 7/64 (.109) D.

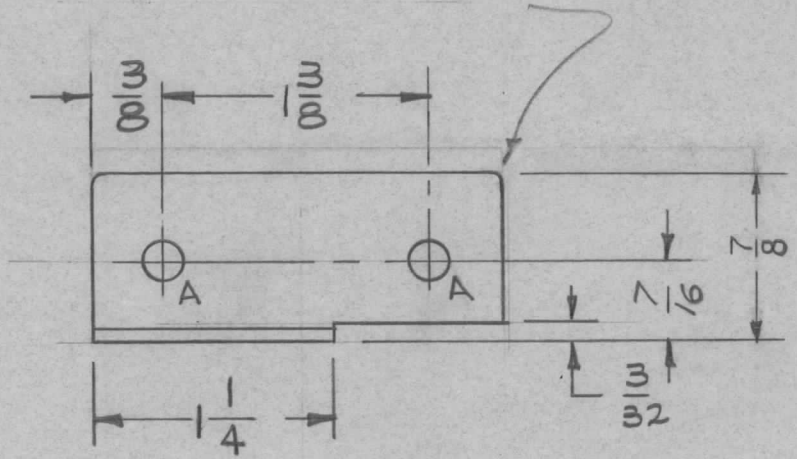
2 REQ.
1 REQ.

ISSUE	ITEM	CHANGED FROM	DATE	CH. NO.	DRAFTS	CHECKER	ENG. APP.	REQ. ITEM	PART NO.	DESCRIPTION	SYMBOL	
									.020	THE TECHNICAL MATERIEL CORP.		
									STOCK SIZE	MAMARONECK, NEW YORK		
									BERYLLIUM COPPER	SHIM, CONTACT		
									MATERIAL			
									SPRING TEMPER	<i>[Signature]</i>	<i>[Signature]</i>	
									TYPE & TEMPER	DRAWN	CHECKED	
									HEAT TREAT. SPEC.			
									.0005 SILVER PLATE			
									.000025 RHODIUM PLATE			
									FINISH & SPEC. NO.	ELEC. DES. APP	MECH. DES. APP	
TOLERANCES			SCALE: 2:1					MAXIMUM ALLOWABLE TOLERANCES HAVE BEEN DETERMINED AND ANY DEVIATIONS WILL BE CAUSE FOR REJECTION. REMOVE ALL BURRS AND SHARP EDGES				
DEC. DIM. ± .005												
FRAC. DIM. ± 1/64												
ANGULAR DIM. ±												
										MS-2294		

REQ. PER UNIT	USED ON			MS-2296	A
	MODEL	ASS'Y. NO.	DATE		
2	GPT4DK	AK-209	6-8-60		



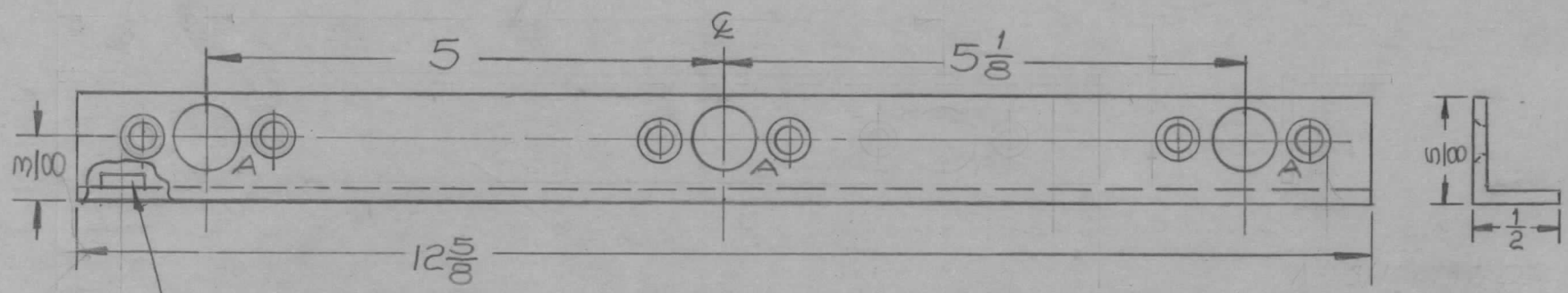
A ~ 13/64 (.203) D. 2
 B ~ 9/16 (.562) D. 1



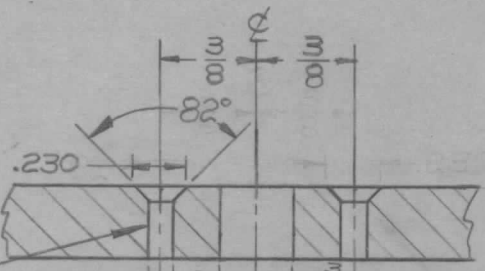
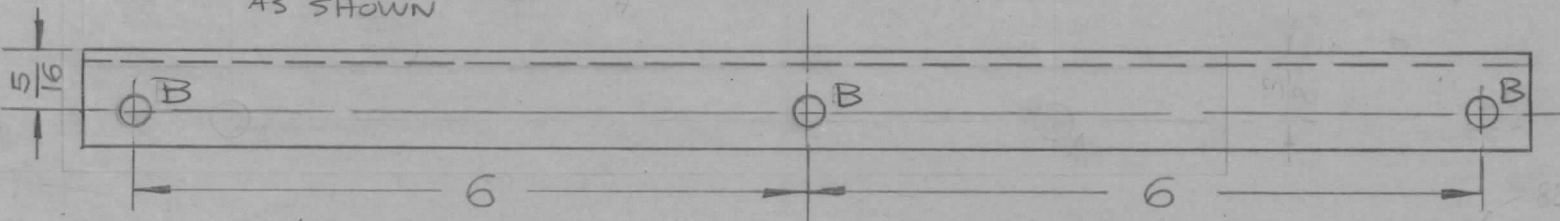
REQ.	ITEM	PART NO.	DESCRIPTION				SYMBOL
		064	THE TECHNICAL MATERIEL CORP.				
		STOCK SIZE	MAMARONECK, NEW YORK				
		ALUMINUM	BRACKET, CAPACITOR				
		MATERIAL					
A	2	7/8 DIM. WAS 1"	6-24-60	2532	CS	Jde	APP
	1	ROUND CORNERS					
ISSUE	ITEM	CHANGED FROM	DATE	CH. NO.	DRAFTS	CHECKER	ENG. APP.
TOLERANCES			SCALE: DO NOT SCALE				
DEC. DIM. ±			MAXIMUM ALLOWABLE TOLERANCES HAVE BEEN DETERMINED AND ANY DEVIATIONS WILL BE CAUSE FOR REJECTION.				
FRAC. DIM. ±			REMOVE ALL BURRS AND SHARP EDGES				
ANGULAR DIM. ±							
		1/64			5052-M32	Jde	APP
					TYPE & TEMPER	HEATTREAT. SPEC.	DRAWN
					S404-YEL. IRIDITE		CHECKED
					FINISH & SPEC. NO.	ELEC. DES. APP	MECH. DES. APP
							MS-2296
							A

REQ. PER UNIT	USED ON		
	MODEL	ASS'Y. NO.	DATE
1	CMO-1		6-13-60
1	CMO-2		6-13-60

MS-2298 C



1 MOUNTED IN ALL "B" HOLES AS SHOWN



B - .161 DIA. - 3 REQ.

(TYP) .144 - 3 REQ. DETAIL A - 3 REQ.

REQ.	ITEM	PART NO.	DESCRIPTION	SYMBOL
3	1	NT-129-440-4	NUT, SWAGE	
		.064	THE TECHNICAL MATERIEL CORP.	
		ALUMINUM	MAMARONECK, NEW YORK	
		5052-H32	COVER SUPPORT BRK'T.	
		S404 YELL. IRIDITE	TOP	
TOLERANCES		SCALE: (DO NOT SCALE)	DRAWN	CHECKED
DEC. DIM. ±		MAXIMUM ALLOWABLE TOLERANCES HAVE BEEN DETERMINED AND ANY DEVIATIONS WILL BE CAUSE FOR REJECTION. REMOVE ALL BURRS AND SHARP EDGES	FINAL APPROVAL	
FRAC. DIM. ± 1/64			MS-2298 C	
ANGULAR DIM. ±				
		FINISH & SPEC. NO.	ELEC. DES. APP	MECH. DES. APP