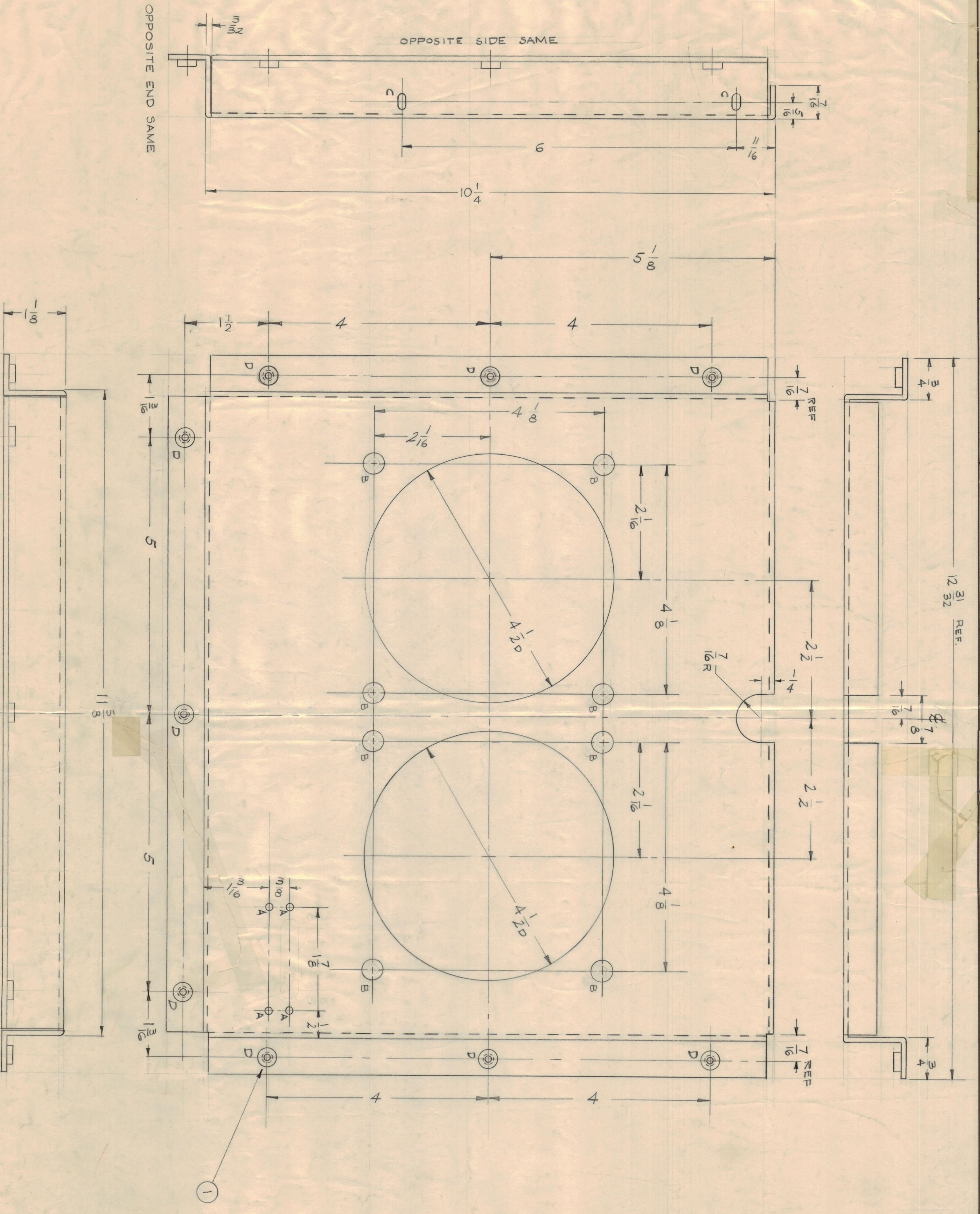


- A ~ 1/8 (.125) D.
- B ~ 3/8 (.375) D.
- C ~ 9/64 x 9/32 SLOTS
- D ~ (.21 - .224) FOR NT129-832-4



Ref. LD-891 (RAK 10)

REQ. ITEM	PART NO.	DESCRIPTION	SYMBOL																
1	NT-129-832-4	NUT, ROUND SWAGE TYPE																	
<table border="1"> <tr> <td>Q&I</td> <td>THE TECHNICAL MATERIEL CORP.</td> </tr> <tr> <td>STOCK SIZE</td> <td>MANHATTEN, NEW YORK</td> </tr> <tr> <td>MATERIAL</td> <td>BLOWER CHASSIS</td> </tr> <tr> <td>5052-H32</td> <td></td> </tr> <tr> <td>TYPE & TREATMENT</td> <td></td> </tr> <tr> <td>HEAT TREAT SPEC.</td> <td></td> </tr> <tr> <td>S-404 - VEL. IRIDITE</td> <td></td> </tr> <tr> <td>FINISH & SPEC. NO.</td> <td></td> </tr> </table>				Q&I	THE TECHNICAL MATERIEL CORP.	STOCK SIZE	MANHATTEN, NEW YORK	MATERIAL	BLOWER CHASSIS	5052-H32		TYPE & TREATMENT		HEAT TREAT SPEC.		S-404 - VEL. IRIDITE		FINISH & SPEC. NO.	
Q&I	THE TECHNICAL MATERIEL CORP.																		
STOCK SIZE	MANHATTEN, NEW YORK																		
MATERIAL	BLOWER CHASSIS																		
5052-H32																			
TYPE & TREATMENT																			
HEAT TREAT SPEC.																			
S-404 - VEL. IRIDITE																			
FINISH & SPEC. NO.																			

NOTICE TO PERSONS REVIEWING THIS DRAWING
 THE TECHNICAL MATERIEL CORPORATION claims proprietary right in the material disclosed herein. This drawing is issued in confidence for engineering information only and may not be reproduced or used to manufacture anything shown herein without permission from THE TECHNICAL MATERIEL CORPORATION to the user. This drawing is loaned for mutual assistance and is subject to recall at any time.
 Property of:
 THE TECHNICAL MATERIEL CORPORATION
 MANHATTEN, NEW YORK

REV.	DESCRIPTION	DATE	CHK. NO.	CHK. BY	DESIGNER	ENGINEER
A	1/2 WAS 1/8	4/30/61	1653	WJA	WJA	WJA
B	LOWER END CONENER - 1 3/16 DIM WAS TO 1 1/2	5/10/61	9274	WJA	WJA	WJA
C	1/8 WAS 3/16 & 3/16 DIM CONENER DELETED	5/10/61	9165	WJA	WJA	WJA
D	HOLE WAS 3/16 DIA. (18) DIA.	4/20/61	8902	WJA	WJA	WJA
E	1/8 WAS 5/16	1-17-61	3915	RU	WJA	WJA

ISSUE FOR: 7/16 DIM WAS 5/16
 TOLERANCES: SCALE: DO NOT SCALE
 FINISH & SPEC. NO. WILL BE CAUSE FOR REJECTION. REFER TO ALL DIMS AND SHOWN EDGES

APPROVED: [Signature]
 DATE: 1/64

MS-2287