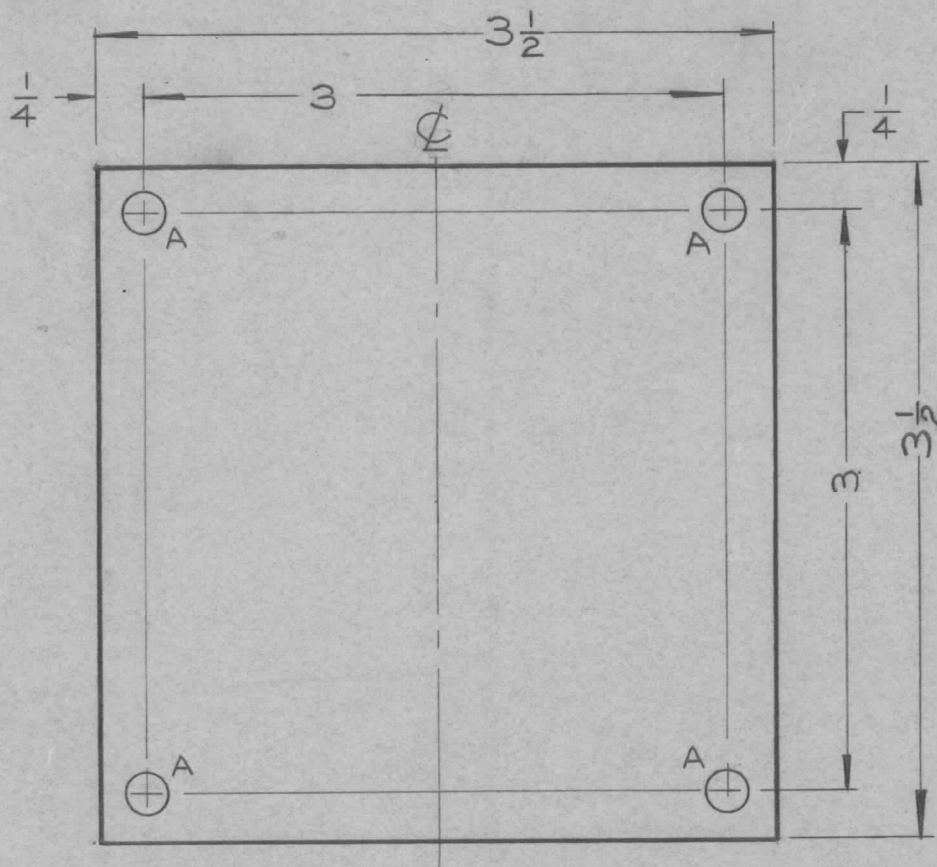
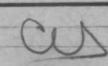
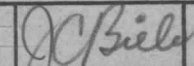



REQ. PER UNIT	USED ON			MS-2282	A
	MODEL	ASS'Y. NO.	DATE		
2	GPT-10K		5-27-60		



A \surd 13/64 (.203) DIA. HO 4 REQ.

REF. MS-1592

								REQ.	ITEM	PART NO.	DESCRIPTION	SYMBOL						
										.064	THE TECHNICAL MATERIEL CORP. MAMARONECK, NEW YORK COVER ACCESS HOLE							
										STOCK SIZE								
										ALUMINUM								
										MATERIAL								
A	1	"A" HOLE WAS 13/64 (.8125) D.	7-19.61	5301	G.D.L	RU	16			5052-H32	  							
ISSUE	ITEM	CHANGED FROM	DATE	CH. NO.	DRAFTS	CHECKER	ENG. APP.			TYPE & TEMPER	HEAT TREAT. SPEC.	DRAWN	CHECKED	FINAL APPROVAL				
TOLERANCES			SCALE: FULL							5404 IRIDITE								
DEC. DIM. \pm			MAXIMUM ALLOWABLE TOLERANCES HAVE BEEN DETERMINED AND ANY DEVIATIONS WILL BE CAUSE FOR REJECTION. REMOVE ALL BURRS AND SHARP EDGES															
FRAC. DIM. \pm 1/64																		
ANGULAR DIM. \pm																		
								FINISH & SPEC. NO.		ELEC. DES. APP.	MECH. DES. APP.	MS-2282	A					