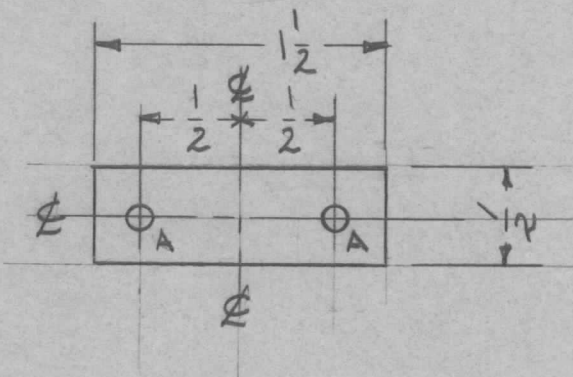


REQ. PER UNIT	USED ON			MS-2277	Ø
	MODEL	ASS'Y. NO.	DATE		
2	CPP-2		5-2-60		



A ~ 1/8 (.125) D. HOLES 2 REQ.

UNLESS OTHERWISE SPECIFIED
DIMENSIONS ARE IN INCHES AND INCLUDE
CHEMICALLY APPLIED OR PLATED FINISHES

DECIMALS	TOLERANCES	FRACTIONS
.X ± .05		± 1/64
.XX ± .01		ANGLES
.XXX ± .005		± 0° 30'

CUT HERE
GUARANTEED
2-66

REQ.	ITEM	PART NO.	DESCRIPTION	SYMBOL
		5051	THE TECHNICAL MATERIEL CORP.	
		STOCK SIZE	MAMARONECK, NEW YORK	
		ALUMINUM	JUMPER BAR, RECTIFIER BOARD	
		MATERIAL		
		5052-H32	<i>ICRILLO</i>	
		TYPE & TEMPER	DRAWN	
		HEATTREAT. SPEC.	CHECKED	
		S404-YEL. IRIDITE		
		FINISH & SPEC. NO.	ELEC. DES. APP	
			MECH. DES. APP	
			FINAL APPROVAL	
			MS-2277	Ø

ISSUE ITEM CHANGED FROM DATE CH. NO. DRAFTS CHECKER ENG. APP.

TOLERANCES

DEC. DIM. ±
FRAC. DIM. ±
ANGULAR DIM. ±

SCALE:
MAXIMUM ALLOWABLE TOLERANCES HAVE BEEN DETERMINED AND ANY DEVIATIONS WILL BE CAUSE FOR REJECTION.
REMOVE ALL BURRS AND SHARP EDGES

ORIGINAL RELEASE 9/26/69 (1)

STM 9/26/69