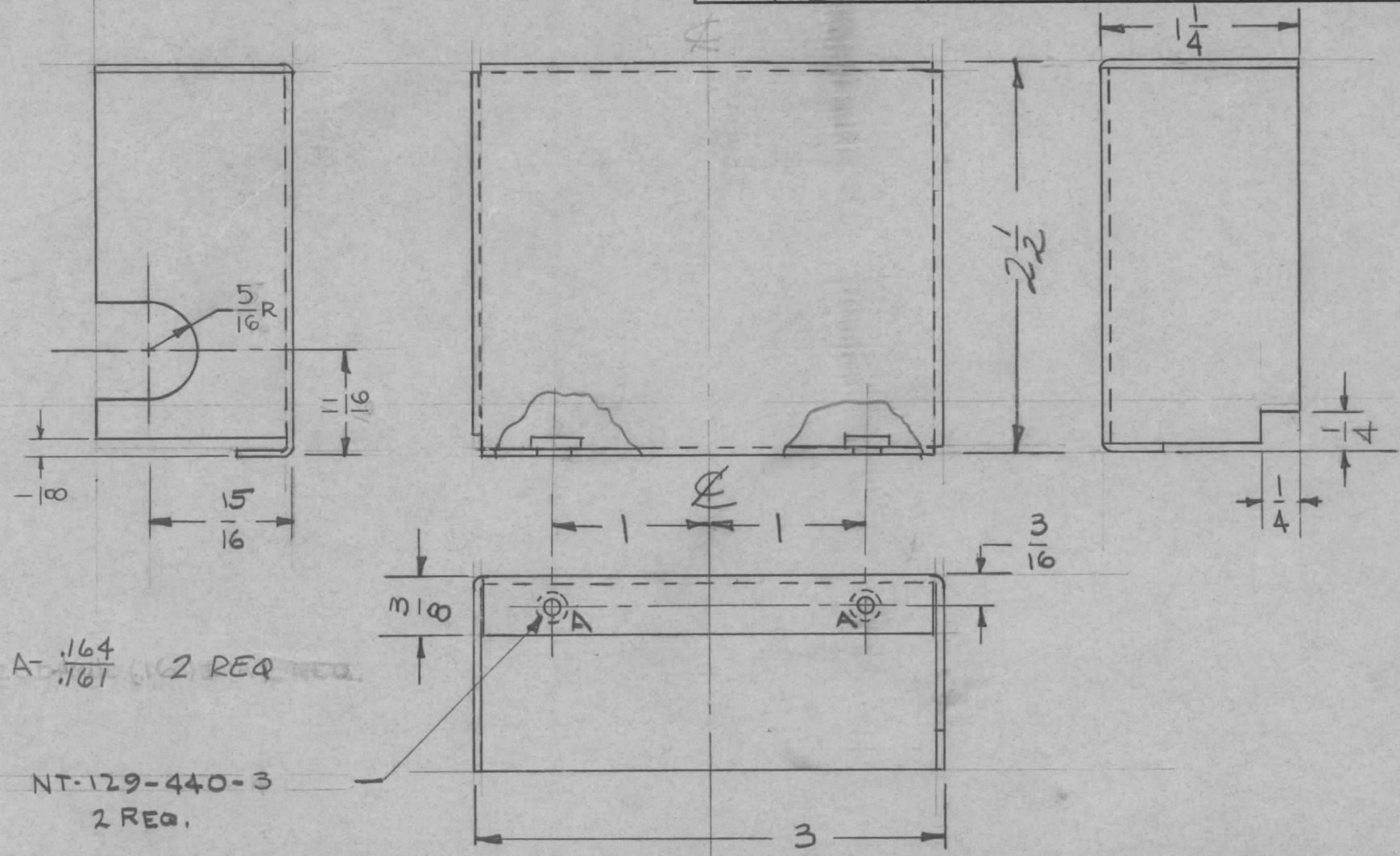


REQ. PER UNIT	USED ON			MS-2275	B
	MODEL	ASS'Y. NO.	DATE		
1	CBE-1		5-19-60		



REQ.	ITEM	PART NO.	DESCRIPTION			SYMBOL								
		.051	THE TECHNICAL MATERIEL CORP.											
		STOCK SIZE	MAMARONECK, NEW YORK											
B	1	ALUMINUM	SHIELD, POWER AMP.											
A	1	MATERIAL												
ISSUE	ITEM	CHANGED FROM	DATE	CH. NO.	DRAFTS	CHECKER	ENG. APP.							
TOLERANCES			SCALE: FULL				5052-H32	5404-YEL. IRIDITE						
DEC. DIM. ±			MAXIMUM ALLOWABLE TOLERANCES HAVE BEEN DETERMINED AND ANY DEVIATIONS WILL BE CAUSE FOR REJECTION: REMOVE ALL BURRS AND SHARP EDGES				DRAWN		CHECKED		FINAL APPROVAL			
FRAC. DIM. ±							ELEC. DES. APP		MECH. DES. APP		MS-2275		B	
ANGULAR DIM. ±														