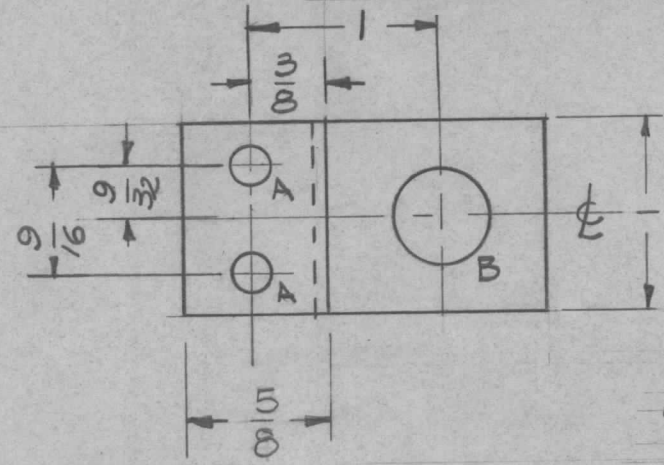
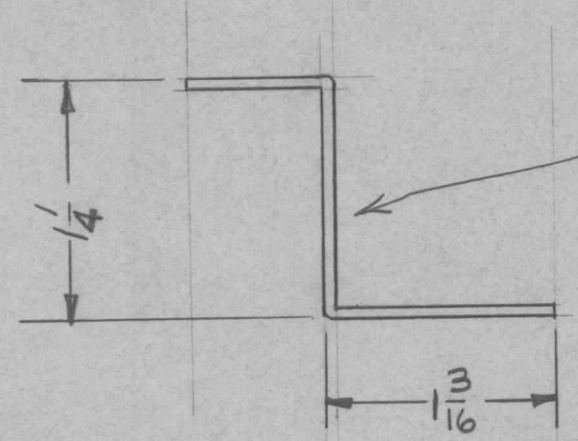


| | | | | | |
|---------------|---------|------------|---------|--------|---|
| REQ. PER UNIT | USED ON | | | MS2274 | B |
| | MODEL | ASS'Y. NO. | DATE | | |
| 3 | GPT-40K | AR-116 | 5-16-60 | | |
| 1 | GPT-40K | AP-104 | 5-16-60 | | |



A - 13/64 (.203) D. 2
 B - 1/2 (.5) D. 1



MARK TMC PT. NO.
 1/8 HIGH GOTHIC
 W/LATEST REV.
 LETTER.

| ISSUE | ITEM | CHANGED FROM | DATE | CH. NO. | DRAFTS | CHECKER | ENG. APP. | REQ. ITEM | PART NO. | DESCRIPTION | SYMBOL |
|----------------|------|--|---------|---------------------|--------|-------------------|-----------|-----------------|------------|------------------------------|--------|
| | | | | | | | | | 064 | THE TECHNICAL MATERIEL CORP. | |
| | | | | | | | | | STOCK SIZE | MAMARONECK, NEW YORK | |
| B | | 5/8 WAS 3/4 AOOTMC# | 3-6-67 | 17919 | L.A.K. | JCB | JCB | | ALUMINUM | BRACKET, INSULATOR | |
| A | 1 | DIM. WIDTH 1" Added | 7-19-60 | 2604 | CU | JHE | JCB | | MATERIAL | | |
| TOLERANCES | | SCALE: | | 5052-H 32 | | DRAWN | | CHECKED | | FINAL APPROVAL | |
| DEC. DIM. ± | | MAXIMUM ALLOWABLE TOLERANCES HAVE BEEN DETERMINED AND ANY DEVIATIONS WILL BE CAUSE FOR REJECTION. REMOVE ALL BURRS AND SHARP EDGES | | TYPE & TEMPER | | HEAT TREAT. SPEC. | | DRAWN | | FINAL APPROVAL | |
| FRAC. DIM. ± | | | | S404 - YEL. IRIDITE | | | | DRAWN | | FINAL APPROVAL | |
| ANGULAR DIM. ± | | | | FINISH & SPEC. NO. | | ELEC. DES. APP. | | MECH. DES. APP. | | FINAL APPROVAL | |
| | | 1/64 | | | | | | | | MS2274 B | |