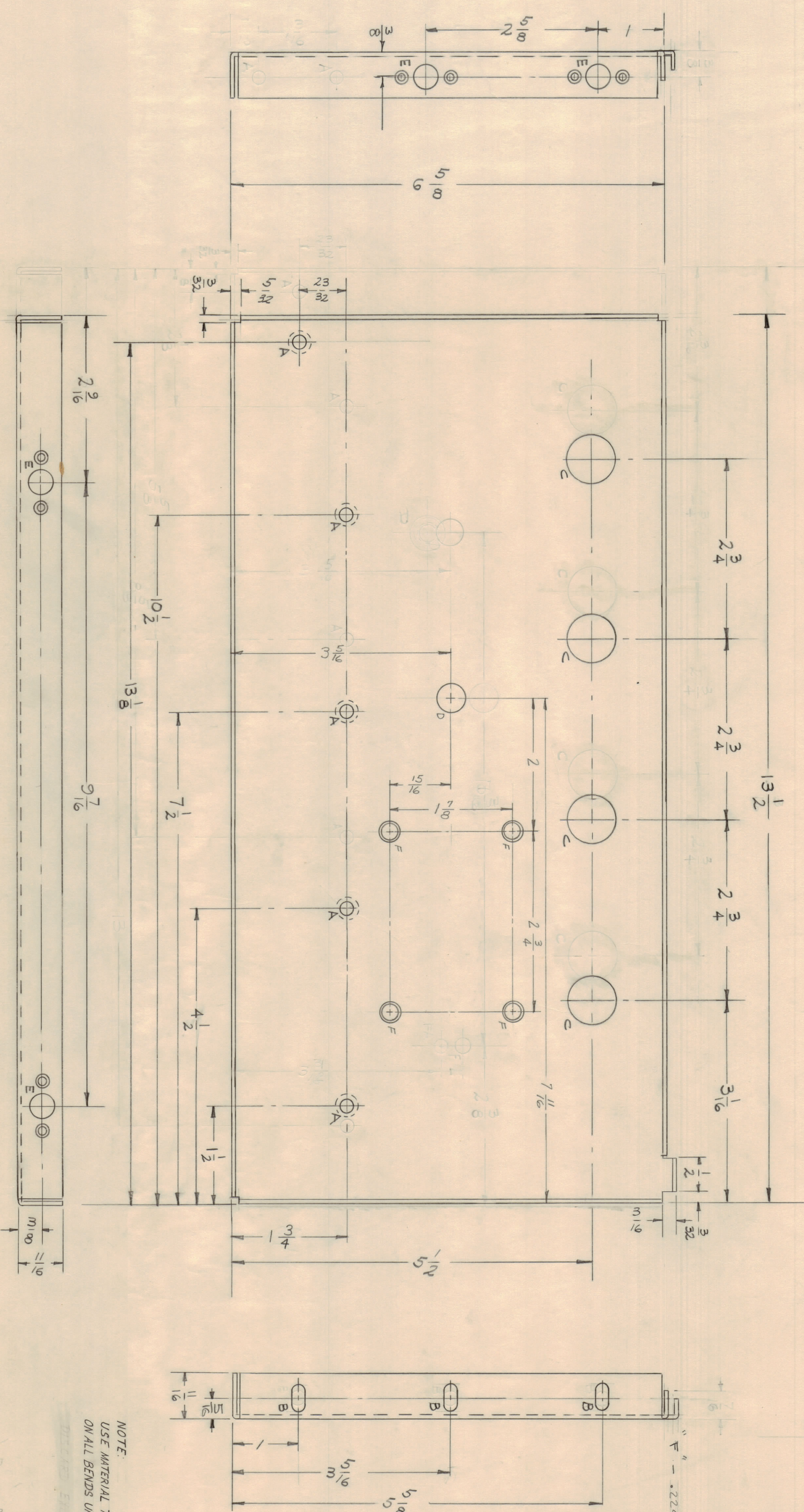
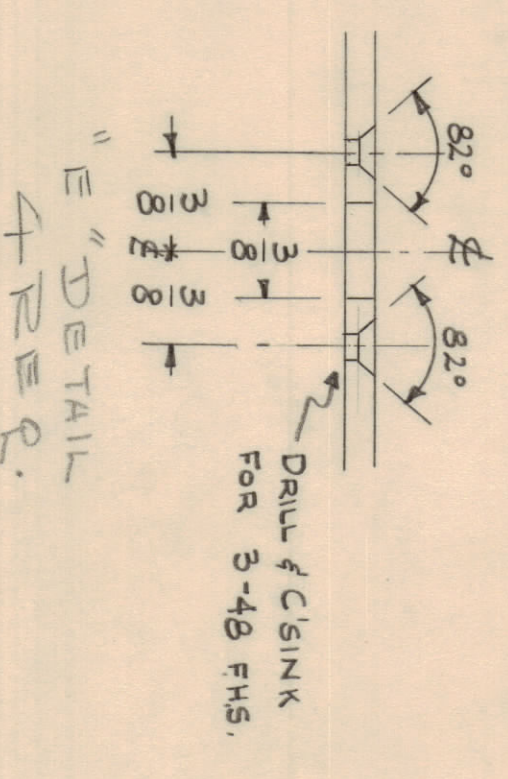


MS-2271-B
METAL STAMP THE PART NO
1/8 HIGH 80° RIC
1 MOUNT ITEM 1 IN
ALL 'F' HOLES AS
SHOWN AFTER FINISHING.



- A - C/SUNK FOR 8-32
- B - 13/64 X 13/32 SLOTS
- C - 3/4 (.75) D.
- D - 7/16 DIA
- E - SEE DETAIL



NOTE:
USE MATERIAL THICKNESS FOR MAX RADIUS
ON ALL BENDS UNLESS OTHERWISE SPECIFIED.

NOTE TO PERSONS RECEIVING THIS DRAWING
THE TECHNICAL MATERIAL CORPORATION claims property in any right in the material disclosed herein. This drawing is issued in confidence for engineering information only and may not be reproduced or used in any manner without the prior written permission of the TECHNICAL MATERIAL CORPORATION. This drawing is loaned for mutual assistance and is subject to recall at any time.

Property of:
THE TECHNICAL MATERIAL CORPORATION
MADISON, N.J.

DES. DIM. ±	
FRAC. DIM. ±	1/64
ABSOL. DIM. ±	

ISSUE NO.	1
DATE	10-8-62
SCALE	FULL
CHECKED BY	[Signature]
APPROVED BY	[Signature]

REQ. ITEM	2	DELETED		
REQ. ITEM	1	NT-129-032-4	NUT, ROUND SWAGE TYPE	
REQ. UNIT				

REQ. NO.	1	DVM-3		
REQ. UNIT				

NO. PART NO.	DVM-2
DATE	5-13-60
SECTION	
ARRV. NO.	
USED ON	
PRINTED & SPEC. NO.	

MATERIAL	ALUMINUM
STOCK SIZE	.064
TYPE & TENSURE	S052-132
HEAT TREAT. SPEC.	2-1-62
DRIVEN	
ELC. DES. APP.	
MECH. DES. APP.	
FINAL APPROVAL	MS-2271
CHECKED	