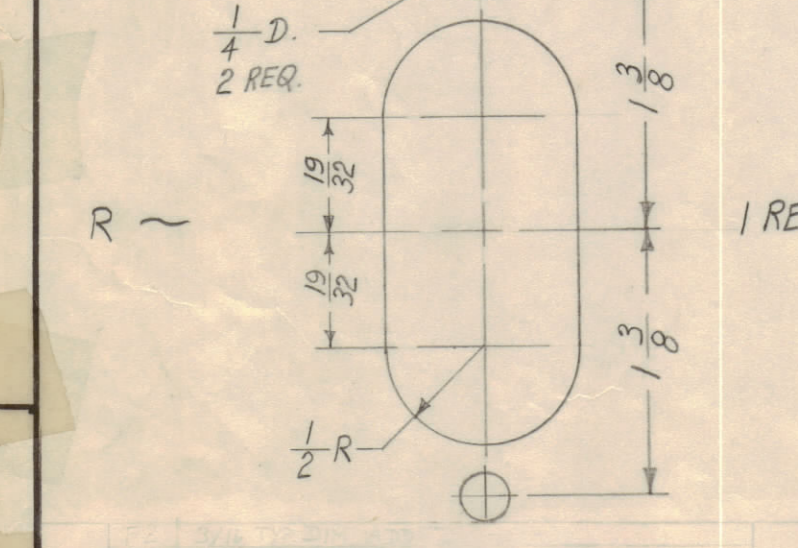
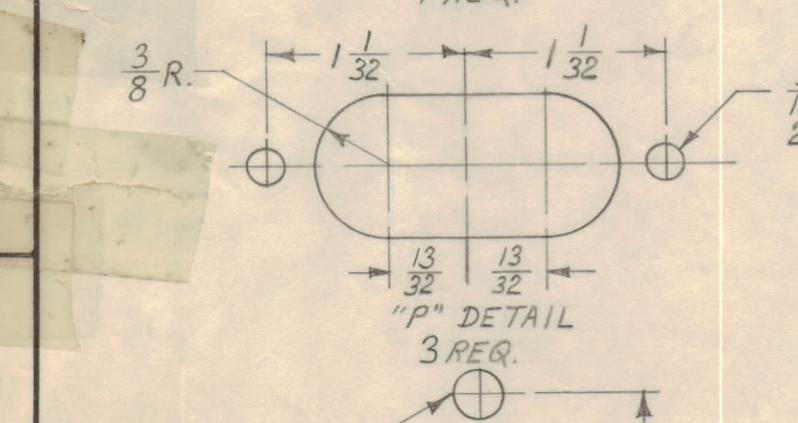
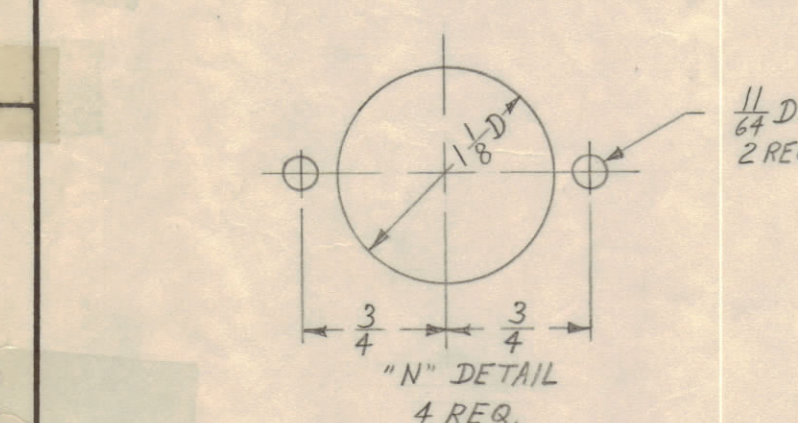
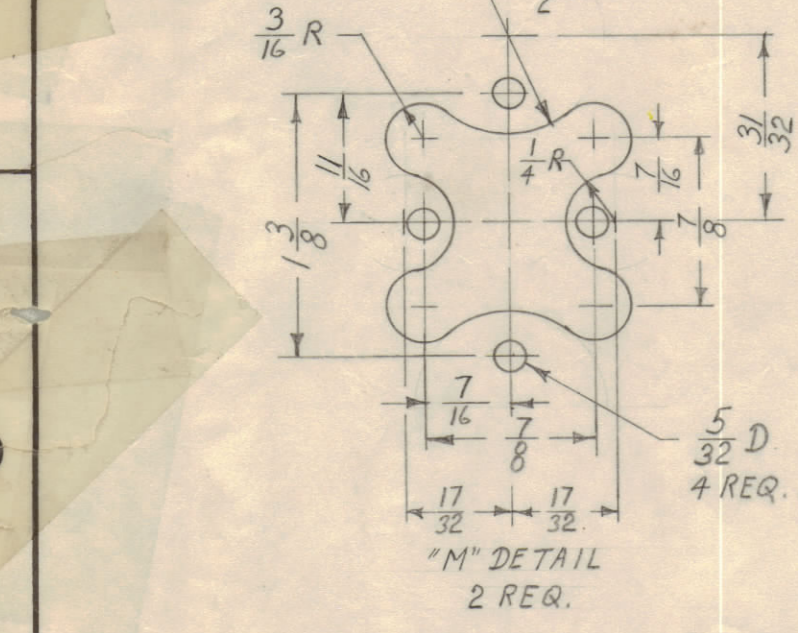
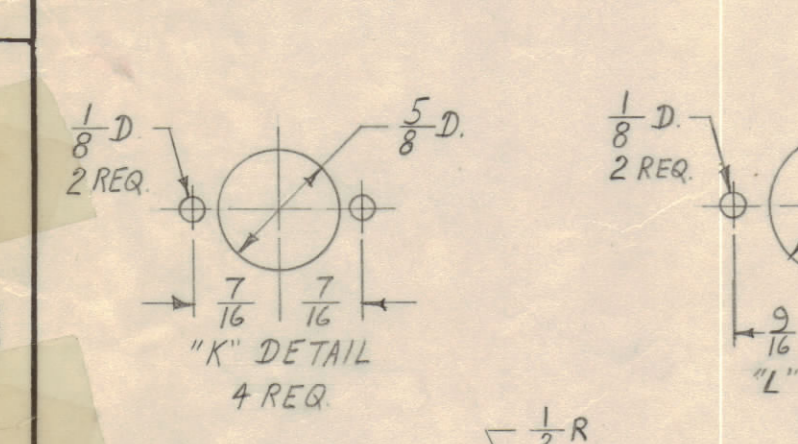
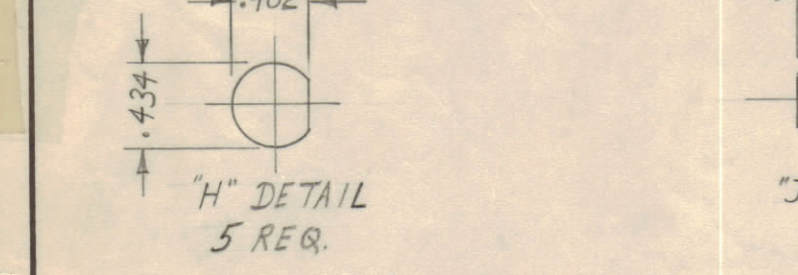


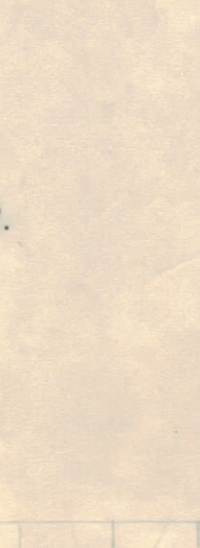
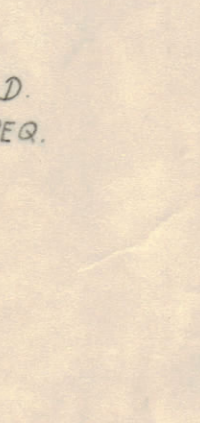
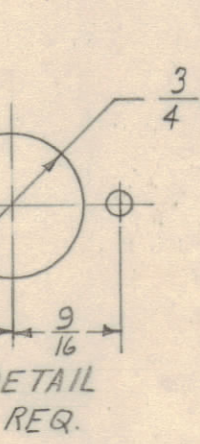
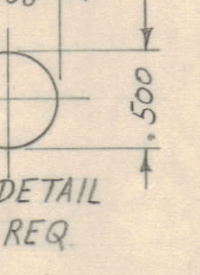
- A - 9/64 (.140) D.
- B - 1/8 (.125) D.
- C - 11/64 (.171) D.
- D - 3/16 (.187) D.
- E - 1/4 (.250) D.
- F - 11/32 x 11/64 + SLOT
- G - 3/8 (.375) D.
- H - SEE DETAIL
- J - SEE DETAIL
- K - SEE DETAIL
- L - SEE DETAIL
- M - SEE DETAIL
- N - SEE DETAIL
- P - SEE DETAIL
- R - SEE DETAIL
- S - 3/4 (.750) D.
- T - 1/2 (.500) D.



ISSUE	ZONE	DESCRIPTION	DATE	CH. NO.	DRAFTS	CHECKER	ENG. APP.
G	856	TOP 110° HOLE DELETED	8-25-64	1218B	MB		
F	C-8	4 x 3/4 DIM. CHANGED TO 1/2 DIM	7-9-63	3487	MB		
F	C-8	CHANGED (4) B HOLES TO C HOLES	7-9-63	3487	MB		

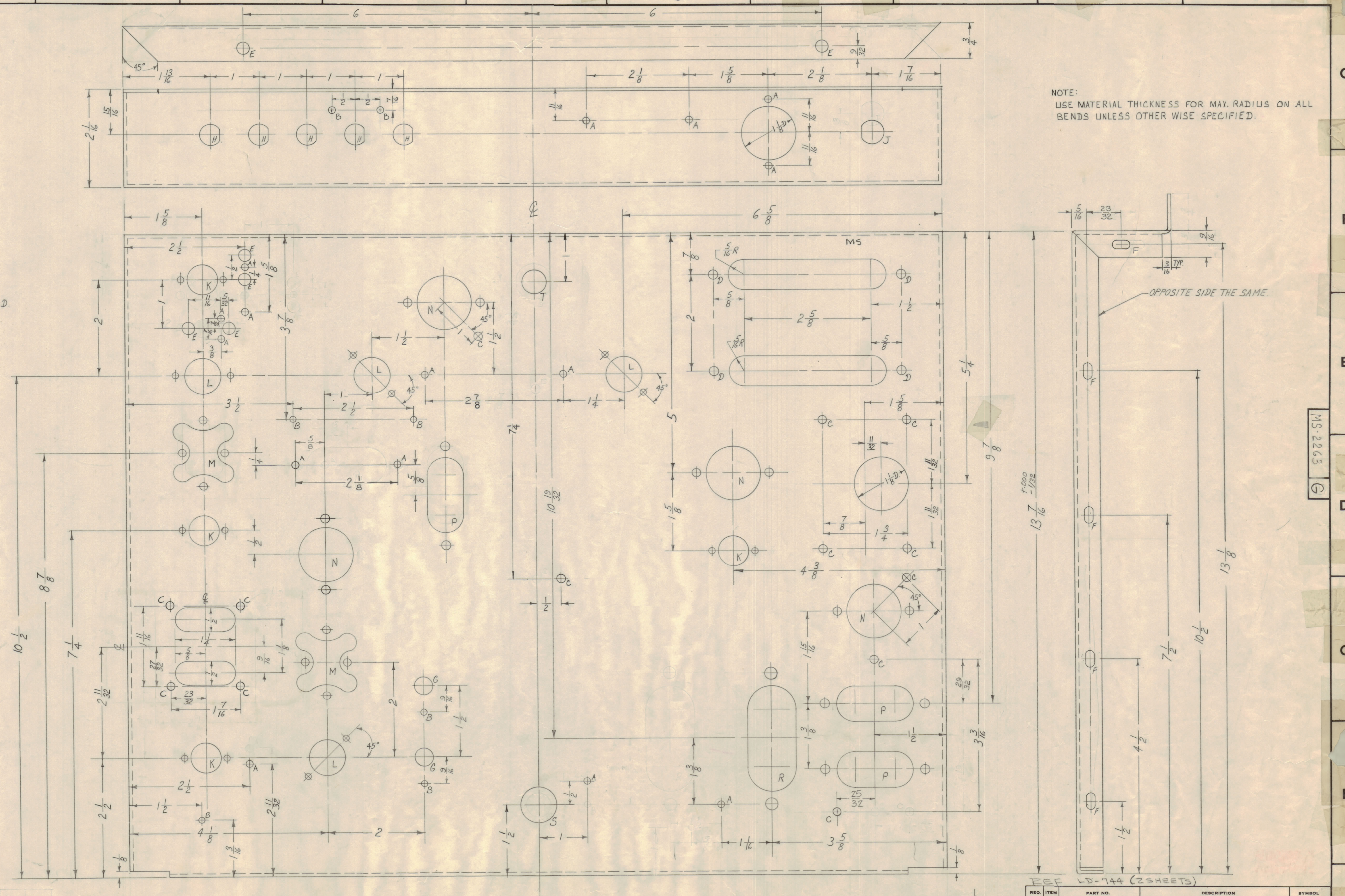
DEC. DIM. ±  
FRAC. DIM. ±  
ANGULAR DIM. ±

- 15 REQ.
- 7 "
- 13 "
- 4 "
- 6 "
- 13 "
- 2 "
- 5 "
- 1 "
- 4 "
- 4 "
- 2 "
- 4 "
- 3 "
- 1 "
- 1 "



TOLERANCES	SCALE
MAXIMUM ALLOWABLE TOLERANCES HAVE BEEN DETERMINED AND ANY DEVIATIONS WILL BE CAUSE FOR REJECTION. REMOVE ALL BURRS AND SHARP EDGES	FULL

FORM-111



NOTE:  
USE MATERIAL THICKNESS FOR MAX. RADIUS ON ALL BENDS UNLESS OTHERWISE SPECIFIED.

REQ. ITEM	PART NO.	DESCRIPTION	SYMBOL
.064		STOCK SIZE	
ALUMINUM		MATERIAL	
5052-H32		TYPE & TEMPER	
		HEAT TREAT. SPEC.	
		FINISH & SPEC. NO.	

MS-2263

SEE LD-744 (23 SHEETS)

OPPOSITE SIDE THE SAME

FORM-111