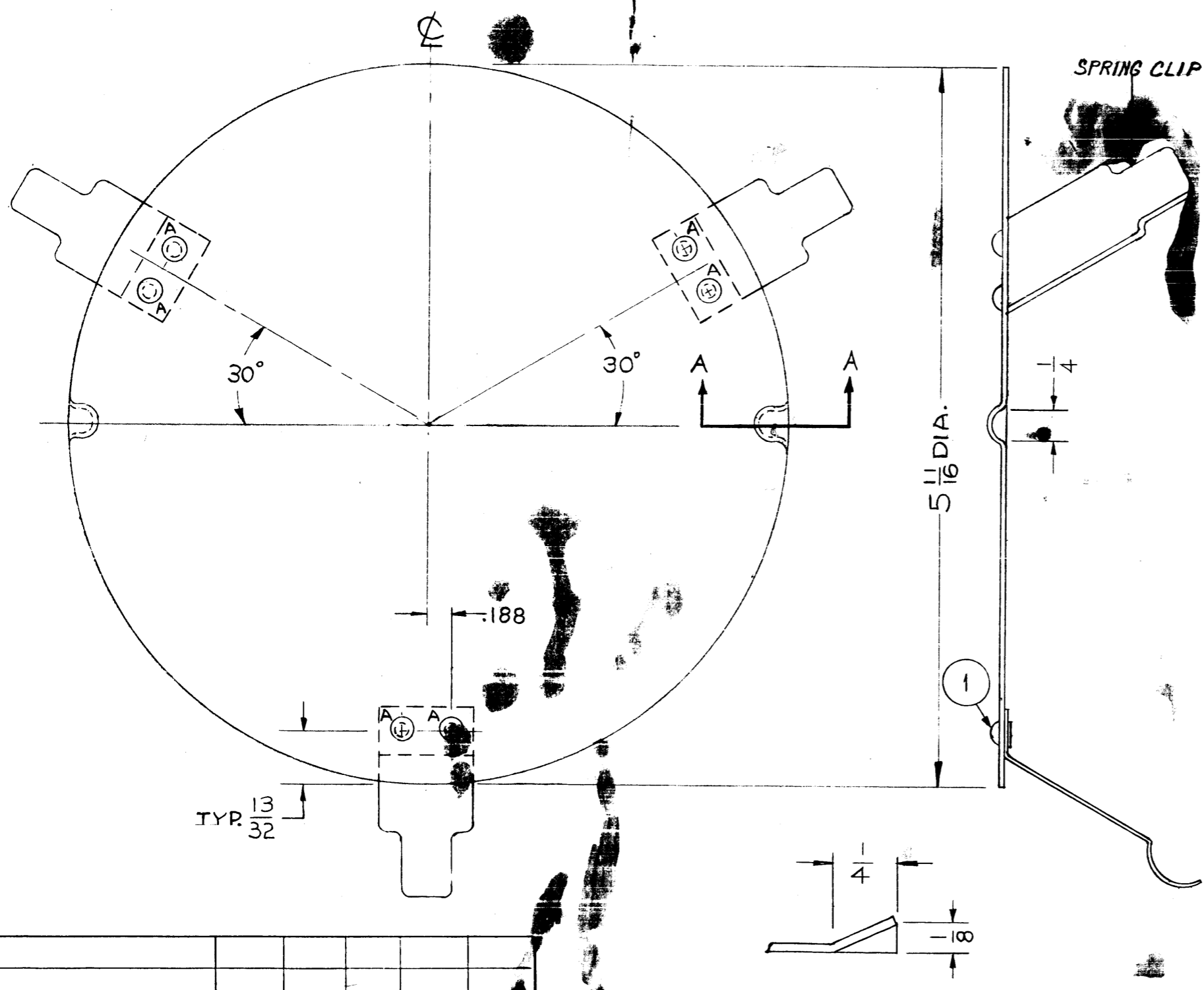


MS-2258 A

TMC PART NO. MS-2258	PRIME OR DIP S114 ZINC CHROM	FINISH S220 TMC RCAF BLUE GRAY SMOOTH ENAMEL	OR PRIME & PAINT PER CUSTOMERS SPEC.
-------------------------	---------------------------------	--	---

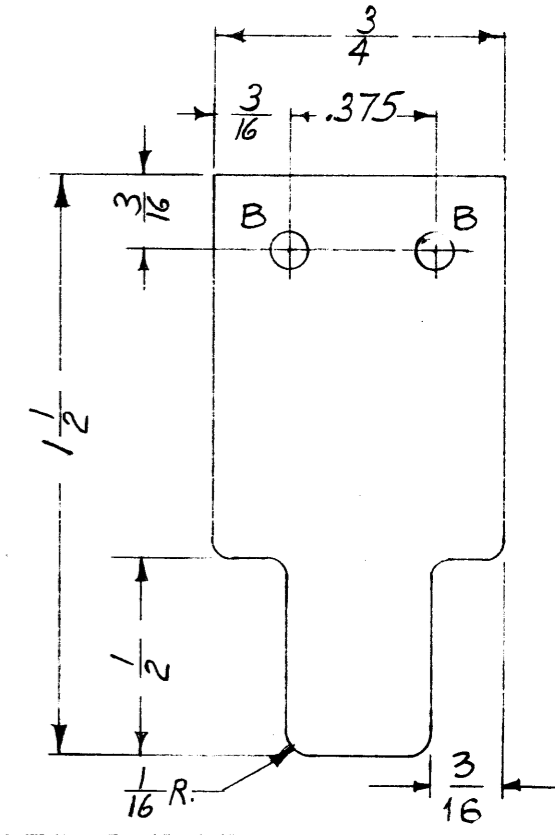
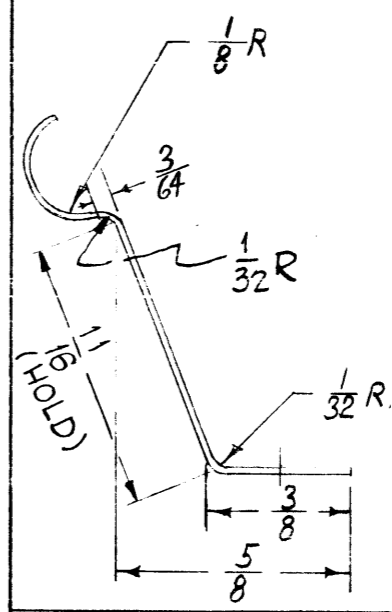
A - .098 DIA. 6REQ.



FORMED PIECE

DEVELOPED PIECE

B - .098 DIA. ~ 2REQ.



SPRING CLIP DETAIL
.018 SPRING STEEL
3 REQ.

SECTION AA
TYP (2) PLACES

ISSUE	ITEM	CHANGED FROM	DATE	CH. NO.	DRAFTS	CHECKED	ENG. APP.
A	2	SPRING CLIP DETAIL REVISED	6-14-60	2447			
	1	FINISH NOTE CLARIFIED					

TOLERANCES		SCALE:		1		GPT-10K	
DEC. DIM. ±	FRAC. DIM. ±	MAXIMUM ALLOWABLE TOLERANCES HAVE BEEN DETERMINED AND DEVIATIONS WILL BE CAUSE FOR REVISION.		1		GPT-40K	
ANGULAR DIM. ±		REMOVE ALL BURRS AND SHARP EDGES		REQ. PER UNIT		MODEL PROJECT NO. ASS'Y. NO. DATE	

6	1	AN430A3-2	RIVET	
REQ. ITEM	PART NO.		DESCRIPTION	SYMBOL
#	20 GAUGE		THE TECHNICAL MATERIEL CORP. MAMARONECK. NEW YORK	
	STEEL		COVER, UNBAL OUTPUT	
	MATERIAL			
	TYPE & TEMPER		HEAT TREAT. SPEC.	DRAWN
	SEE CHART			CHECKED
	FINISH & SPEC. NO.		ELEC. DES. APP.	MECH. DES. APP.
			MS-2258 A	