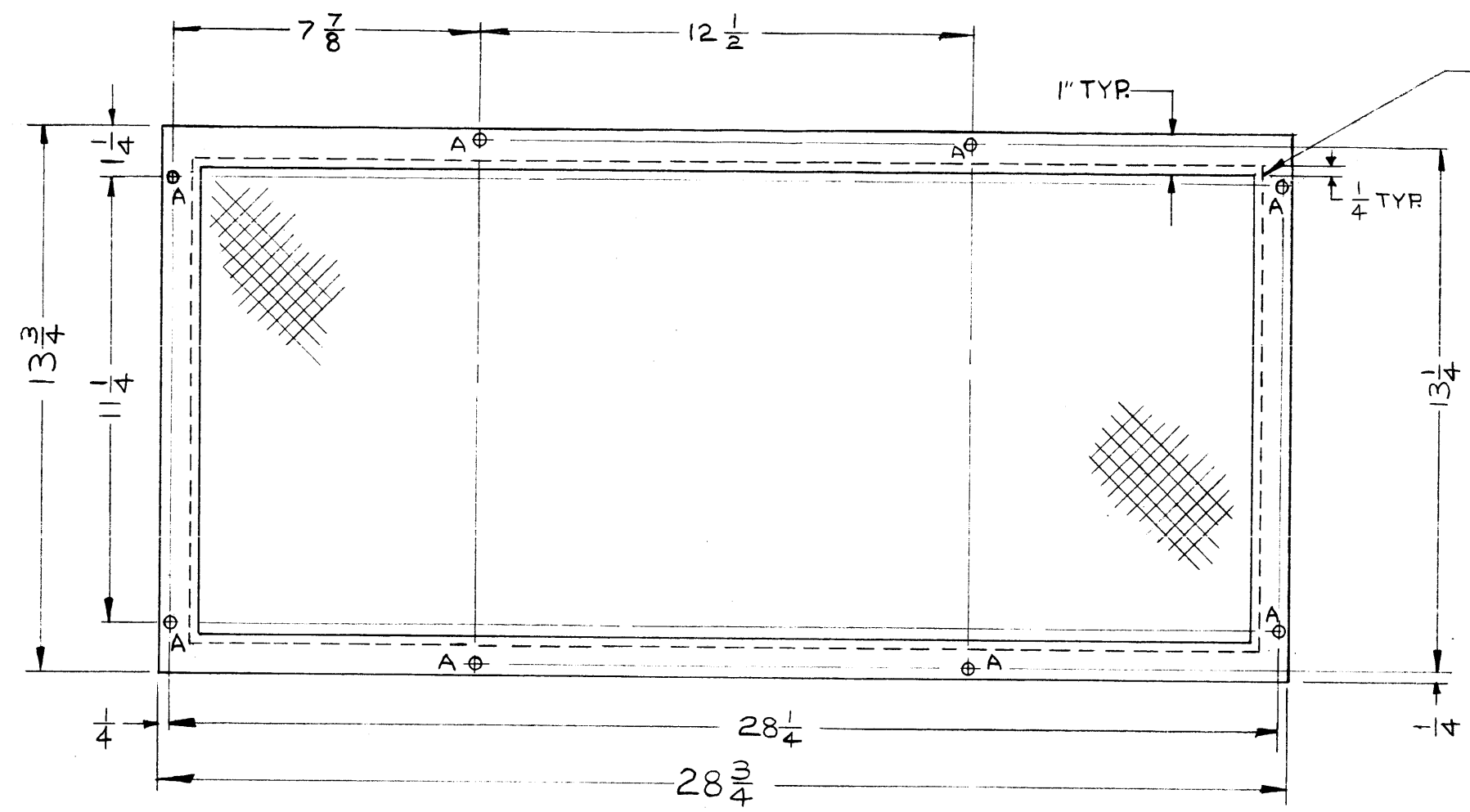
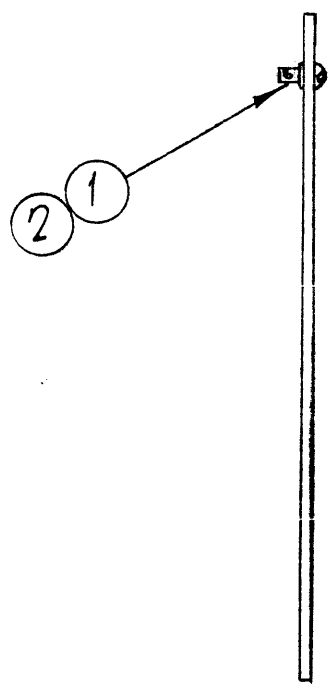


MS-2255 C

TMC P/N	MATL	PRIME *	FINISH *
MS2255	.18 GA. STEEL MILD	5114 ZINC CHROM	5520 BLU-GY TEX.
MS2255-2	.051 ALUM. 5052-H32	5404 IRIDITE 5114 ZINC CHROM	5520 BLU-GY TEX.

* OR PRIME & FINISH PER CUST. SPEC.

8 $\sqrt{1/4}$ (.250 DIA.) HOLES FOR FS-110-1 8 REQ.



FOR MS2255
1/2-16-18 GA. FLATTENED EXPANDED METAL (STEEL)
FOR MS2255-2
1/2-.051 FLATTENED EXPANDED METAL-ALUM

NOTICE TO PERSONS RECEIVING THIS DRAWING

THE TECHNICAL MATERIEL CORPORATION claims proprietary right in the material disclosed hereon. This drawing is issued in confidence for engineering information only and may not be reproduced or used to manufacture anything shown hereon without permission from THE TECHNICAL MATERIEL CORPORATION to the user. This drawing is loaned for mutual assistance and is subject to recall at any time.

Property of:
THE TECHNICAL MATERIEL CORPORATION
MAMARONECK, NEW YORK

NOTE:
HARDWARE TO BE SUPPLIED & ASSEMBLED BY TMC.

ISSUE	ITEM	CHANGED FROM	DATE	CH. NO.	DRAFTS	CHECKER	ENG. APP.
C		ADD. IT. 1, 2 & NOTE	3/21/66	15980	HCA		
B	1	TMC P/N CHT. ADDED	12/1/65	15297	H.V.		
A	1	CHART CLARIFIED	6/13/60	2447	CA		

TOLERANCES		SCALE:	
DEC. DIM. \pm		MAXIMUM ALLOWABLE TOLERANCES HAVE BEEN DETERMINED AND ANY DEVIATIONS WILL BE CAUSE FOR REJECTION.	
FRAC. DIM. \pm 1/64		REMOVE ALL BURRS AND SHARP EDGES	
ANGULAR DIM. \pm			

2	GPT-40K			5-12-60
REQ. PER UNIT	MODEL	PROJECT NO.	ASS'Y. NO.	DATE
USED ON				

8	2	FS110-1	STUD, TURNLOCK	
8	1	FS109-3	RING, RETAINING	
REQ. ITEM	PART NO.		DESCRIPTION	SYMBOL
SEE CHART			THE TECHNICAL MATERIEL CORP.	
STOCK SIZE			MAMARONECK, NEW YORK	
SEE CHART			COVER FILTER	
MATERIAL			PERFORATED	
TYPE & TEMPER		HEAT TREAT. SPEC.	DRAWN	CHECKED
SEE CHART				
FINISH & SPEC. NO.			ELEC. DES. APP.	MECH. DES. APP.
				MS-2255 C