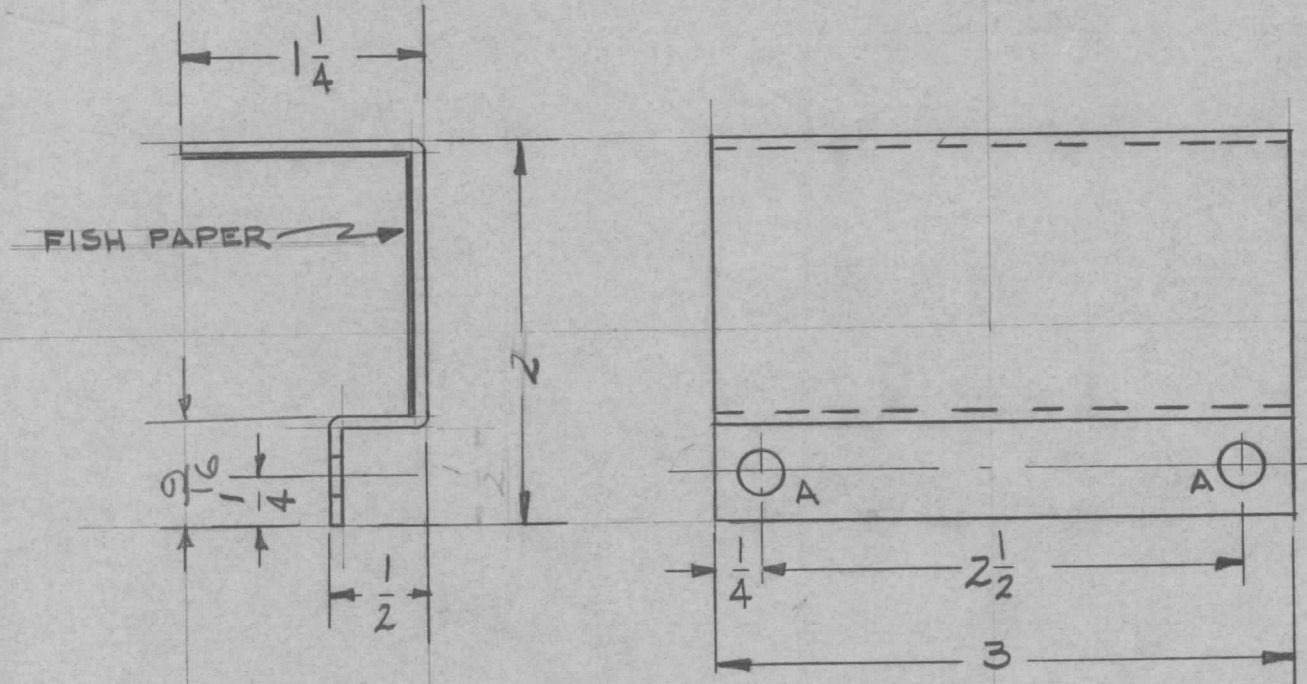
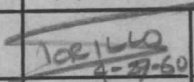
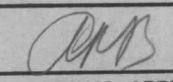


REQ. PER UNIT	USED ON			MS-2232
	MODEL	ASS'Y. NO.	DATE	
2	GPT-40K	AR-116	4-29-60	



A - 15/64 (.234) D. 2 REQ.

ISSUE	ITEM	CHANGED FROM	DATE	CH. NO.	DRAFTS	CHECKER	ENG. APP.	REQ. ITEM	PART NO.	DESCRIPTION	SYMBOL	
								051		THE TECHNICAL MATERIEL CORP.		
								STOCK SIZE		MAMARONECK, NEW YORK		
								ALUMINUM		COVER, INSULATOR		
								MATERIAL		RELAY, FRAME -		
								5052-H32	H-32	 4-29-60		
								TYPE & TEMPER	HEAT TREAT. SPEC.	DRAWN	CHECKED	FINAL APPROVAL
								5-404-YEL. / RIDITE				MS-2232
								FINISH & SPEC. NO.		ELEC. DES. APP	MECH. DES. APP	

TOLERANCES  
 DEC. DIM. ±  
 FRAC. DIM. ± 1/64  
 ANGULAR DIM. ±

SCALE: FULL  
 MAXIMUM ALLOWABLE TOLERANCES HAVE BEEN DETERMINED AND ANY DEVIATIONS WILL BE CAUSE FOR REJECTION.  
 REMOVE ALL BURRS AND SHARP EDGES