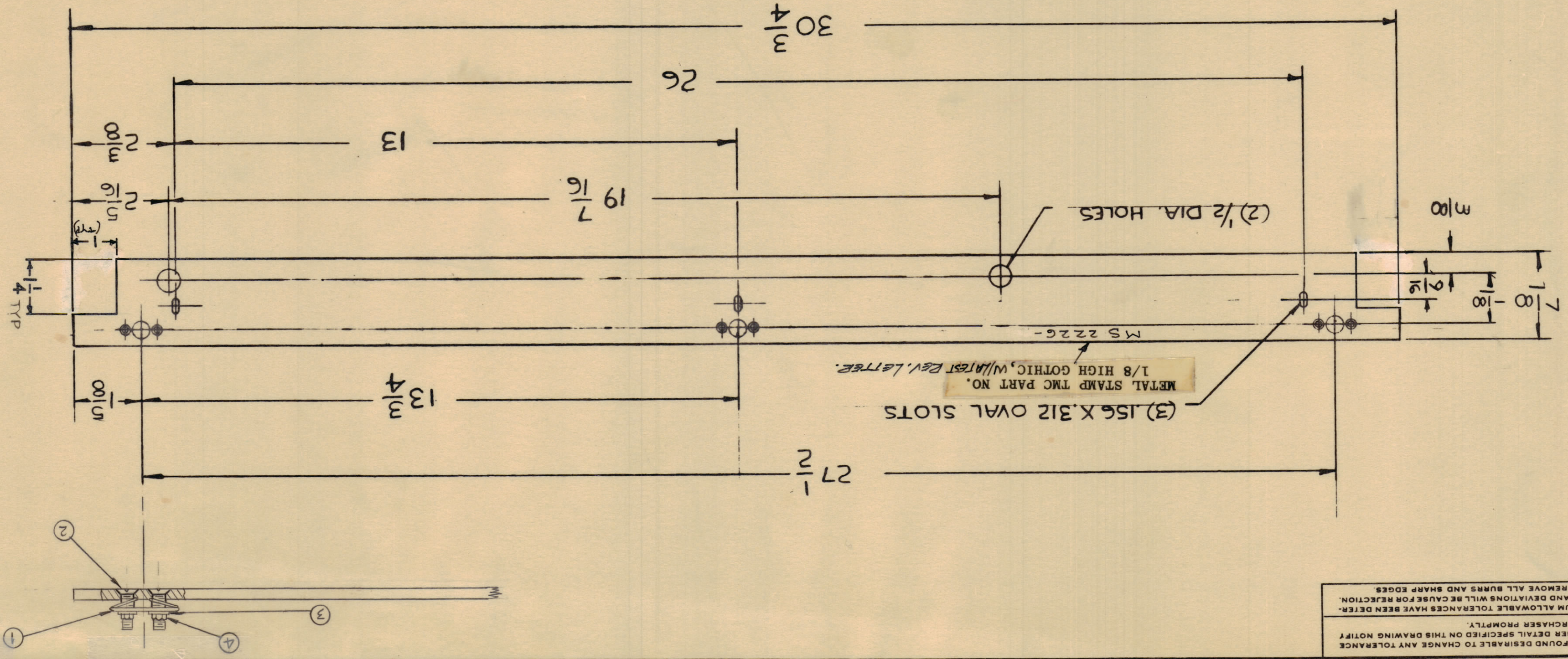


ALL DEC. DIM. ±	ANGULAR DIM. ±	OTHERS
DRILL, PUNCH, COMMERCIAL STOCK SIZES AND MANUFACTURERS TOLERANCES ARE NOT INCLUDED.		
SCALE:		
ISSUE ITEM	CHANGED FROM	DATE
A 1	ITEM 1, 2, 3, 4 ADDED	10/14/60 3197
B 1	NOTCHES & TMC PART NO. ADDED	1/16/61 10301
C 1	17.2 WAS "SCFS0348BN8 3-3/8" 17875 ALU	1/16/61 10301

REQ. PER UNIT	1	6PT-40K	MODEL	AP-102	PROJECT NO.	6-14-60	DATE
USED ON							
FINISH & SPEC. NO. 5404							
HEAT TREAT SPEC.							
TYPE & TEMPER 5052-H32							
MATERIAL ALUMINUM							
STOCK SIZE .125							
THE TECHNICAL MATERIEL CORP. MAMARONECK, NEW YORK							
SYMBOL							
REQ.	ITEM	PART NO.	DESCRIPTION				
4		NTH0348BN6	NUT				
3		LW503MRN	LOCK WASHER				
2		SCFP0348BN8	SCREW				
1		FS-102-1	SPRING TYPE S.C.L.I.P.				

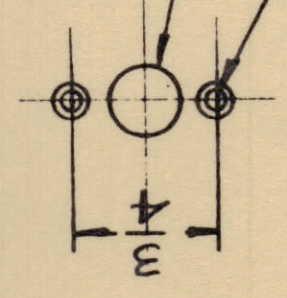
HS 2226
C

MS 2226
C



NOTE:
DIMS. FOR NOTCHES TYPICAL
BOTH ENDS OF STRIP.

TOOL TM-1
CSK 82° X .218 DIA
(2) #32 (.116) DIA HRS
.375 DIA. HL



IF IT IS FOUND DESIRABLE TO CHANGE ANY TOLERANCE OR OTHER DETAIL SPECIFIED ON THIS DRAWING NOTIFY THE PURCHASER PROMPTLY.
MAXIMUM ALLOWABLE TOLERANCES HAVE BEEN DETERMINED AND DEVIATIONS WILL BE CAUSE FOR REJECTION.
REMOVE ALL BURNS AND SHARP EDGES