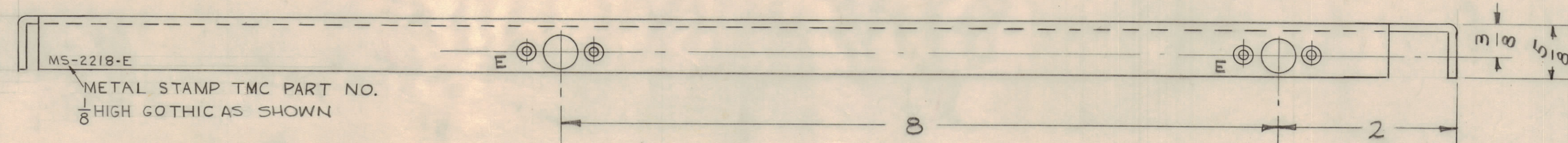
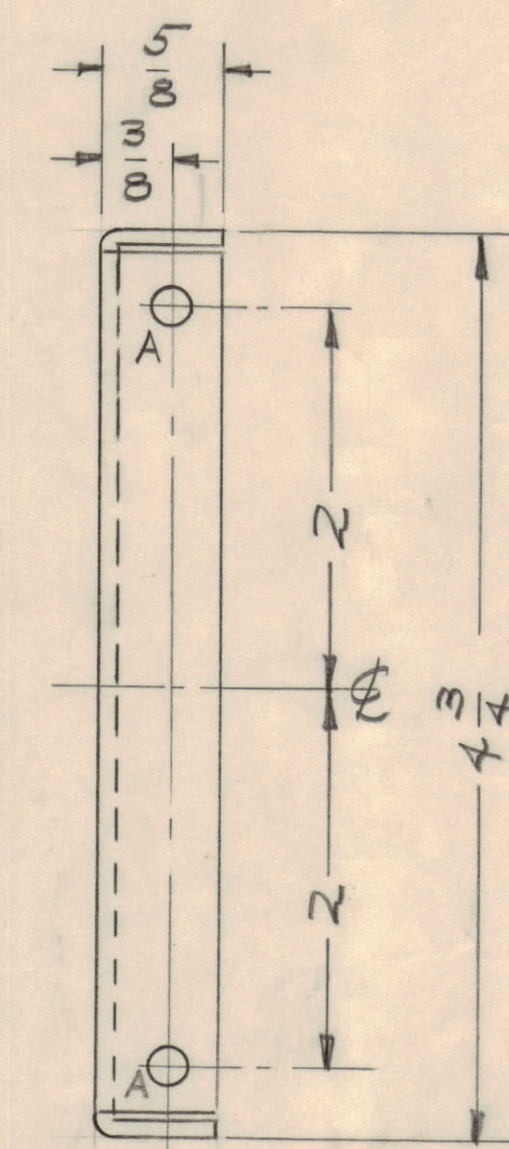
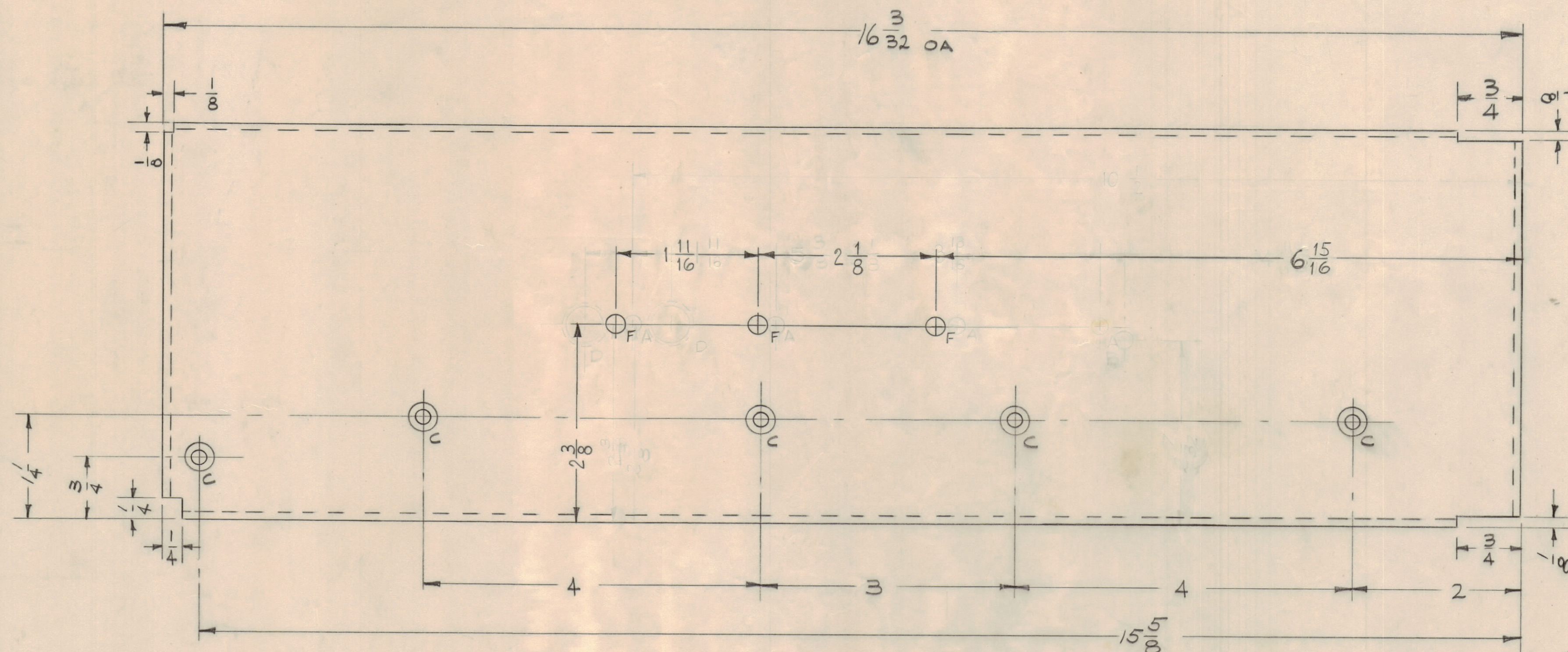
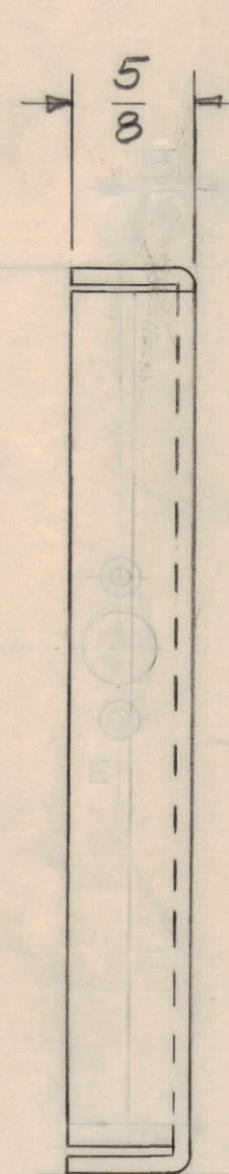
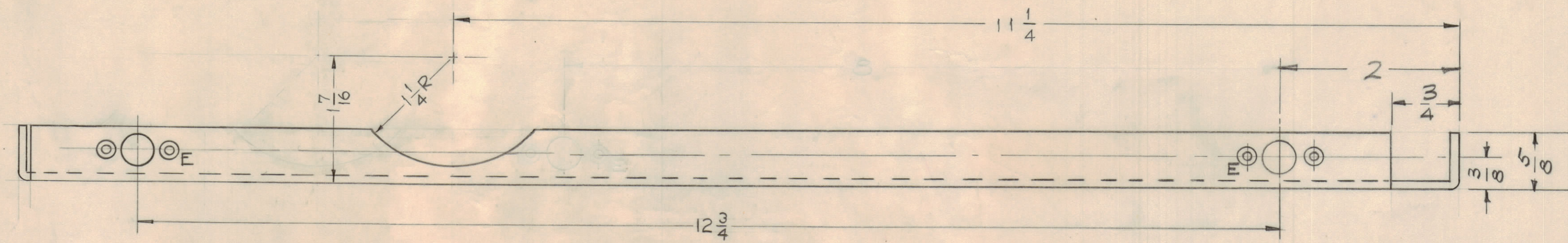


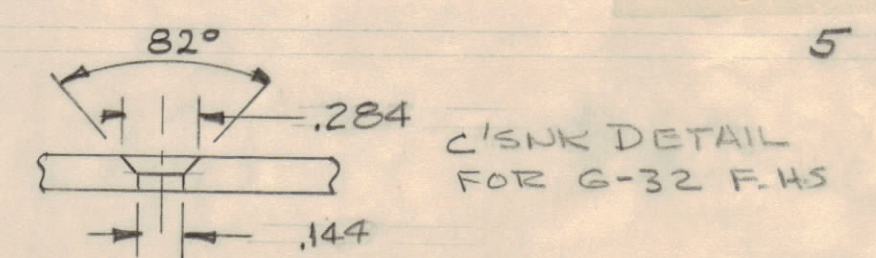
NOTICE TO PERSONS RECEIVING THIS DRAWING
 THE TECHNICAL MATERIEL CORPORATION claims
 proprietary right in the material disclosed herein.
 This drawing is issued in confidence for engineering
 information only and may not be reproduced or used
 to manufacture anything shown hereon without per-
 mission from THE TECHNICAL MATERIEL CORPORA-
 TION to the user. This drawing is loaned for mutual
 assistance and is subject to recall at any time.
 Property of:
 THE TECHNICAL MATERIEL CORPORATION
 MAMARONECK, NEW YORK



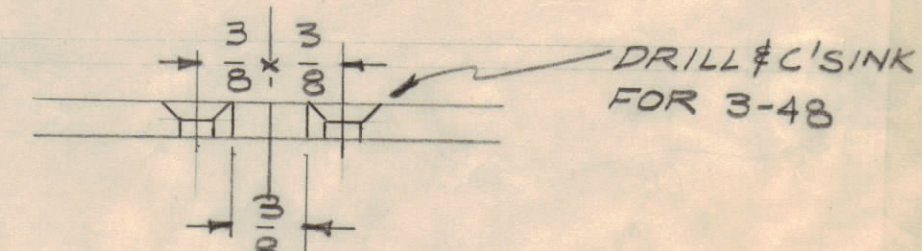
MS-2218-E
 METAL STAMP TMC PART NO.
 1/8 HIGH GOTHIC AS SHOWN

A ~ 13/64 (.203) D. 2 REQ

C ~ 5"



E ~ 4 REQ



F ~ 7/32 DIA. 3 REQ.

ISSUE	ZONE	DESCRIPTION	DATE	CH. NO.	DRAFTS	CHECKER	ENG. APP.
E	10	Detail Deleted	11-7-61	5752	JA		
F	10	Detail Relocated	11-7-61	5752	JA		
D	10	3/4" DIA HOLES ADDED	5-15-61	4881	WOF		
C	10	1/4" DIA HOLES DELETED	2-14-61	4127	RU		
B	10	1/4" DIA HOLES ADDED	12-14-60	3297	DM		
A	10	5/8" DIA WAS 6/8" DIA.	9-7-60		CUS		

TOLERANCES
 DEC. DIM. ±
 FRACTIONAL DIM. ±
 ANGULAR DIM. ±

SCALE: FULL SIZE
 MAXIMUM ALLOWABLE TOLERANCES HAVE BEEN DETERMINED AND ANY DEVIATIONS WILL BE CAUSE FOR REJECTION. REMOVE ALL BURRS AND SHARP EDGES

REQ. PER UNIT	MODEL	SECTION	ASBY. NO.	DATE	FINISH & SPEC. NO.
1	CLL-1			4-13-60	5404 YEL. IRIDITE

REQ. ITEM	PART NO.	DESCRIPTION	SYMBOL
	.064	THE TECHNICAL MATERIEL CORP. MAMARONECK, NEW YORK	
	STOCK SIZE	LEFT SIDE PLATE	
	ALUMINUM		
	MATERIAL		
	5052-H 32		
	TYPE & TEMPER		
	HEAT TREAT. SPEC.		
	FINISH & SPEC. NO.		

MS-2218-E

MS-2218 E