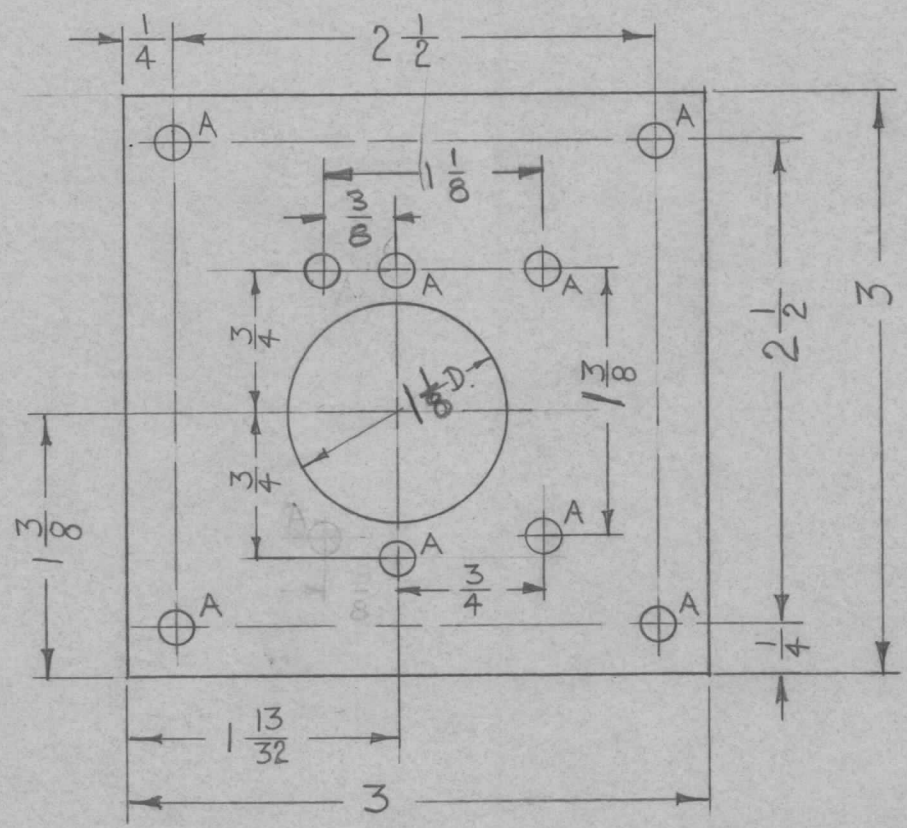


REQ. PER UNIT	USED ON			MS-2204	A
	MODEL	ASS'Y. NO.	DATE		
1	CSS-1		4-25-60		

A-1/64 (.171) D. 9 REQ.



REF: LD-731

UNLESS OTHERWISE SPECIFIED
DIMENSIONS ARE IN INCHES AND INCLUDE
CHEMICALLY APPLIED OR PLATED FINISHES

DECIMALS	TOLERANCES	FRACTIONS
.X ± .05		± 1/64
.XX ± .01		ANGLES
.XXX ± .005		± 0° 30'

CUT HERE
GUARANTEED
2-66

ISSUE	ITEM	CHANGED FROM	DATE	CH. NO.	DRAFTS	CHECKER	ENG. APP.	REQ.	ITEM	PART NO.	DESCRIPTION	SYMBOL	
									.064		THE TECHNICAL MATERIEL CORP.		
									STOCK SIZE		MAMARONECK, NEW YORK		
									ALUMINUM		MOUNTING PLATE		
									MATERIAL		IMC STANDARD		
									5052-H32		<i>[Signature]</i>		
									TYPE & TEMPER	HEAT TREAT. SPEC.	DRAWN	CHECKED	FINAL APPROVAL
									3404 YELL IRIDITE		<i>[Signature]</i>		
									FINISH & SPEC. NO.	ELEC. DES. APP	MECH. DES. APP	MS-2204	A