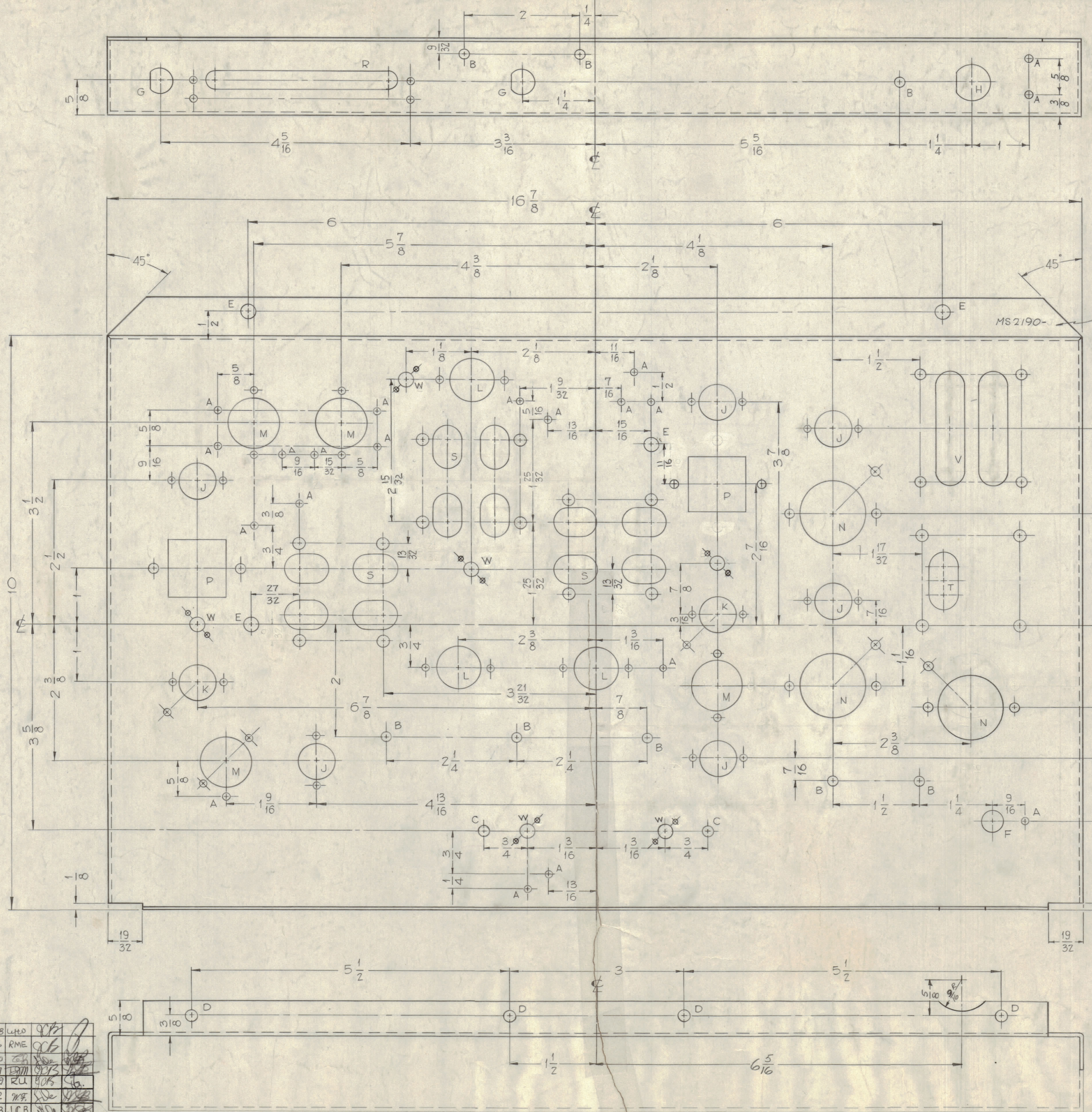
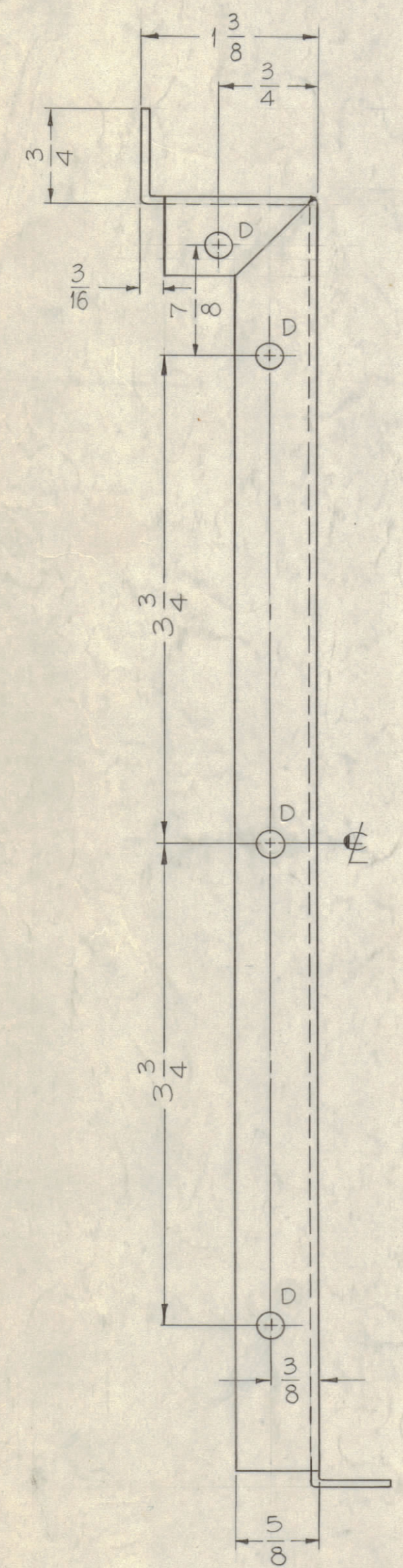


NOTICE TO PERSONS RECEIVING THIS DRAWING

THE TECHNICAL MATERIEL CORPORATION claims proprietary right in the material disclosed herein. This drawing is issued in confidence or engineering information only and may not be reproduced or used to manufacture anything shown hereon without permission from THE TECHNICAL MATERIEL CORPORATION to the user. This drawing is loaned for mutual assistance and is subject to recall at any time.

Property of:
THE TECHNICAL MATERIEL CORPORATION
MAMARONECK, NEW YORK

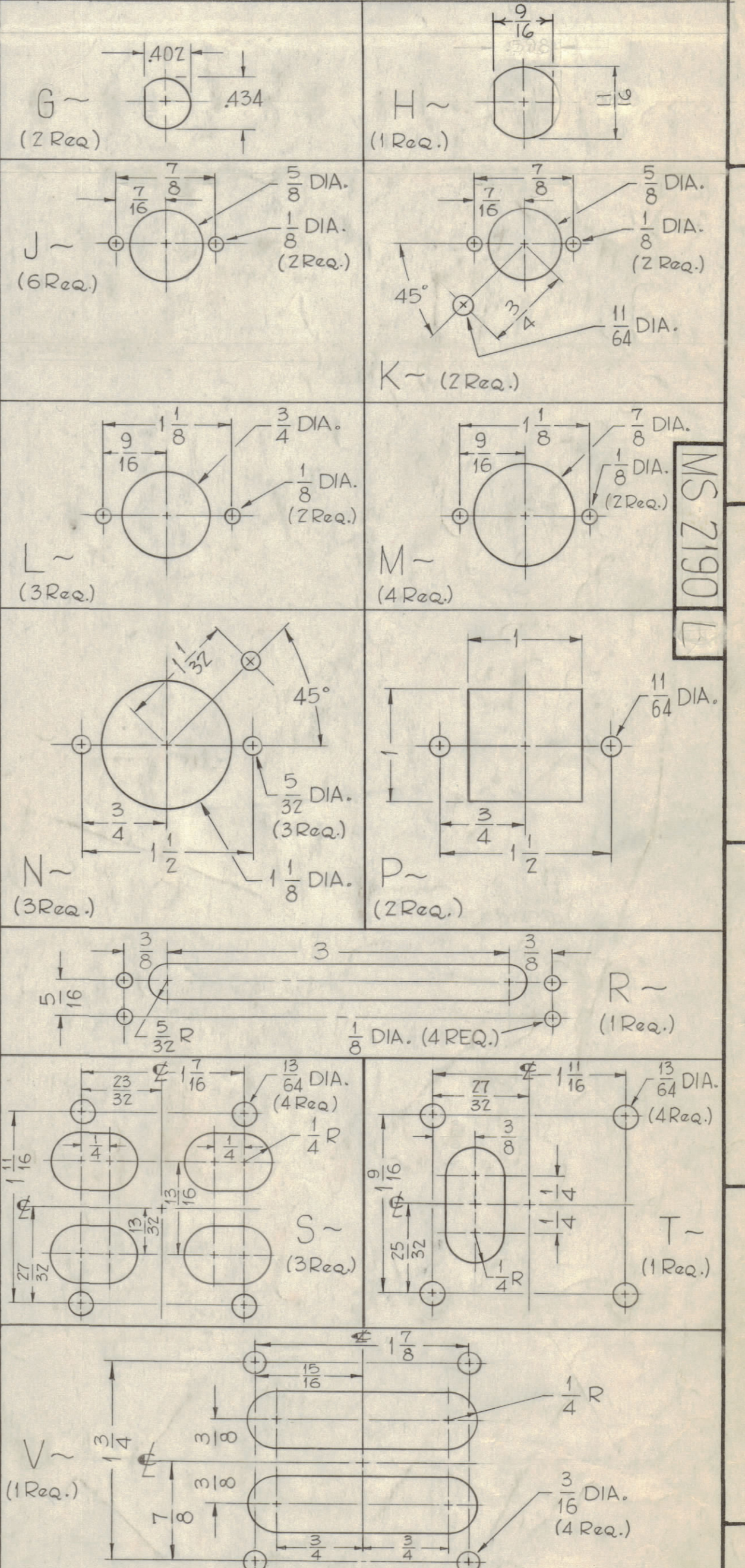
G
F
E
D
C
B
A



MS 2190- METAL STAMP TMC PART NO. 1/8 HIGH, 90° TAP, W/LATEST REV. LETTER.

HOLES -

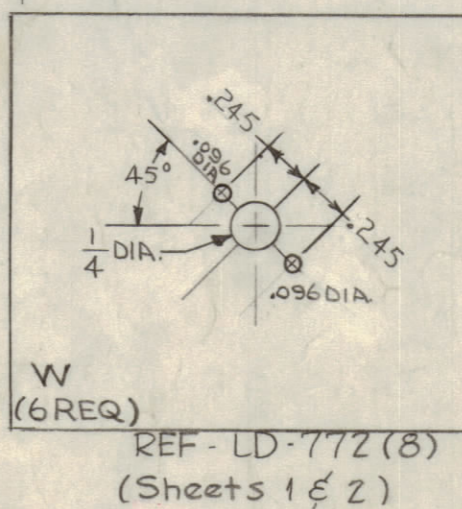
A - 1/8 DIA.	20 Req.
B - 11/64 DIA.	8 Req.
C - 3/16 DIA.	2 Req.
D - 13/64 DIA.	12 Req.
E - 1/4 DIA.	4 Req.
F - 3/8 DIA.	1 Req.



ISSUE NO.	DESCRIPTION	DATE	CH. NO.	DRAFTS	CHECKER	ENGR. APP.
L	DETAIL "H" REVISED	4.6.67	18088	LHD		
K	ADDED "W" DETAIL. QTY "E" HOLES WAS 10, CHGD 6E HOLES TO W, POS OF 1/16" R. CUTOUT ADDED TO BOTTOM VIEW	8.24.66	14776	RME		
J	B4 3/16" R. CUTOUT ADDED TO BOTTOM VIEW	11.27.67	7100			
H	D6.8 Redimensioned (2) "S" Details	3/27/61	4487			
G	C6 Mounting Holes For Detail Relocated	12-27-64	3822	RLU		
F	64 TWO "A" HOLES ADDED	11-10-60	3412	WJF		
E	C4 "N" Hole Relocated	10-26-60	3288	J.C.B.		
D	I Revised + Redrawn for Dimensional Clarity	9-23-60	3079	J.C.B.		

SCALE: FULL, DO NOT SCALE

MAXIMUM ALLOWABLE TOLERANCES HAVE BEEN DETERMINED AND ANY DEVIATIONS WILL BE CAUSE FOR REJECTION. REMOVE ALL BURRS AND SHARP EDGES



REF-LD-772(8) (Sheets 1 & 2)

REQ PER UNIT	MODEL	SECTION	ASSY. NO.	DATE
1	CBE-1			9-23-60

REQ.	ITEM	PART NO.	DESCRIPTION	SYMBOL
		.064 THICK	THE TECHNICAL MATERIEL CORP. MAMARONECK, NEW YORK	
		ALUMINUM	CHASSIS, MAIN (MODEL - CBE-1)	
		5052 - H 32	John C. Biele	
			CHECKED	FINAL APPROVAL
			HEAT-TREAT. SPEC. S404 - IRIDITE	
			FINISH & SPEC. NO.	MS-2190