

NOTICE TO PERSONS RECEIVING THIS DRAWING

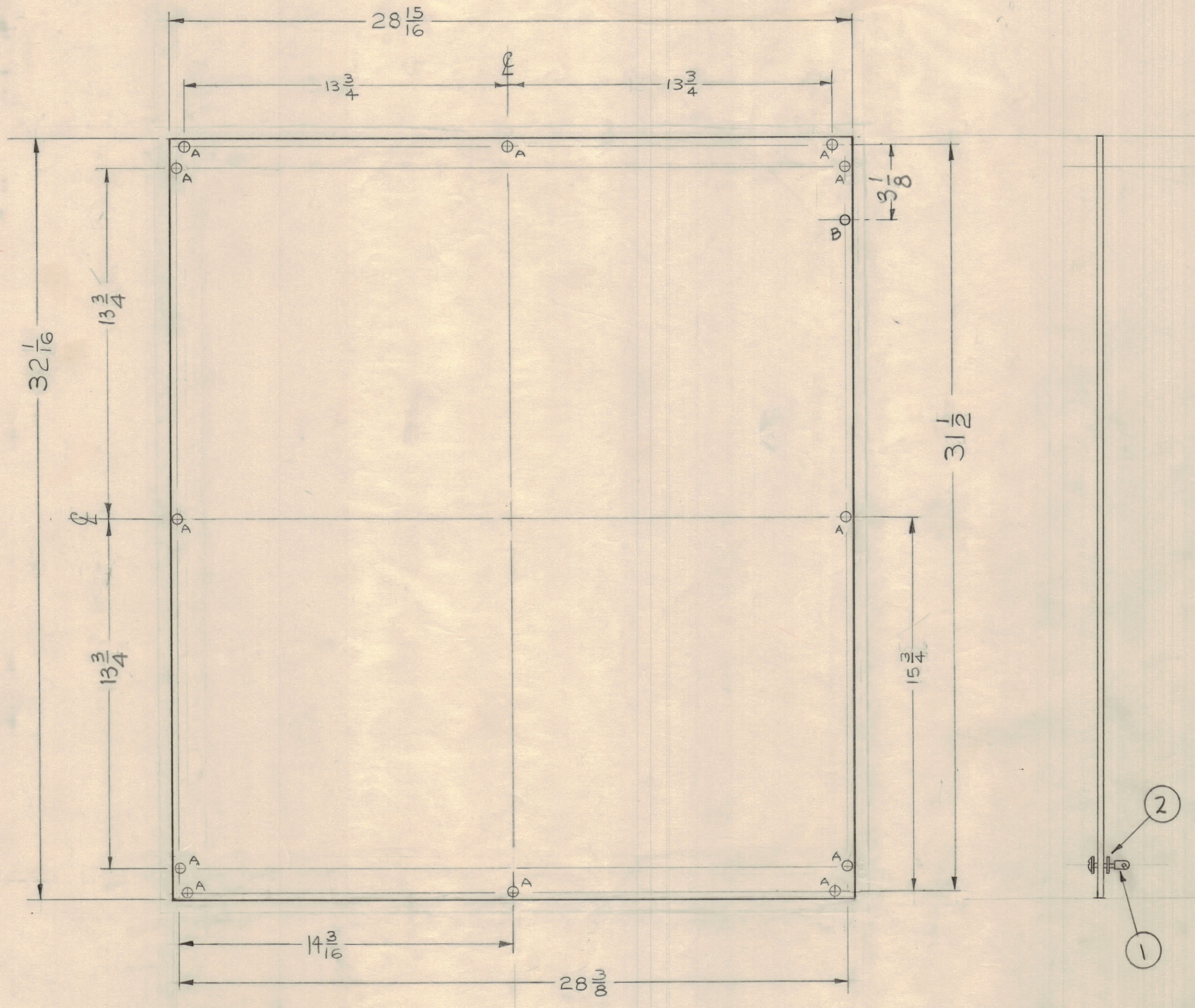
THE TECHNICAL MATERIEL CORPORATION claims proprietary right in the material disclosed hereon. This drawing is issued in confidence for engineering information only and may not be reproduced or used to manufacture anything shown hereon without permission from THE TECHNICAL MATERIEL CORPORATION to the user. This drawing is loaned for mutual assistance and is subject to recall at any time.

Property of:
THE TECHNICAL MATERIEL CORPORATION
MAMARONECK, NEW YORK

MS-2186 D

A ~ 1/4 (250) D.
B ~ 3/8 (.375) D.

12 REQ
1



ISSUE	ZONE	DESCRIPTION	DATE	CH. NO.	DRAFTS	CHECKER	ENG. APP.
D	2	3 1/8 was 2 1/4	6/11/60	24	DM	JSP	ave
D	1	13 3/4 was 14 3/4					
C	B2	ADDED ITEMS 1-2	5-19	2286	RL	JCS	
C	C2	"A" HOLE DIM CH. 1/4 WAS 13/64	60				
C	G3	ADDED "B" HOLE					
B	H5	28-15/16" WAS 30					
B	F6	32-1/16" WAS 33-1/8					
B	B4	28-3/8" WAS 29-1/2"	4/29	22	CY	JHE	
B	B5	14-3/16" WAS 14-3/4"					
B	F3	31-1/2" WAS 32-5/8"	60	21	L	JHE	
B	D3	15-3/4" WAS 16-5/16"					
A	H6	14 3/4" WAS 15"	4-28-60		CS	JHE	
A	H4	13 3/4" WAS 13"					

UNLESS OTHERWISE SPECIFIED
DIMENSIONS ARE IN INCHES AND INCLUDE
CHEMICALLY APPLIED OR PLATED FINISHES

DECIMALS
.X ± .05
.XX ± .01
.XXX ± .005

FRACTIONS
± 1/64
ANGLES
± 0° 30'

TOLERANCES

CUT HERE
GUARANTEED
2-56

REF ~ TMC DWG NO. LD-815 (2)

REQ.	ITEM	PART NO.	DESCRIPTION	SYMBOL
12	2	FS-109	RING, STUD RETAINING	
12	1	FS-110	STUD, SLOTTED HEAD	
.064				
STOCK SIZE				
ALUMINUM				
MATERIAL				
5052-H32				
TYPE & TEMPER				
HEAT TREAT. SPEC.				
S404 YELL IRIDITE				
FINISH & SPEC. NO.				

THE TECHNICAL MATERIEL CORP.
MAMARONECK, NEW YORK

SHIELD, BOTTOM, REAR

PA FRAME

DRAWN: [Signature]
ELEC. DES. APP.: [Signature]
MECH. DES. APP.: [Signature]

CHECKED: [Signature]
FINAL APPROVAL: [Signature]

MS-2186 D

REQ PER UNIT	MODEL	SECTION	ASSY. NO.	DATE
1	GPT-40K	AP-102		4-11-60