

IF IT IS FOUND DESIRABLE TO CHANGE ANY TOLERANCE OR OTHER DETAIL SPECIFIED ON THIS DRAWING NOTIFY THE PURCHASER PROMPTLY.
 MAXIMUM ALLOWABLE TOLERANCES HAVE BEEN DETERMINED AND DEVIATIONS WILL BE CAUSE FOR REJECTION. REMOVE ALL BURRS AND SHARP EDGES

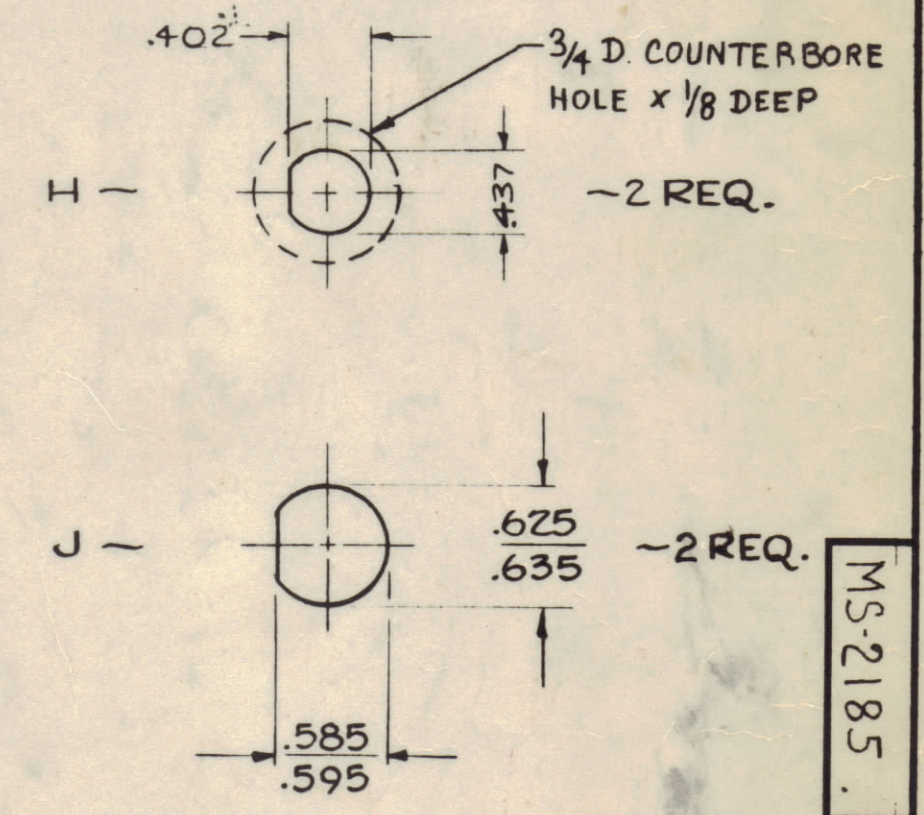
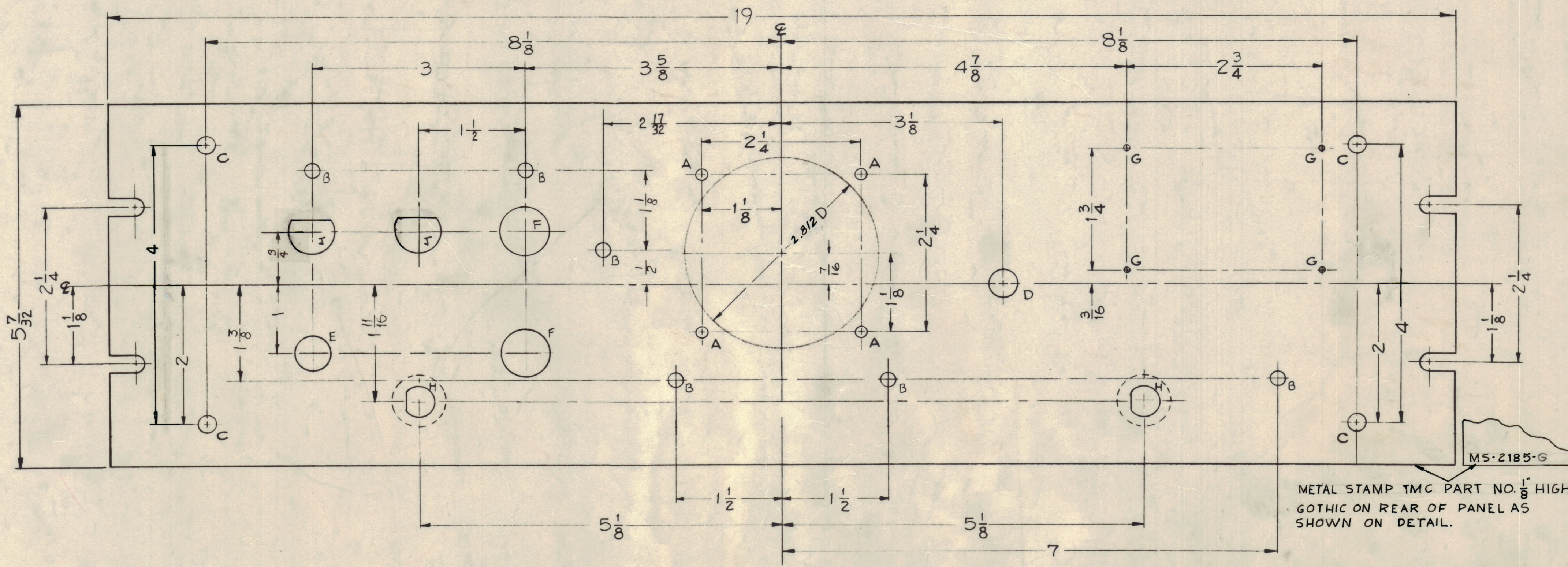
NOTICE TO PERSONS RECEIVING THIS DRAWING

THE TECHNICAL MATERIEL CORPORATION claims proprietary right in the material disclosed hereon. This drawing is issued in confidence for engineering information only and may not be reproduced or used to manufacture anything shown hereon without permission from THE TECHNICAL MATERIEL CORPORATION to the user. This drawing is loaned for mutual assistance and is subject to recall at any time.

Property of:
 THE TECHNICAL MATERIEL CORPORATION
 MAMARONECK, NEW YORK

HOLES ~

- A ~ 5/32 (.156) DIA. 4 REQ.
- B ~ 13/64 (.203) DIA. 6 REQ.
- C ~ 1/4 (.250) DIA. 4 REQ.
- D ~ 13/32 (.406) DIA. 1 REQ.
- E ~ 1/2 (.500) DIA. 1 REQ.
- F ~ 11/16 (.687) DIA. 2 REQ.
- G ~ #47 DRILL (.078) DIA. 4 REQ.



Metal stamp TMC PART NO. 1/8" HIGH
 GOTHIC ON REAR OF PANEL AS SHOWN ON DETAIL.

MACHINING ~

- 1 ~ LATERAL BOW OF PANEL MUST BE KEPT TO .031 TOLERANCE.
- 2 ~ MILL ALL EDGES.
- 3 ~ HOLES MUST BE DRILLED.
- 4 ~ PANEL MUST BE FREE OF ALL MACHINING MARKS, GOUGES, AND SCRATCHES. IF NECESSARY, SAND FRONT OF PANEL WITH NO. 120 GRIT SANDPAPER.

FINISH ~

- S404 YELLOW IRIDITE
- S114 ZINC CHROMATE PRIMER } FRONT & EDGES ONLY.
- S115 TMC SMOOTH GRAY ENAMEL }

| | | | | | | | |
|------------|---------------------------------|------------------------------|-------|---------|--------|---------|-----------|
| H | DIM 2.312 WAS 2.314 (NAME) | 10/26/62 | 15003 | JVV | 10/26 | MM | |
| G | 1 Ref. LD-755 DELETED | 3-6-62 | 6429 | JL | 3-6-62 | JL | |
| F | 1 2" K HOLES 3/16" DELETED | 10/26/62 | 5767 | JL | 10/26 | JL | |
| E | 1 2 HOLES ROTATED 90° | 10-2-61 | 5653 | JL | 10/26 | JL | |
| D | 1 2 HOLES ADDED | 2-8-61 | 4112 | JL | 10/26 | JL | |
| C | 1 2 HOLES WERE 3/32 x 3/16 | 7-16-61 | 2979 | JL | 10/26 | JL | |
| B | 1 1 1/16 WAS 2 1/16 | 8-16-60 | # | JL | 10/26 | JL | |
| A | 1 1/2 WAS 7/16, 1 1/8 WAS 1 1/2 | 4-16-60 | # | JL | 10/26 | JL | |
| ISSUE ITEM | | CHANGED FROM | DATE | CN. NO. | DRAFTS | CHECKER | ENG. APP. |
| TOLERANCES | | SCALE: FULL (DO NOT SCALE) | | | | | |
| ALL | DEC. DIM. ± | DRILL PUNCH COMMERCIAL STOCK | | | | | |
| OTHERS | FRAC. DIM. ± | SIZES AND MANUFACTURERS | | | | | |
| | ANGULAR DIM. | TOLERANCES ARE NOT INCLUDED. | | | | | |

| | | | | |
|--------------------|--|----------------|------------------------------|----------------|
| REQ. ITEM | | PART NO. | DESCRIPTION | SYMBOL |
| 3/16 THICK | | | THE TECHNICAL MATERIEL CORP. | |
| ALUMINUM | | | MAMARONECK, NEW YORK | |
| MATERIAL | | WEIGHT PER PC. | PANEL, FRONT | |
| 2024-T3 | | | CSS-1 | |
| TYPE & TEMPER | | | John C. Biele | |
| HEAT TREAT. SPEC. | | | DRAWN | ELC. DES. APP. |
| SEE NOTES | | | CHECKED | FINAL APPROVAL |
| FINISH & SPEC. NO. | | | | MS-2185 |

| | | | | |
|--------------|--------|-------------|-----------|---------|
| 1 | CSS-1A | | | 1-30-62 |
| 1 | CSS-1 | | | 2-5-60 |
| REQ PER UNIT | MODEL | PROJECT NO. | ASBY. NO. | DATE |
| | | | | USED ON |