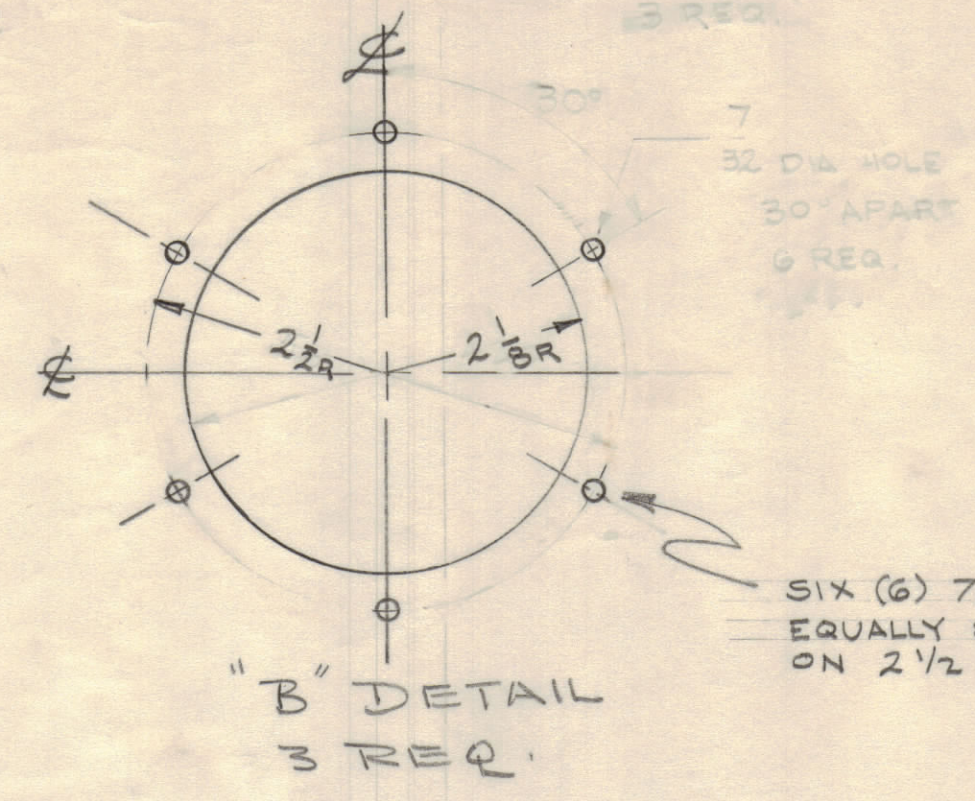
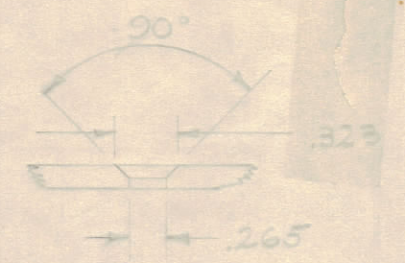
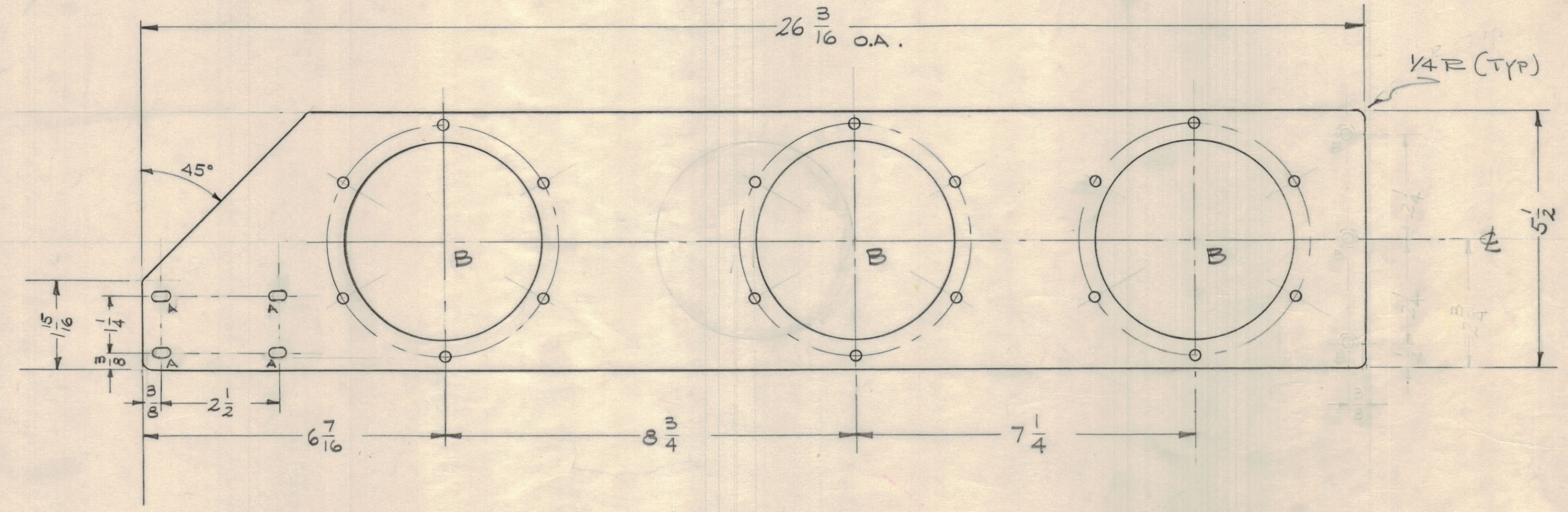


A - 1/32 x 1/16 SLOTS 4 REQ.
 B - SEE DETAIL 3 REQ.



SIX (6) 7/32 D HOLES
 EQUALLY SPACED 60° APART
 ON 2 1/2 RADIUS.

NOTICE TO PERSONS RECEIVING THIS DRAWING
 THE TECHNICAL MATERIEL CORPORATION claims proprietary right in the material disclosed herein. This drawing is issued in confidence for engineering information only and may not be reproduced or used to manufacture anything shown hereon without permission from THE TECHNICAL MATERIEL CORPORATION to the user. This drawing is loaned for mutual assistance and is subject to recall at any time.
 Property of:
 THE TECHNICAL MATERIEL CORPORATION
 MAMARONECK, NEW YORK



NOTE:
 ROUND ALL EDGES

REINSTATE -
 NOW USED ON 2-MC MOD
 REPLACES MS-2483

UNLESS OTHERWISE SPECIFIED
 DIMENSIONS ARE IN INCHES AND INCLUDE
 CHEMICALLY APPLIED OR PLATED FINISHES

| | |
|-------------|-----------|
| DECIMALS | FRACTIONS |
| .X ± .05 | ± 1/64 |
| .XX ± .01 | ANGLES |
| .XXX ± .005 | ± 0° 30' |

TOLERANCES

| ISSUE ZONE | DESCRIPTION | DATE | CH. NO. | DRAFTS | CHECKER | ENG. APP. |
|------------|------------------------------|----------|---------|--------|---------|-----------|
| C 1 | DWG. REINSTATE ADDED | 11/6/61 | 5848 | G.D. | aa | 20 |
| B 1 | DWG. OBSOLETE | 11/29/60 | 3594 | JCB | JB | 20 |
| A 1 | REDRAWN /w/ COMPLETE REDRAWN | 6/21/60 | + | JCB | JB | 20 |

SCALE: DO NOT SCALE

DEC. DIM. ±
 FRAC. DIM. ±
 ANGULAR DIM. ±

1/64

MAXIMUM ALLOWABLE TOLERANCES HAVE BEEN DETERMINED AND ANY DEVIATIONS WILL BE CAUSE FOR REJECTION.
 REMOVE ALL BURRS AND SHARP EDGES

| REQ PER UNIT | MODEL | SECTION | ASSY. NO. | DATE |
|--------------|---------|---------|-----------|---------|
| 1 | GPT-40K | AX-209 | | 6-14-60 |

| REQ. ITEM | PART NO. | DESCRIPTION | SYMBOL |
|-----------|-----------|--|-----------------|
| 1/8 | | THE TECHNICAL MATERIEL CORP. MAMARONECK, NEW YORK | |
| | ALUMINUM | PLATE, VAR. CAPACITOR, | |
| | 6052-H-32 | TRIPLE | |
| | | DRAWN | ELEC. DES. APP. |
| | | CHECKED | FINAL APPROVAL |
| | | | MS-2169 C |