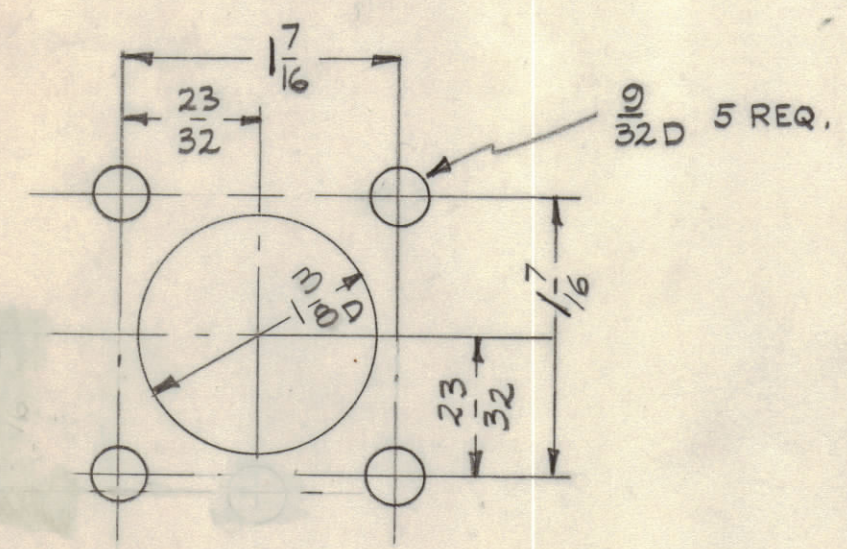


NOTICE TO PERSONS RECEIVING THIS DRAWING
 THE TECHNICAL MATERIEL CORPORATION claims proprietary right in the material disclosed herein. This drawing is issued in confidence for engineering information only and may not be reproduced or used to manufacture anything shown hereon without permission from THE TECHNICAL MATERIEL CORPORATION to the user. This drawing is loaned for mutual assistance and is subject to recall at any time.

Property of:
 THE TECHNICAL MATERIEL CORPORATION
 MAMARONECK, NEW YORK

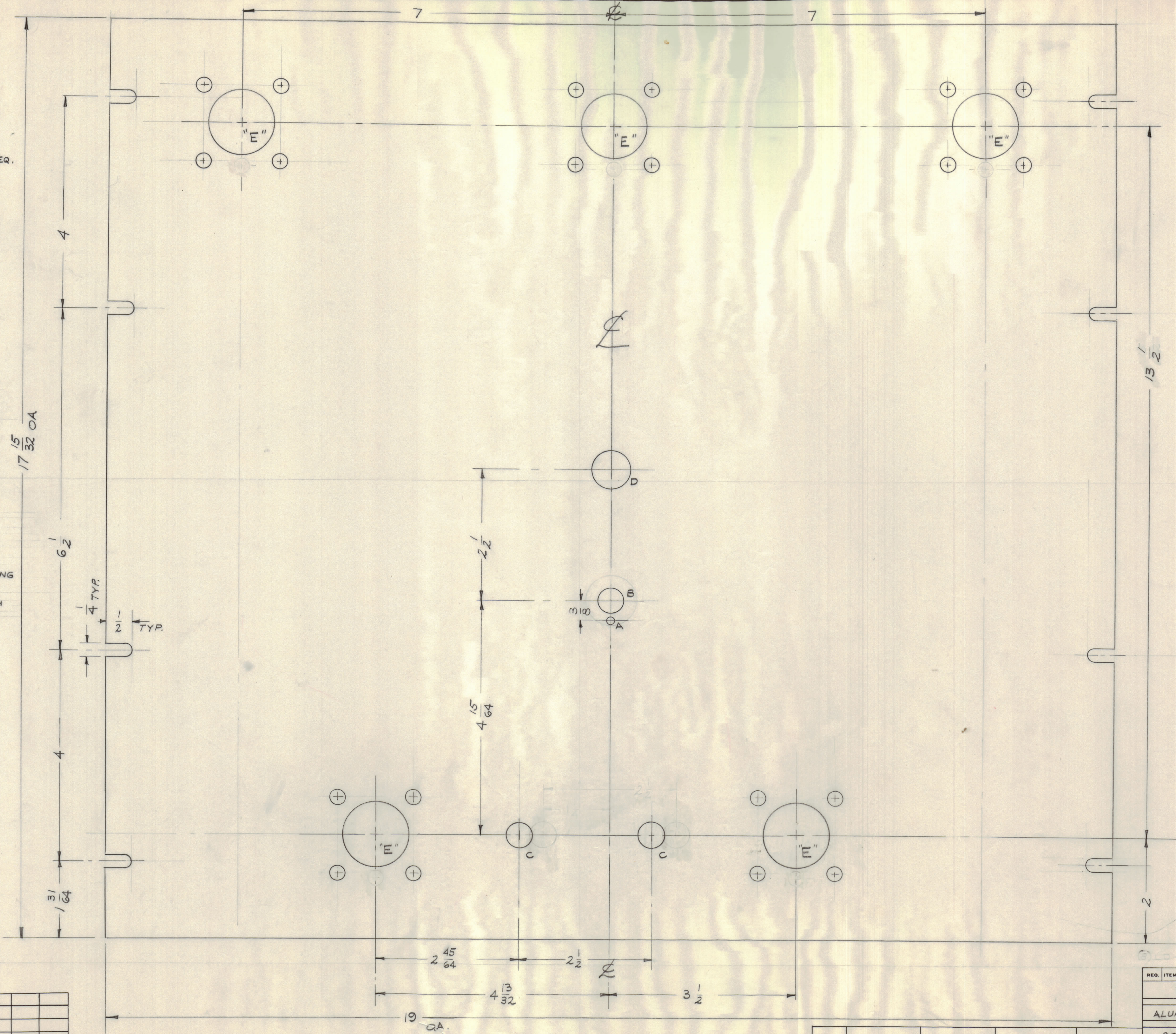
- A - #29 DRILL (.136^{±.004}) D. 1
- B - 31/64 (.484) D. 1
- C - .503 DIA. 2
- D - 23/32 (.718) D. 1



"E"
 5~ REQ.

- 1- S-404 ~ YELLOW IRIDITE
- 2- S-114 ~ ZINC CHROMATE PRIMER
- 3- S-115 ~ TMC SMOOTH GREY ENAMEL OR PAINT TO CUST. SPEC.
- 2-3 - FRONT & EDGES ONLY

- MACHINING
- 1- LATERAL BOW OF PANEL MUST BE KEPT TO .031 TOLERANCE.
 - 2- MILL ALL EDGES.
 - 3- HOLES MUST BE DRILLED.
 - 4- PANEL MUST BE FREE OF ALL MACHINING MARKS GOUGES, AND SCRATCHES. IF NECESSARY, SAND FRONT WITH NO. 120 GRIT SANDPAPER.



ISSUE	ZONE	DESCRIPTION	DATE	CH. NO.	DRAFTS	CHECKER	ENG. APP.

TOLERANCES: SCALE: FULL

DEC. DIM. ± 1/64
 FRAC. DIM. ±
 ANGULAR DIM. ±

MAXIMUM ALLOWABLE TOLERANCES HAVE BEEN DETERMINED AND ANY DEVIATIONS WILL BE CAUSE FOR REJECTION. REMOVE ALL BURRS AND SHARP EDGES

REQ. PER UNIT	MODEL	SECTION	ASBY. NO.	DATE
1	QDP-7SP5-1	LD-758 ENGR		7/29/60
1	QDP-7SP5	LD-718 ENGR		3-29-60

REQ. ITEM	PART NO.	DESCRIPTION	SYMBOL
	3/16	STOCK SIZE	
	ALUMINUM	MATERIAL	
	2024-T3	TYPE & TEMPER	
		HEAT TREAT. SPEC.	
		SEE NOTE	
		FINISH & SPEC. NO.	MS-2160

MS-2160