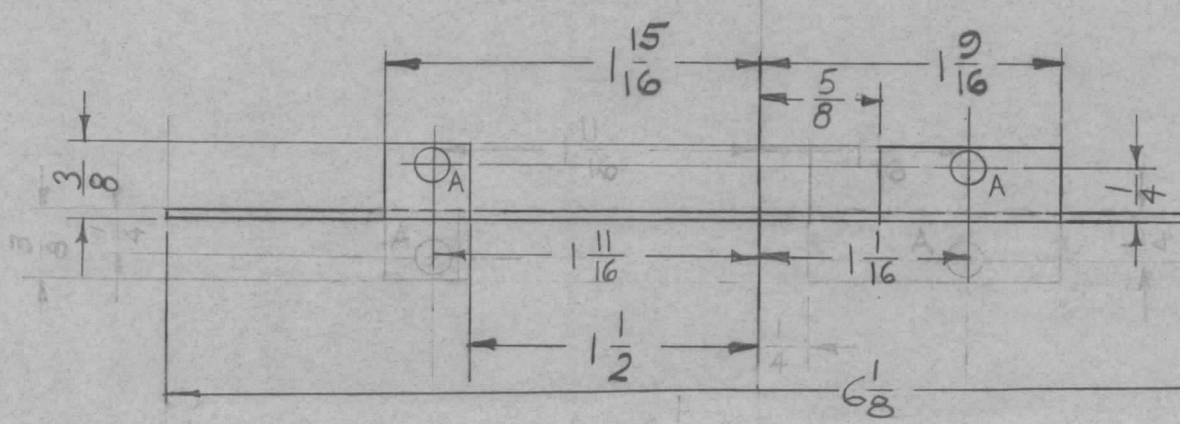
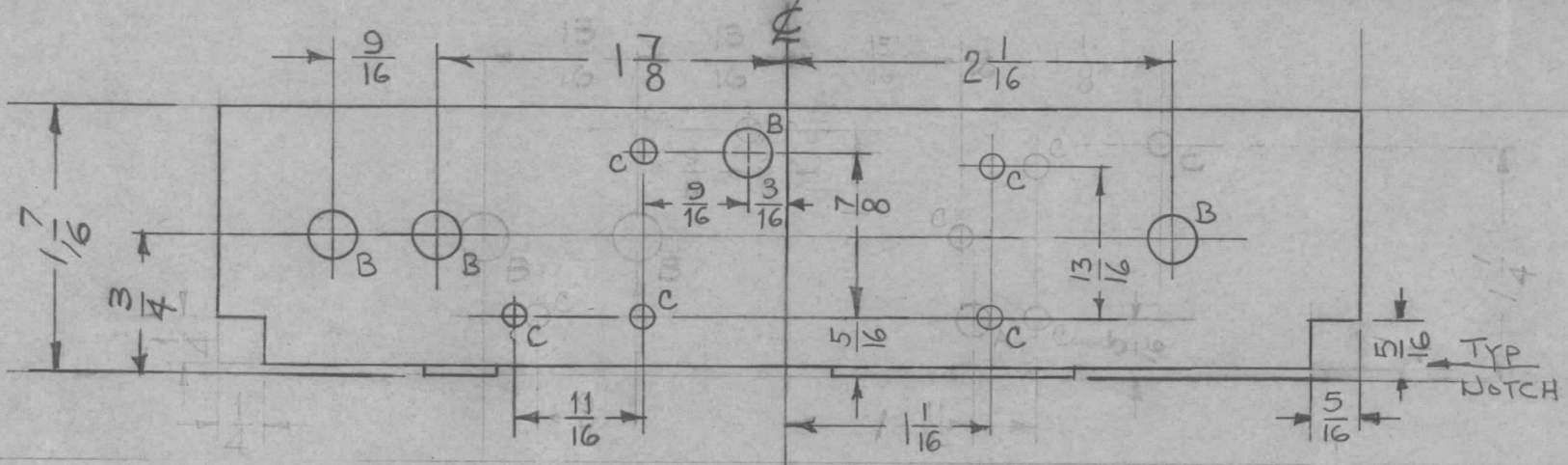


REQ. PER UNIT	USED ON			MS-2150	E
	MODEL	ASS'Y. NO.	DATE		
1	CMO-12		3-22-60		



- A ~ 11/64 (.171) D 2
- B ~ 1/4 (.25) D 4
- C ~ 1/8 (.125) D 5

E	1	NOTCHES WERE 1/4 X 1/4	2-16-66	15780	MRB	JCS	
D	1	(1) "C" HOLE RELOCATED	5-8-61	4827	MLF	JCS	
	3	ONE "B" HOLE ADDED					
C	2	ONE "C" HOLE DELETED	12-14-60	3727	MLF	JCS	
	1	7/8 DIM. WAS 1"					
B	1	1/4" CUTOUT ADDED	10/4/60	3130	DM	JCS	
A	3	ONE "C" HOLE DELETED	5-23-60	2318		JCS	
	2	LIPS REVERSED					
	1	1 1/16 WAS 1 1/32					
ISSUE	ITEM	CHANGED FROM	DATE	CH. NO.	DRAFTS	CHECKER	ENG. APP.
TOLERANCES			SCALE: FULL				
DEC. DIM. ±			MAXIMUM ALLOWABLE TOLERANCES HAVE BEEN DETERMINED AND ANY DEVIATIONS WILL BE CAUSE FOR REJECTION: REMOVE ALL BURRS AND SHARP EDGES				
FRAC. DIM. ±							
ANGULAR DIM. ±							

REF: LD-819-(1)

REQ.	ITEM	PART NO.	DESCRIPTION	SYMBOL
			THE TECHNICAL MATERIEL CORP.	
			MAMARONECK, NEW YORK	
			SHIELD - 3	
.051		MATERIAL		
STOCK SIZE		5052-H32		
ALUMINUM		432		
MATERIAL		5052-H32		
TYPE & TEMPER		6061-T6		
HEAT TREAT. SPEC.		H19		
FINISH & SPEC. NO.		S404 YEL. IRIDITE		
ELEC. DES. APP		MECH. DES. APP		
		DRAWN		
		CHECKED		
		FINAL APPROVAL		
		MS-2150		
		E		