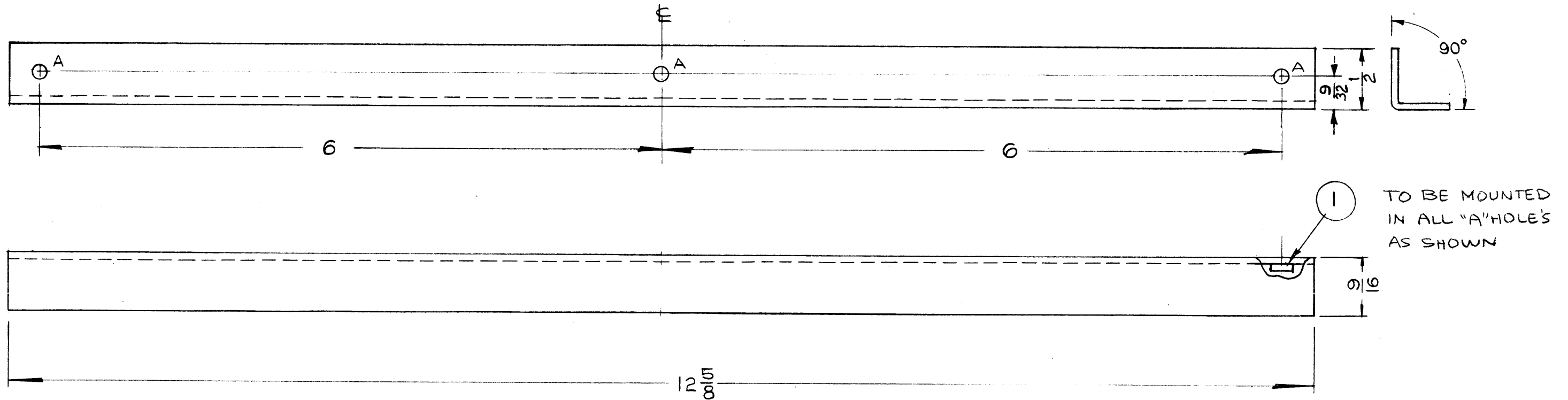


A ~ .161 DIA. (HT-129-440-4) 3 REQ.



NOTICE TO PERSONS RECEIVING THIS DRAWING

THE TECHNICAL MATERIEL CORPORATION claims proprietary right in the material disclosed hereon. This drawing is issued in confidence for engineering information only and may not be reproduced or used to manufacture anything shown hereon without permission from THE TECHNICAL MATERIEL CORPORATION to the user. This drawing is loaned for mutual assistance and is subject to recall at any time.

Property of:
THE TECHNICAL MATERIEL CORPORATION
MAMARONECK, NEW YORK

ISSUE	ITEM	CHANGED FROM	DATE	CH. NO.	DRAFTS	CHECKER	ENG. APP.
C	2	9/32 DIM. ADDED WAS 9	3-1-61	A237	MAF	JCS	JCS
B	1	1/2" DIM WAS 9/16 "A" HOLES WERE 1/8" DIA (ITEM 1 ADDED)	9-23-60	3072	CS	JCS	JCS
A		CMO-1, QUAN WAS 1	8/3/60	2702	RU	JCS	JCS

TOLERANCES		SCALE:
DEC. DIM. ±		MAXIMUM ALLOWABLE TOLERANCES HAVE BEEN DETERMINED AND ANY DEVIATIONS WILL BE CAUSE FOR REJECTION. REMOVE ALL BURRS AND SHARP EDGES
FRAC. DIM. ± 1/64		
ANGULAR DIM. ±		

1	CMO-2				
1	CMO-1,			3/9/60	
REQ. PER UNIT	MODEL	PROJECT NO.	ASS'Y. NO.	DATE	
USED ON					

3	1	NT-129-440-4	NUT, SWAGE		
REQ. ITEM	PART NO.		DESCRIPTION		SYMBOL
	.064		THE TECHNICAL MATERIEL CORP.		
	STOCK SIZE		MAMARONECK, NEW YORK		
	ALUMINUM		TRACK, RIGHT		
	MATERIAL		BOTTOM		
	52S H32	#	CS	JCS	JCS
	TYPE & TEMPER	HEAT TREAT. SPEC.	DRAWN	CHECKED	FINAL APPROVAL
	S404 YELLOW IRDITE		JCS	JCS	MS-2138 C
	FINISH & SPEC. NO.		ELEC. DES. APP.	MECH. DES. APP.	