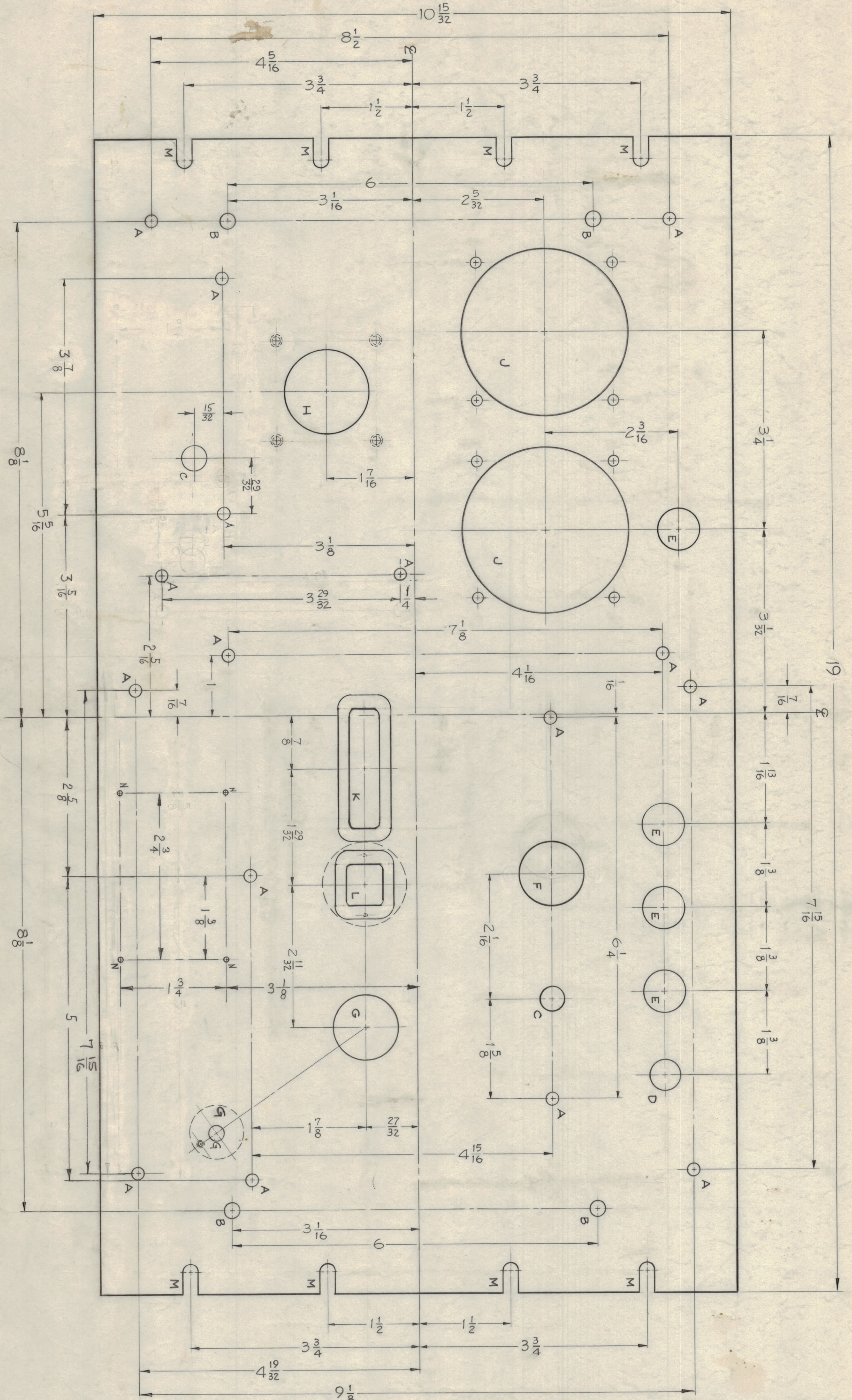


IF IT IS FOUND NECESSARY TO CHANGE ANY DIMENSIONS OR TOLERANCES ON THIS DRAWING, THE PURCHASER SHALL BE RESPONSIBLE FOR THE NECESSARY CHANGES. THE PURCHASER WILL BE RESPONSIBLE FOR THE NECESSARY CHANGES. THE PURCHASER WILL BE RESPONSIBLE FOR THE NECESSARY CHANGES.

NOTICE TO PERSONS RECEIVING THIS DRAWING
 THE TECHNICAL MATERIAL CORPORATION
 PROPRIETARY RIGHT IN THE MATERIAL DISCLOSED HEREIN.
 THIS DRAWING IS ISSUED IN CONFIDENCE FOR ENGINEERING INFORMATION ONLY AND MAY NOT BE REPRODUCED OR USED IN ANY MANNER WITHOUT THE WRITTEN PERMISSION OF THE TECHNICAL MATERIAL CORPORATION. THE TECHNICAL MATERIAL CORPORATION WILL NOT BE HELD RESPONSIBLE FOR ANY DAMAGE OR LOSS OF PROFITS, BUSINESS, OR REVENUE, OR FOR ANY SPECIAL, INCIDENTAL, OR CONSEQUENTIAL DAMAGES, INCLUDING ATTORNEY'S FEES, ARISING OUT OF OR FROM THIS DRAWING OR FROM ANY ASSISTANCE AND IS SUBJECT TO RECEIPT AT ANY TIME.

Property of:
 THE TECHNICAL MATERIAL CORPORATION
 MAMARONECK, NEW YORK



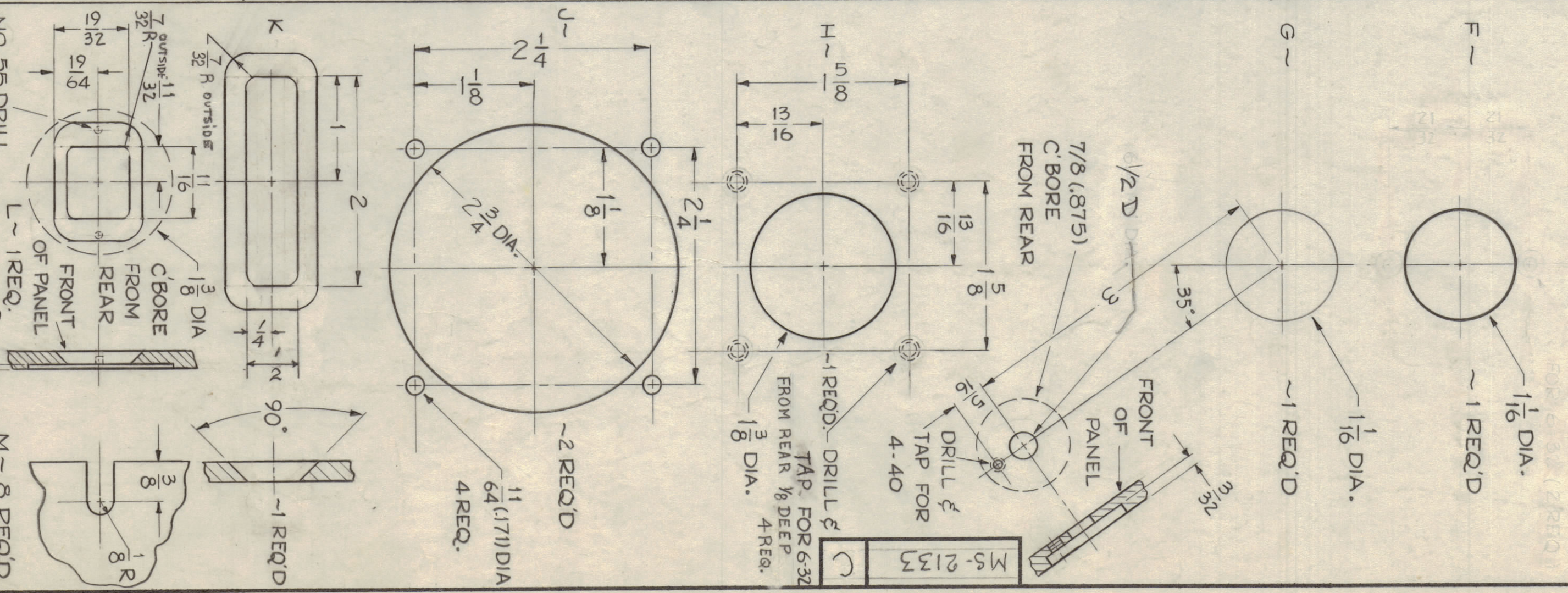
MACHINING ~
 1 ~ LATERAL BOW OF PANEL MUST BE KEPT TO 0.01 TOLERANCE.
 2 ~ MILL ALL EDGES.
 3 ~ HOLES MUST BE DRILLED.
 4 ~ PANEL MUST BE FREE OF ALL MACHINING MARKS, GOUGES, & SCRATCHES.
 IF NECESSARY SAND FRONT OF PANEL WITH NO. 120 GRIT SANDPAPER.

FINISH ~
 S404 ~ YELLOW IRIDITE
 S114 ZINC CHROMATE PRIMER } FRONT & EDGES ONLY
 S115 TMC SMOOTH GRAY ENAMEL }

NOTE ~ THIS PANEL FOR TEMPORARY USE UNTIL STOCK IS DEPLETED. FOR NEW PANELS USE DWG. NO. MS-2346. SEE MEMO # 2699.

REF: LD-716
 LD-717

- HOLES ~
- A ~ 13/64 (.203) DIA. 16 REQ.
 - B ~ 1/4 (.250) DIA. 4 REQ.
 - C ~ 13/32 (.406) DIA. 2 REQ.
 - D ~ 1/2 (.500) DIA. 1 REQ.
 - E ~ 11/16 (.687) DIA. 4 REQ.
 - N ~ # 47 DRILL (.078) D. 4 REQ.



REV	DATE	BY	CHKD	DESCRIPTION
1	8-14-64	WAS	MS	INITIAL DESIGN
2	8-14-64	WAS	MS	REVISED
3	8-14-64	WAS	MS	REVISED
4	8-14-64	WAS	MS	REVISED
5	8-14-64	WAS	MS	REVISED
6	8-14-64	WAS	MS	REVISED
7	8-14-64	WAS	MS	REVISED
8	8-14-64	WAS	MS	REVISED
9	8-14-64	WAS	MS	REVISED
10	8-14-64	WAS	MS	REVISED

DEC DIM ±	DEC DIM ±
FRACTIONAL DIM ±	FRACTIONAL DIM ±
ANGULAR DIM ±	ANGULAR DIM ±

UNLESS OTHERWISE SPECIFIED	UNLESS OTHERWISE SPECIFIED
ALL DIMENSIONS ARE IN INCHES	ALL DIMENSIONS ARE IN INCHES
FRACTIONS ARE TO BE WRITTEN AS SHOWN	FRACTIONS ARE TO BE WRITTEN AS SHOWN
TOLERANCES ARE AS SHOWN	TOLERANCES ARE AS SHOWN

REQ	QTY	UNIT	DESCRIPTION
1	1	UNIT	CMO-2
1	1	UNIT	CMO-1
1	1	UNIT	LD-717
1	1	UNIT	LD-716

HEAT TREAT SPEC.	ASBY NO.	DATE
	2-3-60	3-2-60
FINISH & SPEC. NO.	USED ON	
SEE NOTE		

REQ	PART NO.	DESCRIPTION	SYMBOL
1	3/16 THICK	ALUMINUM	
1	2024 - T3	PANEL, FRONT	CMO
1	HEAT TREAT SPEC.		
1	FINISH & SPEC. NO.		

DESIGNED BY	CHECKED BY	DATE
John C. Biele	MS-2133	8-14-64