

HOLES ~

A ~ 3/16 (I87) DIA. 2 REQ.

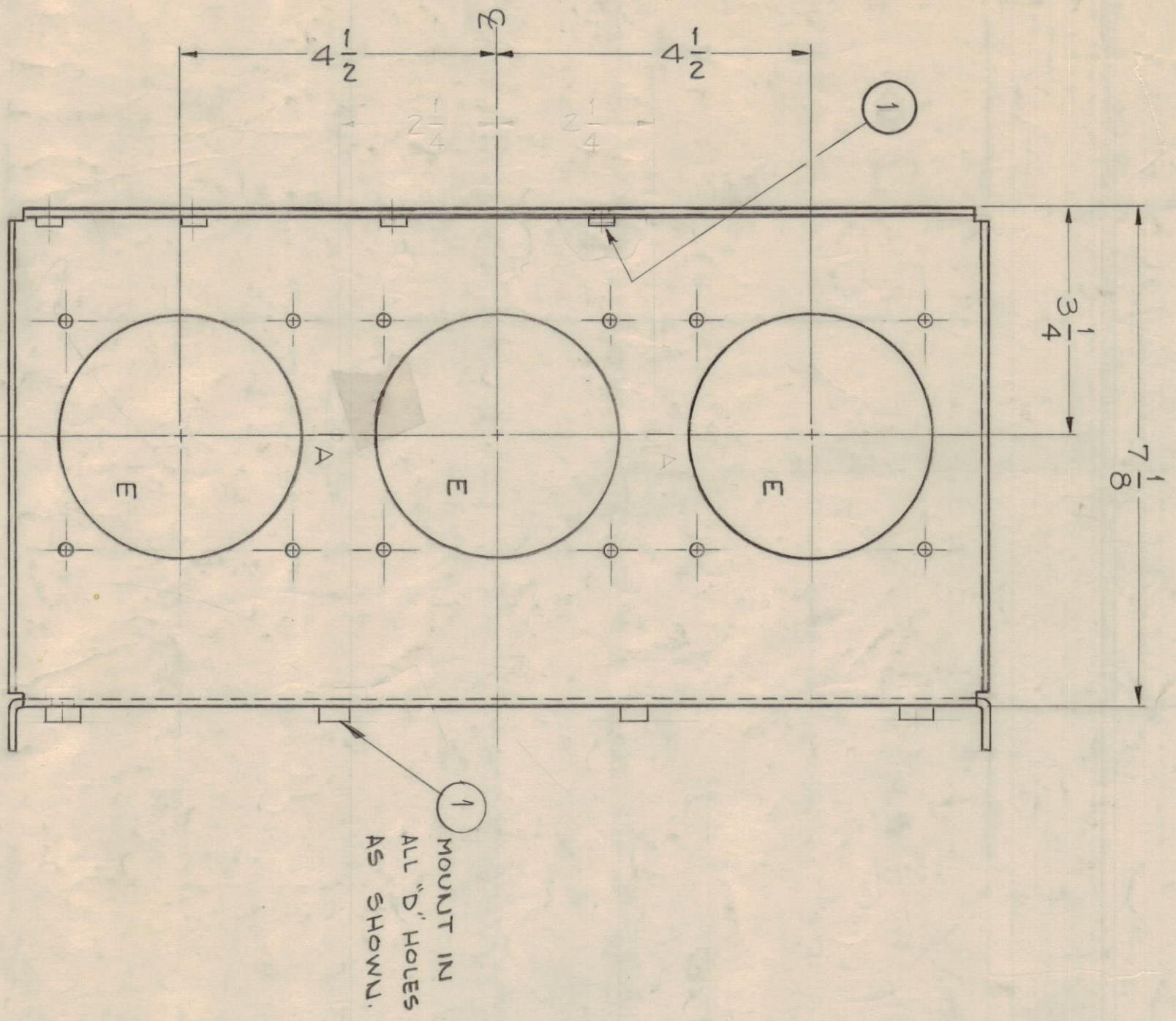
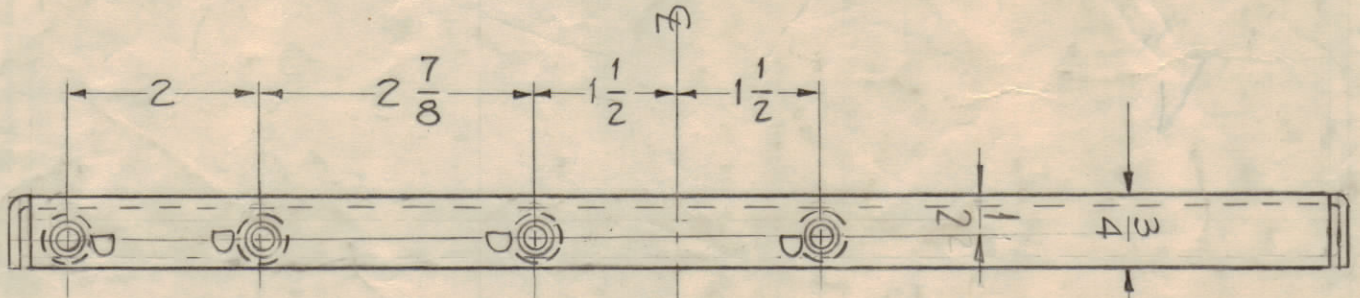
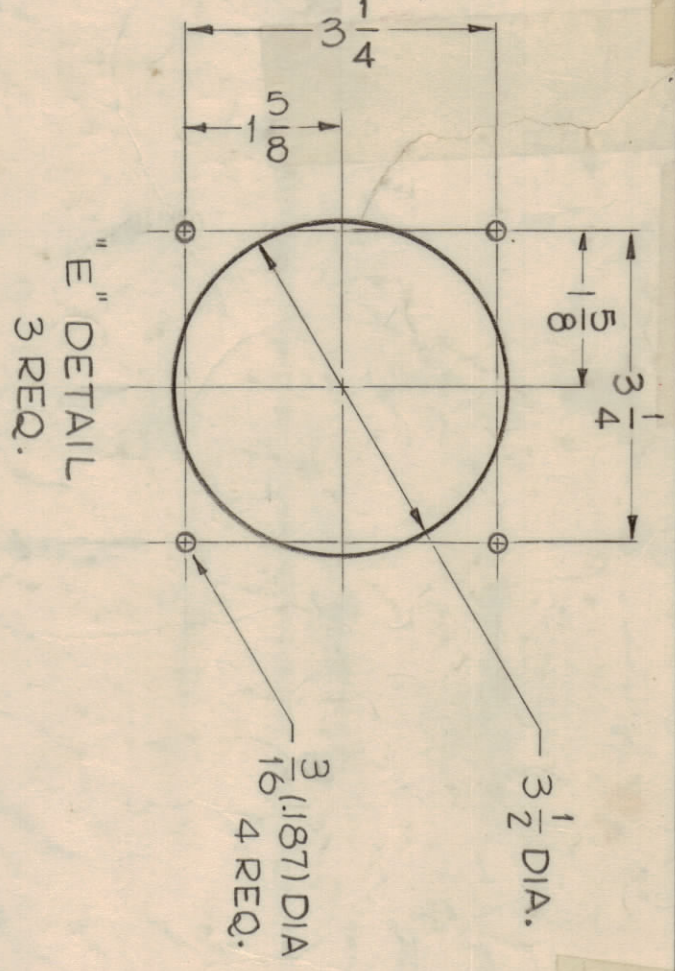
B ~ 13/64 (.203) DIA. 3 REQ.

C ~ 5/16 (.312) DIA. 4 REQ.

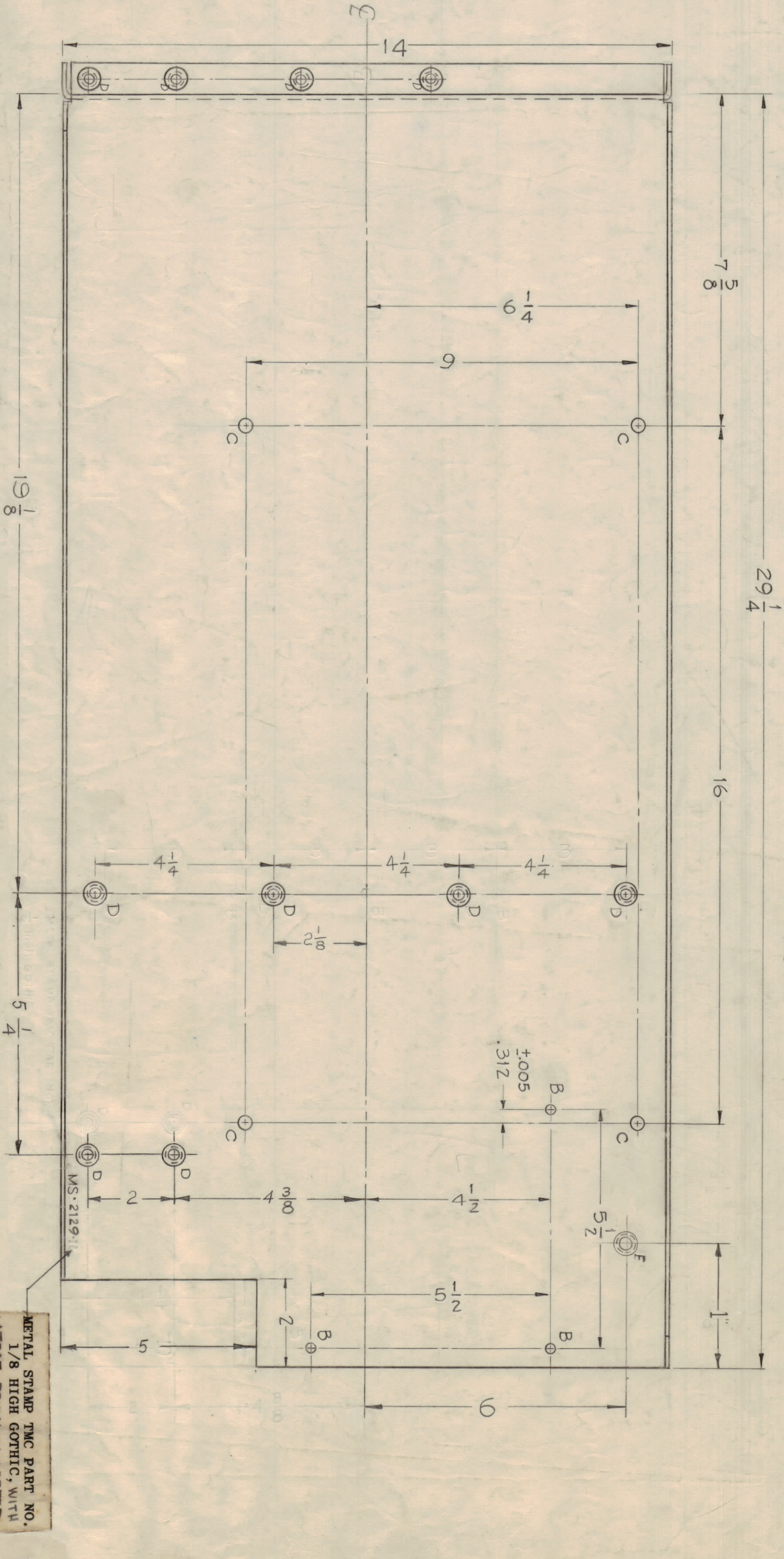
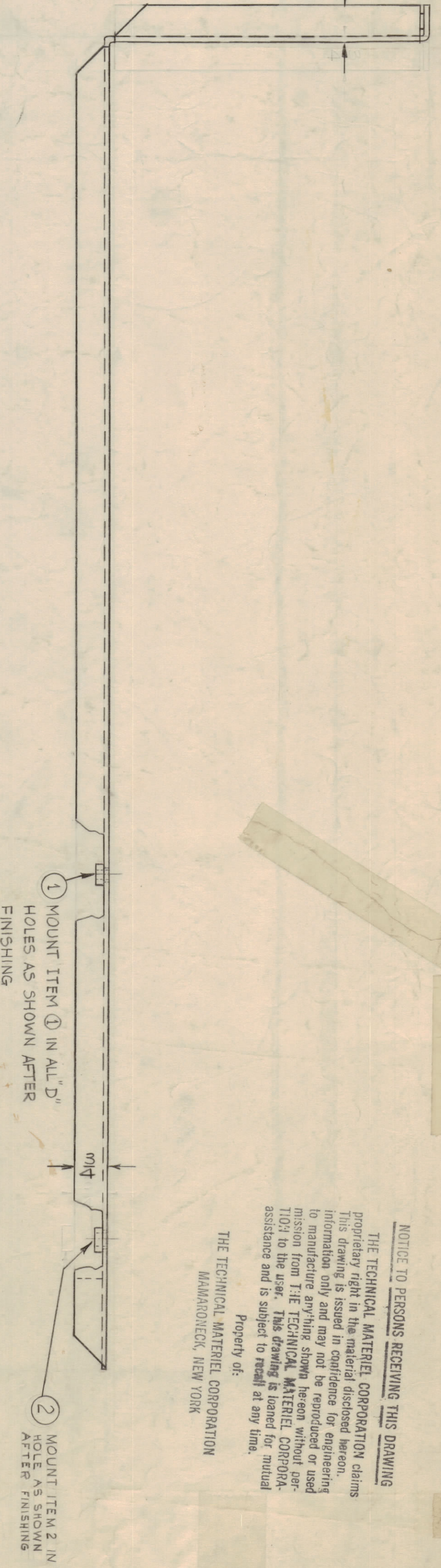
D ~ .253 MAX., .250 MIN. DIA. 10 REQ.

E ~ 3/16 (.187) DIA. 4 REQ.

F ~ .344-.347 DIA. 1 REQ.



NOTE ~ ALL BEND RADII 1/8"



METAL STAMP THE PART NO. 1/8 HIGH GOTHIC, WITH LATEST REVISION LETTER.

ITEM NO.	DESCRIPTION	QTY	UNIT
R	2	RELOCATED (2) HOLES	3/2 1/2
N	2	2" HOLES ADDED	4.176
M	1	5/16" DIA. HOLE WAS 344-.377 DIA.	1.141
L	1	5/16" DIA. HOLE WAS 4-1/2	1.141
K	1	ITEM (D) REVERSED ON LEFT SIDE VIEW	1.141
J	1	ITEM 1, 8 REQ. WAS 4 REQ. ITEM 2, 10 REQ. WAS 10 REQ. ITEM 3, 10 REQ. WAS 10 REQ. ITEM 4, 10 REQ. WAS 10 REQ. ITEM 5, 10 REQ. WAS 10 REQ. ITEM 6, 10 REQ. WAS 10 REQ. ITEM 7, 10 REQ. WAS 10 REQ. ITEM 8, 10 REQ. WAS 10 REQ. ITEM 9, 10 REQ. WAS 10 REQ. ITEM 10, 10 REQ. WAS 10 REQ.	1.141
I	1	ITEM 11, 8 REQ. WAS 4 REQ. ITEM 12, 10 REQ. WAS 10 REQ. ITEM 13, 10 REQ. WAS 10 REQ. ITEM 14, 10 REQ. WAS 10 REQ. ITEM 15, 10 REQ. WAS 10 REQ. ITEM 16, 10 REQ. WAS 10 REQ. ITEM 17, 10 REQ. WAS 10 REQ. ITEM 18, 10 REQ. WAS 10 REQ. ITEM 19, 10 REQ. WAS 10 REQ. ITEM 20, 10 REQ. WAS 10 REQ.	1.141
H	1	ITEM 21, 8 REQ. WAS 4 REQ. ITEM 22, 10 REQ. WAS 10 REQ. ITEM 23, 10 REQ. WAS 10 REQ. ITEM 24, 10 REQ. WAS 10 REQ. ITEM 25, 10 REQ. WAS 10 REQ. ITEM 26, 10 REQ. WAS 10 REQ. ITEM 27, 10 REQ. WAS 10 REQ. ITEM 28, 10 REQ. WAS 10 REQ. ITEM 29, 10 REQ. WAS 10 REQ. ITEM 30, 10 REQ. WAS 10 REQ.	1.141
G	1	ITEM 31, 8 REQ. WAS 4 REQ. ITEM 32, 10 REQ. WAS 10 REQ. ITEM 33, 10 REQ. WAS 10 REQ. ITEM 34, 10 REQ. WAS 10 REQ. ITEM 35, 10 REQ. WAS 10 REQ. ITEM 36, 10 REQ. WAS 10 REQ. ITEM 37, 10 REQ. WAS 10 REQ. ITEM 38, 10 REQ. WAS 10 REQ. ITEM 39, 10 REQ. WAS 10 REQ. ITEM 40, 10 REQ. WAS 10 REQ.	1.141
F	1	ITEM 41, 8 REQ. WAS 4 REQ. ITEM 42, 10 REQ. WAS 10 REQ. ITEM 43, 10 REQ. WAS 10 REQ. ITEM 44, 10 REQ. WAS 10 REQ. ITEM 45, 10 REQ. WAS 10 REQ. ITEM 46, 10 REQ. WAS 10 REQ. ITEM 47, 10 REQ. WAS 10 REQ. ITEM 48, 10 REQ. WAS 10 REQ. ITEM 49, 10 REQ. WAS 10 REQ. ITEM 50, 10 REQ. WAS 10 REQ.	1.141
E	1	ITEM 51, 8 REQ. WAS 4 REQ. ITEM 52, 10 REQ. WAS 10 REQ. ITEM 53, 10 REQ. WAS 10 REQ. ITEM 54, 10 REQ. WAS 10 REQ. ITEM 55, 10 REQ. WAS 10 REQ. ITEM 56, 10 REQ. WAS 10 REQ. ITEM 57, 10 REQ. WAS 10 REQ. ITEM 58, 10 REQ. WAS 10 REQ. ITEM 59, 10 REQ. WAS 10 REQ. ITEM 60, 10 REQ. WAS 10 REQ.	1.141
D	1	ITEM 61, 8 REQ. WAS 4 REQ. ITEM 62, 10 REQ. WAS 10 REQ. ITEM 63, 10 REQ. WAS 10 REQ. ITEM 64, 10 REQ. WAS 10 REQ. ITEM 65, 10 REQ. WAS 10 REQ. ITEM 66, 10 REQ. WAS 10 REQ. ITEM 67, 10 REQ. WAS 10 REQ. ITEM 68, 10 REQ. WAS 10 REQ. ITEM 69, 10 REQ. WAS 10 REQ. ITEM 70, 10 REQ. WAS 10 REQ.	1.141
C	1	ITEM 71, 8 REQ. WAS 4 REQ. ITEM 72, 10 REQ. WAS 10 REQ. ITEM 73, 10 REQ. WAS 10 REQ. ITEM 74, 10 REQ. WAS 10 REQ. ITEM 75, 10 REQ. WAS 10 REQ. ITEM 76, 10 REQ. WAS 10 REQ. ITEM 77, 10 REQ. WAS 10 REQ. ITEM 78, 10 REQ. WAS 10 REQ. ITEM 79, 10 REQ. WAS 10 REQ. ITEM 80, 10 REQ. WAS 10 REQ.	1.141
B	1	ITEM 81, 8 REQ. WAS 4 REQ. ITEM 82, 10 REQ. WAS 10 REQ. ITEM 83, 10 REQ. WAS 10 REQ. ITEM 84, 10 REQ. WAS 10 REQ. ITEM 85, 10 REQ. WAS 10 REQ. ITEM 86, 10 REQ. WAS 10 REQ. ITEM 87, 10 REQ. WAS 10 REQ. ITEM 88, 10 REQ. WAS 10 REQ. ITEM 89, 10 REQ. WAS 10 REQ. ITEM 90, 10 REQ. WAS 10 REQ.	1.141
A	1	ITEM 91, 8 REQ. WAS 4 REQ. ITEM 92, 10 REQ. WAS 10 REQ. ITEM 93, 10 REQ. WAS 10 REQ. ITEM 94, 10 REQ. WAS 10 REQ. ITEM 95, 10 REQ. WAS 10 REQ. ITEM 96, 10 REQ. WAS 10 REQ. ITEM 97, 10 REQ. WAS 10 REQ. ITEM 98, 10 REQ. WAS 10 REQ. ITEM 99, 10 REQ. WAS 10 REQ. ITEM 100, 10 REQ. WAS 10 REQ.	1.141

REQ. NO.	REQ. UNIT	DESCRIPTION	USED ON	ASBY NO.	DATE
1		GPT 40K			3-17-60

MATERIAL	TYPE & TEMPER	HEAT TREAT SPEC.	FINISH & SPEC. NO.
ALUMINUM	5052 - H-32	5404-IRIDIUM	

REQ. ITEM	PART NO.	DESCRIPTION	SYMBOL
1	NT129-420-6	NUT, ROUND, SWAGE TYPE	E
2	NT129-1032-6	NUT, ROUND, SWAGE TYPE	D

DRAWN	ELEC. DES. APP.	MECH. DES. APP.
John C. Bielle		

CHECKED	FINAL APPROVAL
	MS-2129 R

NOTICE TO PERSONS RECEIVING THIS DRAWING

THE TECHNICAL MATERIAL CORPORATION claims proprietary right in the material disclosed herein. This drawing is issued in confidence for engineering information only and may not be reproduced or used to manufacture a part that may not be reproduced or used in any way without the written permission of THE TECHNICAL MATERIAL CORPORATION. THE DRAWING IS LOANED FOR MUTUAL ASSISTANCE AND IS SUBJECT TO RETURN AT ANY TIME.

Property of:
THE TECHNICAL MATERIAL CORPORATION
MAMARONCK, NEW YORK

MS-2129 R