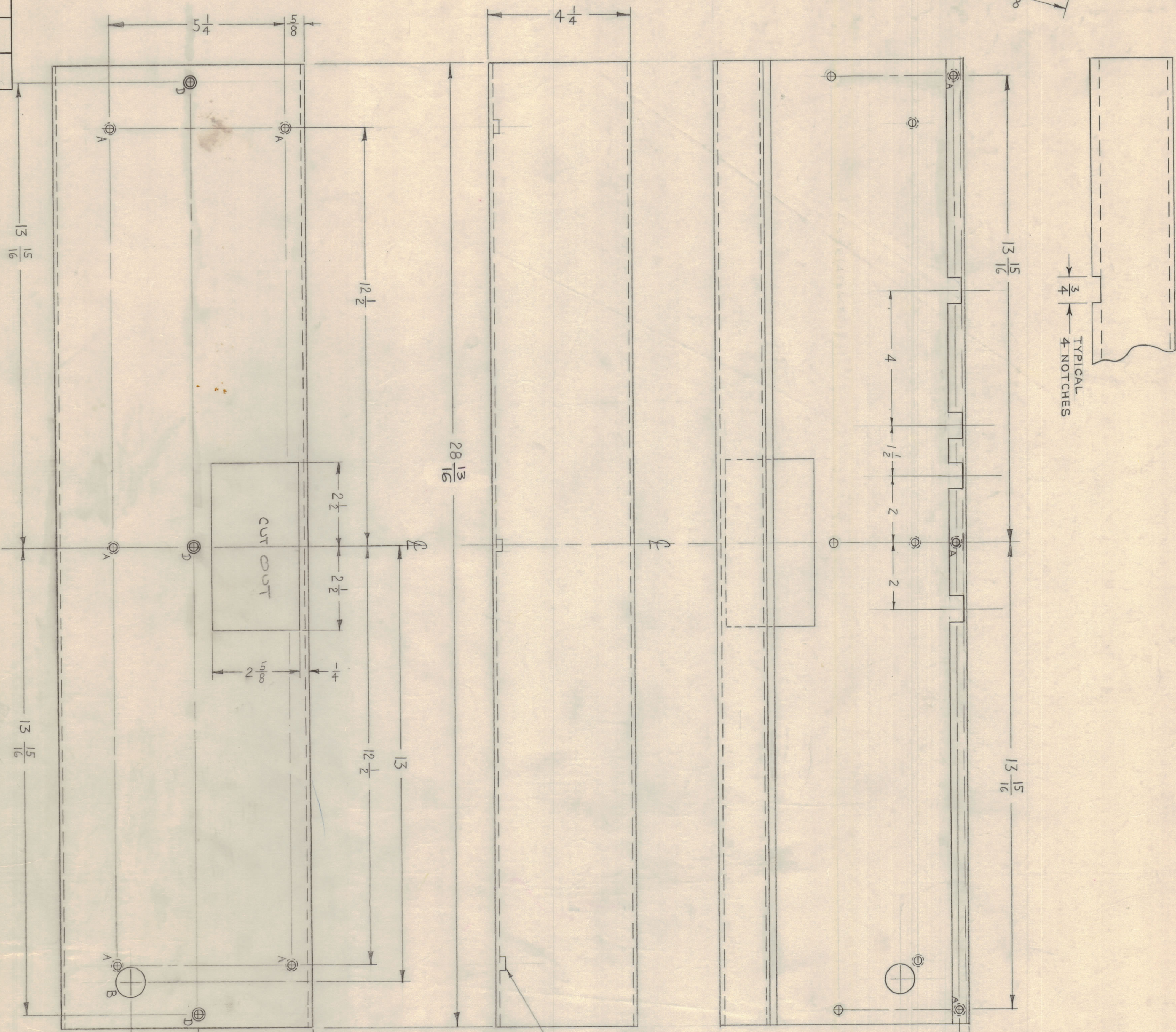
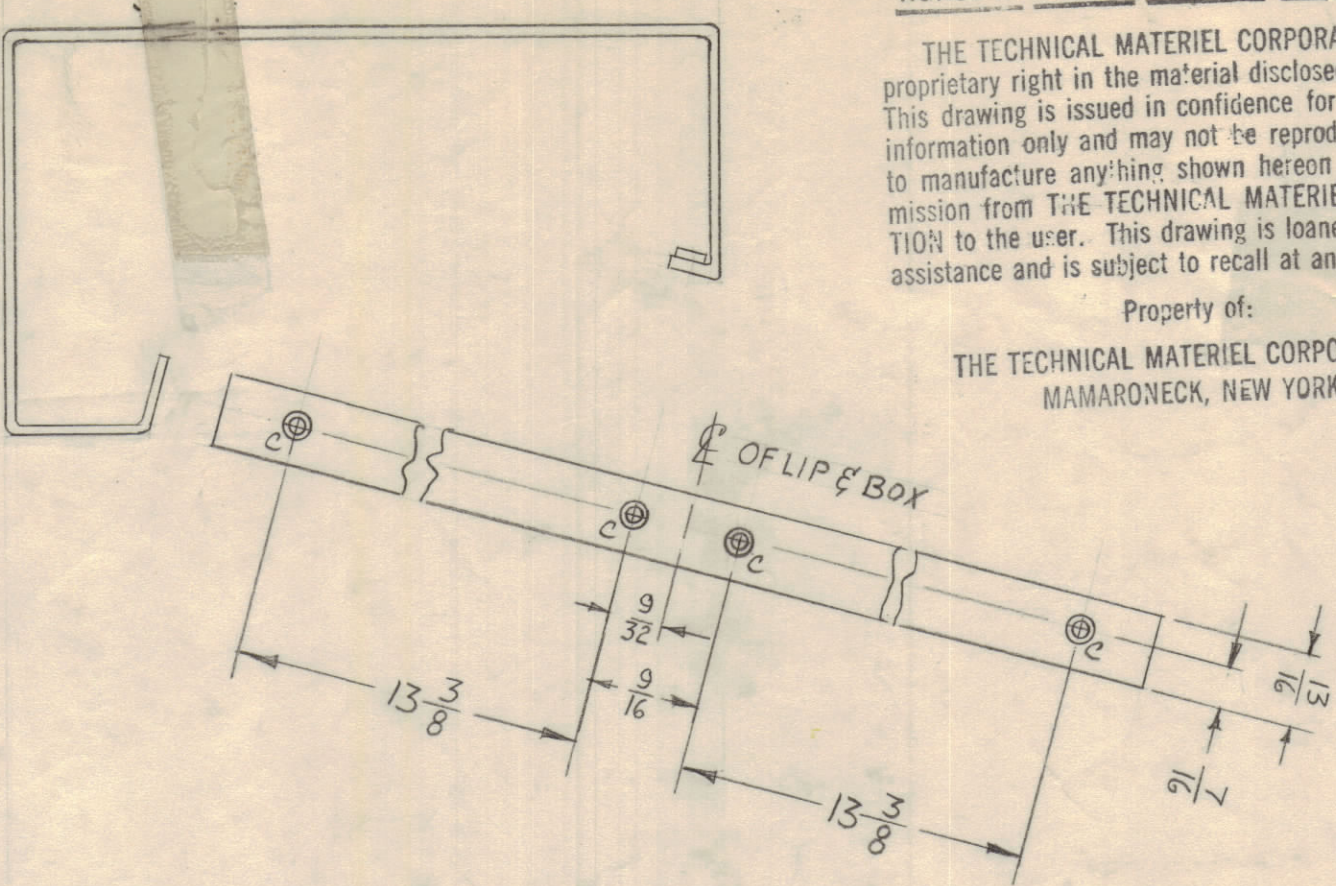


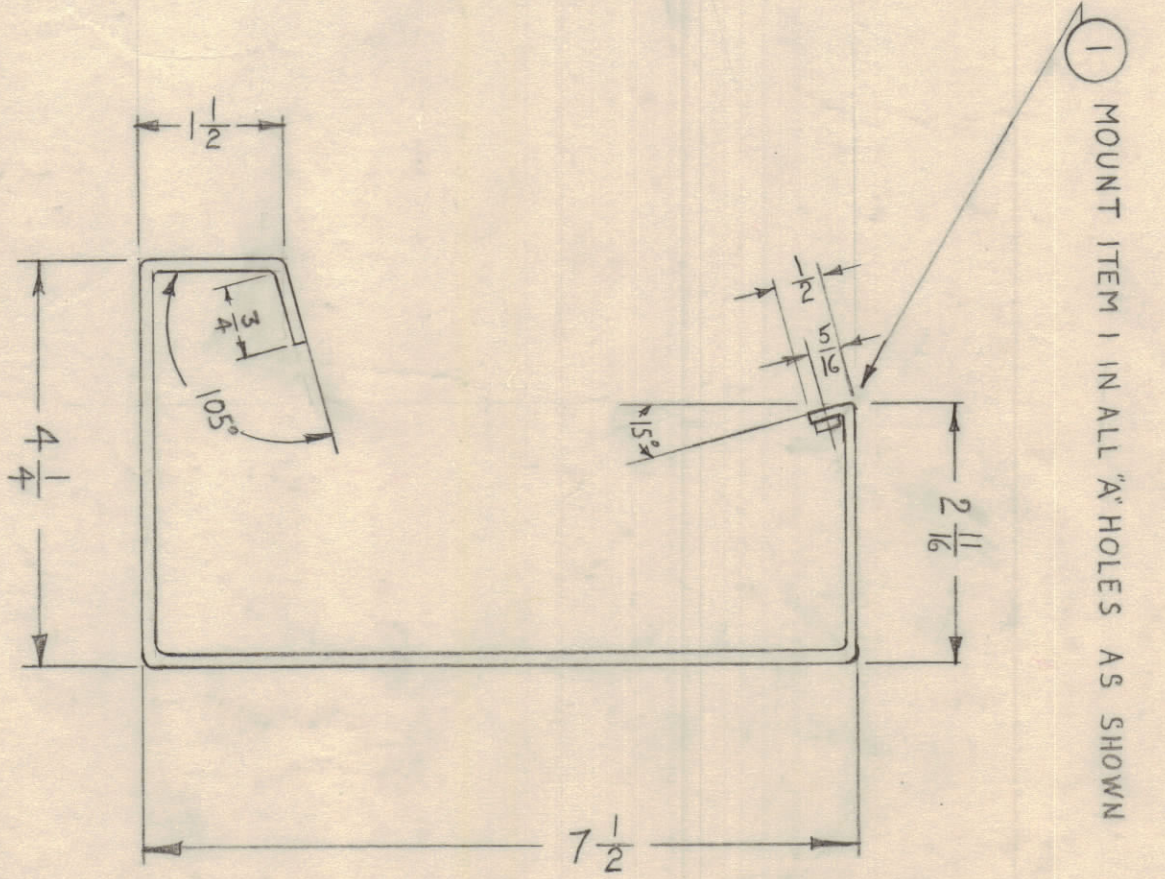
NOTICE TO PERSONS RECEIVING THIS DRAWING

THE TECHNICAL MATERIEL CORPORATION claims proprietary right in the material disclosed herein. This drawing is issued in confidence for engineering information only and may not be reproduced or used to manufacture any thing shown hereon without permission from THE TECHNICAL MATERIEL CORPORATION to the user. This drawing is loaned for mutual assistance and is subject to recall at any time.

Property of:
THE TECHNICAL MATERIEL CORPORATION
MAMARONECK, NEW YORK



TYPICAL
4 NOTCHES



FINISH NOTE
S404 YELL. IRIDITE
S115 TMC SMOOTH GREY

A - 221-224 D (FOR NT-129-832-4)
B - 7/8 (8751 D)
C - DR & C SINK FOR G-32 F.H.S
D - DR & C SINK FOR 8-32 F.H.S

8 REQ.
1 "
4 "
3 "

REV.	DATE	BY	CHKD.	DESCRIPTION
1	1/9/63	10441	10441	NOTCHES ADDED TO TOP LIP
2				NOTCHES CHANGED FROM 3/8 TO 3/16

NO.	UNIT	MODEL	SECTION	USED ON	ARBY. NO.	DATE
1		QPT-40K	AT-101			3-15-60

REQ. ITEM	PART NO.	DESCRIPTION	SYMBOL
8	NT-129-832-4	NUT ROUND, SWAGE TYPE	
	.064		
	ALUMINUM		
	5052 - H32		
	TYPE & TEMPER		
	HEAT TREAT. SPEC.		
	FINISH & SPEC. NO.		

DESIGNED BY	10441	CHECKED	10441
DRAWN	10441	MECH. DES. APP.	10441
ENG. DES. APP.	10441	FINAL APPROVAL	10441
MS-2127	B		

MS-2127 B