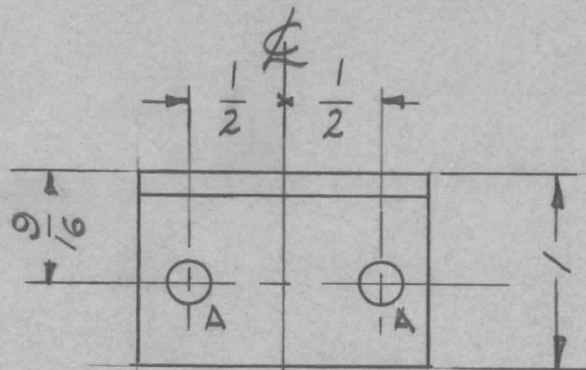


REQ. PER UNIT	USED ON			MS-2126
	MODEL	ASS'Y. NO.	DATE	
1	AT-101	GPT-40K	3-16-60	

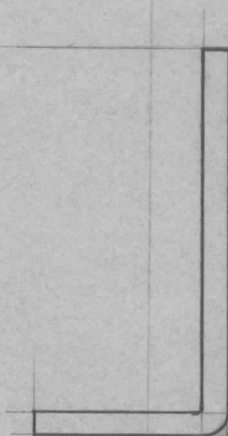
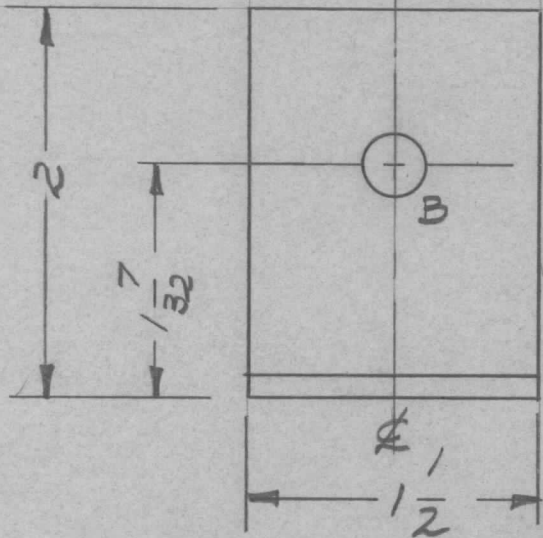


A ~ 7/32 (.218) D.

2 REQ

B ~ 5/16 (.312) D

1 "



ISSUE	ITEM	CHANGED FROM	DATE	CH. NO.	DRAFTS	CHECKER	ENG. APP.	REQ. ITEM	PART NO.	DESCRIPTION	SYMBOL	
								1/8 TH'K		THE TECHNICAL MATERIEL CORP. MAMARONECK, NEW YORK BRACKET, SWITCH SHAFT (ANTENNA TUNER)		
								STOCK SIZE				
								ALUMINUM				
								MATERIAL				
								5052-H32		<i>TORILLO</i>	<i>file</i>	<i>DR</i>
								TYPE & TEMPER	HEAT TREAT. SPEC.	DRAWN	CHECKED	FINAL APPROVAL
								6404-YEL. IRIDITE			<i>W6</i>	MS-2126
								FINISH & SPEC. NO.		ELEC. DES. APP.	MECH. DES. APP.	

TOLERANCES
 DEC. DIM. ±
 FRAC. DIM. ± 1/64
 ANGULAR DIM. ±

SCALE: FULL
 MAXIMUM ALLOWABLE TOLERANCES HAVE BEEN DETERMINED AND ANY DEVIATIONS WILL BE CAUSE FOR REJECTION:
 REMOVE ALL BURRS AND SHARP EDGES