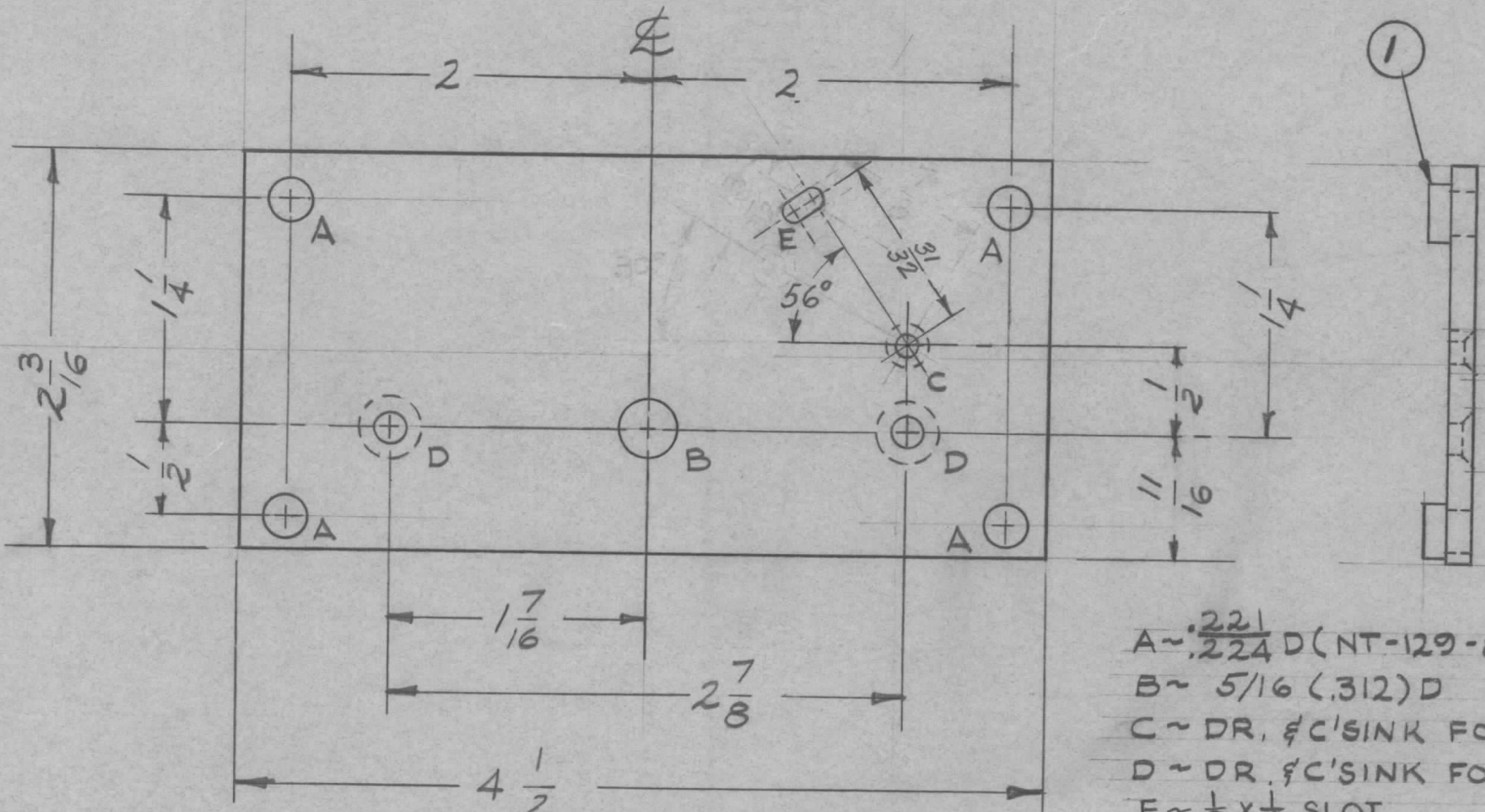


REQ. PER UNIT	USED ON			MS-2124 A
	MODEL	ASS'Y. NO.	DATE	
1	AT-101	GPT-40K	3-15-60	



- A ~ $\frac{221}{224} D$ (NT-129-832-6) 4
- B ~ $5/16$ (.312) D 1
- C ~ DR. ϕ C'SINK FOR 4-40 FHS 1
- D ~ DR. ϕ C'SINK FOR 8-32 FHS 2
- E ~ $1/8 \times 1/4$ SLOT 1

REF: LD 723(1)

4	1	NT-129-832-6	NUT, ROUND	
REQ. ITEM	PART NO.		DESCRIPTION	SYMBOL
1/8 TH'K.			THE TECHNICAL MATERIEL CORP.	
STOCK SIZE			MAMARONECK, NEW YORK	
ALUMINUM			PLATE, DETENT MOUNTING	
MATERIAL				
5052-H32			LABILLO	JUL
TYPE & TEMPER		HEAT TREAT. SPEC.	DRAWN	CHECKED
5404 ~ IRIDITE			LG	MS-2124 A
FINISH & SPEC. NO.			ELEC. DES. APP	MECH. DES. APP

A	1	SLOT "E" ADDED, REPLACES 1/8" HOLE	3-8-63	8478	RZ	JLS	JLS
ISSUE	ITEM	CHANGED FROM	DATE	CH. NO.	DRAFTS	CHECKER	ENG. APP.
TOLERANCES			SCALE: FULL				
DEC. DIM. ±			MAXIMUM ALLOWABLE TOLERANCES HAVE BEEN DETERMINED AND ANY DEVIATIONS WILL BE CAUSE FOR REJECTION. REMOVE ALL BURRS AND SHARP EDGES				
FRAC. DIM. ±							
ANGULAR DIM. ±			1/64				