

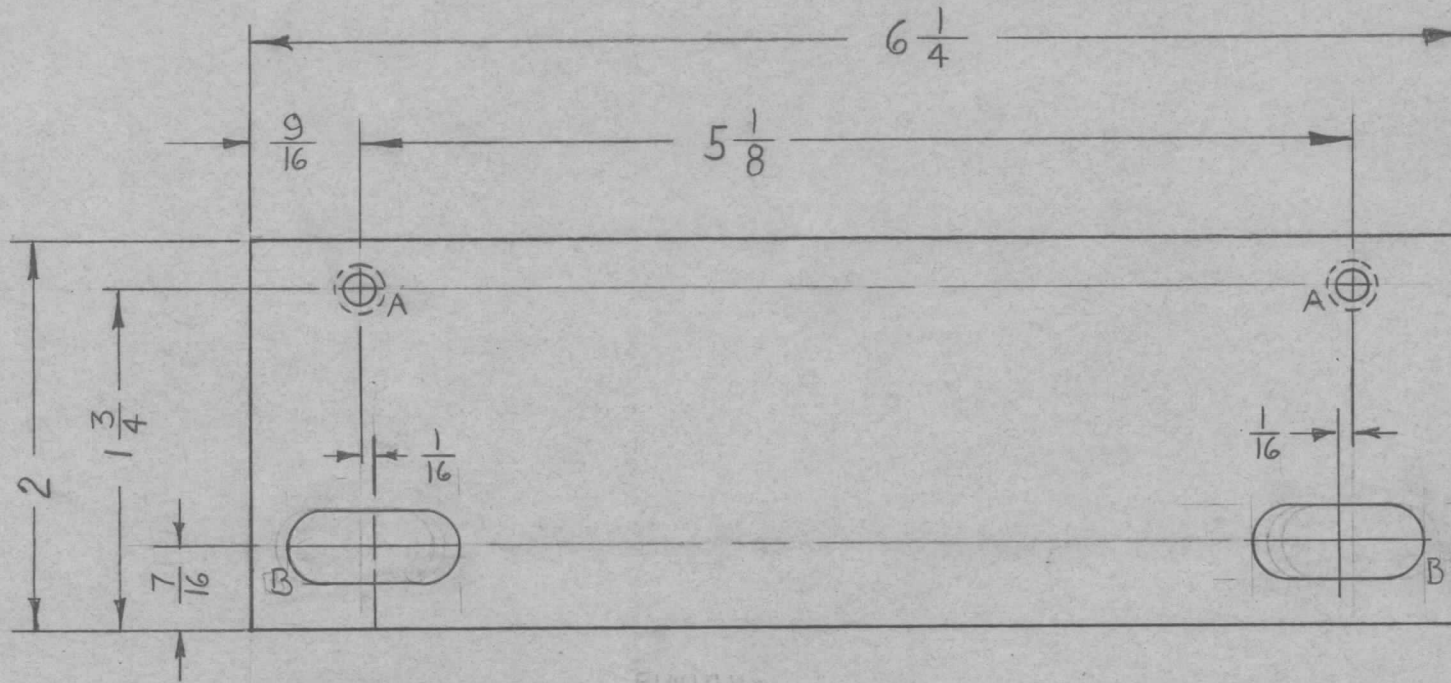
A~ DR. & C'SINK FOR 10-32

2 REQ.

B~ 3/8 x 7/8 SLOT

2 "

REQ. PER UNIT	USED ON			MS-2122	D
	MODEL	ASS'Y. NO.	DATE		
2	GPT-10K	AX-166	3-21-60		



FINISH

TMC PART NO.	PRIME OR DIP	FINISH
MS-2122-1	SI14 ZINC CHROM.	S220 TMC RCAF BLUE GRAY SMOOTH ENAMEL
MS-2122-2	OR PRIME & PAINT TO CUSTOMERS SPEC.	

504 YELL IRIDITE  
ZINC CHROMATE  
RCAF BLUE GRAY ENAMEL

D	1	MAT. WAS ALUMINUM	2/13/61	4156	RD	HQ	203	REQ. ITEM	PART NO.	DESCRIPTION	SYMBOL			
C	1	CHART CLARIFIED	6/13/60	2147	CS	JOB	203	1/8		THE TECHNICAL MATERIEL CORP. MAMARONECK, NEW YORK PLATE, DOOR LATCH BOTTOM, FRONT & REAR	D			
B	1	CHART ADDED	5-13-60	2251	CS	JOB	AW	STOCK SIZE						
A	1	"B" HOLE WAS 3/8 x 3/4	4-4-60	1977	MB	HQ	AW	MATERIAL						
ISSUE ITEM		CHANGED FROM	DATE	CH. NO.	DRAFTS	CHECKER	ENG. APP.	C.R.		W.F.	HQ	AW		
TOLERANCES			SCALE:					TYPE & TEMPER		HEAT TREAT. SPEC.	DRAWN	CHECKED	FINAL APPROVAL	
DEC. DIM. ± FRAC. DIM. ± 1/64 ANGULAR DIM. ±			MAXIMUM ALLOWABLE TOLERANCES HAVE BEEN DETERMINED AND ANY DEVIATIONS WILL BE CAUSE FOR REJECTION. REMOVE ALL BURRS AND SHARP EDGES					SEE NOTE					MS-2122	D
								FINISH & SPEC. NO.		ELEC. DES. APP		MECH. DES. APP		