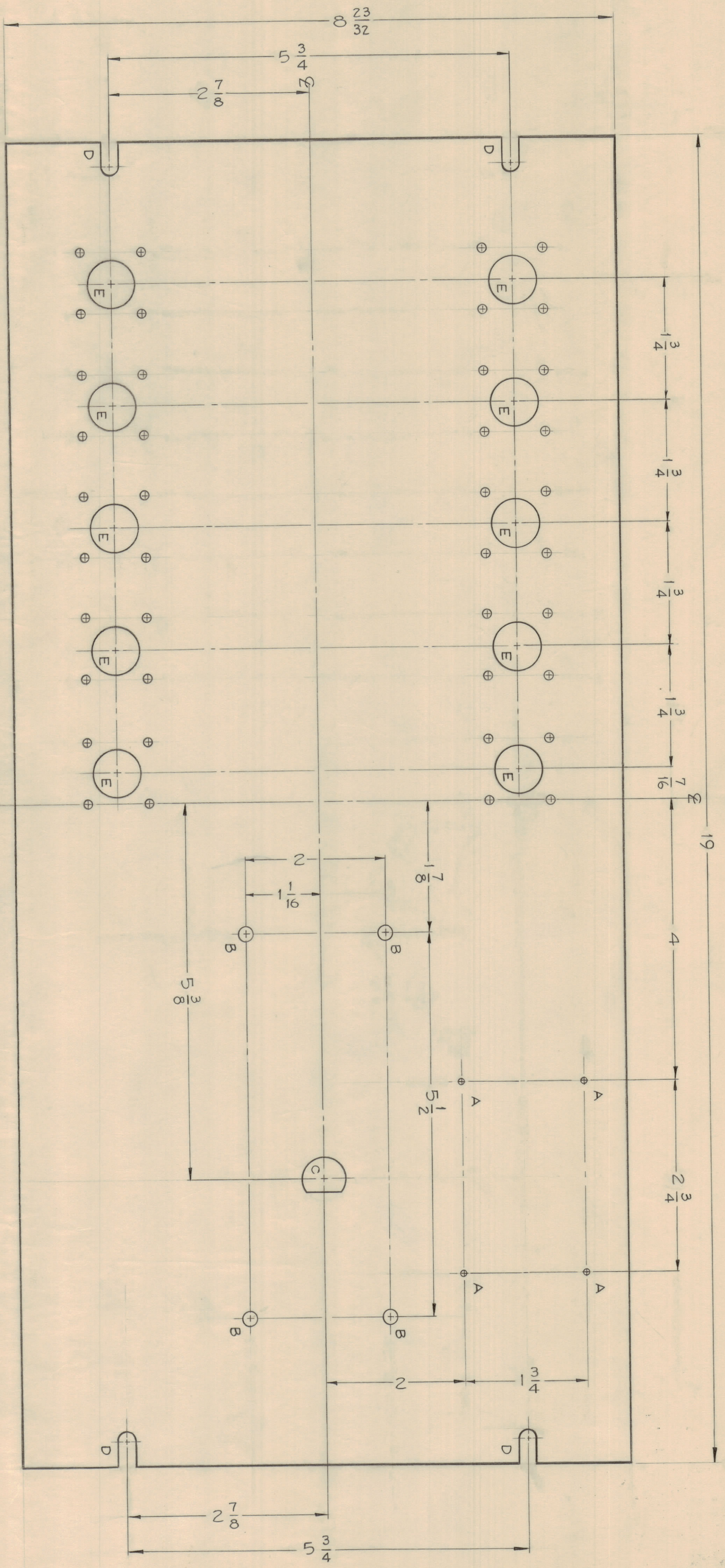


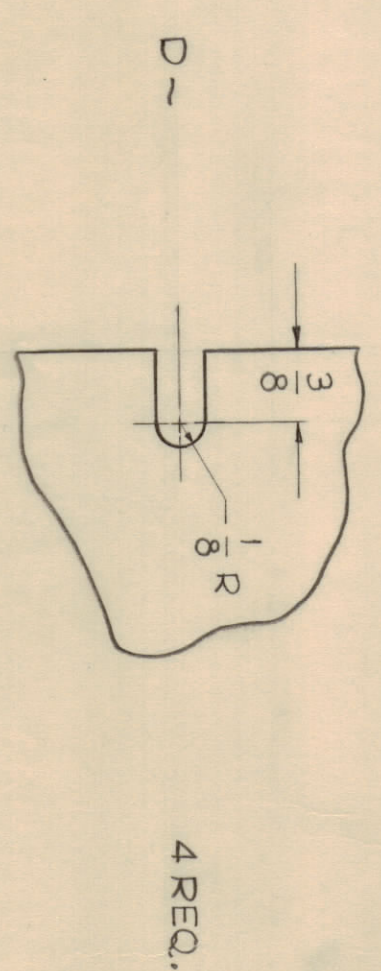
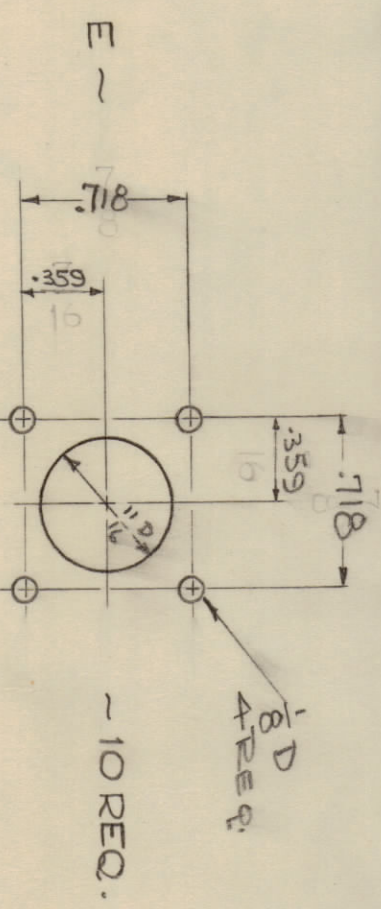
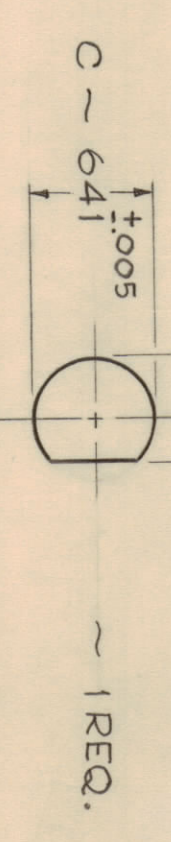
NOTICE TO PERSONS RECEIVING THIS DRAWING  
 THE TECHNICAL MATERIAL CORPORATION claims proprietary right in the material disclosed herein. This drawing is issued in confidence for engineering information only and may not be reproduced or used to manufacture anything shown hereon without permission of THE TECHNICAL MATERIAL CORPORATION. To the user this drawing is loaned for industrial assistance and is subject to recall at any time.  
 Property of:  
 THE TECHNICAL MATERIAL CORPORATION  
 MANHATTAN, NEW YORK



57-168

HOLES ~

A ~ NO. 47 DRILL (.078) DIA. 4 REQ.  
 B ~ (.196) DIA. 4 REQ.



4 REQ.

MACHINING ~

- 1 ~ LATERAL BOW OF PANEL MUST BE KEPT TO .031 TOLERANCE.
  - 2 ~ MILL ALL EDGES.
  - 3 ~ HOLES MUST BE DRILLED.
  - 4 ~ PANEL MUST BE FREE OF ALL MACHINING MARKS, GOUGES AND SCRATCHES. IF NECESSARY SAND FRONT OF PANEL WITH NO. 120 GRIT SANDPAPER.
- FINISH ~
- S404 ~ YELLOW IRIDIOTE
  - S114 ~ ZINC CHROMATE PRIMER
  - S115 ~ TWC SMOOTH GRAY ENAMEL
- FRONT & EDGES ONLY

REQ. NO.	ITEM	DESCRIPTION	DATE
1	QDP-65P102	LD-7759	8-10-60
1	QDP-65P10	LD-7112	8-10-60

REQ. NO.	ITEM	DESCRIPTION	SYMBOL
1	ALUMINUM	3/16 THICK	
1	ALUMINUM	PANEL, FRONT	

ISSUE NO.	DESCRIPTION	DATE	CH. NO.	PARTS	CHECKED	ENG. APP.

MAXIMUM ALLOWABLE TOLERANCES HAVE BEEN INDICATED ON THIS DRAWING. ALL DIMENSIONS WILL BE GIVEN FOR REFERENCE. REMOVE ALL BUMPS AND SHARP EDGES.

FORM-111

MS-2110