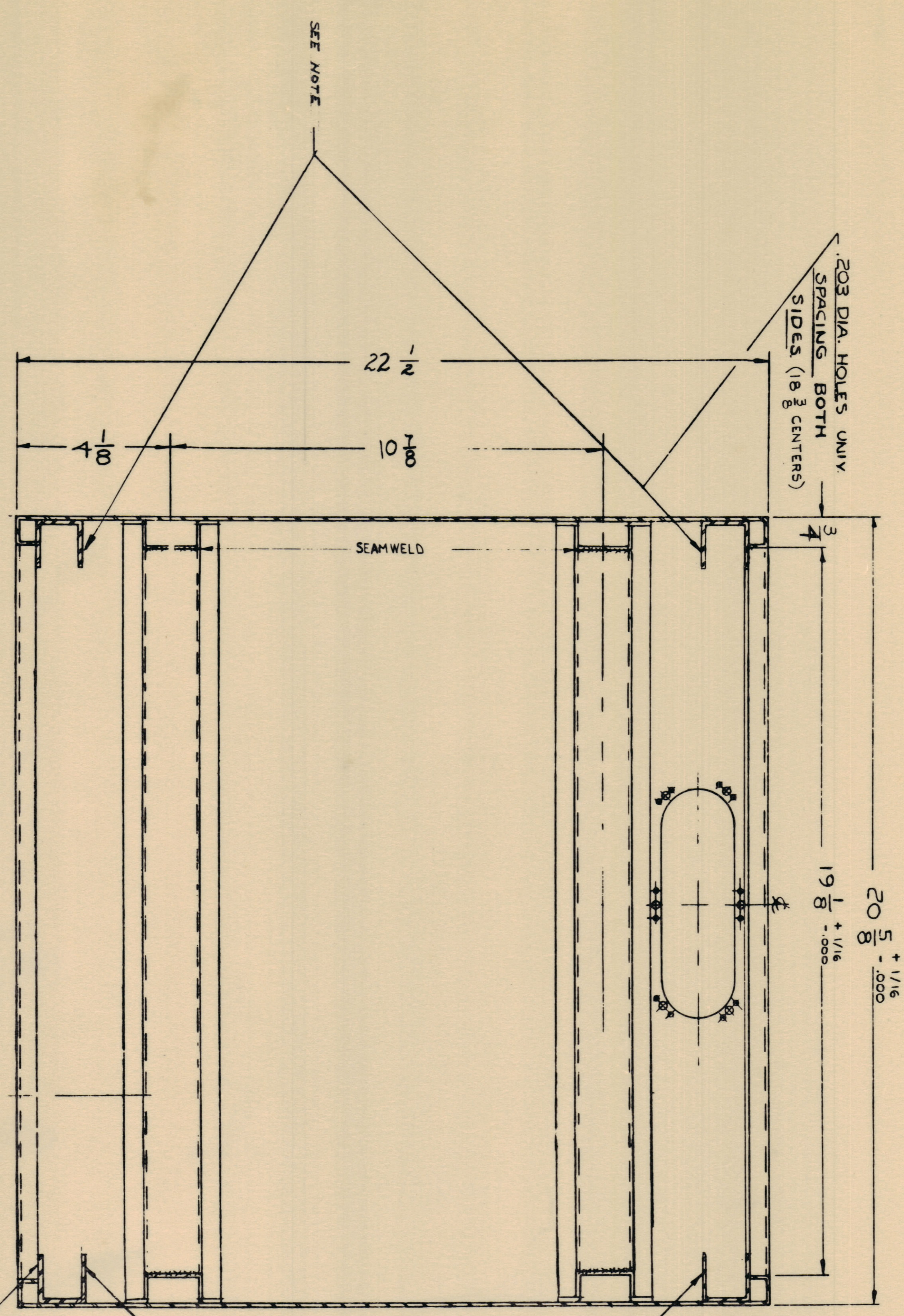


IF IT IS FOUND NECESSARY TO CHANGE ANY TOLERANCE OR DIMENSION ON THIS DRAWING NOTIFY THE PURCHASER PROMPTLY. MATERIAL ALLOWABLE TOLERANCES HAVE BEEN DETERMINED AND DEVIATIONS WILL BE CAUSE FOR REJECTION. REMOVE ALL SPURS AND BURRS FROM SURFACES.

ISSUE 1154	CHANGED FROM	DWG. CH. NO. 10474	DATE 10-1-48
DESIGNER	TOLGAMER	SCALE	
DRAWN BY		CHECKED BY	
APPROVED BY		DATE	



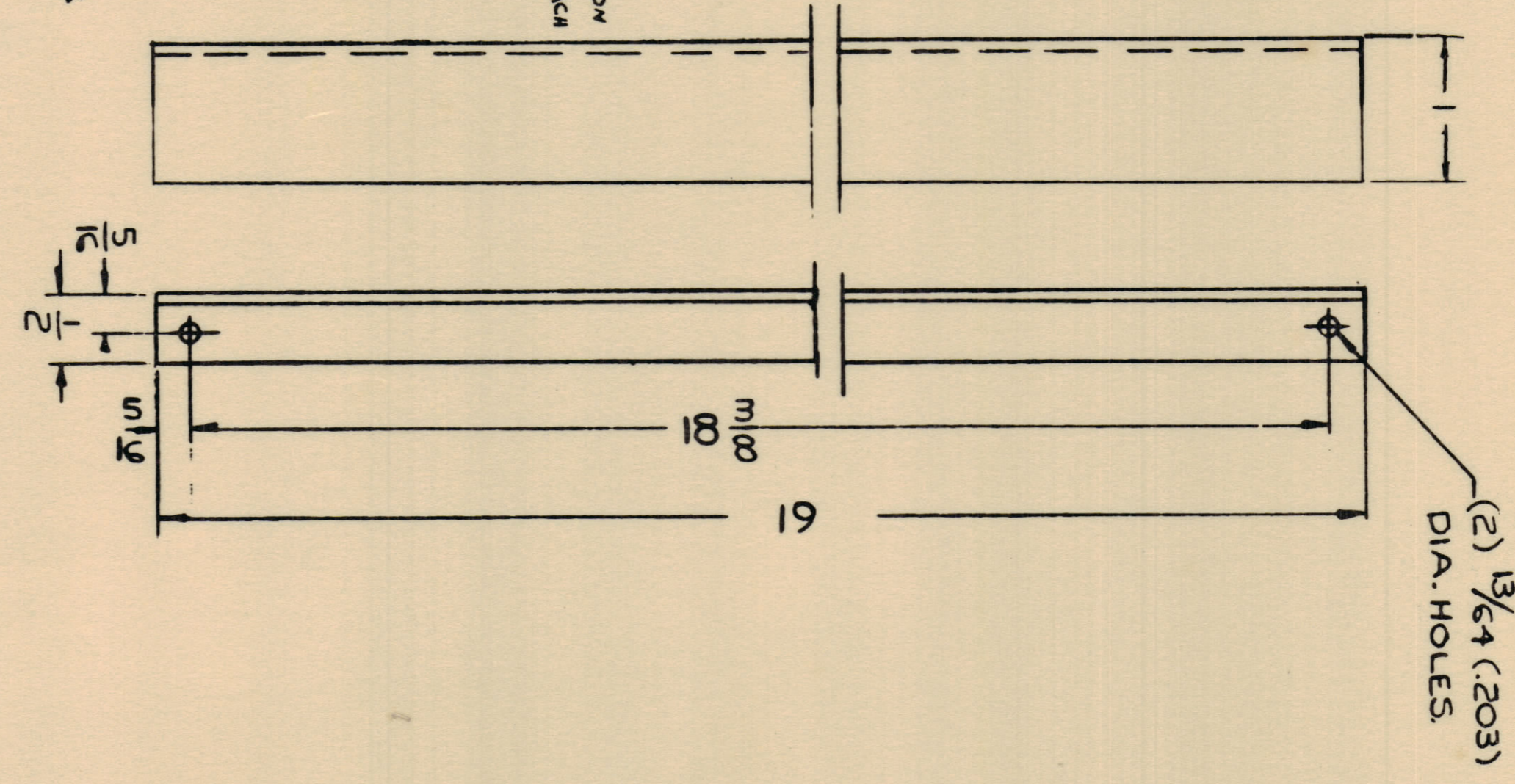
SECTION B-B
SEE SHIT I
FRONT

UNLESS OTHERWISE SPECIFIED, DIMENSIONS ARE IN INCHES AND DECIMALS THEREOF. TOLERANCES ARE AS SHOWN. FINISHES ARE AS SPECIFIED. UNLESS OTHERWISE SPECIFIED, DIMENSIONS ARE IN INCHES AND DECIMALS THEREOF. TOLERANCES ARE AS SHOWN. FINISHES ARE AS SPECIFIED.

203 DIA HLS. UNIV SPACING BOTH SIDES

#10-32 TAPPED HLS UNIV SPACING BOTH SIDES

NOTE: ALL MEMBER HOLES FRONT & REAR MUST BE ON A HORIZONTAL PLANE TO EACH OTHER. WITHIN 1/32 TOL.



REMOVABLE STIFFENERS MOUNTED BY MANUFACTURER ONLY FOR SHIPPING PURPOSES
3 PER UNIT 2 FRONT, 1 REAR EVENLY SPACED
MAT: #13 GA. STEEL

NOTICE TO PERSONS RECEIVING THIS DRAWING
THE TECHNICAL MATERIAL CORPORATION
PROPERTY OF THE TECHNICAL MATERIAL CORPORATION
THIS DRAWING IS ISSUED IN CONFIDENCE FOR ENGINEERING INFORMATION ONLY AND MAY NOT BE REPRODUCED OR USED TO MANUFACTURE ANYTHING WITHOUT THE WRITTEN PERMISSION FROM THE TECHNICAL MATERIAL CORPORATION. THIS DRAWING IS LOANED FOR YOUR ASSISTANCE AND IS SUBJECT TO RECALL AT ANY TIME.

TRAK-15	MODEL	PROJECT NO.	USED ON	DATE
MS-2107				
DESCRIPTION	CABINET, Elec. Equipment			
STOCK NO.	107110			
DATE	10-1-48			
DESIGNER	TOLGAMER			
DRAWN BY	J. J. J.			
CHECKED BY	J. J. J.			
DATE	10-1-48			
APPROVED BY	J. J. J.			
DATE	10-1-48			
HEAT TREAT SPEC.				
PRINT APPROVAL				
SHEET 9 of 7	MS-2107			

MS-2107