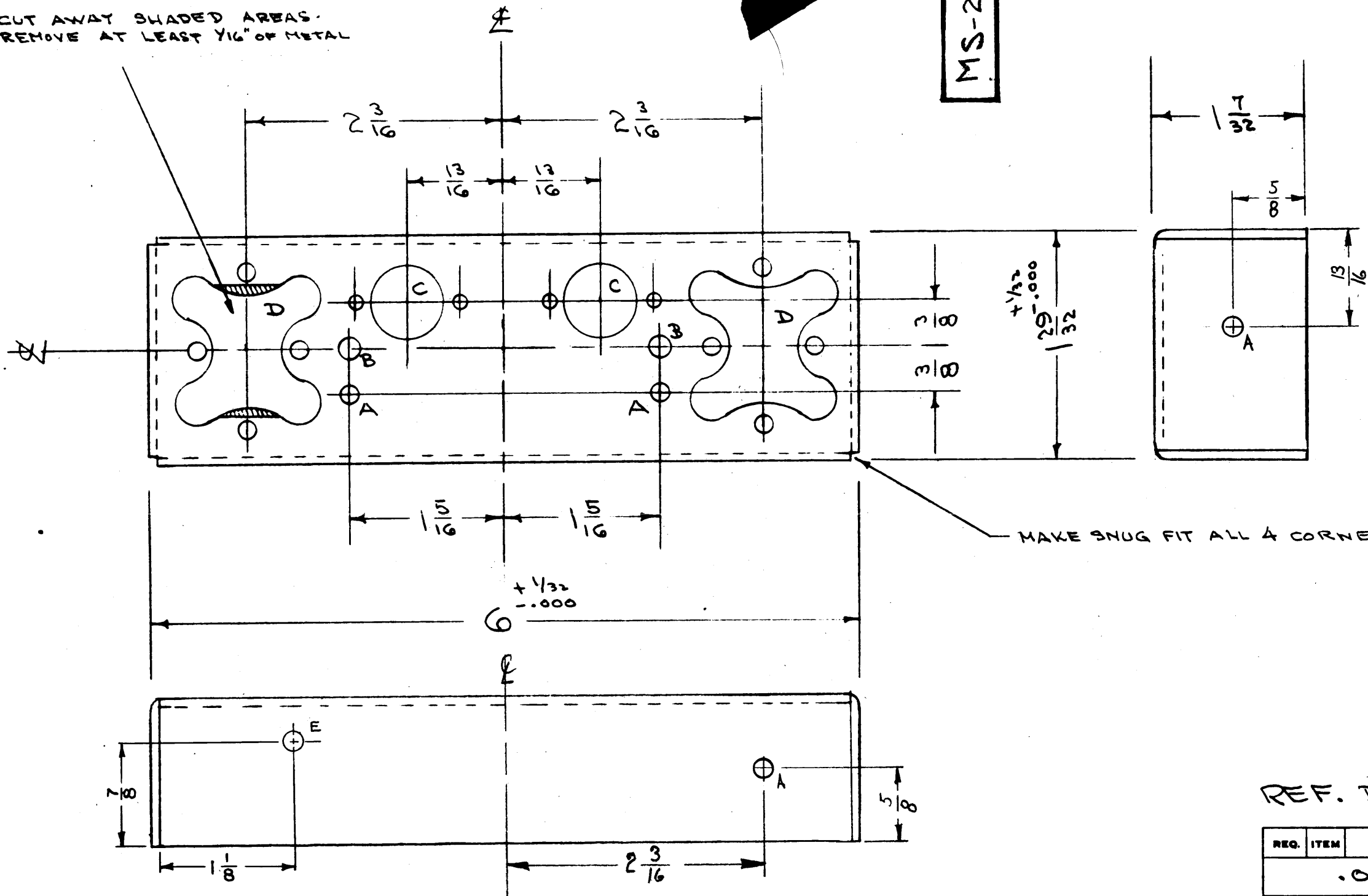


IF IT IS FOUND DESIRABLE TO CHANGE ANY TOLERANCE OR OTHER DETAIL SPECIFIED ON THIS DRAWING NOTIFY THE PURCHASER PROMPTLY.

MAXIMUM ALLOWABLE TOLERANCES HAVE BEEN DETERMINED AND DEVIATIONS WILL BE CAUSE FOR REJECTION. REMOVE ALL BURRS AND SHARP EDGES

CUT AWAY SHADED AREAS. REMOVE AT LEAST 1/16" OF METAL

MS-2100 A



- A - 5/32 (.156) D. 4 HOLES
- B - 3/16 (.187) D. 2 "
- C - 1/8 (.125) D. 2 REQ.
- 2 REQ.
- D - SEE DWG. MS-119 2 REQ.
- E - 9/64 DIA 1 REQ.

NOTICE TO PERSONS RECEIVING THIS DRAWING

THE TECHNICAL MATERIEL CORPORATION claims proprietary right in the material disclosed herein. This drawing is issued in confidence for engineering information only and may not be reproduced or used to manufacture anything shown hereon without permission from THE TECHNICAL MATERIEL CORPORATION to the user. This drawing is loaned for mutual assistance and is subject to recall at any time.

Property of:
THE TECHNICAL MATERIEL CORPORATION
MAMARONECK, NEW YORK

REF. DWG. MS-624, LD-709

REQ.	ITEM	PART NO.	DESCRIPTION	SYMBOL
		.064	THE TECHNICAL MATERIEL CORP. MAMARONECK, NEW YORK	
		ALUMINUM	CHASSIS	
		52S H32	2nd CONVERTER	GPR
			WFS	
			DRAWN	ELEC. DES. APP. MECH. DES. APP.
			CHE KED	FINAL APPROVAL
			5-404 YELLOW IRIDITE	
			FINISH & SPEC. NO.	

A - E HOLE ADDED	24.65	-	bs	gpr
DATE	BY	CHKD	APP'D	DATE

1	GPR-90RXD			3-8-60
REQ. PER UNIT	MODEL	PROJECT NO.	ASSY. NO.	DATE

MS-2100 A