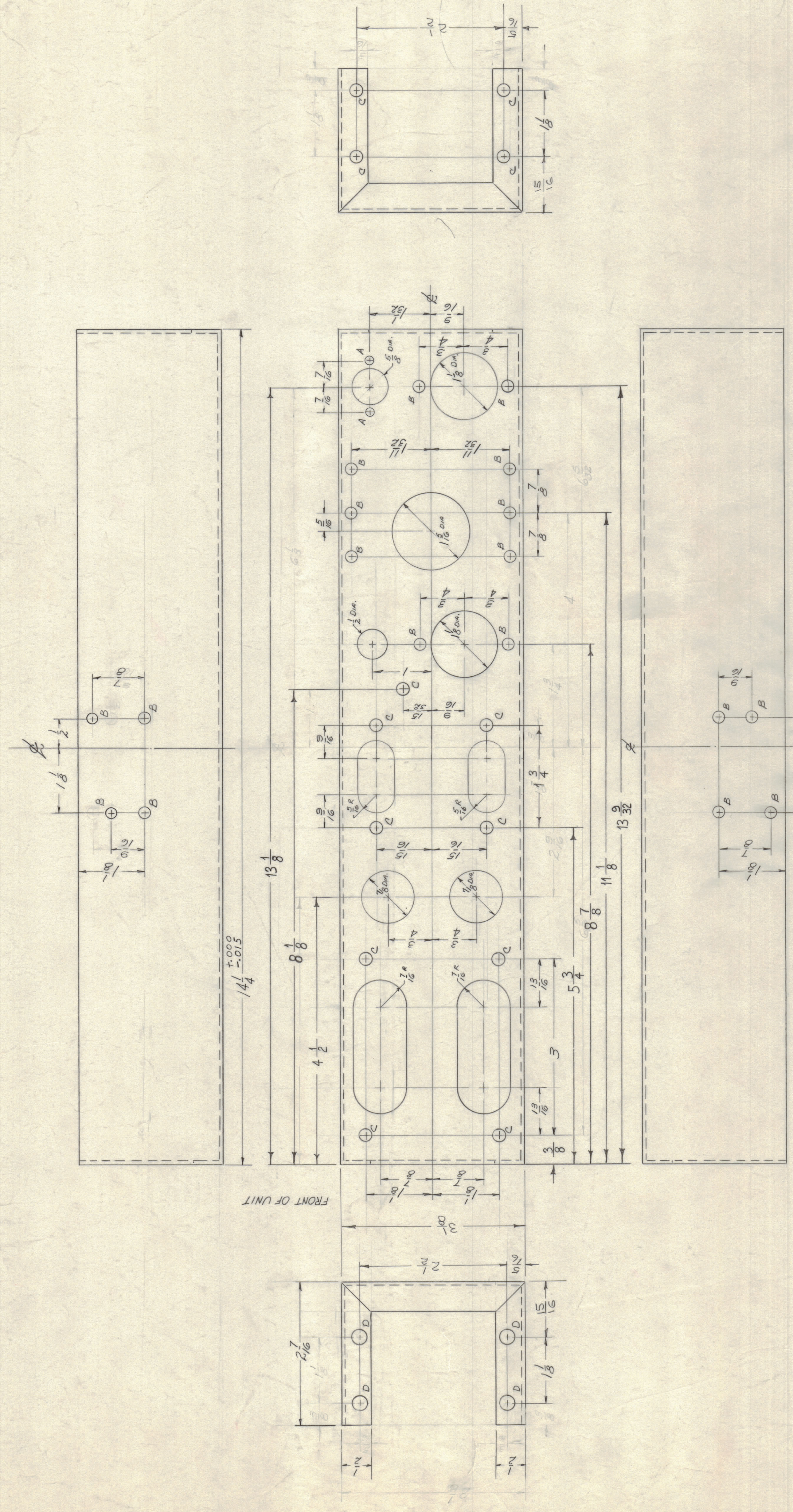


LEGEND

- A - $\frac{5}{64}$ (.141) DIA. 2 REQ.
- B - $\frac{1}{64}$ (.172) DIA. 18 REQ.
- C - $\frac{13}{64}$ (.203) DIA. 13 REQ.
- D - $\frac{1}{4}$ (.250) DIA. 4 REQ.



NOTICE TO PERSONS RECEIVING THIS DRAWING
 THE TECHNICAL MATERIEL CORPORATION claims proprietary right in the material disclosed herein. This drawing is issued in confidence for engineering information only and may not be reproduced or used in any way without the written permission of THE TECHNICAL MATERIEL CORPORATION. This drawing is loaned for initial assistance and is subject to recall at any time.

Property of:
 THE TECHNICAL MATERIEL CORPORATION
 MANHATTAN, NEW YORK

| | | |
|------------------------|---|--------|
| REF - TMC # LD-412 (4) | DESCRIPTION | SYMBOL |
| REQ. ITEM | PART NO. | |
| 064 TRUCK | THE TECHNICAL MATERIEL CORP. MANHATTAN, NEW YORK | |
| STOCK SIZE | CHASSIS, RIGHT UNIT | |
| MATERIAL | ALUMINUM | |
| 5052-H32 | FS. CONVERTER - MODEL CFA | |
| TYPE & TEMPER | 300 | |
| HEAT TREAT. SPEC. | 4B | |
| IRIDITE 5404 | CHECKED | |
| FINISH & SPEC. NO. | MS-280 | D |

IT IS SOLELY RESPONSIBLE TO CHANGE ANY TOLERANCE OR OTHER DETAIL SPECIFIED ON THIS DRAWING NOTIFY THE PURCHASER PROMPTLY.
 MAXIMUM ALLOWABLE TOLERANCES HAVE BEEN DETERMINED AND SHOWN IN THIS DRAWING.
 REMOVE ALL BURRS AND SHARP EDGES.

| | | | | |
|--------------------------------|--|----------|---------|-----------|
| DATE | 10-28-50 | 3307 | 48 | 1 |
| ISSUE | 1 | REVISION | 1 | |
| CHANGED FROM | 5-12-50 | 4 | SUR | B |
| TO | 5-12-50 | 4 | SUR | B |
| DATE | EN. NO. | DRAWN | CHECKER | ENG. APP. |
| SCALE: | 1/2" = 1" | | | |
| DRILL, PUNCH, COMMERCIAL STOCK | SIZES AND MANUFACTURERS TOLERANCES ARE NOT INCLUDED. | | | |