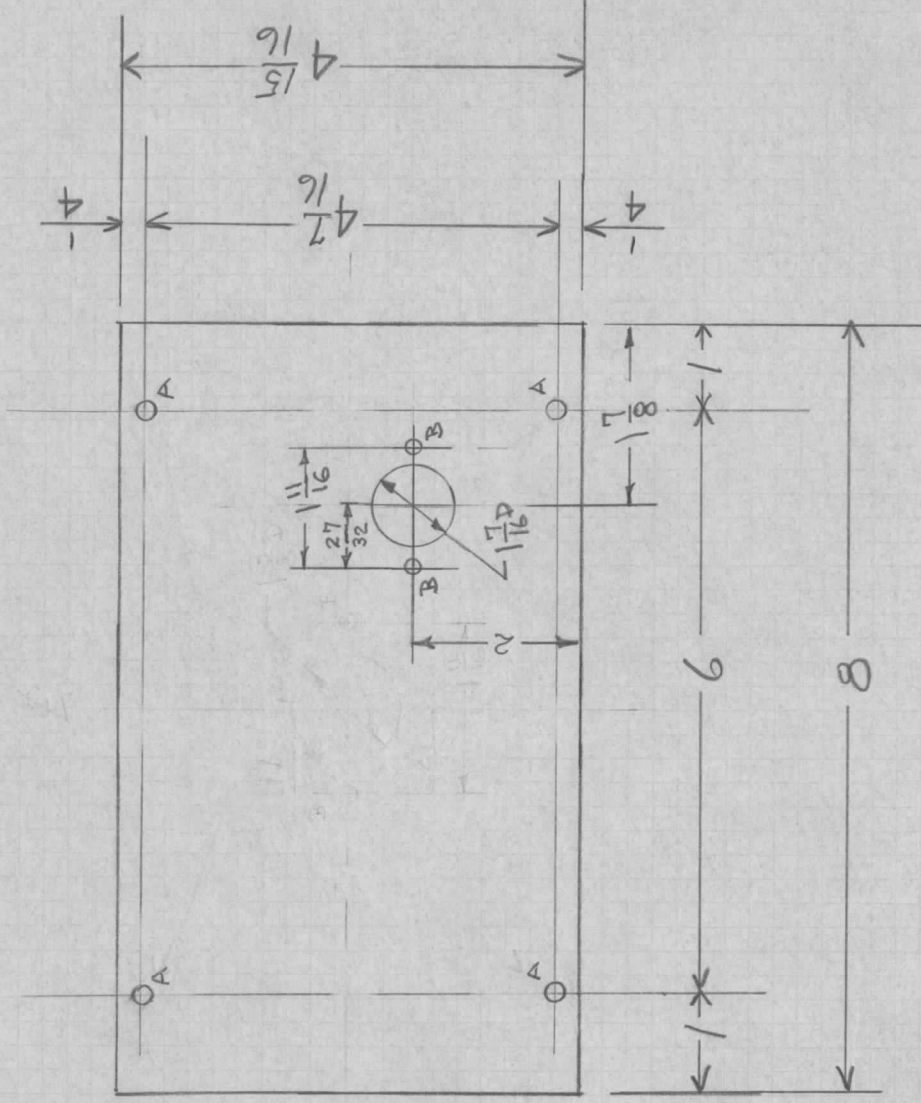


NOTE: STAMP COVER.

CAUTION

REMOVE JUMPER ACROSS R1
FOR 220 VOLTS AC INPUT



A = 1/16" DIA - 4 REQ.
 B = 5/32" DIA - 2 REQ.

USE: .031 24ST ALUM
 ALKALI ETCH & LACQUER
 ONE PIECE PER UNIT
 MAT SIZE: 4 15/16 X 8

UNLESS OTHERWISE SPECIFIED DIMENSIONS ARE IN INCHES AND INCLUDE CHEMICALLY APPLIED OR PLATED FINISHES	
DECIMALS	FRACTIONS
.X ± .05	± 1/64
.XX ± .01	ANGLES
.XXX ± .005	± 0° 30'

CUT HERE
 GUARANTEED
 2-66

SUPERCEDES AMS 089

A	II-130 MFG. HOLES ADDED	3/3/54	A.J. JUDZ
SYM	DESCRIPTION	DATE	CHK APP

DATE 4-13-51

DRN. P.B.

CHKD. JAW

APPD. *[Signature]*

COVER PLATE
 POWER CONTROL PANEL
 MODEL DCP

THE TECHNICAL MATERIEL
 CORPORATION
 MAMARONECK, NEW YORK

SHEET

OF

NO. MS-241A

MS-241