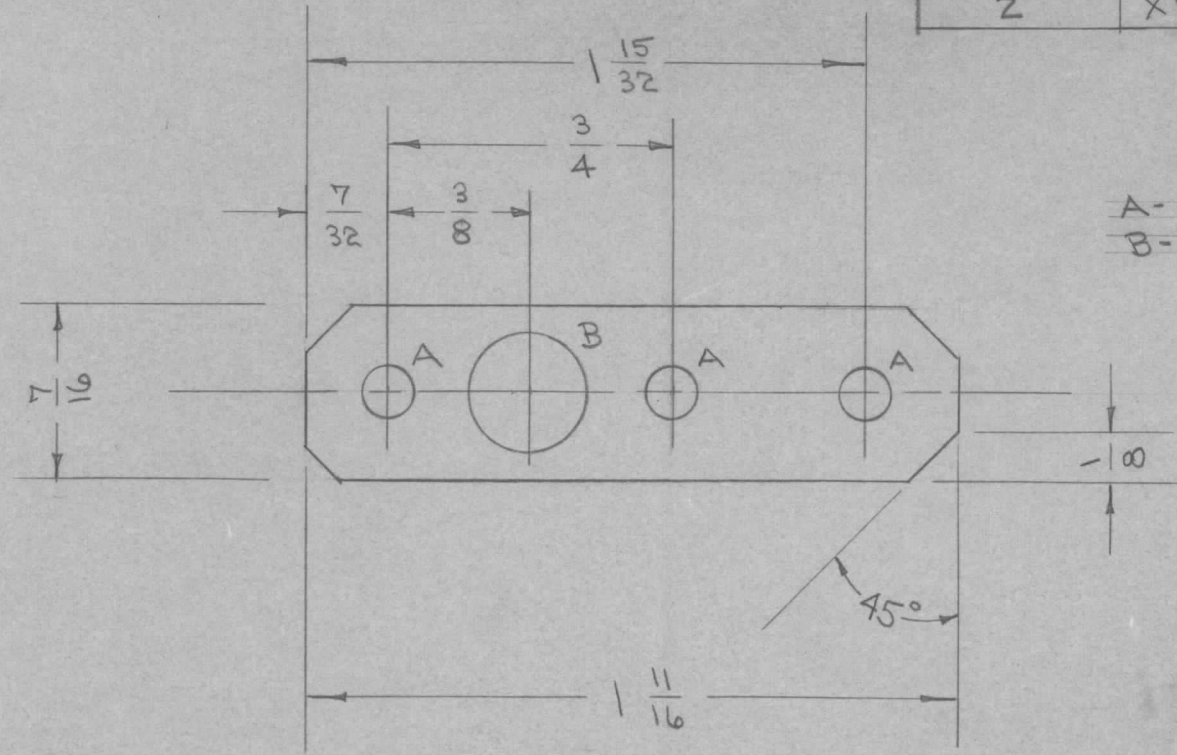


IF IT IS FOUND DESIRABLE TO CHANGE ANY TOLERANCE OR OTHER DETAIL SPECIFIED ON THIS DRAWING NOTIFY THE PURCHASER PROMPTLY.

MS-229 B

MAXIMUM ALLOWABLE TOLERANCES HAVE BEEN DETERMINED AND DEVIATIONS WILL BE CAUSE FOR REJECTION. REMOVE ALL BURRS AND SHARP EDGES

USED ON				
AMT. PER UNIT	MODEL	PROJECT NO.	ASS'Y. NO.	DATE
2	XFK		A-355	2-5-53



A - 1/8 (.125) D. 3 HOLES REQ.  
 B - 5/16 (.312) D. 1 HOLE REQ.

UNLESS OTHERWISE SPECIFIED DIMENSIONS ARE IN INCHES AND INCLUDE CHEMICALLY APPLIED OR PLATED FINISHES

DECIMALS	FRACTIONS
.X ± .05	± 1/64
.XX ± .01	ANGLES ± 0° 30'
.XXX ± .005	

REQ.	ITEM	PART NO.	DESCRIPTION	SYMBOL
		.032	THE TECHNICAL MATERIEL CORP.	
		STOCK SIZE	MAMARONECK, NEW YORK	
		ALUMINUM	LINK, SHAFT	
		MATERIAL		
		WEIGHT PER PC.		
		24 ST	C.I.D.D. 2-5-53	
		TYPE & TEMPER	A.S.J.	
			DRAWN	ELEC. DES. APP. MECH. DES. APP.
			CHECKED	FINAL APPROVAL
		HEAT TREAT. SPEC.		
		S404 IRIDITE		
		FINISH & SPEC. NO.		

B	1	"A" WAS 9/64 (.140) D.	12/23/53	1769	AB	Jue	EMN
A	1	S404-IRIDITE WAS S101-CAUSTIC DIP	12/7/53	1001	CP		EMN
ISSUE	ITEM	CHANGED FROM	DATE	CN. NO.	DRAFTS	CHECKER	ENG. APP.
TOLERANCES		SCALE 1/16"					
ALL OTHERS	DEC. DIM. ±	DRILL, PUNCH, COMMERCIAL STOCK SIZES AND MANUFACTURERS TOLERANCES ARE NOT INCLUDED.					
	FRAC. DIM. ± 1/64						
	ANGULAR DIM. ±						

MS-229 B