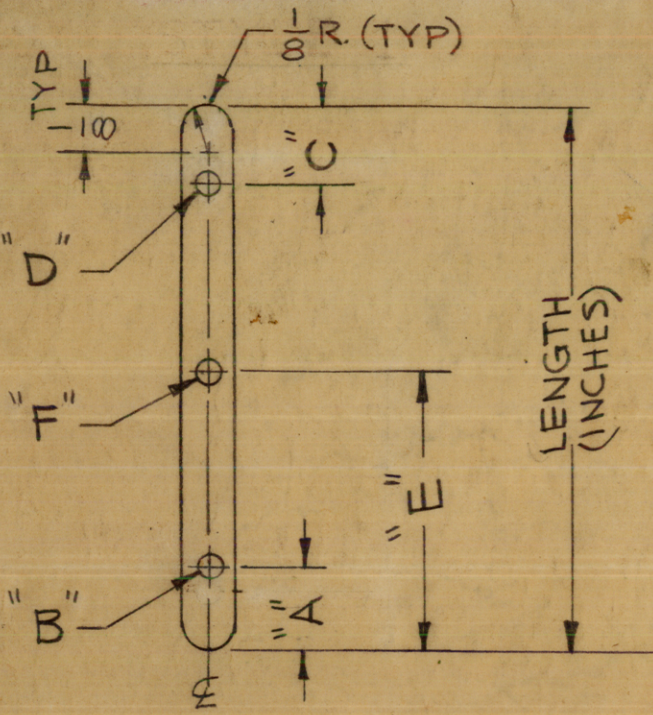


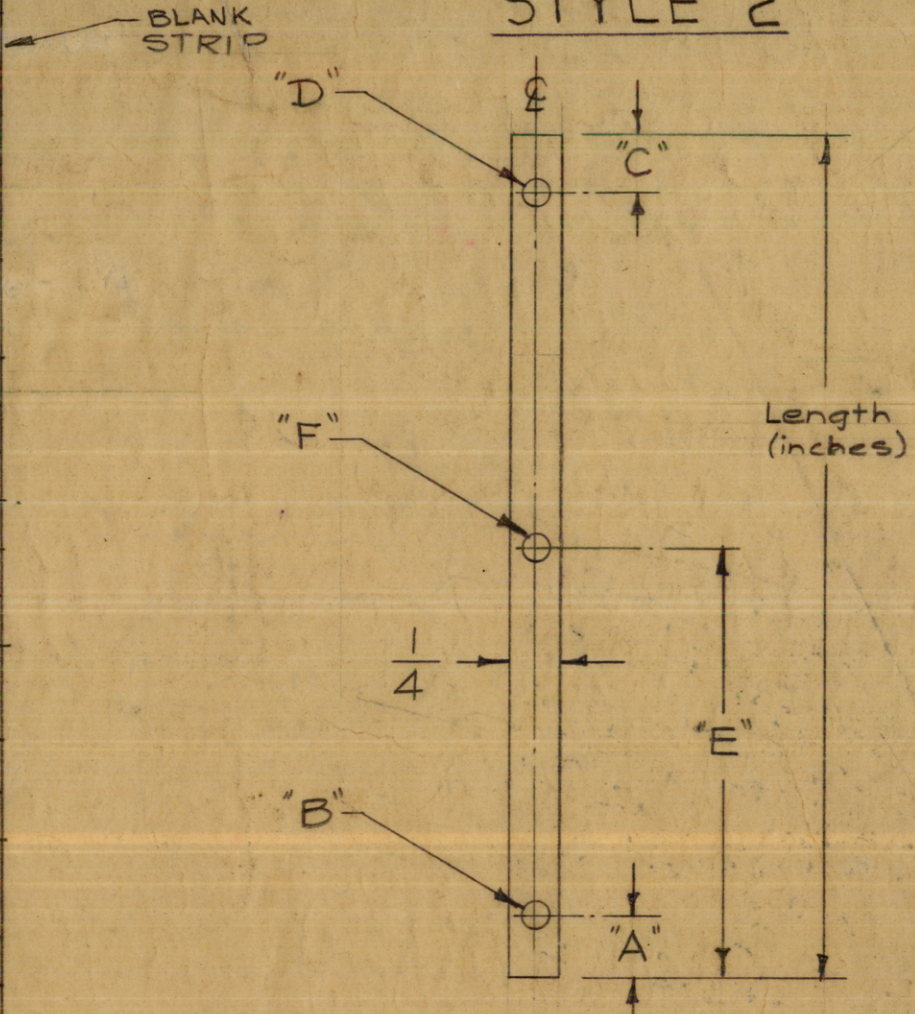
MS-203 T

STYLE 1



STANDARD DRAWING

STYLE 2



TMC NO.	"A" DIM.	"B" DIAM.	"C" DIM.	"D" DIAM.	"E" DIM.	"F" DIAM.	STYLE
MS-203-1	—	N.H.	—	N.H.	—	N.H.	2
MS-203-2	3/16	11/64	—	N.H.	—	N.H.	2
MS-203-3	3/16	9/64	—	N.H.	—	N.H.	2
MS-203-4	3/16	9/64	—	N.H.	—	N.H.	2
MS-203-5	3/16	9/64	—	N.H.	—	N.H.	2
MS-203-6	3/16	11/64	3/16	11/64	—	N.H.	2
MS-203-7	3/16	11/64	—	N.H.	1 1/16	11/64	2
MS-203-8	3/16	5/32	3/16	5/32	—	N.H.	2
MS-203-9	1/4	11/64	—	N.H.	—	N.H.	2
MS-203-10	1/4	5/32	1/4	3/32	—	N.H.	1
MS-203-11	1/8	11/64	1/8	11/64	—	N.H.	1
MS-203-12	1/8	11/64	1/8	11/64	1"	11/64	1
MS-203-13	3/16	5/32	3/16	5/32	1"	5/32	1
MS-203-14	1/4	11/64	1/8	11/64	—	NH	1
MS-203-15	3/16	5/32	3/16	5/32	—	NH	1
MS-203-16	3/16	11/64	3/16	11/64	—	NH	1

NOTICE TO PERSONS RECEIVING THIS DRAWING

THE TECHNICAL MATERIEL CORPORATION claims proprietary right in the material disclosed hereon. This drawing is issued in confidence for engineering information only and should not be reproduced or used to manufacture or shown hereon without permission from THE TECHNICAL MATERIEL CORPORATION to the user. This drawing is loaned for mutual assistance and is to be recalled at any time.

THE TECHNICAL MATERIEL CORPORATION
MAMARONECK, NEW YORK

TYPE DESIGNATION TO BE AS FOLLOWS:

MS-203-1-4.500 N
 TMC DWG. NO. DRILLING PLAN CODE (See Chart) LENGTH (inches) FINISH SUFFIX CODE (USE ONLY WHEN NO FINISH IS REQ'D)

* NOTE: WHEN PART NO. DOES NOT HAVE FINISH SUFFIX CODE, S245 WILL BE STANDARD FINISH.

NOTE - THE LENGTH REQ. WILL BE FOUND ON THE MATERIAL LIST WHERE THIS ITEM IS USED.

ISSUE ITEM	CHANGED FROM	DATE	CH. NO.	DRAFTS	CHECKER	ENG. APP.
T	ADD-15E-16	7-8-68	18975	JH	JCB	FB
S	ADD-14 ADD "N" FINISH SUFFIX CODE & * NOTE.	12-9-66	17432	RME	JCB	JCB
R	ON TYPE DESC. "LENGTH" WAS 4.50	6-28-66	CLERICAL CHG.	CDL	JCB	JCB
P	MS-203-13 ADDED	3-8-66	15926	WFW	JCB	JCB
N	MATL. WAS COMM SOFT	10/12/65	14950	M.V.	JCB	JCB
M	MS-203-12 ADDED -11 08D WAS 5/32	9/27/65	14890	M.V.	JCB	JCB

NOTE
N.H. = No Hole

DEC. DIM. ±	FRAC. DIM. ±	ANGULAR DIM. ±
TOLERANCES		
SCALE:		
MAXIMUM ALLOWABLE TOLERANCES HAVE BEEN DETERMINED AND ANY DEVIATIONS WILL BE CAUSE FOR REJECTION. REMOVE ALL BURRS AND SHARP EDGES		

REQ. PER UNIT	PROJECT NO.	ASS'Y. NO.	DATE
151	ATS		

REQ. ITEM	PART NO.	DESCRIPTION	SYMBOL
.025 THK.		THE TECHNICAL MATERIEL CORP. MAMARONECK, NEW YORK	
COPPER		LEAD, CONNECTING, 1/4" WIDE	
OFHC			
TYPE & TEMPER	HEAT TREAT. SPEC.	DRAWN	CHECKED
*S245 Silver Plate .0003			
FINISH & SPEC. NO.	ELEC. DES. APP.	MECH. DES. APP.	
			MS-203 T