

IF IT IS FOUND DESIRABLE TO CHANGE ANY TOLERANCE OR OTHER DETAIL SPECIFIED ON THIS DRAWING NOTIFY THE PURCHASER PROMPTLY.

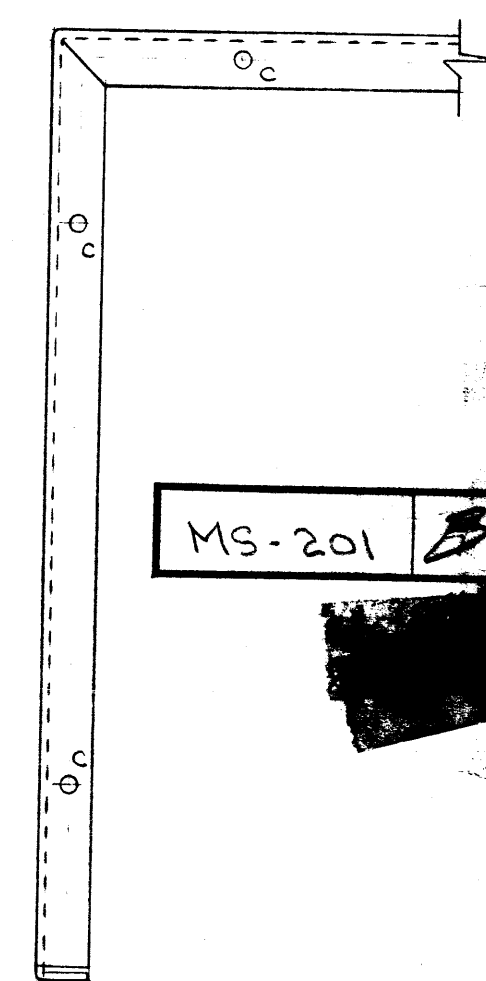
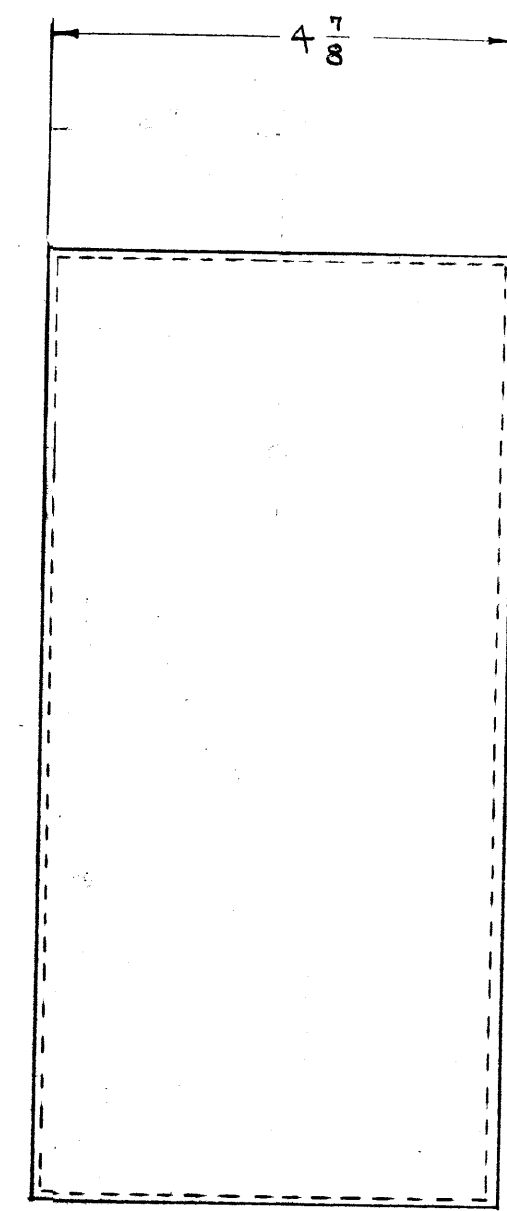
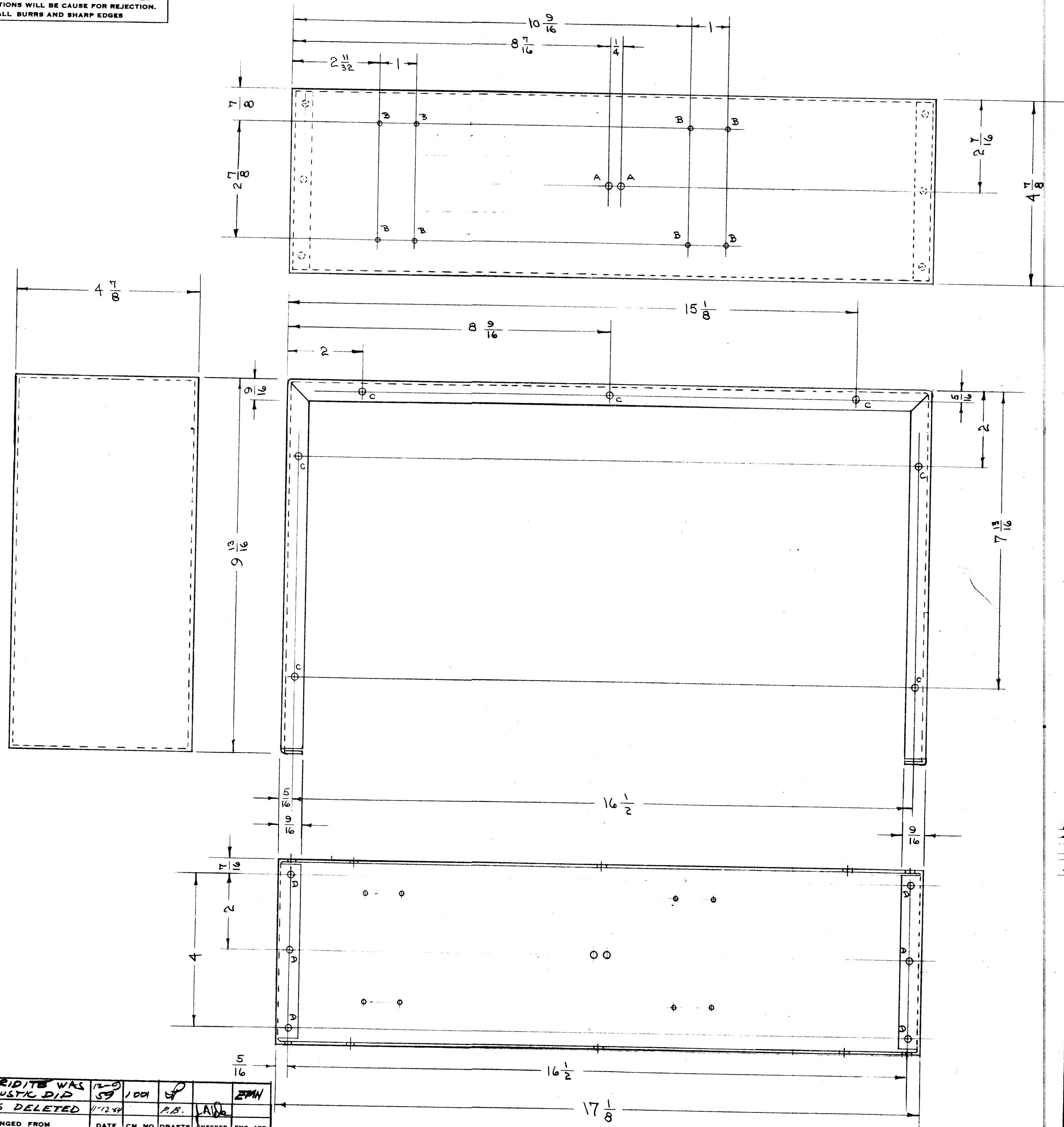
MAXIMUM ALLOWABLE TOLERANCES HAVE BEEN DETERMINED AND DEVIATIONS WILL BE CAUSE FOR REJECTION. REMOVE ALL BURRS AND SHARP EDGES

**NOTICE TO PERSONS RECEIVING THIS DRAWING**

THE TECHNICAL MATERIEL CORPORATION claims proprietary right in the material disclosed hereon. This drawing is issued in confidence for engineering information only and may not be reproduced or used to manufacture anything shown hereon without permission from THE TECHNICAL MATERIEL CORPORATION to the user. This drawing is loaned for mutual assistance and is subject to recall at any time.

Property of:

THE TECHNICAL MATERIEL CORPORATION  
MAMARONECK, NEW YORK



MS-201 B

- A-5/32(.156) D. 2 HOLES REQ.
- B-1/16(.0156) D. 8 HOLES REQ.
- C-3/16(.1875) D. 14 HOLES REQ.
- D-1/4(.25) D. 6 HOLES REQ.

|            |             |                                      |                |   |        |         |             |
|------------|-------------|--------------------------------------|----------------|---|--------|---------|-------------|
| B          | 1           | 5804-IRIDITE WAS<br>SI O CAUSTIC DID | 12-0           | 1001  | P      | EPH     |             |
| A          | 1           | 2 HOLES DELETED                      | 11-12-54       |   | P.B.   | LAD     |             |
| ISSUE ITEM |             | CHANGED FROM                         | DATE           | CN. NO.   | DRAFTS | CHECKER | ENG. APP.   |
| TOLERANCES |             |                                      |                |   |        |         | SCALE: 1/8" |
| ALL OTHERS | DEC. DIM. ± | FRAC. DIM. ± 1/4                     | ANGULAR DIM. ± | DRILL, PUNCH, COMMERCIAL STOCK<br>SIZES AND MANUFACTURERS<br>TOLERANCES ARE NOT INCLUDED. |        |         |             |

|         |             |           |         |
|---------|-------------|-----------|---------|
| FFR-DP  | 104         | A-334     | 1-21-53 |
| MODEL   | PROJECT NO. | ASBY. NO. | DATE    |
| USED ON |             |           |         |

|                    |                |  |                 |
|--------------------|----------------|--|-----------------|
| REQ. ITEM          | PART NO.       | DESCRIPTION  | SYMBOL          |
|                    | .064           | THE TECHNICAL MATERIEL CORP.<br>MAMARONECK, NEW YORK |                 |
| STOCK SIZE         |                | CHASSIS FRAME  |                 |
| MATERIAL           | WEIGHT PER PC. |  |                 |
| ALUMINUM           |                |  |                 |
| 52S-H 32           |                |  |                 |
| TYPE & TEMPER      |                | C.D.D. 1-21-53                                       |                 |
|                    |                | DRAWN  | ELEC. DES. APP. |
|                    |                | CHECKED  | FINAL APPROVAL  |
| HEAT TREAT. SPEC.  |                |  |                 |
| 3404 YEL-IRIDITE   |                |  |                 |
| FINISH & SPEC. NO. |                |  |                 |
|                    |                |  | MS-201 B        |