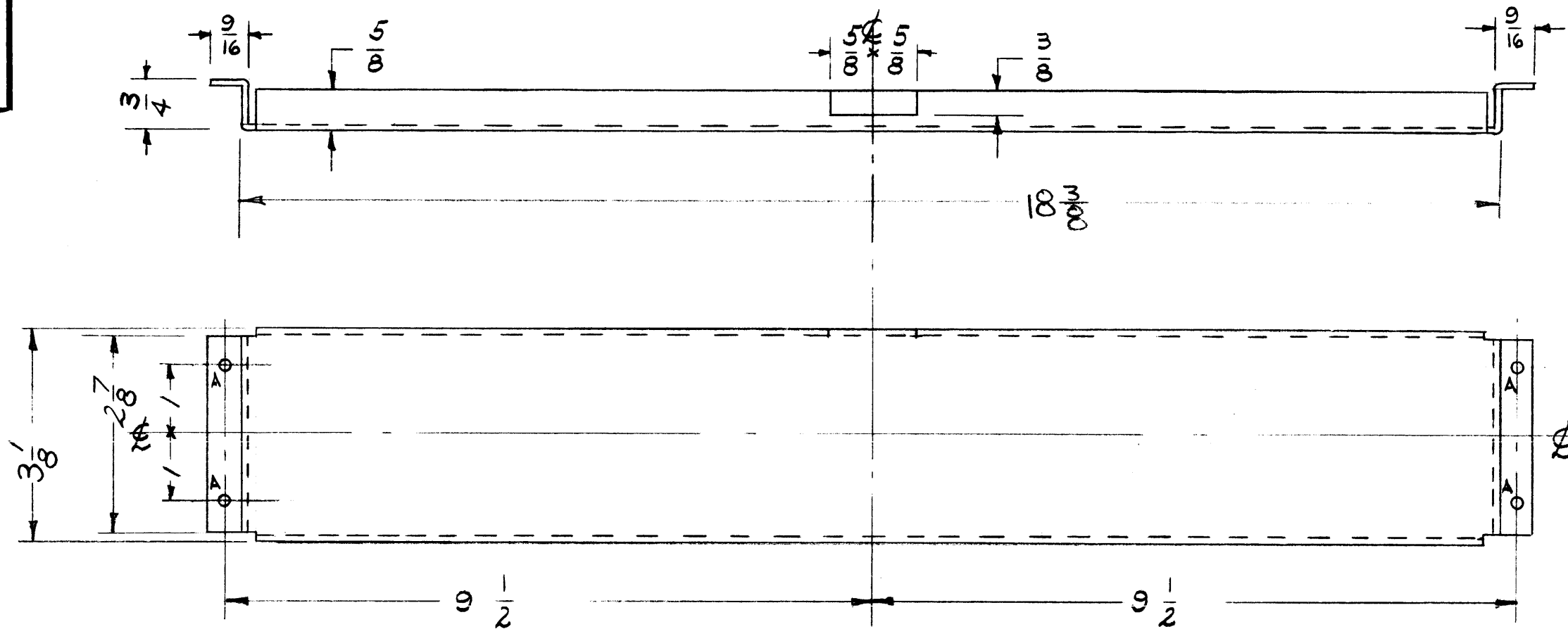


MS-2096
A



A-5/32 (.156) D.

4 REQ.

FINISH - ALL SURFACES
 S404 - YELLOW IRIDITE
 S114 - ZINC CHROMATE PRIMER
 S115 - TMC SMOOTH GREY ENAMEL
 OR PRIME & PAINT TO CUST. SPEC.

NOTICE TO PERSONS RECEIVING THIS DRAWING

THE TECHNICAL MATERIEL CORPORATION claims proprietary right in the material disclosed hereon. This drawing is issued in confidence for engineering information only and may not be reproduced or used to manufacture anything shown hereon without permission from THE TECHNICAL MATERIEL CORPORATION to the user. This drawing is loaned for mutual assistance and is subject to recall at any time.

Property of:

THE TECHNICAL MATERIEL CORPORATION
 MAMARONECK, NEW YORK

ISSUE	ITEM	CHANGED FROM	DATE	CH. NO.	DRAFTS	CHECKER	ENG. APP.
A	1	DELETED 19 1/2 DIM.	5/23/61	4941		JCB	SAM
TOLERANCES		SCALE: 1/2					
DEC. DIM. ±		MAXIMUM ALLOWABLE TOLERANCES HAVE BEEN DETERMINED AND ANY DEVIATIONS WILL BE CAUSE FOR REJECTION. REMOVE ALL BURRS AND SHARP EDGES					
FRAC. DIM. ±							
ANGULAR DIM. ±							

1	GPT-40K	AP-103	3-7-60
REQ. PER UNIT	MODEL	PROJECT NO.	ASS'Y. NO.
USED ON			

REQ. ITEM	PART NO.	DESCRIPTION	SYMBOL
.081		THE TECHNICAL MATERIEL CORP. MAMARONECK, NEW YORK	
ALUMINUM		SHIELD, SAFETY P.S. FRAME	
5052-H32		10RILLE	2.3
TYPE & TEMPER	HEAT TREAT. SPEC.	DRAWN	CHECKED
SEE NOTE			
FINISH & SPEC. NO.	ELEC. DES. APP.	MECH. DES. APP.	MS-2096 A