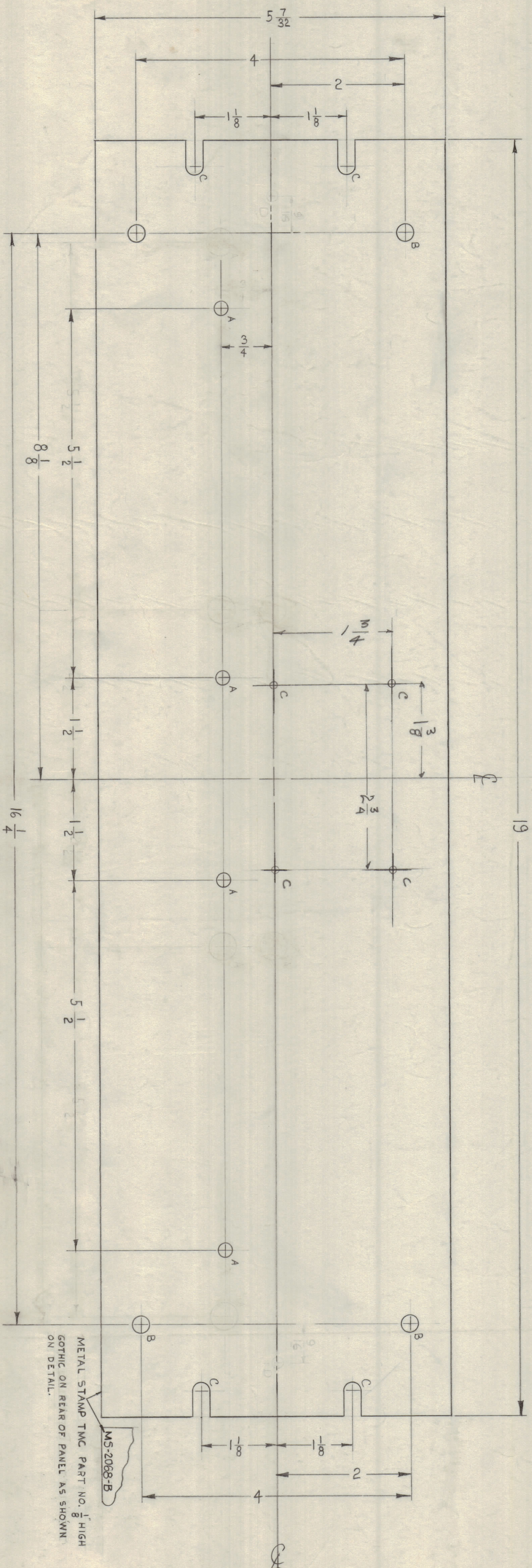
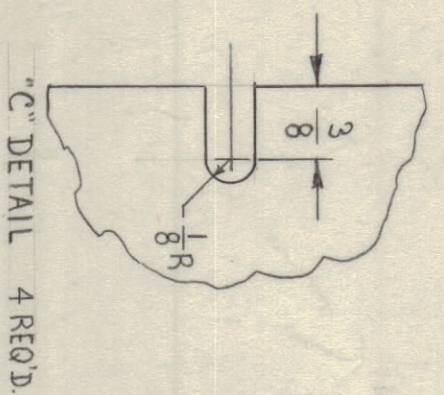


IF IT IS FOUND DESIRABLE TO CHANGE ANY TOLERANCE OR OTHER DETAIL SPECIFIED ON THIS DRAWING NOTIFY THE DRAWING ENGINEER IMMEDIATELY BY RETURNING TO THE OFFICE OF THE DRAWING ENGINEER. MAXIMUM ALLOWABLE TOLERANCES HAVE BEEN DETERMINED AND DEVIATIONS WILL BE CAUSE FOR REJECTION. REMOVE ALL BURRS AND SHARP EDGES.

NOTICE TO PERSONS RECEIVING THIS DRAWING
 THE TECHNICAL MATERIEL CORPORATION claims property right in the material used herein. This drawing is issued in confidence for engineering information only and may not be reproduced or used to manufacture anything, SOCIAL MATERIEL CORPORATION. This drawing is loaned for mutual assistance and is subject to recall at any time.
 Property of:
 THE TECHNICAL MATERIEL CORPORATION
 MANHATTAN, NEW YORK



A ~ 3/16 (1.203) D. 4 REQ.D.
 B ~ 1/4 (1.250) D. 4 REQ.D.
 C ~ #1 Drill 4 REQ.D.
 D ~ 3/16 DIA 2 REQ.D.

MACHINING -
 1 - LATERAL BOW OF PANEL MUST BE KEPT TO .031 TOLERANCE.
 2 - MILL ALL EDGES.
 3 - HOLES MUST BE DRILLED.
 4 - PANEL MUST BE FREE OF ALL MACHINING MARKS GOUGES & SCRATCHES.
 IF NECESSARY SAND FRONT OF PANEL WITH NO 120 GRIT SANDPAPER.

Metal Stamp TMC Part No. 1/2 High Gothic on Rear of Panel as shown on Detail.

FINISH -
 S404 YELLOW IRIDITE
 S114 ZINC CHROMATE PRIMER FRONT &
 S115 ZINC SMOOTH GRAY ENAMEL 3 EDGES ONLY

M5-2068 B

B	1	2-D HOLES 3/16 DIA DELETED	08/24/5167	J.S.A.	ELL
A	1	2 HOLES ADDED	2/14/514127	RUL	MS
ISSUE ITEM		CHANGED FROM	DATE	CM NO	DRYTR
TOLERANCES		SCALE: FULL	DRILL PUNCH COMMERCIAL STOCK SIZES AND MANUFACTURERS TOLERANCES ARE NOT INCLUDED.		
ALL DEC DIM ± 1/64		OTHERS ANGULAR DIM ±			

REQ UNIT	CHV-1	MODEL	PROJECT NO.	USED ON	ASBY NO.	DATE
						2-3-50

REQ. ITEM	PART NO.	DESCRIPTION	SYMBOL
3/16 THK		THE TECHNICAL MATERIEL CORP.	
STOCK SIZE		MANHATTAN, NEW YORK	
MATERIAL	ALUMINUM	FRONT PANEL, MACHINING	
WEIGHT FABRIC	2024-T3		
TYPE & TEMPER			
HEAT TREAT. SPEC.			
SEE NOTE			
FINISH & SPEC. NO.			
DRAWN	MS	ELECTRICAL APP.	MS-2068
CHECKED	MS	MECH. DES. APP.	MS-2068
		FINAL APPROVAL	B