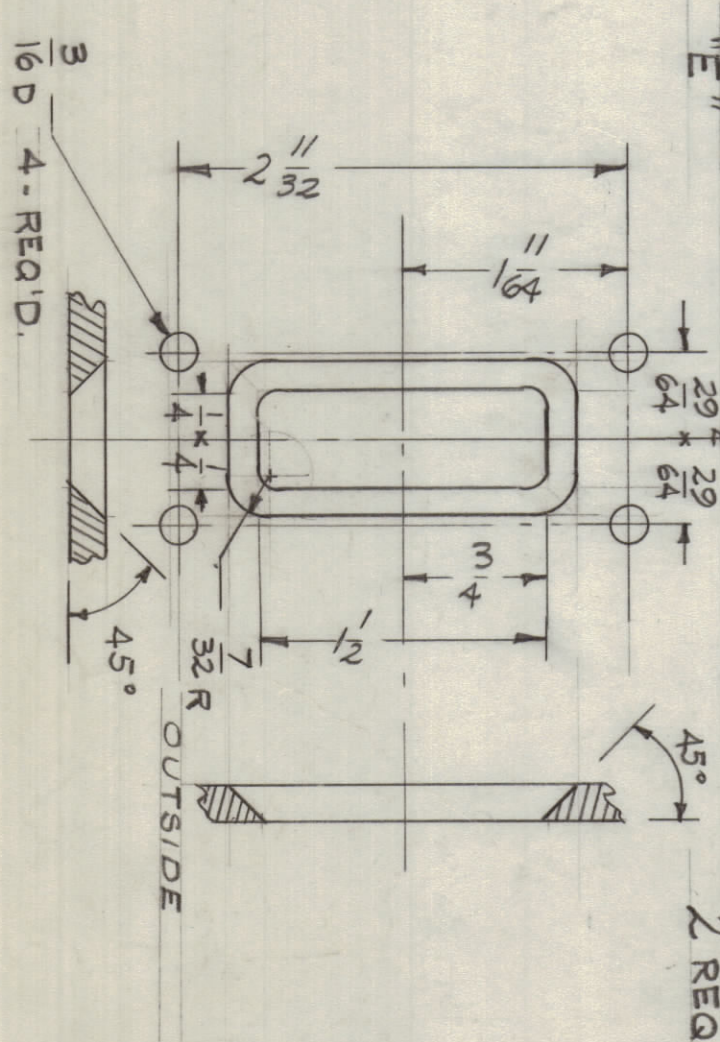


HOLE S

A - (.125) 1/8	1
B - (.218) 7/32	1
C - (.375) 3/8	2
D - (.562) 9/16	2

REQ'D.

1	1
2	2
2	2



FINISH NOTE:

S-404 YEL. IRIDITE
 S-114 ZINC CHROMATE PRIMER } FRONT EDGES ONLY
 S-115 SMOOTH GREY ENAMEL }
 OR PRIME & PAINT TO CUSTOMER SPEC.

REF. (B) LD-700 ENGRAVING

3/16 THK.
 ALUMINUM
 2024-73
 MACHINING, FRONT PANEL
 ANTENNA TUNER

NOTICE TO PERSONS RECEIVING THIS DRAWING

THE TECHNICAL MATERIAL CORPORATION
 PROPERTY OF THE TECHNICAL MATERIAL CORPORATION
 MANHATTAN, NEW YORK

UNLESS OTHERWISE SPECIFIED
 DIMENSIONS ARE IN INCHES AND DECIMALS
 THEREOF ARE TO BE TO UNLESS OTHERWISE
 SPECIFIED TOLERANCES ARE AS FOLLOWS

1	AT-101	GPT-40K	2/26/60	SEE FINISH NOTE	MS-2063 A
---	--------	---------	---------	-----------------	-----------