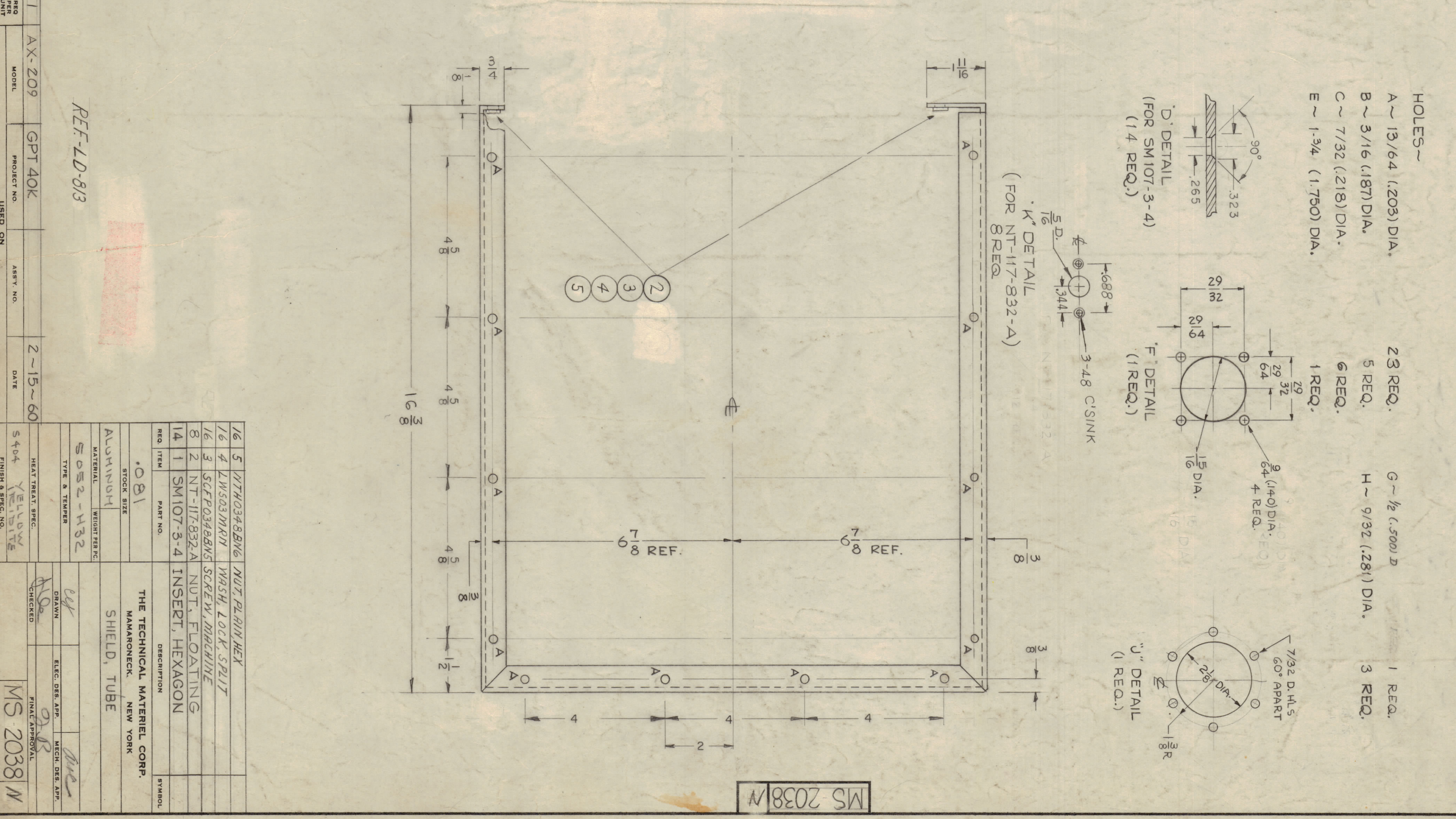
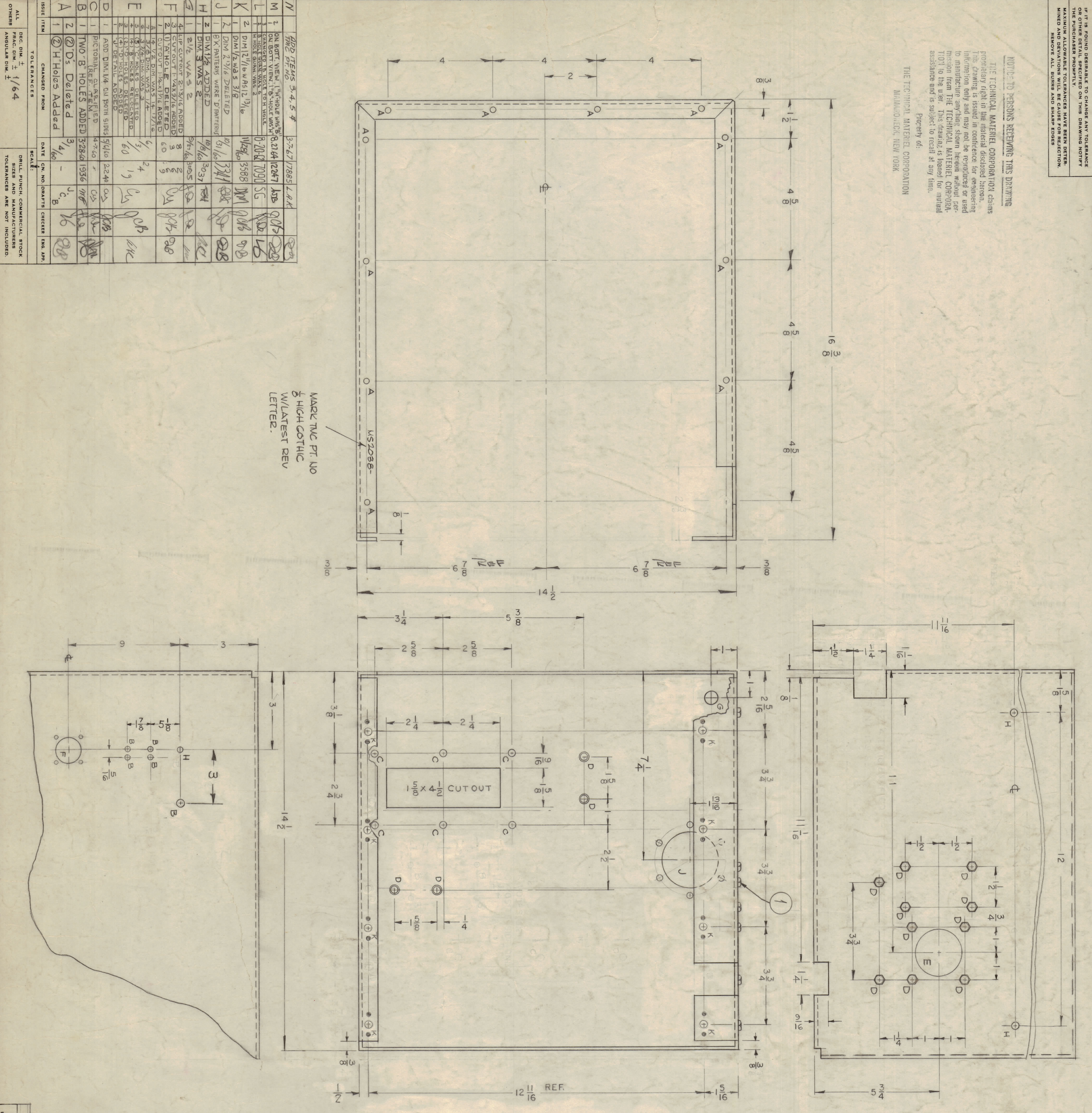


IT IS FOUND DESIRABLE TO CHANGE ANY DIMENSIONS AND TOLERANCES TO CONFORM WITH THE STANDARD PRACTICES OF THE PURCHASER PROBABLY. MAXIMUM ALLOWABLE TOLERANCES HAVE BEEN DETERMINED AND DIVISION WILL BE CAREFUL FOR REFLECTION. MAMARONECK, NEW YORK

NOTE TO PERSONS RECEIVING THIS DRAWING
 THE TECHNICAL MATERIAL CORPORATION claims proprietary right in the material disclosed herein. This drawing is issued in confidence for engineering information only and may not be reproduced or used to manufacture anything shown herein without permission from THE TECHNICAL MATERIAL CORPORATION to the user. This drawing is loaned for mutual assistance and is subject to recall at any time.
 Property of:
 THE TECHNICAL MATERIAL CORPORATION
 MAMARONECK, NEW YORK

ISSUE ITEM	CHANGED FROM	DATE	CN. NO.	OPERATOR'S CHECKER	ENG. APPR.
A	1	2/1/60		J. B.	J. B.
B	2	3/1/60		J. B.	J. B.
C	1	4/7/60		J. B.	J. B.
D	1	4/7/60		J. B.	J. B.
E	1	6/0		J. B.	J. B.
F	1	6/0		J. B.	J. B.
G	1	6/0		J. B.	J. B.
H	1	6/0		J. B.	J. B.
I	1	6/0		J. B.	J. B.
J	1	6/0		J. B.	J. B.
K	1	6/0		J. B.	J. B.
L	1	6/0		J. B.	J. B.
M	1	6/0		J. B.	J. B.
N	1	6/0		J. B.	J. B.

MARK THIS PT. NO. $\frac{1}{2}$ HIGH GOTHIC W/LATEST REV LETTER.



- HOLES -
- A ~ 1.2031 DIA. 2.3 REQ.
 - B ~ 0.1875 DIA. 5 REQ.
 - C ~ 0.2181 DIA. 6 REQ.
 - E ~ 1.375 DIA. 1 REQ.
 - G ~ 0.5000 DIA. 1 REQ.
 - H ~ 0.2811 DIA. 3 REQ.

REQ. ITEM	DESCRIPTION	SYMBOL
16	5 NT103488BNG DUT. PL. BIN HEX	
16	4 LK503MNRN WASH. LOCK. SPLIT	
16	3 SETP0388BNS SCREW. MACHINE	
8	2 NT-117-832-A NUT. FLOATING	
14	1 SM107-3-4 INSERT. HEXAGON	

REF. NO.	PROJECT NO.	ASTY. NO.	DATE
1	AX-209	GPT 40K	2-15-60

HEAT TREAT SPEC.	FINISH & SPEC. NO.	HEAT TREAT SPEC.	FINISH & SPEC. NO.
5404	YELLOW	5404	YELLOW

DESIGNER	CHECKER	FINAL APPROVAL
W. B.	J. B.	J. B.

MS 2038 W