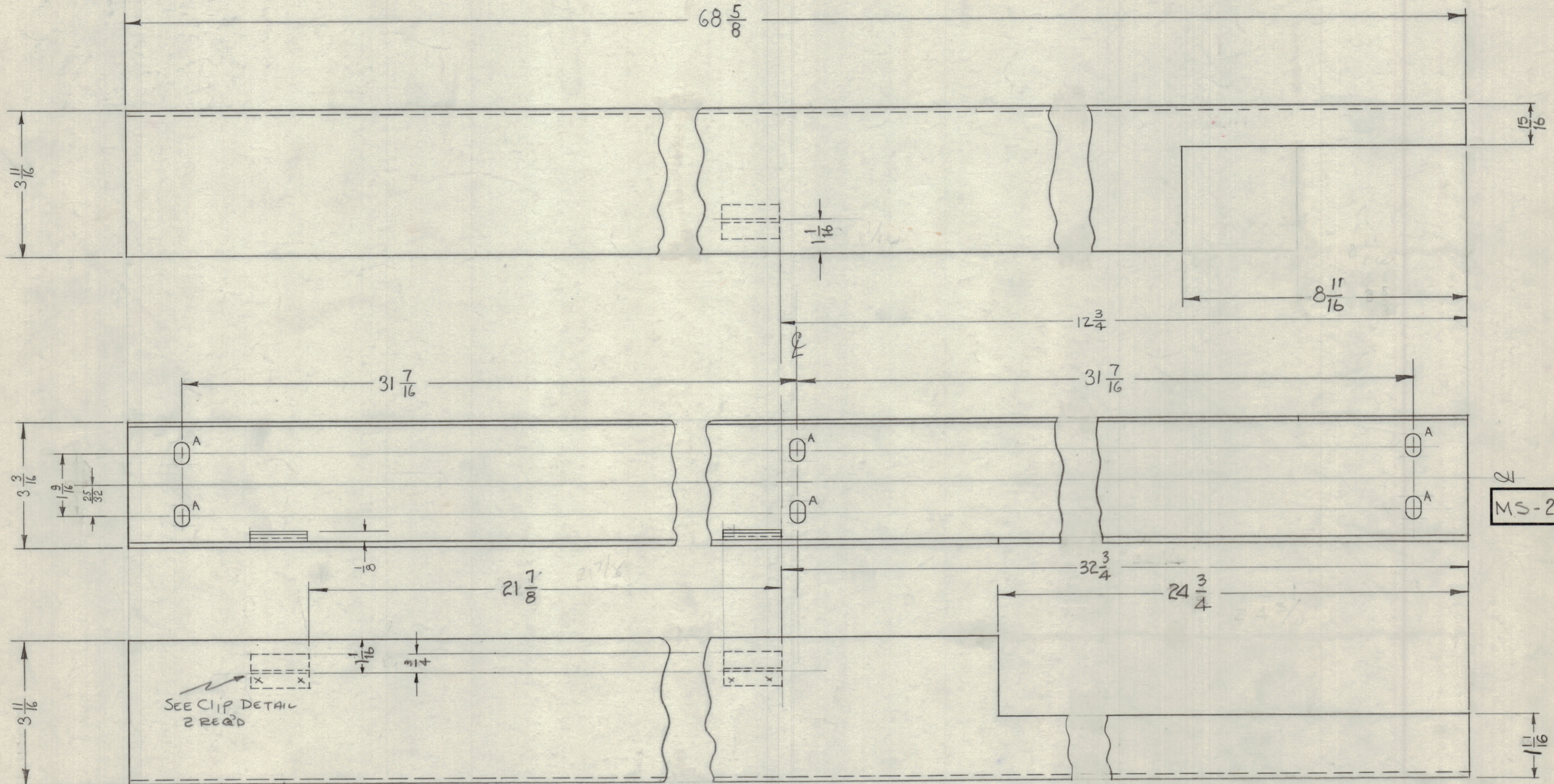


IF IT IS FOUND DESIRABLE TO CHANGE ANY TOLERANCE OR OTHER DETAIL SPECIFIED ON THIS DRAWING NOTIFY THE PURCHASER PROMPTLY.

MAXIMUM ALLOWABLE TOLERANCES HAVE BEEN DETERMINED AND DEVIATIONS WILL BE CAUSE FOR REJECTION. REMOVE ALL BURRS AND SHARP EDGES.

A ~ 1/4 x 3/16 SLOT 6 REQ'D

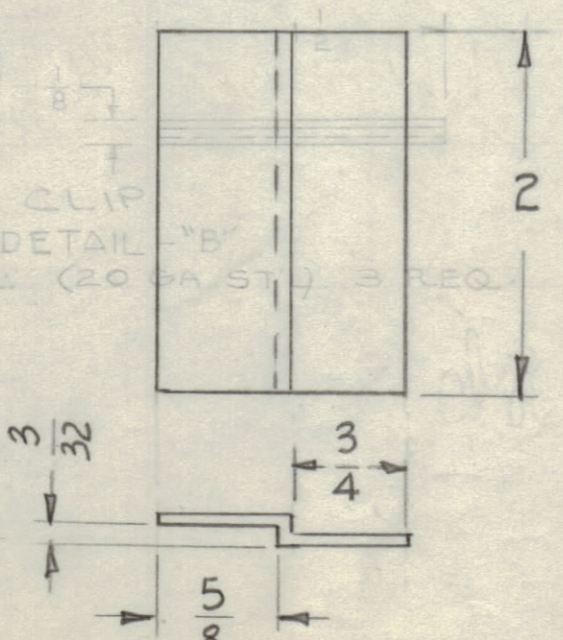


MS-2027 E

SEE CLIP DETAIL 2 REQ'D

FINISH:	MS-2027-1	MS-2027-2
S371 DEGREASING OF PLAIN STEEL PARTS		S520
S114 ZINC CHROMATE PRIMER	FRONT &	BLUE GRAY
S521-TEXTURED GRAY ENAMEL	EDGES ONLY	TEXTURED VINYL.

ISSUE	ITEM	CHANGED FROM	DATE	CH. NO.	DRAFTS	CHECKER	ENG. APP.
E	1	FINISH S521 WAS S115	5-31-66	16237	NGA	JCS	...
D	1	FINISH REVISED	1/4/68	10699
	4	Relocated Trim Strip	6/11/60	2433
	3	24 3/4 WAS 24 1/2					
	2	8 11/16 WAS 8 5/8					
	1	15/16 WAS 1"					
B	1	ADDED DETAIL "B"	1-26-60	2191
A	1	1-11/16 WAS 1-5/8	3-16-60	



TOLERANCES	SCALE: 1/2
ALL OTHERS	DEC. DIM. DRILL, PUNCH, COMMERCIAL STOCK SIZES AND MANUFACTURERS TOLERANCES ARE NOT INCLUDED.
	FRAC. DIM. ± 1/64
	ANGULAR DIM. ±

REQ. PER UNIT	MODEL	PROJECT NO.	ASSY. NO.	DATE
	Ax-214	GPT-40K		2-8-60
	USED ON			

REQ. ITEM	PART NO.	DESCRIPTION	SYMBOL
20 GAUGE		THE TECHNICAL MATERIEL CORP. MAMARONECK, NEW YORK	
STEEL		TRIM, FRONT - RIGHT SIDE	
MILD		PA FRAME	
TYPE & TEMPER		DRAWN	ELEC. DES. APP. MECH. DES. APP.
HEAT TREAT. SPEC.		CHECKED	FINAL APPROVAL
SEE NOTE			MS-2027 E
FINISH & SPEC. NO.			