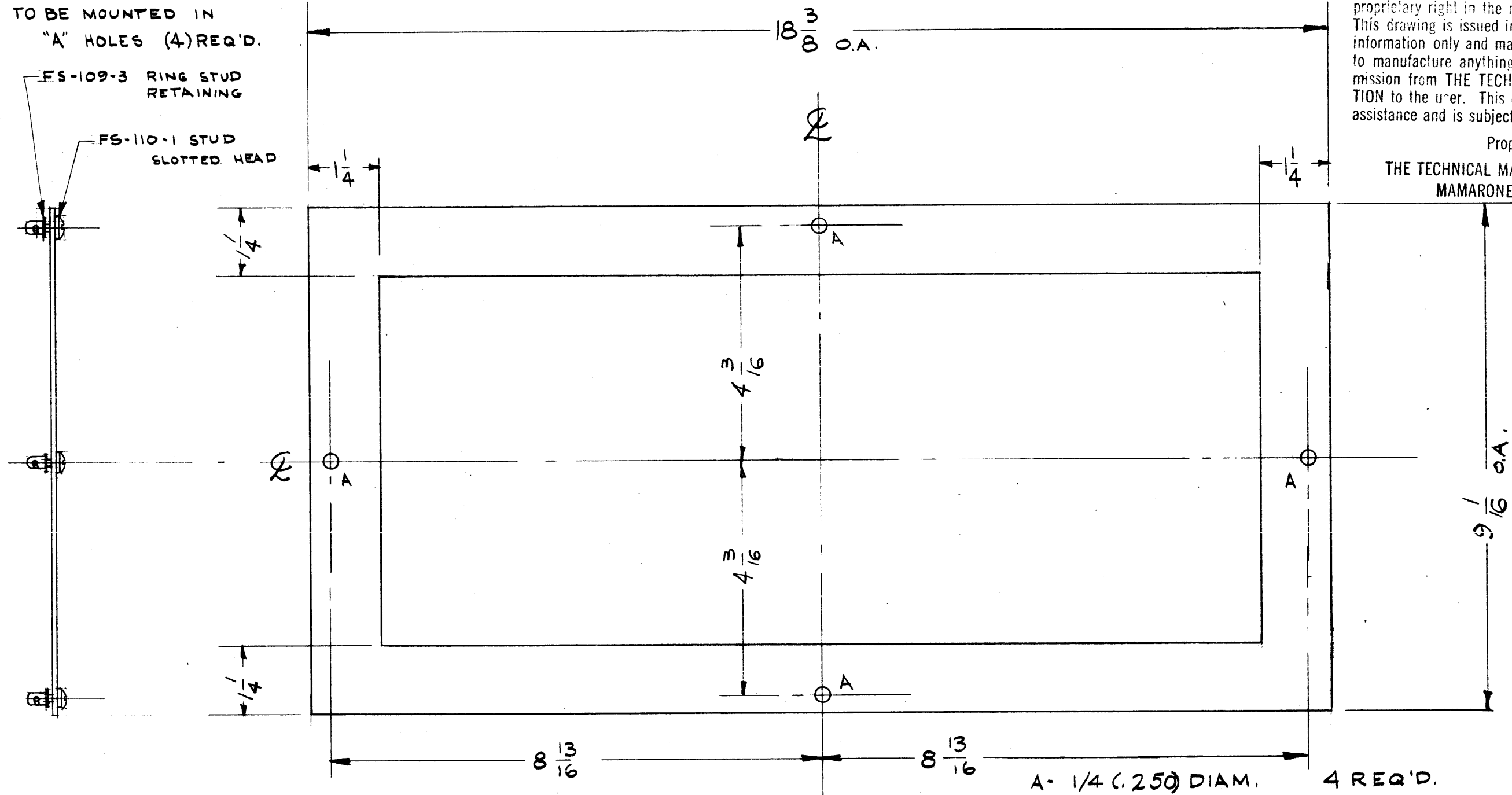


MS-1900 B

**NOTICE TO PERSONS RECEIVING THIS DRAWING**

THE TECHNICAL MATERIEL CORPORATION claims proprietary right in the material disclosed hereon. This drawing is issued in confidence for engineering information only and may not be reproduced or used to manufacture anything shown hereon without permission from THE TECHNICAL MATERIEL CORPORATION to the user. This drawing is loaned for mutual assistance and is subject to recall at any time.

Property of:  
**THE TECHNICAL MATERIEL CORPORATION**  
 MAMARONECK, NEW YORK



**FINISH NOTE:**  
 S114 - ZINC CHROMATE PRIMER  
 S520 - BLUE-GRAY TEXTURED VINYL PAINT.

ISSUE	ITEM	CHANGED FROM	DATE	CH. NO.	DRAFTS	CHECKER	ENG. APP.
B	6	FINISH WAS S404 4 S 220	6-17-64	11556	A.M.	<i>[Signature]</i>	<i>[Signature]</i>
A	2	MODEL WAS RAK	7-25-62	6938	F.S.	<i>[Signature]</i>	<i>[Signature]</i>
	1	S220 ADDED TO FINISH					

TOLERANCES		SCALE:	
DEC. DIM. ±		MAXIMUM ALLOWABLE TOLERANCES HAVE BEEN DETERMINED AND ANY DEVIATIONS WILL BE CAUSE FOR REJECTION.	
FRAC. DIM. ±		REMOVE ALL BURRS AND SHARP EDGES	
ANGULAR DIM. ±			

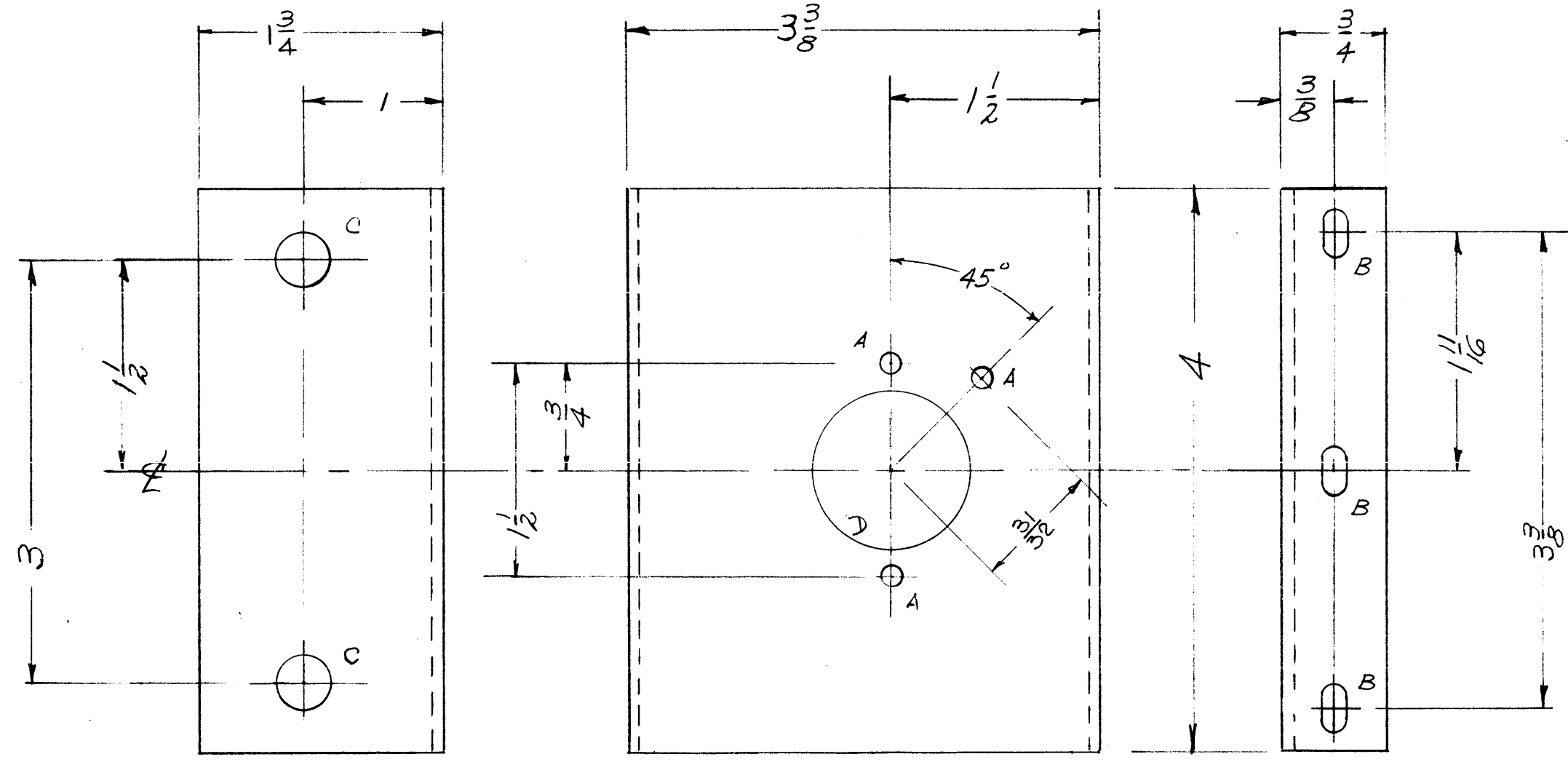
1	MS-2509			10-14-59
REQ. PER UNIT	MODEL	PROJECT NO.	ASS'Y. NO.	DATE
USED ON				

REQ. ITEM	PART NO.	DESCRIPTION	SYMBOL
	.064	THE TECHNICAL MATERIEL CORP. MAMARONECK, NEW YORK	
	ALUMINUM	COVER, TOP FILTER	
MATERIAL			
5052 H32		<i>[Signature]</i>	<i>[Signature]</i>
TYPE & TEMPER	HEAT TREAT. SPEC.	DRAWN	CHECKED
SEE NOTE		<i>[Signature]</i>	<i>[Signature]</i>
FINISH & SPEC. NO.		ELEC. DES. APP.	MECH. DES. APP.
			MS-1900 B

MS-1911

HOLE LEGEND

A - $\frac{5}{32}$ (.156) D.	3 REQ.
B - $\frac{11}{64} \times \frac{11}{32}$ SLOT	3 REQ.
C - $\frac{3}{8}$ (.375) D.	2 REQ.
D - $\frac{1}{8}$ (.125) D.	1 REQ.



NOTICE TO PERSONS RECEIVING THIS DRAWING

THE TECHNICAL MATERIEL CORPORATION claims proprietary right in the material disclosed hereon. This drawing is issued in confidence for engineering information only and may not be reproduced or used to manufacture anything shown hereon without permission from THE TECHNICAL MATERIEL CORPORATION to the user. This drawing is loaned for mutual assistance and is subject to recall at any time.

Property of:  
**THE TECHNICAL MATERIEL CORPORATION**  
 MAMARONECK, NEW YORK

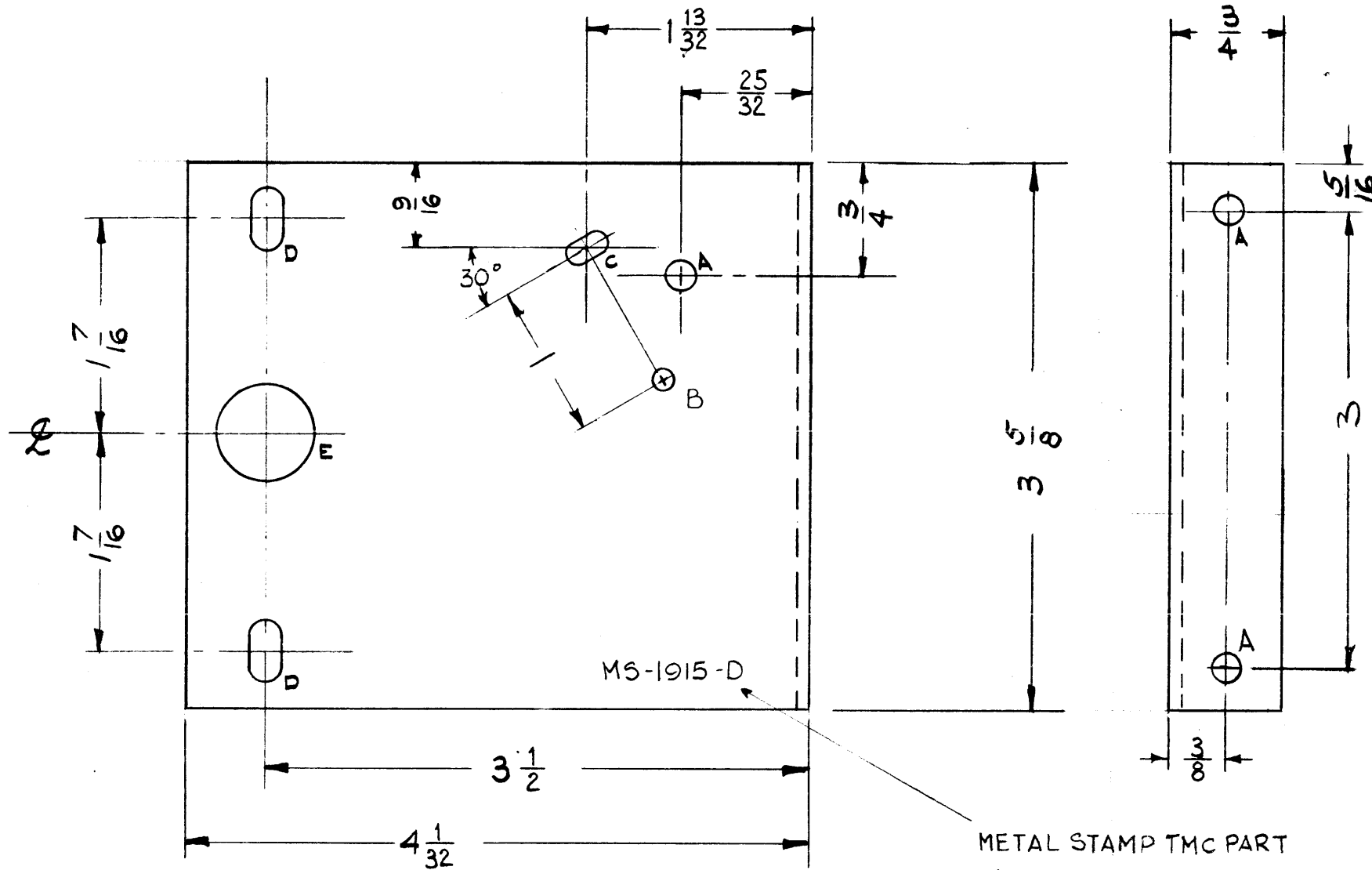
REF: LD-638

ISSUE ITEM	CHANGED FROM	DATE	CH. NO.	DRAFTS	CHECKER	ENG. APP.
A 1	ON 45° A° HOLE, $\frac{31}{32}$ DIM WAS 29/32	6-19-63	931A	<i>E</i>	<i>WJ</i>	<i>WJ</i>
TOLERANCES		SCALE: <i>1/64</i>				
DEC. DIM. ±		MAXIMUM ALLOWABLE TOLERANCES HAVE BEEN DETERMINED AND ANY DEVIATIONS WILL BE CAUSE FOR REJECTION.				
FRAC. DIM. ± <i>1/64</i>		REMOVE ALL BURRS AND SHARP EDGES				
ANGULAR DIM. ±						

1	AK-100			11-4-59
REQ. PER UNIT	MODEL	PROJECT NO.	ASS'Y. NO.	DATE
USED ON				

REQ. ITEM	PART NO.	DESCRIPTION	SYMBOL
	.081	THE TECHNICAL MATERIEL CORP. MAMARONECK, NEW YORK	
	STOCK SIZE		
	ALUMINUM	BRACKET, RELAY	
	MATERIAL		
5052-H32		11/4/59	<i>[Signature]</i>
TYPE & TEMPER	HEAT TREAT. SPEC.	DRAWN	CHECKED
5404 IRIDITE Yel.			<i>[Signature]</i>
FINISH & SPEC. NO.		ELEC. DES. APP.	MECH. DES. APP.
			MS-1911 A

MS-1915



- A - 3/16 (.187) DIA. 3 REQ'D.
- B - 9/64 (.140) DIA. 1 "
- C - 9/64 x 9/32 SLOT 1 "
- D - 1 1/64 x 1 1/32 SLOT 2 "
- E - 5/8 (.625) DIA. 1 "

NOTICE TO PERSONS RECEIVING THIS DRAWING

THE TECHNICAL MATERIEL CORPORATION claims proprietary right in the material disclosed hereon. This drawing is issued in confidence for engineering information only and may not be reproduced or used to manufacture anything shown hereon without permission from THE TECHNICAL MATERIEL CORPORATION to the user. This drawing is loaned for mutual assistance and is subject to recall at any time.

Property of:

THE TECHNICAL MATERIEL CORPORATION  
MAMARONECK, NEW YORK

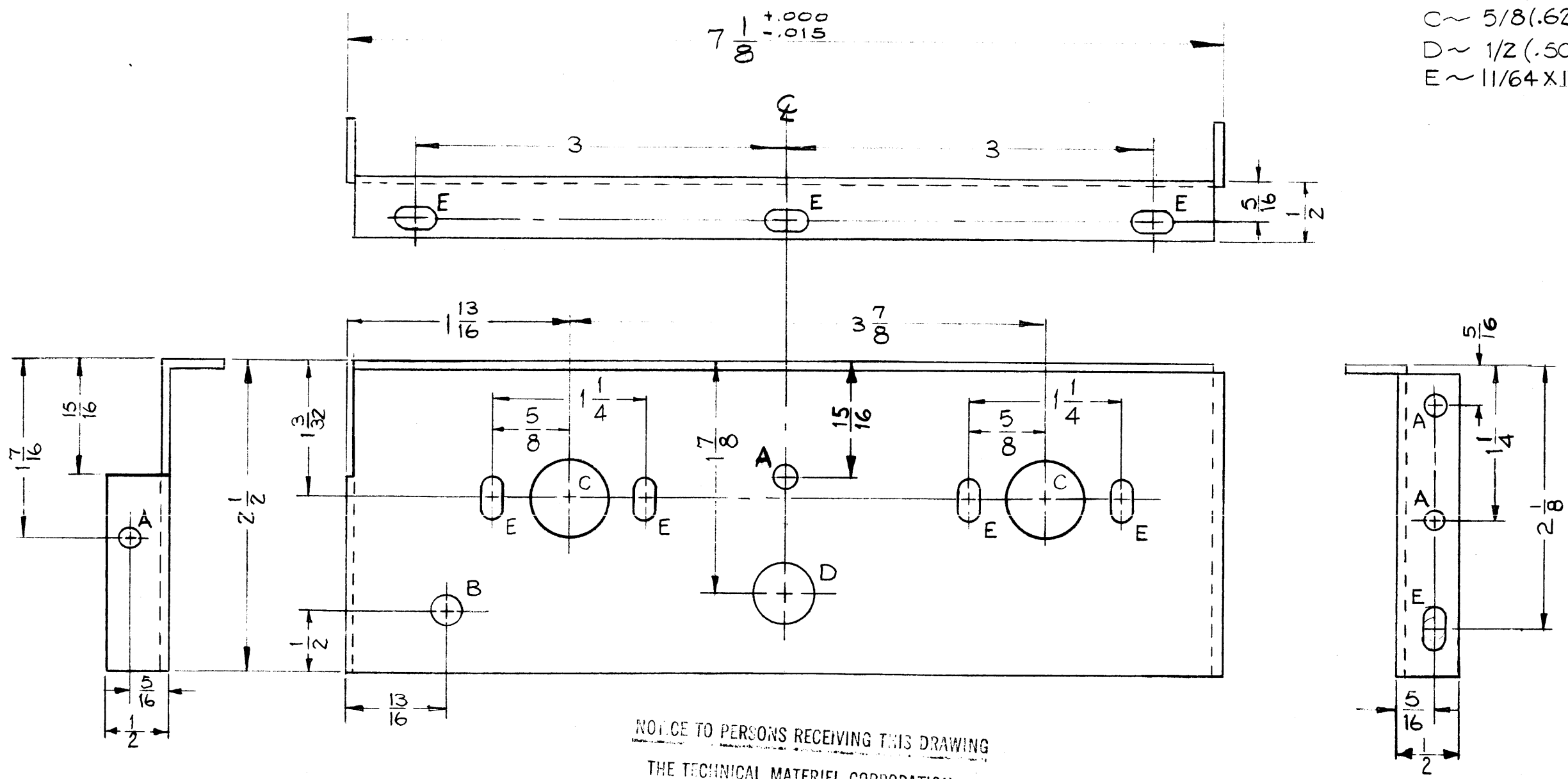
D	1	Ø WAS 13/64 X 13/32 SLOT	1-9-62	6157	LG	<i>[Signature]</i>
C	1	"B" HOLE REDIMENSIONED	11-17-61	5891	G.O.K	<i>[Signature]</i>
B	5	3/4 LIP REVERSED	2-3-61	4052	M.H.F.	<i>[Signature]</i>
	4	DIM. 1 3/32 WAS 1/2				
	3	DIM. 25/32 WAS 7/8				
	2	DIM. 3 1/2 WAS 3 19/32				
A	1	DIM. 4 1/32 WAS 4 1/8	12-1-59	1002	DM	LG
	2	DIM. 3 19/32 WAS 3 5/8				
A	1	DIM 3 WAS 2				<i>[Signature]</i>

ISSUE	ITEM	CHANGED FROM	DATE	CH. NO.	DRAFTS	CHECKER	ENG. APP.
TOLERANCES		SCALE: <del>1/8" = 1"</del>					
DEC. DIM. ±		MAXIMUM ALLOWABLE TOLERANCES HAVE BEEN DETERMINED AND ANY DEVIATIONS WILL BE CAUSE FOR REJECTION.					
FRAC. DIM. ± 1/64		REMOVE ALL BURRS AND SHARP EDGES					
ANGULAR DIM. ±							

1	RFC-1			2-3-61
1	RFB-1			11-13-59
1	RFD-1			11-13-59
REQ. PER UNIT	MODEL	PROJECT NO.	ASS'Y. NO.	DATE
USED ON				

REQ. ITEM	PART NO.	DESCRIPTION	SYMBOL
	.081	THE TECHNICAL MATERIEL CORP.	
	STOCK SIZE	MAMARONECK, NEW YORK	
	ALUMINUM	REAR SWITCH BRACKET	
MATERIAL			
	5052-H32	<i>[Signature]</i>	<i>[Signature]</i>
TYPE & TEMPER	HEAT TREAT. SPEC.	DRAWN	CHECKED
5404 - IRIDITE		<i>[Signature]</i>	<i>[Signature]</i>
FINISH & SPEC. NO.	ELEC. DES. APP.	MECH. DES. APP.	
			MS-1915 D

HOLES		REQ'D.
A	~ 1/64(.171) Dia.	4
B	~ 1/4 (.250) "	1
C	~ 5/8(.625) "	2
D	~ 1/2 (.500) "	1
E	~ 1/64 X 1/8 X 32 SLOT	8



**NOTICE TO PERSONS RECEIVING THIS DRAWING**

THE TECHNICAL MATERIEL CORPORATION claims proprietary right in the material disclosed hereon. This drawing is issued in confidence for engineering information only and may not be reproduced or used to manufacture anything shown hereon without permission from THE TECHNICAL MATERIEL CORPORATION to the user. This drawing is loaned for mutual assistance and is subject to recall at any time.

Property of:  
THE TECHNICAL MATERIEL CORPORATION  
MAMARONECK, NEW YORK

ISSUE	ITEM	CHANGED FROM	DATE	CH. NO.	DRAFTS	CHECKER	ENG. APP.
E	1	(1) "A" HOLE ADDED	5-22-61	4916	WAF	WAF	JFM
D	2	(4) "E" Slots Added	1-26-61	3975	DJM	JCB	JCB
C	1	"C" Holes were 5/16(.312) DIA					
C	2	THREE "E" HOLES ADDED	12-20-60	376A	WAF	JCB	JCB
C	1	THREE "A" HOLES DELETED					
B	1	DIM 7-1/8 was 7 3/16.	11/16/60	3475	DJM	WAF	JCB
A	2	"E" SLOT ADDED	5/18/60	2287	CW	JCB	JCB
A	1	"A" HOLE ADDED					

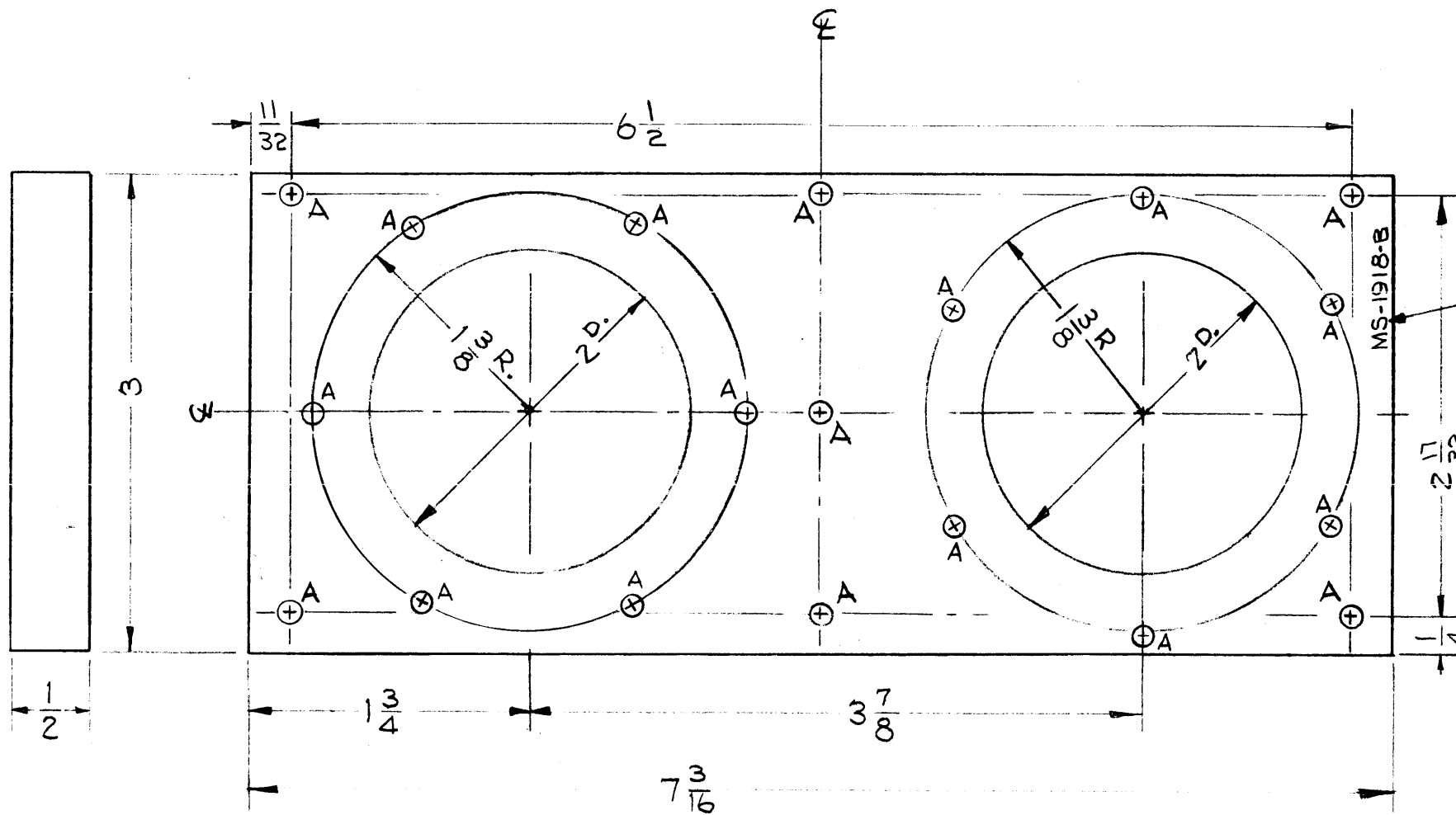
TOLERANCES		SCALE:
DEC. DIM. ±		MAXIMUM ALLOWABLE TOLERANCES HAVE BEEN DETERMINED AND ANY DEVIATIONS WILL BE CAUSE FOR REJECTION. REMOVE ALL BURRS AND SHARP EDGES
FRAC. DIM. ±		
ANGULAR DIM. ±		

REQ. PER UNIT	MODEL	PROJECT NO.	ASS'Y. NO.	DATE
1	RFB-1			12-20-60
1	RFD-1			12-4-59
1	RFC-1			12-2-59

REQ. ITEM	PART NO.	DESCRIPTION	SYMBOL
	.064	THE TECHNICAL MATERIEL CORP.	
	STOCK SIZE	MAMARONECK, NEW YORK	
	ALUMINUM	BRACKET	
	MATERIAL		
	5052-H32		
	TYPE & TEMPER	HEAT TREAT. SPEC.	
	S-404 Yellow Indite		
	FINISH & SPEC. NO.	ELEC. DES. APP.	MECH. DES. APP.

MS-1917 E

Holes Req  
A ~ Drill & Tapped for 8-32 Screws 19



NOTE ~  
HOLES ON 1 3/8" R.  
ARE 60° APART.

METAL STAMP TMC PART NO.  
081- HIGH GOTHIC

NOTICE TO PERSONS RECEIVING THIS DRAWING  
THE TECHNICAL MATERIEL CORPORATION claims proprietary right in the material disclosed hereon. This drawing is issued in confidence for engineering information only and may not be reproduced or used to manufacture anything shown hereon without permission from THE TECHNICAL MATERIEL CORPORATION to the user. This drawing is loaned for mutual assistance and is subject to recall at any time.

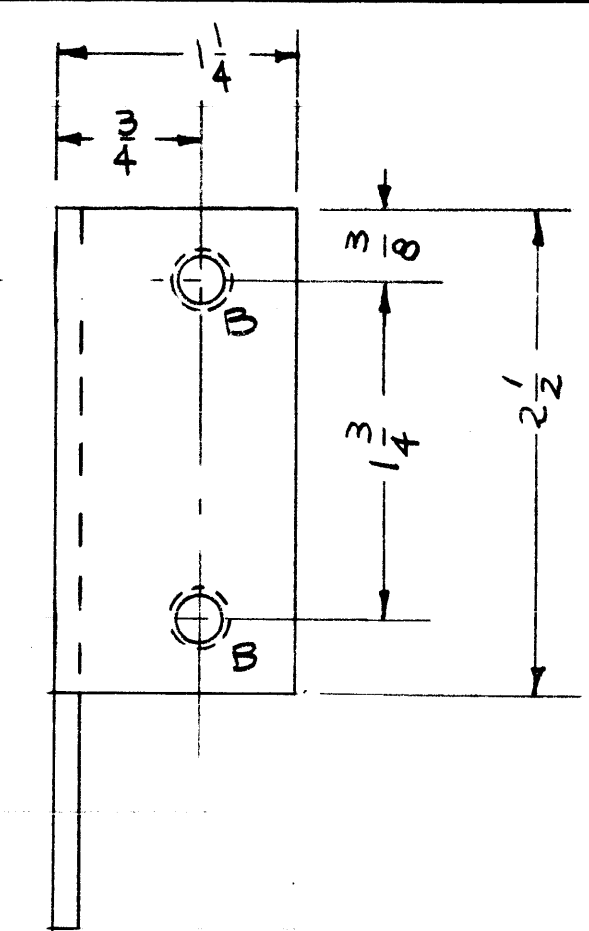
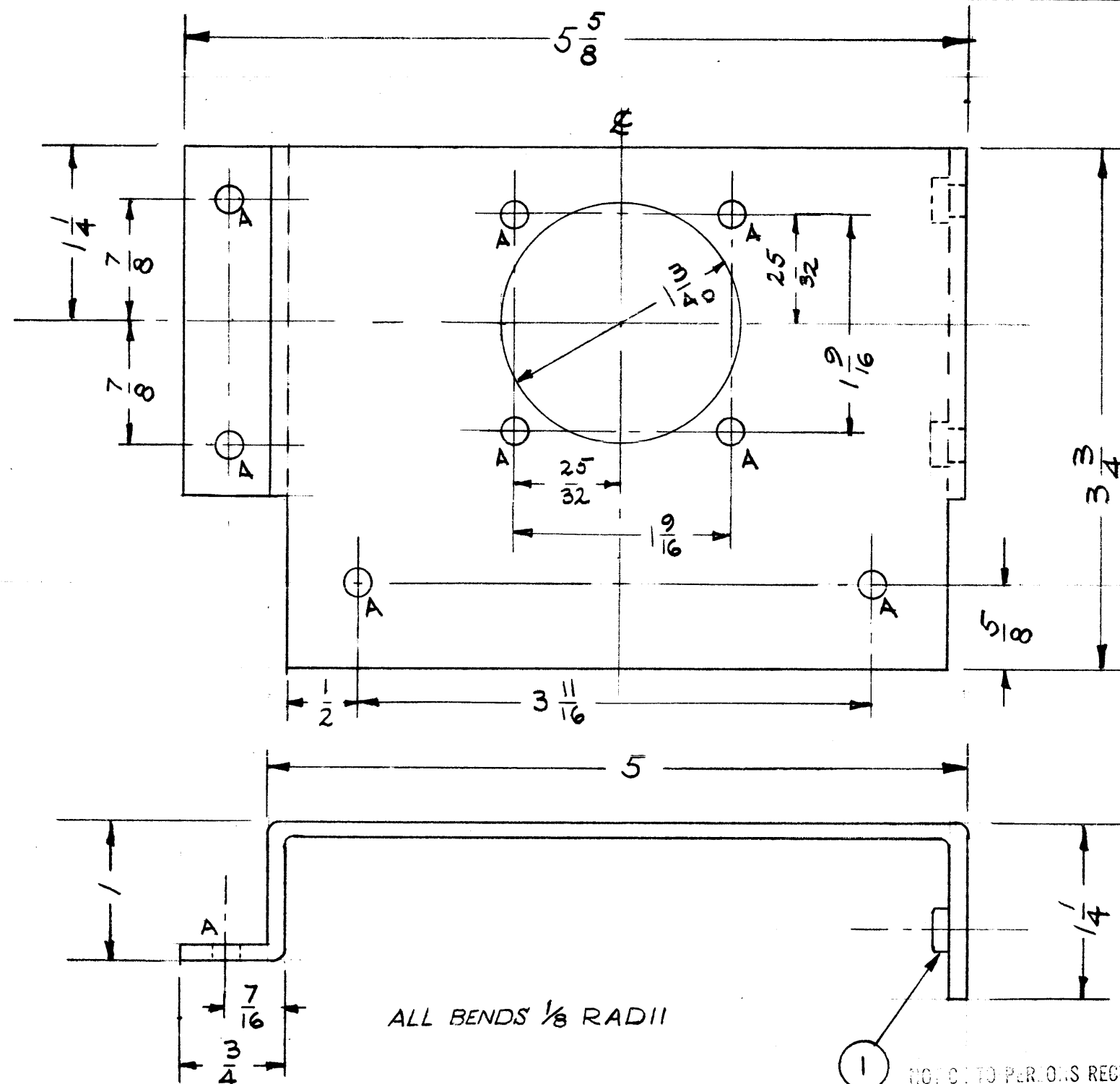
Property of:  
THE TECHNICAL MATERIEL CORPORATION  
MAMARONECK, NEW YORK

ISSUE	ITEM	CHANGED FROM	DATE	CH. NO.	DRAFTS	CHECKER	ENG. APP.
B	1	DIM. 1 1/32 WAS 1/4; 6 1/2 WAS 6 1/16; 2 17/32 WAS 2 5/8	12/23/63	10631			
A	1	12 Holes Relocated On 1 3/8 R.	1-17-62	6214			
TOLERANCES		SCALE:					
DEC. DIM. ±		MAXIMUM ALLOWABLE TOLERANCES HAVE BEEN DETERMINED AND ANY DEVIATIONS WILL BE CAUSE FOR REJECTION.					
FRAC. DIM. ±		REMOVE ALL BURRS AND SHARP EDGES					
ANGULAR DIM. ±							

REQ. PER UNIT	MODEL	PROJECT N.	ASS'Y. NO.	DATE
1	RFC-1			11-22-60
1	RFD-1			12-4-59
1	RFB-1			12-4-59
USED ON				

REQ. ITEM	PART NO.	DESCRIPTION	SYMBOL
	1/2 x 3	THE TECHNICAL MATERIEL CORP. MAMARONECK, NEW YORK	
	ALUMINUM	SPACER, MOUNTING CAPACITOR	
	2024-T4		
	S404 Yellow IRIDITE		
		DRAWN	CHECKED
			FINAL APPROVAL
			MS-1918 B

MS-1925



A -  $\frac{3}{16}$  (.187) DIA.      B REQ'D,  
 B - (.224 - .221)                      2 "

NOTICE TO PERSONS RECEIVING THIS DRAWING

THE TECHNICAL MATERIEL CORPORATION claims proprietary right in the material disclosed hereon. This drawing is issued in confidence for engineering information only and may not be reproduced or used to manufacture anything shown hereon without permission from THE TECHNICAL MATERIEL CORPORATION to the user. This drawing is loaned for mutual assistance and is subject to recall at any time.

Property of:  
 THE TECHNICAL MATERIEL CORPORATION  
 MAMARONECK, NEW YORK

REF: LD-660 (1)

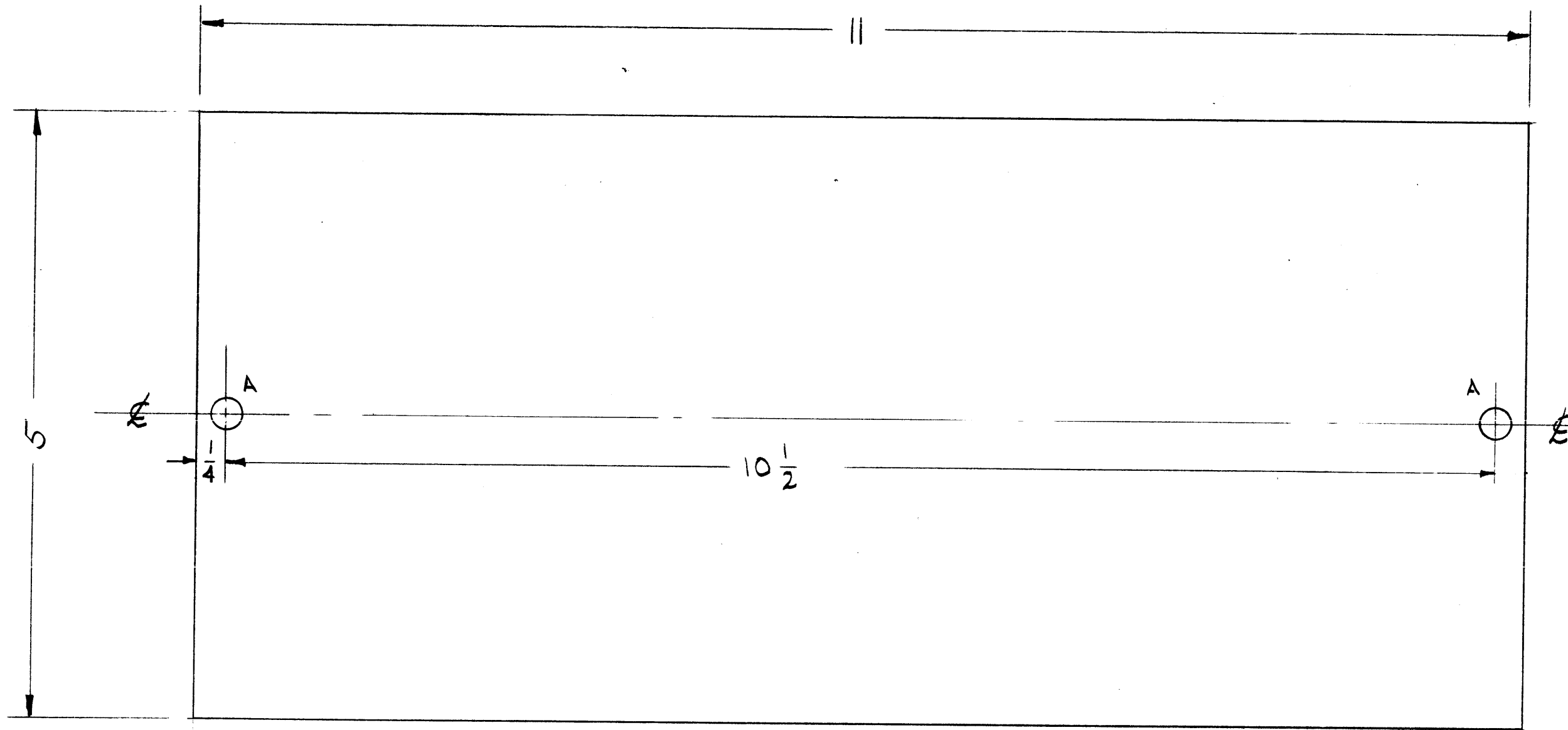
ISSUE	ITEM	CHANGED FROM	DATE	CH. NO.	DRAFTS	CHECKER	ENG. APP.
TOLERANCES			SCALE:				
DEC. DIM. $\pm$			MAXIMUM ALLOWABLE TOLERANCES HAVE BEEN DETERMINED AND ANY DEVIATIONS WILL BE CAUSE FOR REJECTION:				
FRAC. DIM. $\pm$ $\frac{1}{64}$			REM VE ALL BURRS AND HARP EDGES				
ANGULAR DIM. $\pm$							

1	RAK-9	SBT-1K	12-14-59
REQ. PER UNIT	MODEL	PROJECT NO.	ASSY. NO.
			DATE

2	1	NT-129-832-6	NUT, SWAGE	
REQ. ITEM	PART NO.		DESCRIPTION	SYMBOL
$\frac{1}{8}$ THK. STOCK SIZE			THE TECHNICAL MATERIEL CORP. MAMARONECK, NEW YORK	
ALUMINUM			CONNECTOR JUNCTION BRACKET	
5052 H 32				
TYPE & TEMPER	HEATTREAT. SPEC.	DRAWN	CHECKED	FINAL APPROVAL
5404-YEL-IRIDITE				MS-1925
FINISH & SPEC. NO.			ELEC. DE . APPRCH. DES. APP	

MS-1926

NOTE  
NICK ALL CORNERS  
1/16 X 1/16



A - 1/4 (.250) DIA. 2 REQ'D.

NOTICE TO PERSONS RECEIVING THIS DRAWING

THE TECHNICAL MATERIEL CORPORATION claims proprietary right in the material disclosed hereon. This drawing is issued in confidence for engineering information only and may not be reproduced or used to manufacture anything shown hereon without permission from THE TECHNICAL MATERIEL CORPORATION to the user. This drawing is loaned for mutual assistance and is subject to recall at any time.

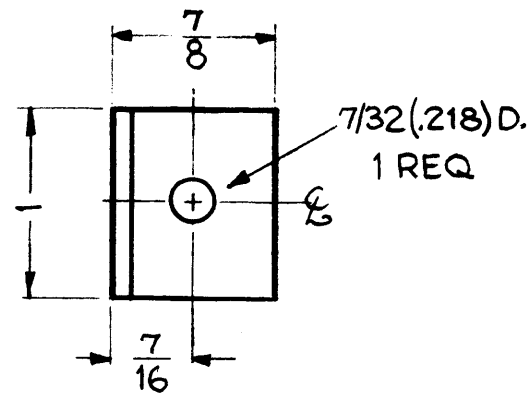
Property of:  
THE TECHNICAL MATERIEL CORPORATION  
MAMARONECK, NEW YORK

ISSUE	ITEM	CHANGED FROM	DATE	CH. NO.	DRAFTS	CHECKER	ENG. APP.
TOLERANCES			SCALE:				
DEC. DIM. ±			MAXIMUM ALLOWABLE TOLERANCES HAVE BEEN DETERMINED AND ANY DEVIATIONS WILL BE CAUSE FOR REJECTION.				
FRAC. DIM. ±			REMOVE ALL BURRS AND SHARP EDGES				
ANGULAR DIM. ±							

REQ. PER UNIT	MODEL	PROJECT NO.	ASS'Y. NO.	DATE
1	RAK-9	SBT-1K		12-11-59
USED ON				

REQ.	ITEM	PART NO.	DESCRIPTION	SYMBOL
2	2	FS-109-3	RING, STUD RETAINING	
2	1	FS-110-2	STUD, SLOTTED HEAD	
.064			THE TECHNICAL MATERIEL CORP.	
STOCK SIZE			MAMARONECK, NEW YORK	
ALUMINUM			COVER, R.F. FILTER CHASSIS	
MATERIAL				
5052 H32			<i>J. RILLO</i>	<i>AW</i>
TYPE & TEMPER		HEAT TREAT. SPEC.	DRAWN	CHECKED
S404 YEL. IRIDITE			<i>AW</i>	<i>AW</i>
FINISH & SPEC. NO.		ELEC. DES. APP.	MECH. DES. APP.	FINAL APPROVAL
				MS-1926

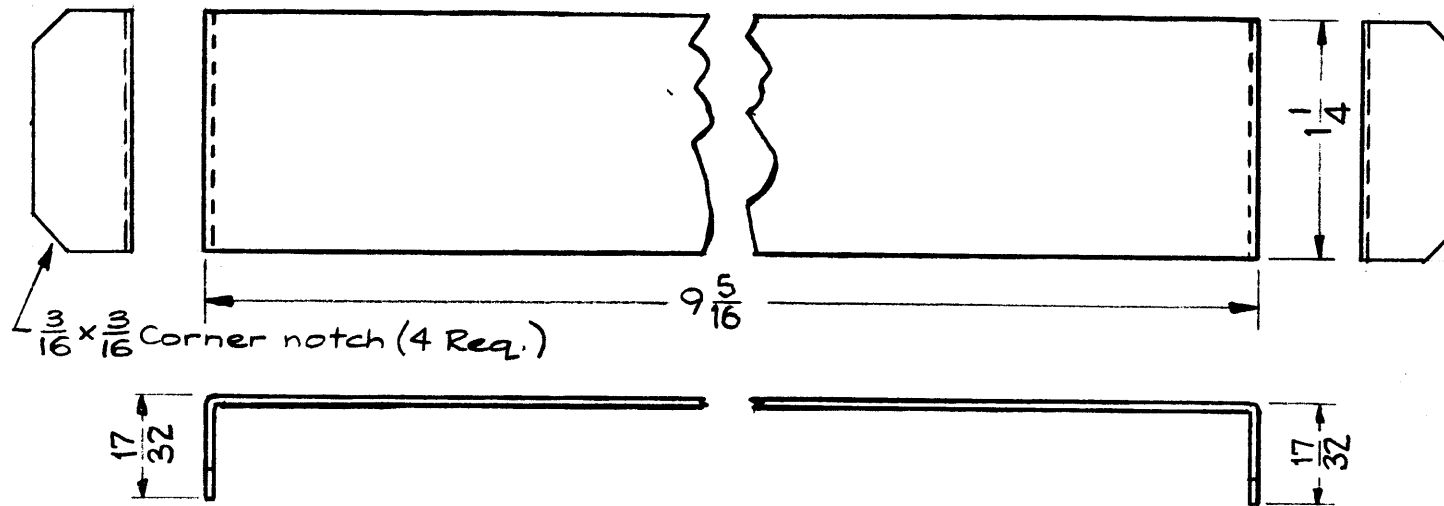
MS-1939



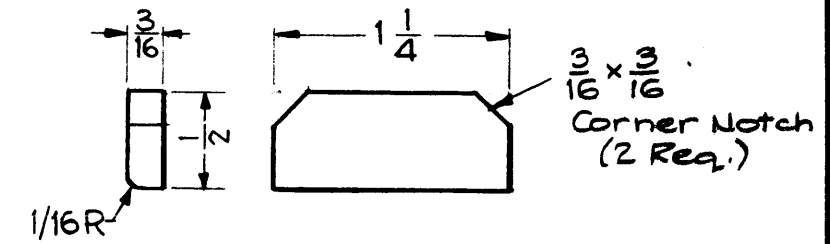
MATERIAL ~  
.081 THK. BRASS,  
HALF HARD

1 REQ. — MOUNTING BRACKET

MATERIAL - .040 THK. SOFT COPPER

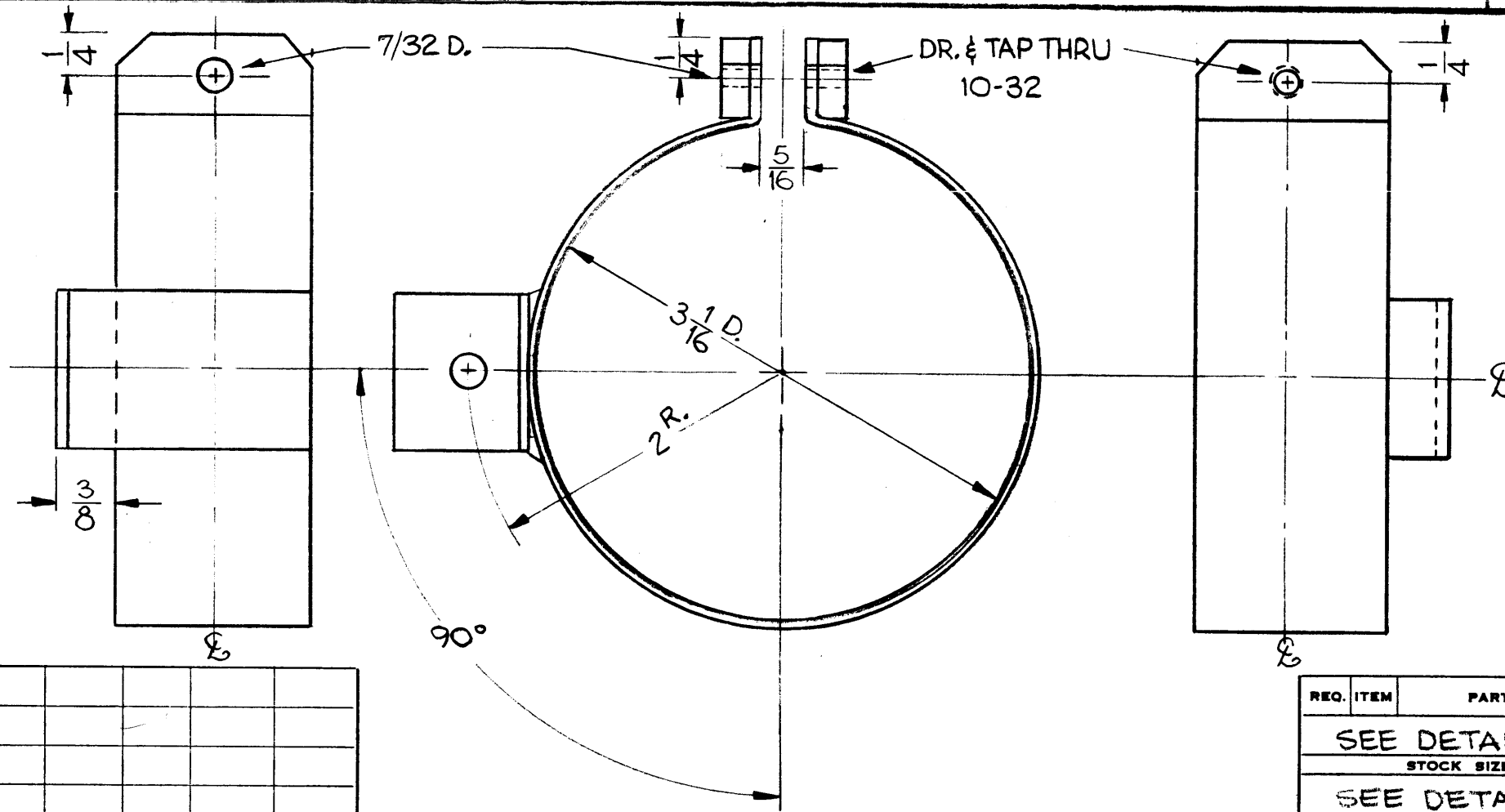


STRAP - 1 REQ.



MATERIAL - 3/16 THK. BRASS,  
HALF HARD

ENDS - 2 REQ



ASSEMBLY

NOTE ~ WELD ENDS & MOUNTING  
BRACKET TO STRAP,  
AS SHOWN.

NOTICE TO PERSONS RECEIVING THIS DRAWING

THE TECHNICAL MATERIEL CORPORATION claims  
proprietary right in the material disclosed hereon.  
This drawing is issued in confidence for engineering  
information only and may not be reproduced or used  
to manufacture anything shown hereon without per-  
mission from THE TECHNICAL MATERIEL CORPORA-  
TION to the user. This drawing is loaned for mutual  
assistance and is subject to recall at any time.

Property of:  
THE TECHNICAL MATERIEL CORPORATION  
MAMARONECK, NEW YORK

ISSUE	ITEM	CHANGED FROM	DATE	CH. NO.	DRAFTS	CHECKER	ENG. APP.
TOLERANCES			SCALE:				
DEC. DIM. ±			MAXIMUM ALLOWABLE TOLERANCES HAVE				
FRAC. DIM. ± 1/64			BEEN DETERMINED AND ANY DEVIATIONS				
ANGULAR DIM. ±			WILL BE CAUSE FOR REJECTION.				
			REMOVE ALL BURRS AND SHARP EDGES				

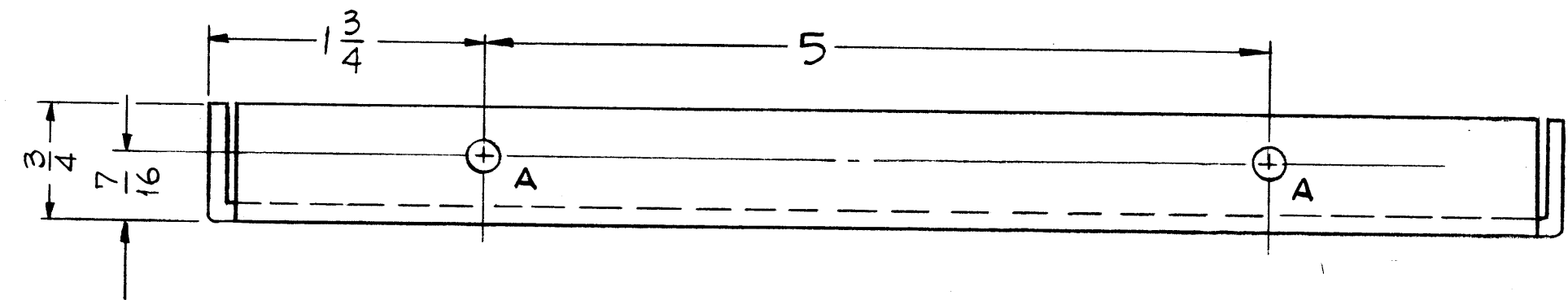
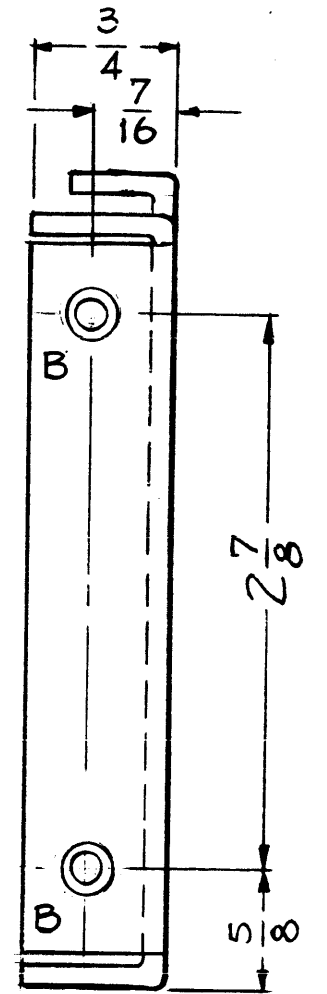
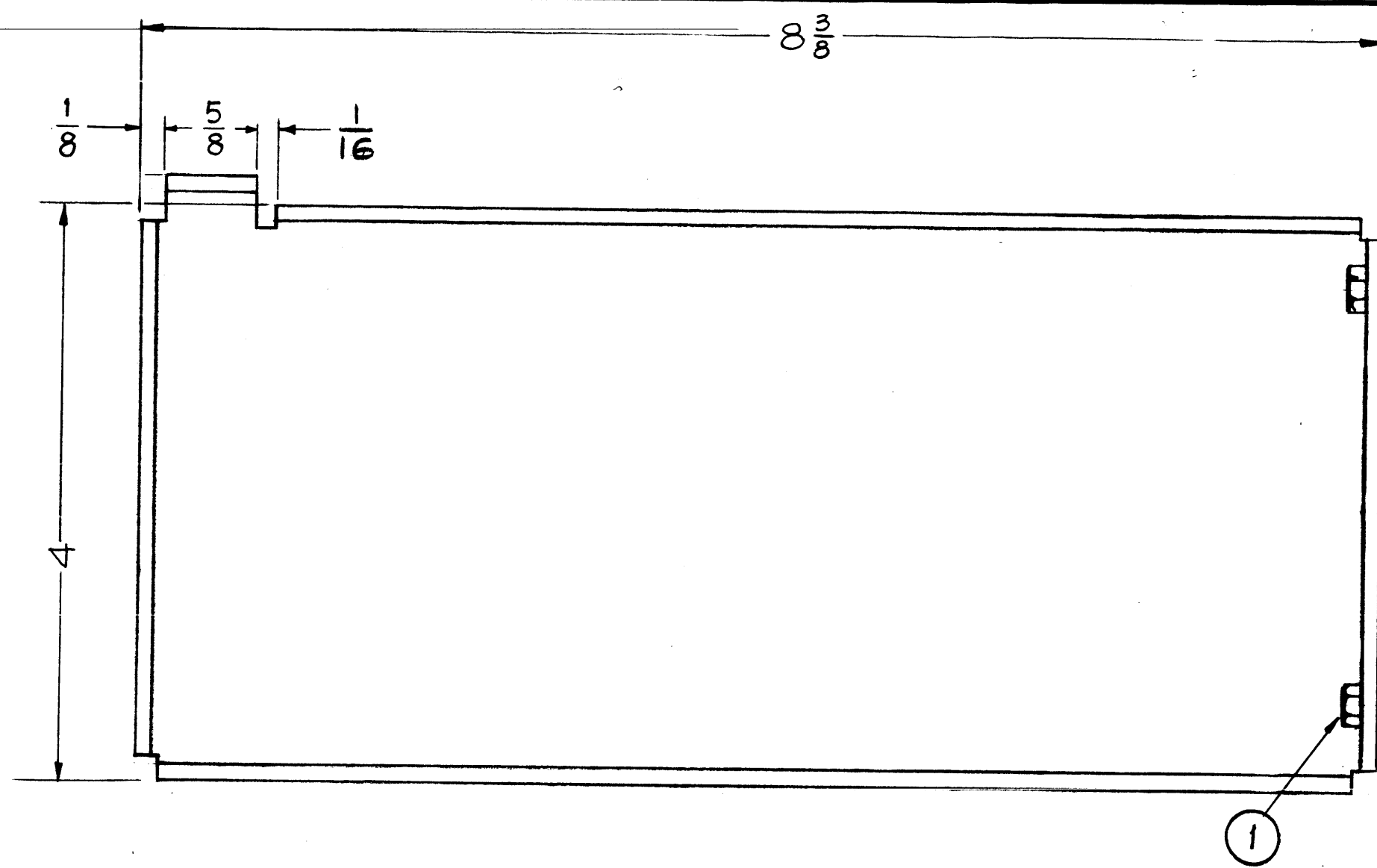
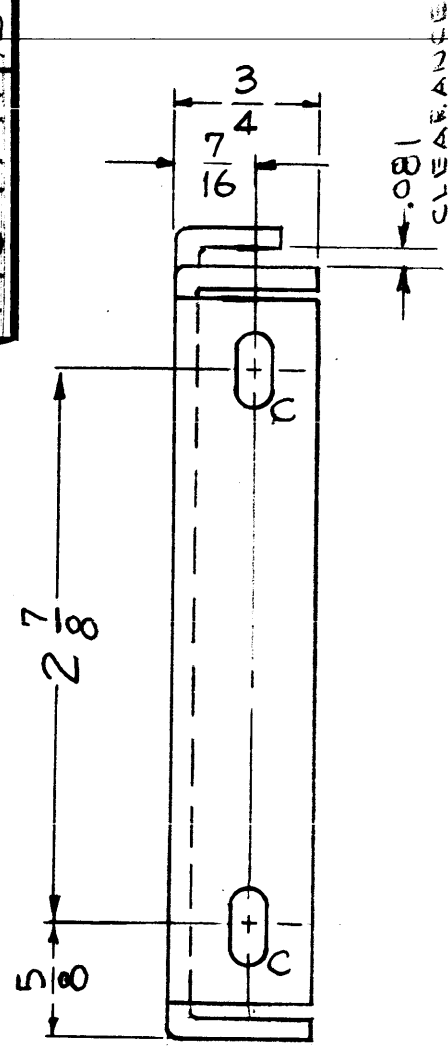
REQ. PER UNIT	AX-212	GPT-40K		1-14-60
	MODEL	PROJECT NO.	ASS'Y. NO.	DATE
USED ON				

REQ. ITEM	PART NO.	DESCRIPTION	SYMBOL
SEE DETAILS		THE TECHNICAL MATERIEL CORP.	
STOCK SIZE		MAMARONECK, NEW YORK	
SEE DETAILS		CLAMP, TUBE	
		(CROWBAR DRAWER)	
SEE DETAILS			
MATERIAL			
TYPE & TEMPER	5135 NICKELPLATE	DRAWN	EM
HEAT TREAT. SPEC.	.0005 THK.	CHECKED	
FINISH & SPEC. NO.			
		ELEC. DES. APP.	MECH. DES. APP.

MS-1939



MS-1949 B



NOTICE TO PERSONS RECEIVING THIS DRAWING

THE TECHNICAL MATERIEL CORPORATION claims proprietary right in the material disclosed hereon. This drawing is issued in confidence for engineering information only and may not be reproduced or used to manufacture anything shown hereon without permission from THE TECHNICAL MATERIEL CORPORATION to the user. This drawing is loaned for mutual assistance and is subject to recall at any time.

Property of:  
THE TECHNICAL MATERIEL CORPORATION  
MAMARONECK, NEW YORK

ISSUE	ITEM	CHANGED FROM	DATE	CH. NO.	DRAFTS	CHECKER	ENG. APP.
B	1	"C" SLOT WAS 7/32 X 3/8	11-2-60	3361	WF	JDe	JB
A	1	"C" SLOT WAS 3/16 X 3/8	8-18-60	2797	RU	JDe	alt

TOLERANCES: DEC. DIM. ±, FRAC. DIM. ± 1/64, ANGULAR DIM. ±

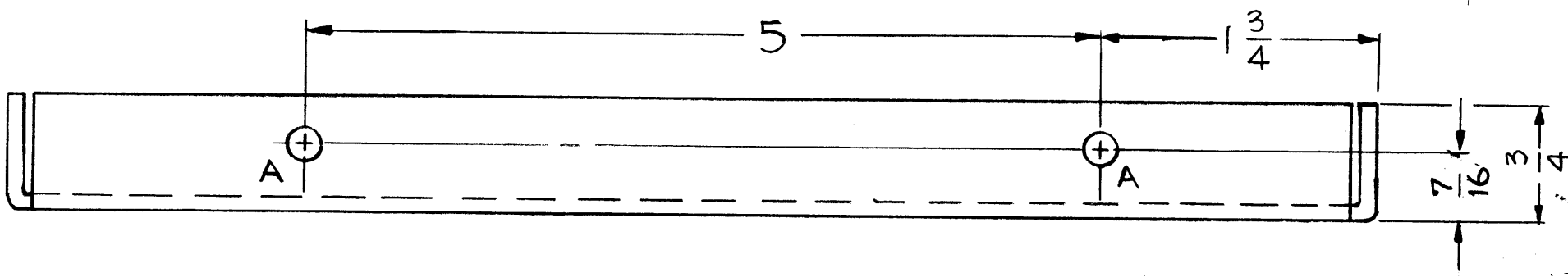
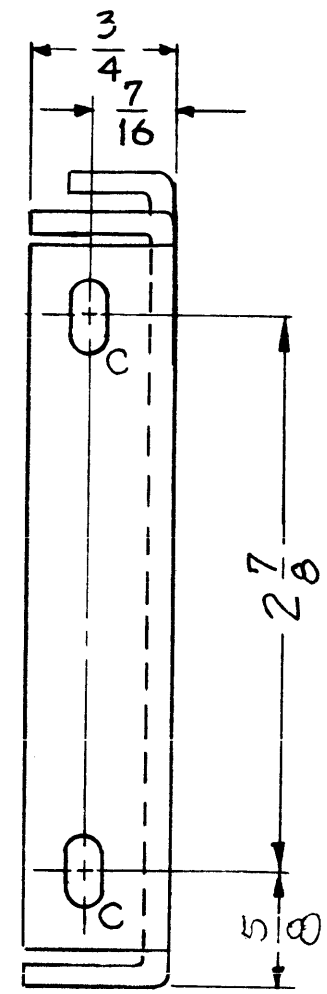
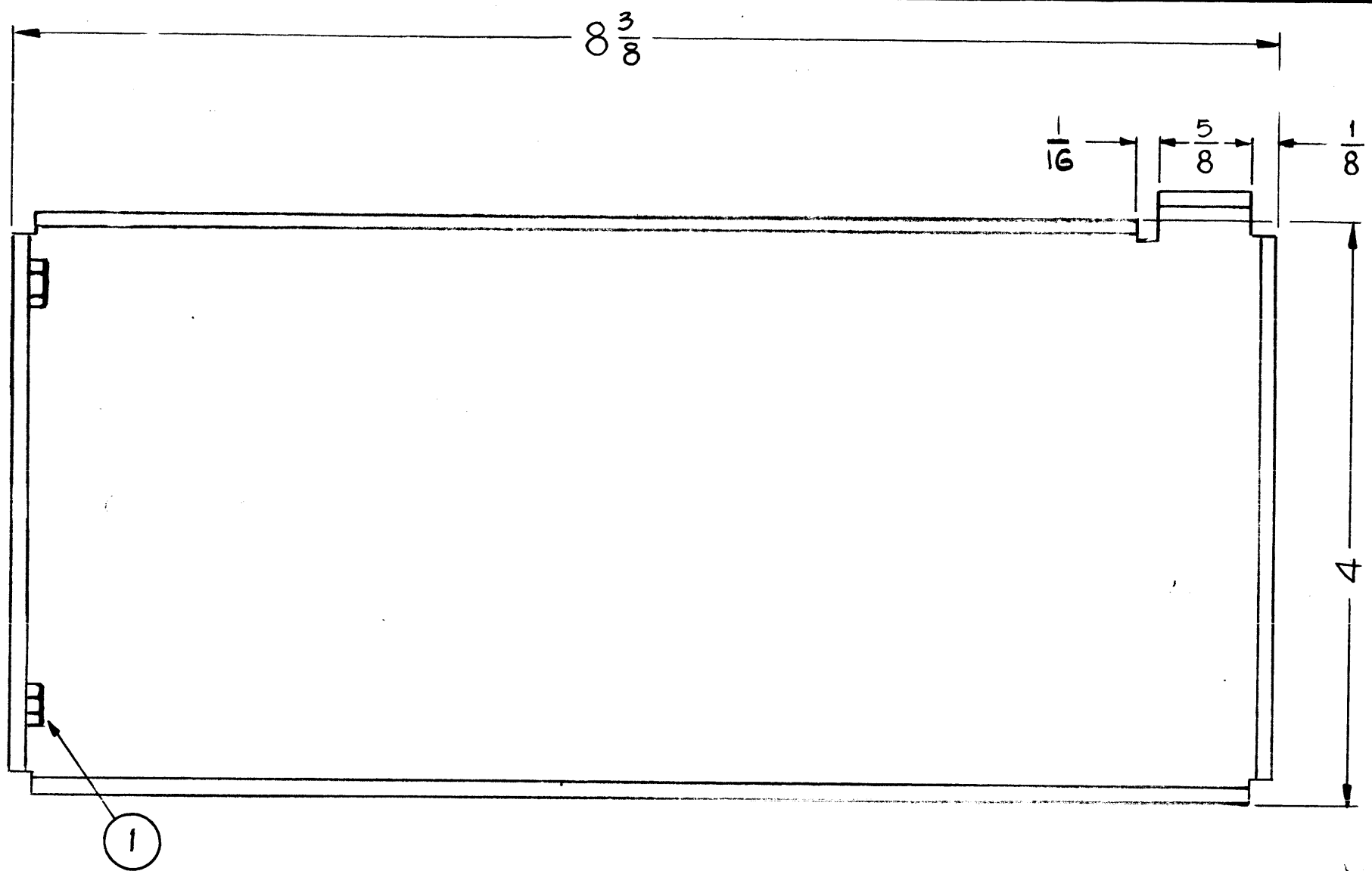
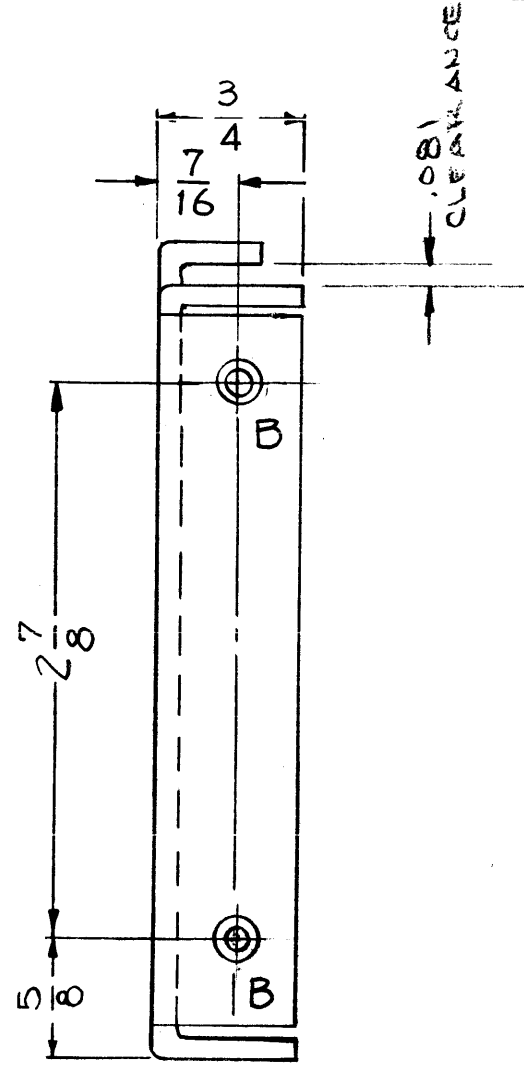
SCALE: MAXIMUM ALLOWABLE TOLERANCES HAVE BEEN DETERMINED AND ANY DEVIATIONS WILL BE CAUSE FOR REJECTION. REMOVE ALL BURRS AND SHARP EDGES

HOLES ~  
 A ~ 7/32 (.218) DIA. ~ 2 Req.  
 B ~ SEE DETAIL ~ 2 REQ  
 C ~ 3/16 X 3/8 SLOTS ~ 2 Req.  
 "B" DETAIL

REQ. PER UNIT	AX-209	GPT 40K	ASS'Y. NO.	DATE
	MODEL	PROJECT NO.		1-14-60
USED ON				

2	1	SM-107-34	INSERT, HEX (8-32)	
REQ. ITEM	PART NO.		DESCRIPTION	SYMBOL
	.081		STOCK SIZE	
	ALUMINUM		MATERIAL	
	5052-H32		TYPE & TEMPER	
			HEAT TREAT. SPEC.	
	S4D4		IRIDITE	
			FINISH & SPEC. NO.	
	J.C. Biele		DRAWN	CHECKED
	2/11/60			
	MS-1949 B		ELEC. DES. APP.	MECH. DES. APP.

MS-1950

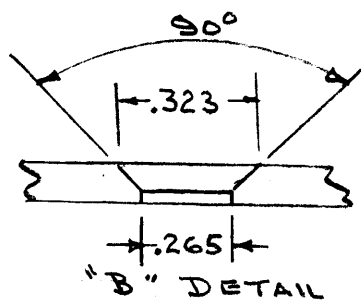


NOTE TO PERSONS RECEIVING THIS DRAWING

THE TECHNICAL MATERIEL CORPORATION claims proprietary right in the material disclosed hereon. This drawing is issued in confidence for engineering information only and may not be reproduced or used to manufacture anything shown hereon without permission from THE TECHNICAL MATERIEL CORPORATION to the user. This drawing is loaned for mutual assistance and is subject to recall at any time.

Property of:  
THE TECHNICAL MATERIEL CORPORATION  
MAMARONECK, NEW YORK

- HOLES ~  
 A - 7/32 (.218) DIA. 2 Req.  
 B - SEE DETAIL 2 Req.  
 C - 3/16 x 3/8 SLOT ~ 2 Req.

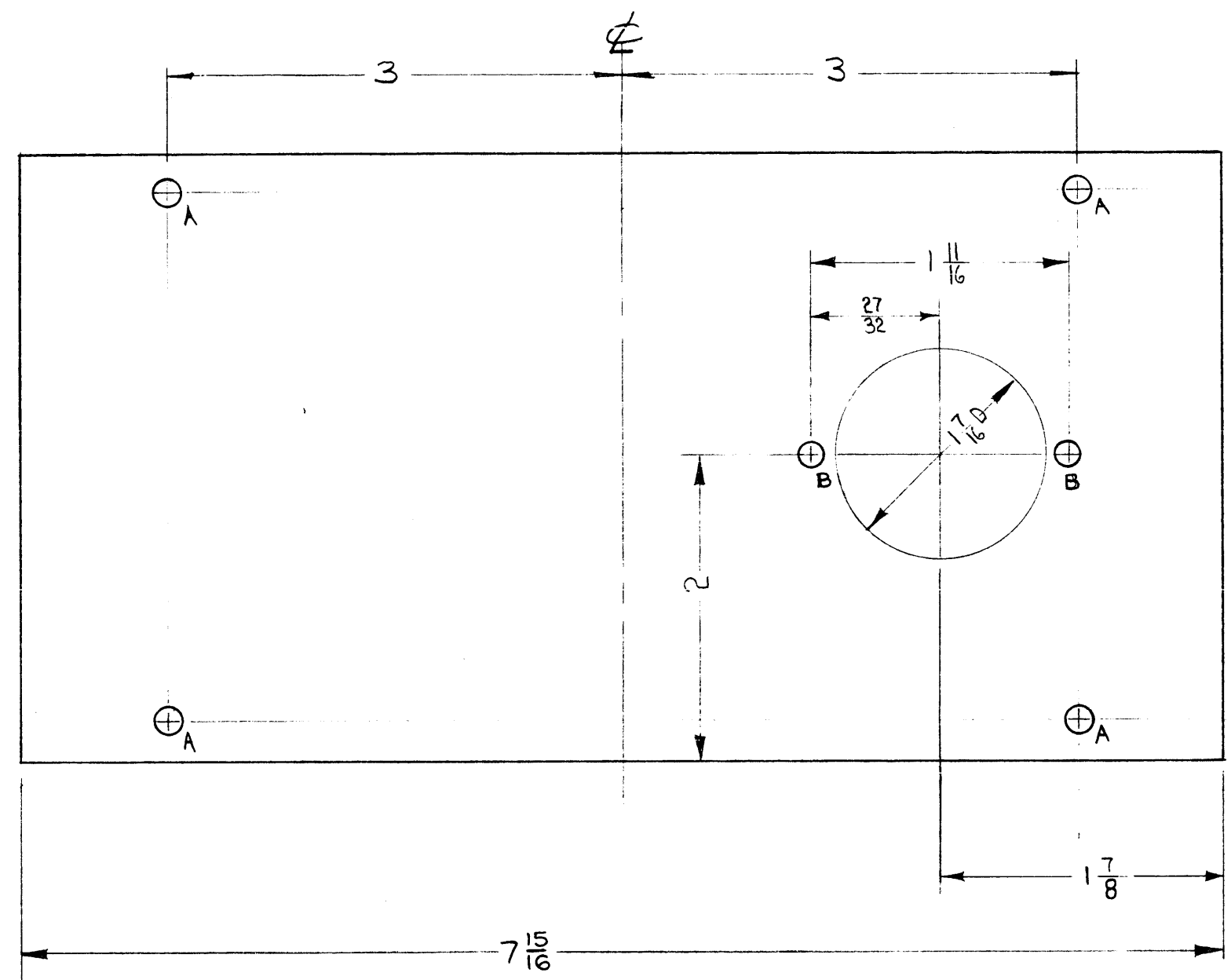


ISSUE	ITEM	CHANGED FROM	DATE	CH. NO.	DRAFTS	CHECKER	ENG. APP.
TOLERANCES			SCALE:				
DEC. DIM. ±			MAXIMUM ALLOWABLE TOLERANCES HAVE BEEN DETERMINED AND ANY DEVIATIONS WILL BE CAUSE FOR REJECTION. REMOVE ALL BURRS AND SHARP EDGES				
FRAC. DIM. ±							
ANGULAR DIM. ±							

REQ. PER UNIT	MODEL	PROJECT NO.	ASS'Y. NO.	DATE
	AX-209	GPT-40K		1-14-60
USED ON				

2	1	SM-107-34	INSERT, HEX (8-32)	
REQ. ITEM	PART NO.		DESCRIPTION	SYMBOL
.081 THK.			THE TECHNICAL MATERIEL CORP.	
STOCK SIZE			MAMARONECK, NEW YORK	
ALUMINUM			BRACKET, LEFT SIDE	
MATERIAL			(PA PANEL)	
5052-H32		J.C. Biele		20
TYPE & TEMPER	HEAT TREAT. SPEC.	DRAWN	CHECKED	FINAL APPROVAL
5404	IRIDITE	20	18	MS-1950
FINISH & SPEC. NO.		ELEC. DES. APP.	MECH. DES. APP.	

MS-1965



- A-  $\frac{11}{64}$  (.171) D      4 REQ.
- B-  $\frac{5}{32}$  (.156) D      2 REQ.

**NOTICE TO PERSONS RECEIVING THIS DRAWING**

THE TECHNICAL MATERIEL CORPORATION claims proprietary right in the material disclosed hereon. This drawing is issued in confidence for engineering information only and may not be reproduced or used to manufacture anything shown hereon without permission from THE TECHNICAL MATERIEL CORPORATION to the user. This drawing is loaned for mutual assistance and is subject to recall at any time.

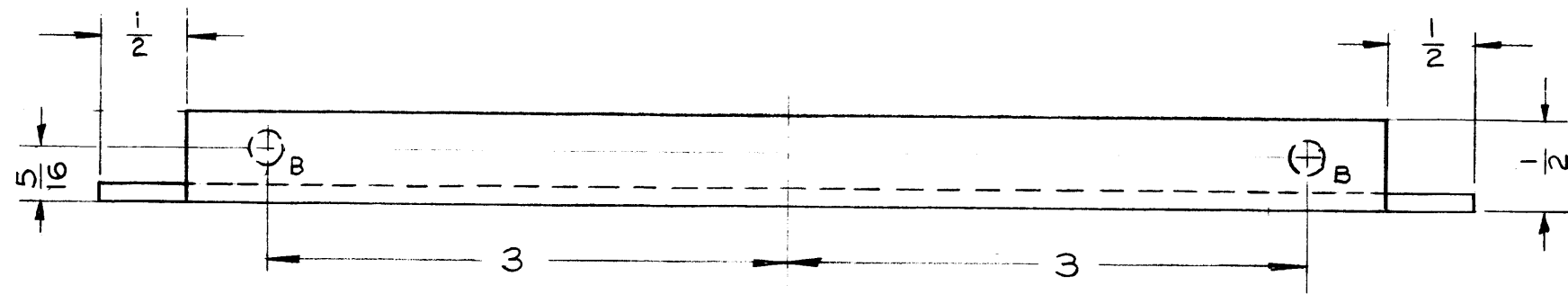
Property of:  
**THE TECHNICAL MATERIEL CORPORATION**  
 MAMARONECK, NEW YORK

ISSUE	ITEM	CHANGED FROM	DATE	CH. NO.	DRAFTS	CHECKER	ENG. APP.
TOLERANCES		SCALE: FULL					
DEC. DIM. ±		MAXIMUM ALLOWABLE TOLERANCES HAVE BEEN DETERMINED AND ANY DEVIATIONS WILL BE CAUSE FOR REJECTION.					
FRAC. DIM. ± $\frac{1}{64}$		REMOVE ALL BURRS AND SHARP EDGES					
ANGULAR DIM. ±							

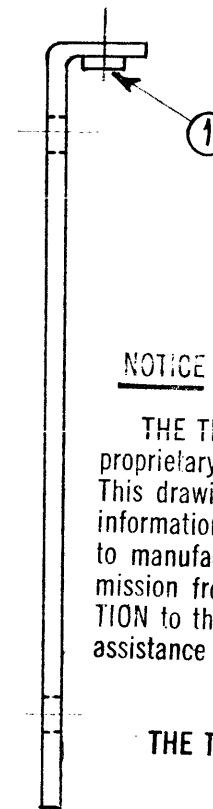
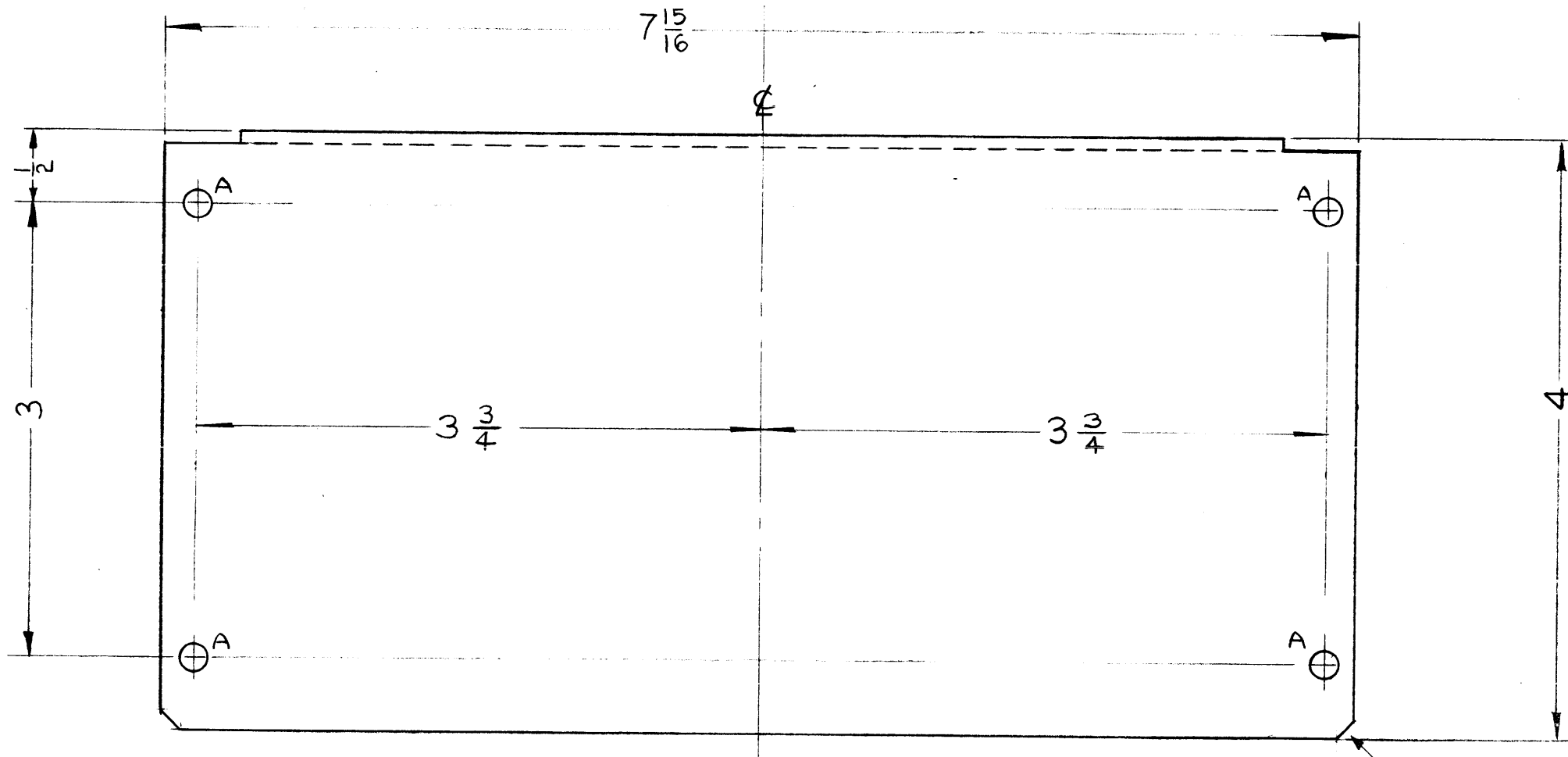
REQ. PER UNIT	MODEL	PROJECT NO.	ASS'Y. NO.	DATE
1	DCP-1			1-20-60
USED ON				

REQ. ITEM	PART NO.	DESCRIPTION	SYMBOL
.051 THK.		THE TECHNICAL MATERIEL CORP. MAMARONECK, NEW YORK	
STOCK SIZE			
ALUMINUM		COVER PLATE	
MATERIAL		POWER CONTROL PANEL	
5052-H32		DRAWN	CHECKED
TYPE & TEMPER	HEAT TREAT. SPEC.	FINAL APPROVAL	
S404 YEL. IRIDITE		MS-1965	
FINISH & SPEC. NO.		ELEC. DES. APP.	MECH. DES. APP.

MS-1966 A



A -  $\frac{11}{64}$  (.171) D. 4 HOLES  
 B -  $\frac{191}{194}$  DIA (NT-129-632-3) 2 REQ



**NOTICE TO PERSONS RECEIVING THIS DRAWING**

THE TECHNICAL MATERIEL CORPORATION claims proprietary right in the material disclosed hereon. This drawing is issued in confidence for engineering information only and may not be reproduced or used to manufacture anything shown hereon without permission from THE TECHNICAL MATERIEL CORPORATION to the user. This drawing is loaned for mutual assistance and is subject to recall at any time.

Property of:  
 THE TECHNICAL MATERIEL CORPORATION  
 MAMARONECK, NEW YORK

$\frac{1}{8} \times \frac{1}{8}$  NOTCH ON ALL CORNERS

A	1	NT-129-632-3 WAS NT-129-632-4	8-16-60	2804	RU	<i>JCP</i>	<i>JCP</i>
ISSUE	ITEM	CHANGED FROM	DATE	CH. NO.	DRAFTS	CHECKER	ENG. APP.
TOLERANCES		SCALE: FULL					
DEC. DIM. $\pm$		MAXIMUM ALLOWABLE TOLERANCES HAVE BEEN DETERMINED AND ANY DEVIATIONS WILL BE CAUSE FOR REJECTION. REMOVE ALL BURRS AND SHARP EDGES					
FRAC. DIM. $\pm$							
ANGULAR DIM. $\pm$							

1	DCP-1			1-20-60
REQ. PER UNIT	MODEL	PROJECT NO.	ASS'Y. NO.	DATE
USED ON				

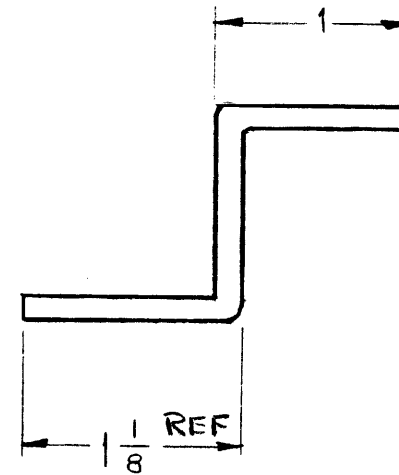
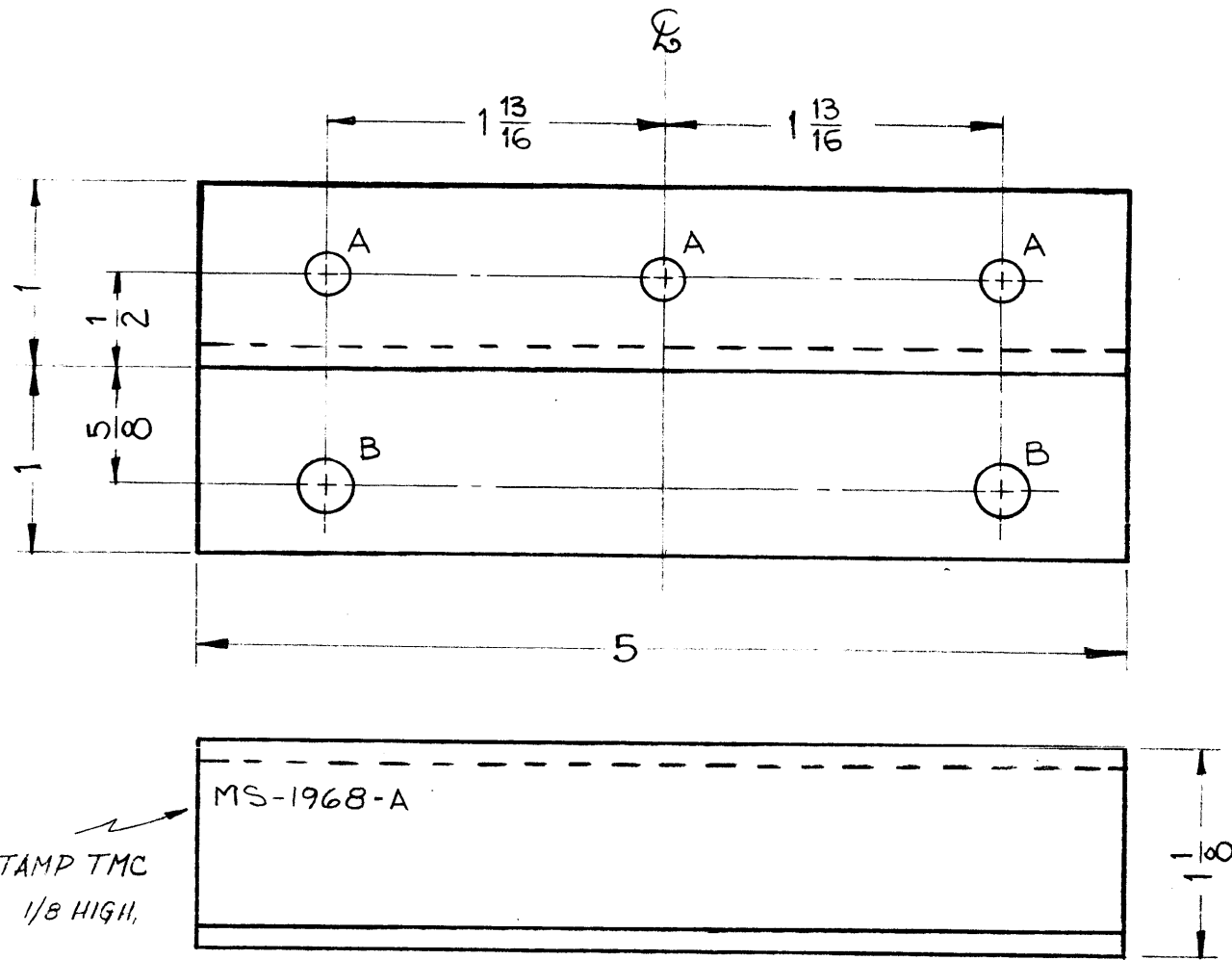
2	1	NT-129-632-3	NUT SWAGE	
REQ. ITEM	PART NO.		DESCRIPTION	
.051 THK		THE TECHNICAL MATERIEL CORP.		
STOCK SIZE		MAMARONECK, NEW YORK		
ALUMINUM		TOP COVER		
MATERIAL		POWER CONTROL PANEL		
5052-H32				<i>AMB</i>
TYPE & TEMPER		HEAT TREAT. SPEC.	DRAWN	CHECKED
S404 YEL. IRIDITE			<i>JCP</i>	<i>AMB</i>
FINISH & SPEC. NO.		ELEC. DES. APP.	MECH. DES. APP.	
				MS-1966
				A

MS-1968-A

HOLEG

A ~ 7/32 (.218) DIA.  
 B ~ 9/32 (.281) "

REQ.  
 3  
 2



NOTICE TO PERSONS RECEIVING THIS DRAWING

THE TECHNICAL MATERIEL CORPORATION claims proprietary right in the material disclosed hereon. This drawing is issued in confidence for engineering information only and may not be reproduced or used to manufacture anything shown hereon without permission from THE TECHNICAL MATERIEL CORPORATION to the user. This drawing is loaned for mutual assistance and is subject to recall at any time.

Property of:  
 THE TECHNICAL MATERIEL CORPORATION  
 MAMARONECK, NEW YORK

ISSUE	ITEM	CHANGED FROM	DATE	CH. NO.	DRAFTS	CHECKER	ENG. APP.
A	2	RADIUS NOTE ADDED	10-11-62	7412			
	1	1/8 DIM. ADDED					

TOLERANCES: DEC. DIM. ±, FRAC. DIM. ± 1/64, ANGULAR DIM. ±

SCALE: MAXIMUM ALLOWABLE TOLERANCES HAVE BEEN DETERMINED AND ANY DEVIATIONS WILL BE CAUSE FOR REJECTION. REMOVE ALL BURRS AND SHARP EDGES

USE MATERIAL THICKNESS FOR MAX. RADIUS ON ALL BENDS UNLESS OTHERWISE SPECIFIED

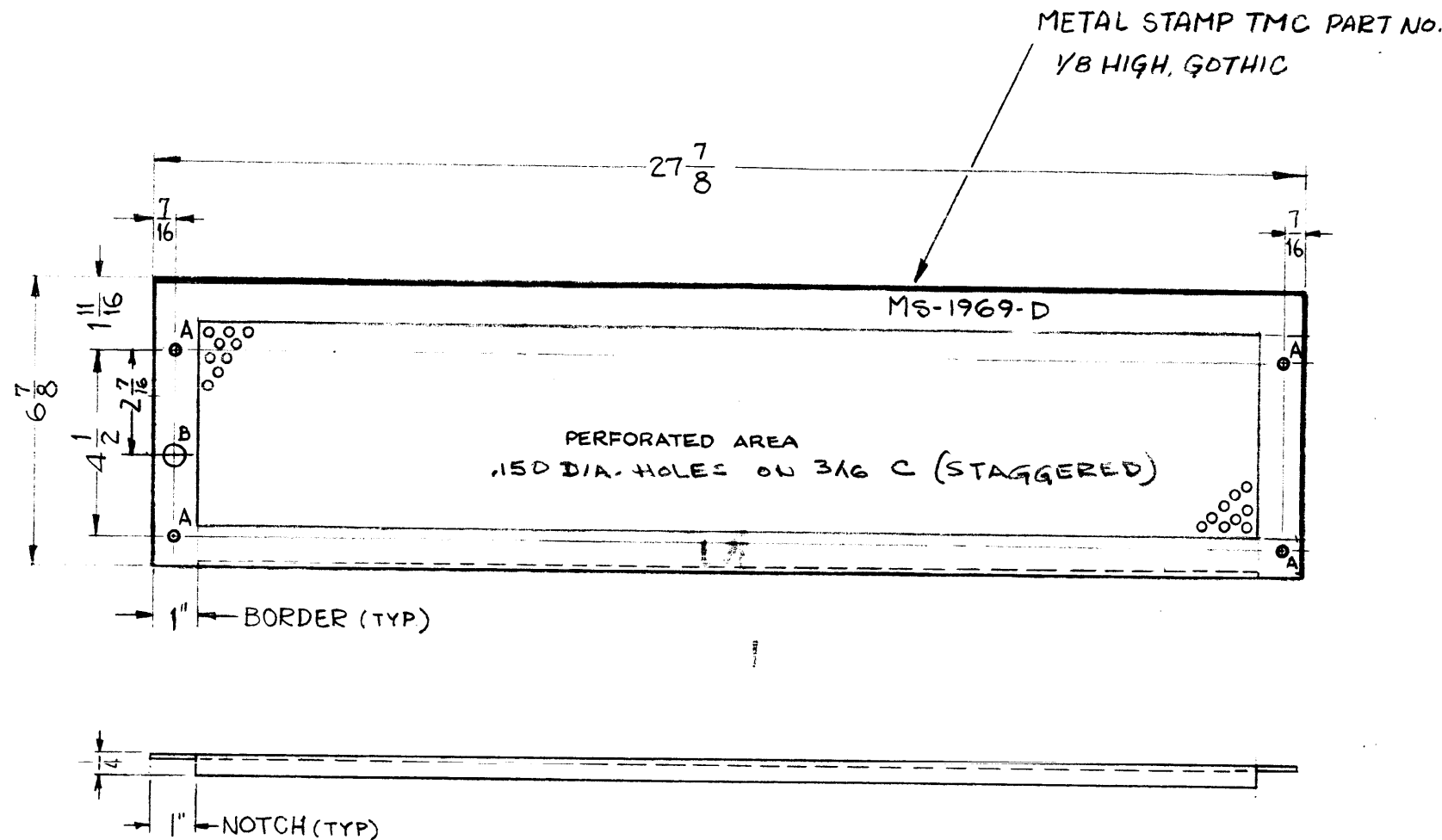
2	AP-104	GPT-40K		1-20-60
REQ. PER UNIT	MODEL	PROJECT NO.	ASS'Y. NO.	DATE

USED ON

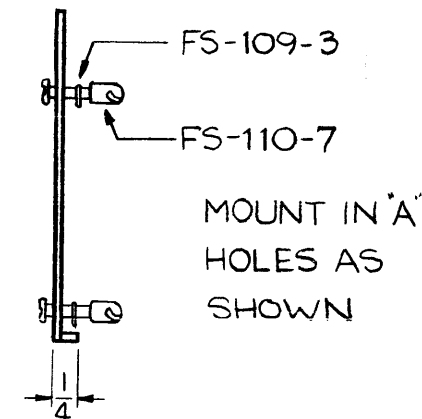
REQ. ITEM	PART NO.	DESCRIPTION	SYMBOL
	1/8 THK.	THE TECHNICAL MATERIEL CORP. MAMARONECK, NEW YORK	
	STOCK SIZE		
	ALUMINUM	BRACKET, TRANSFORMER MTG. (BIAS SUPPLY DRAWER)	
	5052-H32		
	TYPE & TEMPER	HEAT TREAT. SPEC.	
	5-404 IRIDITE		
	FINISH & SPEC. NO.	ELEC. DES. APP.	MECH. DES. APP.

MS-1968-A

MS-1969-D



HOLES  
 A ~ 1/4 (.250) DIA.      REQ. 4  
 B ~ 1/2 DIA.              REQ. 1



NOTICE TO PERSONS RECEIVING THIS DRAWING

THE TECHNICAL MATERIEL CORPORATION claims proprietary right in the material disclosed hereon. This drawing is issued in confidence for engineering information only and may not be reproduced or used to manufacture anything shown hereon without permission from THE TECHNICAL MATERIEL CORPORATION to the user. This drawing is loaned for mutual assistance and is subject to recall at any time.

Property of:  
 THE TECHNICAL MATERIEL CORPORATION  
 MAMARONECK, NEW YORK

REF: LD-827

D	1	BLANK SIZE REF: MS-1775-G, DELETED	4-25-63	8912	MM	HQ	
C	2	(1) "B" HOLE RELOCATED	11-30-62	7728	GA	JL	
	1	LIP RELOCATED & CLARIFIED					
B	1	DIM 2 7/16 WAS 1 1/8	10-8-60	3040	BA	JL	
A	1	(1) "B" HOLE ADDED	6-29-60	2568	CA	JL	
ISSUE	ITEM	CHANGED FROM	DATE	CH. NO.	DRAFTS	CHECKER	ENG. APP.

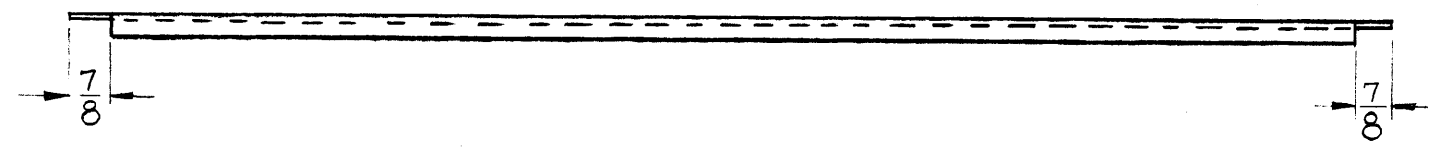
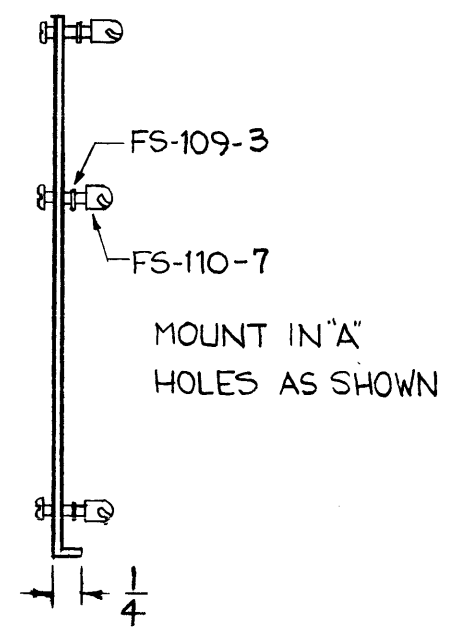
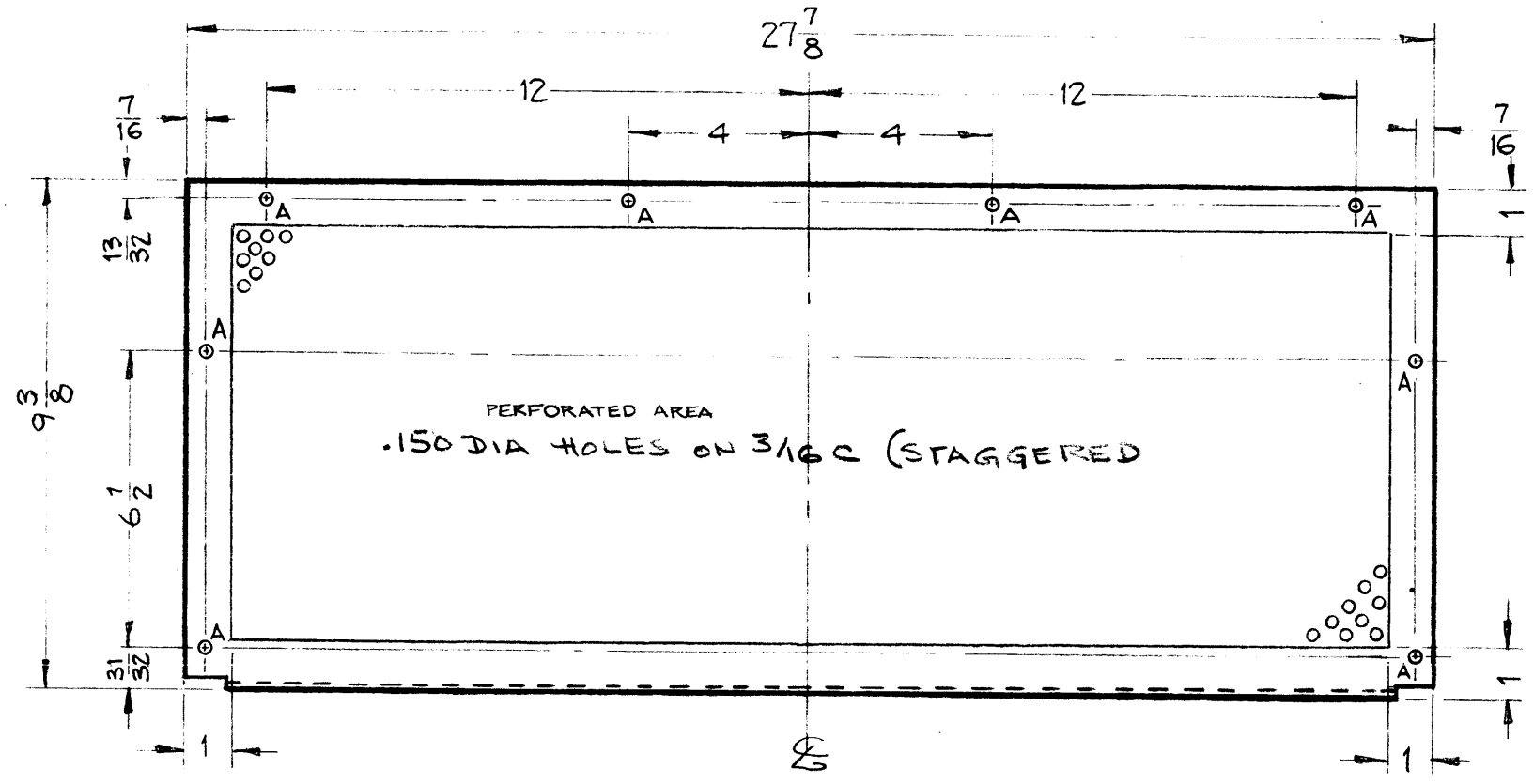
TOLERANCES		SCALE:
DEC. DIM. ±		MAXIMUM ALLOWABLE TOLERANCES HAVE BEEN DETERMINED AND ANY DEVIATIONS WILL BE CAUSE FOR REJECTION. REMOVE ALL BURRS AND SHARP EDGES
FRAC. DIM. ±	1/64	
ANGULAR DIM. ±		

1	AP-104	SPT-40K		1-21-60
REQ. PER UNIT	MODEL	PROJECT NO.	ASS'Y. NO.	DATE
USED ON				

4	2	FS-109-3	RING, STUD RETAINING	
4	1	FS-110-7	STUD	
REQ. ITEM	PART NO.		DESCRIPTION	SYMBOL
.064 THK			THE TECHNICAL MATERIEL CORP.	
STOCK SIZE			MAMARONECK, NEW YORK	
PERFORATED ALUMINUM			COVER, REAR	
MATERIAL			(BIAS SUPPLY DRAWER)	
5052-H32			DRAWN	CHECKED
TYPE & TEMPER		HEAT TREAT. SPEC.		FINAL APPROVAL
5-404 IRIDITE			EM	
FINISH & SPEC. NO.		ELEC. DES. APP.	MECH. DES. APP.	MS-1969-D

MS-1970 B

HOLES  
A ~ 1/4 (.250) DIA. REQ  
8



NOTICE TO PERSONS RECEIVING THIS DRAWING

THE TECHNICAL MATERIEL CORPORATION claims proprietary right in the material disclosed hereon. This drawing is issued in confidence for engineering information only and may not be reproduced or used to manufacture anything shown hereon without permission from THE TECHNICAL MATERIEL CORPORATION to the user. This drawing is loaned for mutual assistance and is subject to recall at any time.

Property of:  
THE TECHNICAL MATERIEL CORPORATION  
MAMARONECK, NEW YORK

ISSUE	ITEM	CHANGED FROM	DATE	CH. NO.	DRAFTS	CHECKER	ENG. APP.
B	1	BLANK SIZE REF: MS-1775-S, DELETED	4-25-63	B912	MS	MS	MS
A	1	IN SIDE VIEW PICTORIAL CLARIFIED	3-7-60	~	MS	MS	MS

TOLERANCES		SCALE:	
DEC. DIM. ±		MAXIMUM ALLOWABLE TOLERANCES HAVE BEEN DETERMINED AND ANY DEVIATIONS WILL BE CAUSE FOR REJECTION.	
FRAC. DIM. ±	1/64	REMOVE ALL BURRS AND SHARP EDGES	
ANGULAR DIM. ±			

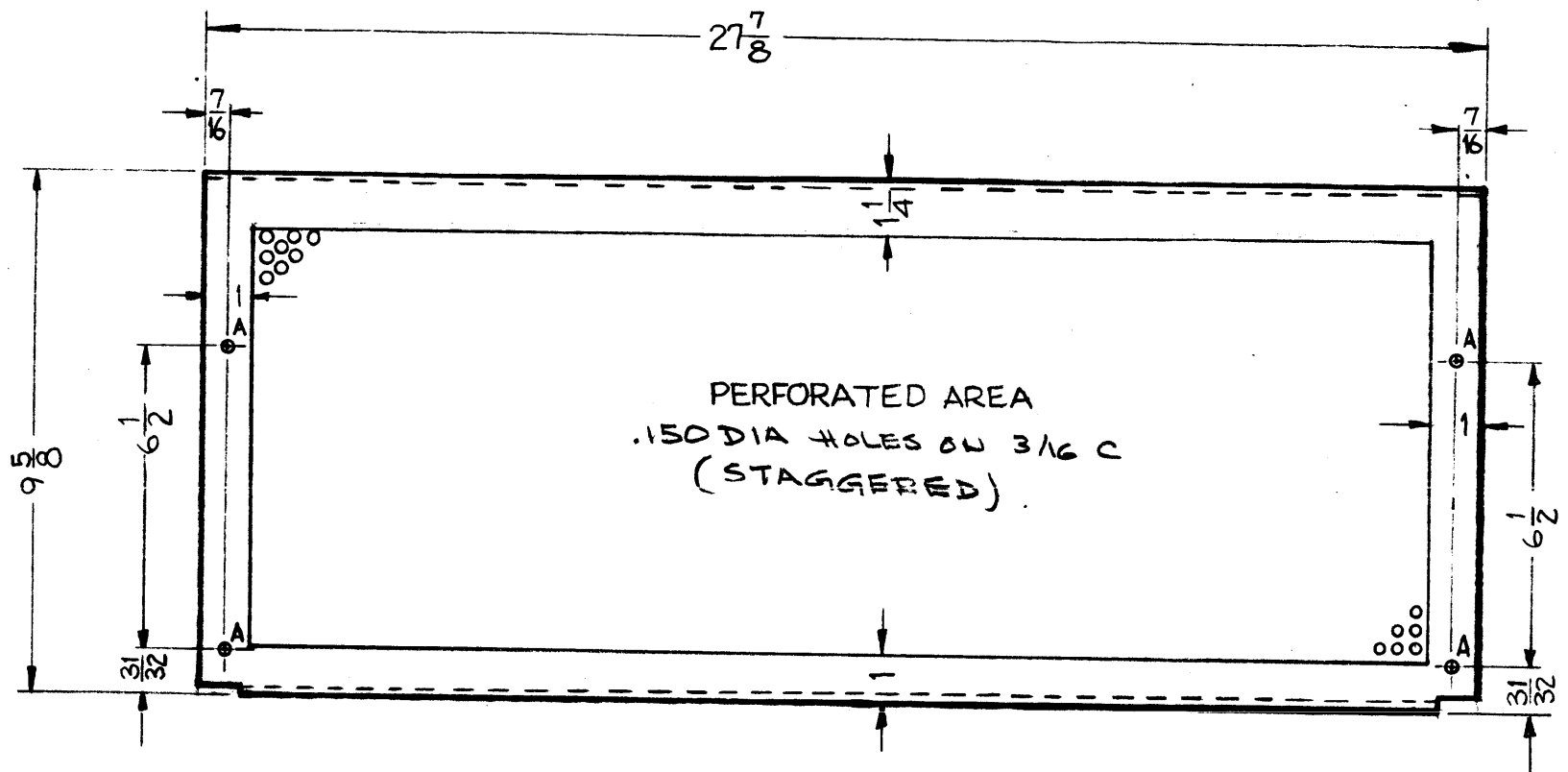
1	GPT-40K	AP-104		1-21-60
REQ. PER UNIT	MODEL	PROJECT NO.	ASS'Y. NO.	DATE
USED ON				

8	2	FS-109-3	RING, STUD RETAINING	
8	1	FS-110-7	STUD	
REQ. ITEM		PART NO.	DESCRIPTION	SYMBOL
064 THK			THE TECHNICAL MATERIEL CORP. MAMARONECK, NEW YORK	
STOCK SIZE				
PERFORATED ALUMINUM			COVER, BOTTOM	
MATERIAL			(BIAS SUPPLY DRAWER)	
5052-H32			MS-1970 B	
TYPE & TEMPER		HEAT TREAT. SPEC.	DRAWN	CHECKED
S-404 IRIDITE			EM	MS-1970 B
FINISH & SPEC. NO.		ELEC. DES. APP.	MECH. DES. APP.	

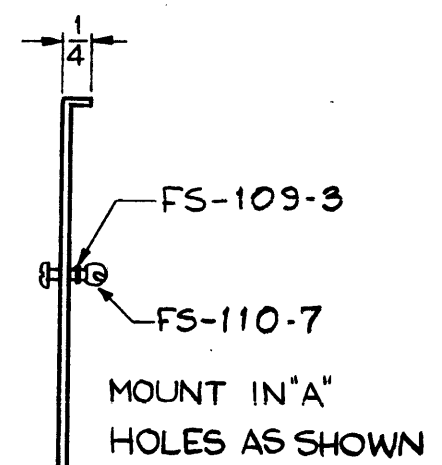
MS-1971 A

HOLES  
A ≈ 1/4 (.250) DIA.

REQ  
4



PERFORATED AREA  
.150 DIA HOLES ON 3/16 C  
(STAGGERED)

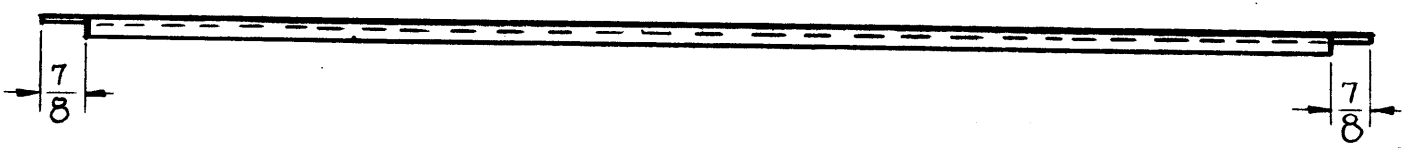


NOTICE TO PERSONS RECEIVING THIS DRAWING

THE TECHNICAL MATERIEL CORPORATION claims proprietary right in the material disclosed hereon. This drawing is issued in confidence for engineering information only and may not be reproduced or used to manufacture anything shown hereon without permission from THE TECHNICAL MATERIEL CORPORATION to the user. This drawing is loaned for mutual assistance and is subject to recall at any time.

Property of:

THE TECHNICAL MATERIEL CORPORATION  
MAMARONECK, NEW YORK



4	2	FS-109-3	RINGS, STD RETAINING
4	1	FS-110-7	STD
REQ. ITEM	PART NO.		DESCRIPTION
STOCK SIZE			SYMBOL
.064 THK			THE TECHNICAL MATERIEL CORP. MAMARONECK, NEW YORK
PERFORATED ALUMINUM			
MATERIAL			COVER, TOP
5052-H32			(BIAS SUPPLY DRAWER)
TYPE & TEMPER		HEAT TREAT. SPEC.	DRAWN CHECKED FINAL APPROVAL
S-404 IRIDITE			
FINISH & SPEC. NO.			ELEC. DES. APP. ME H. DES. APP.

ISSUE	ITEM	CHANGED FROM	DATE	CH. NO.	DRAFTS	CHECKER	ENG. APP.
A	1	BLANK SIZE REF: MS-1755-5, DELETED	4-25-63	8912			
TOLERANCES		SCALE: 1/4					
DEC. DIM. ±		MAXIMUM ALLOWABLE TOLERANCES HAVE BEEN DETERMINED AND ANY DEVIATIONS WILL BE CAUSE FOR REJECTION.					
FRAC. DIM. ± 1/64		REMOVE ALL BURRS AND SHARP EDGES					
ANGULAR DIM. ±							

REQ. PER UNIT	MODEL	PROJECT NO.	ASS'Y. NO.	DATE
1	AP-104	GPT-40K		1-20-60
USED ON				



TMC PARTNUMBER	LENGTH "A"	WIDTH "C"	MODEL	QUANTITY	ASSEMBLY
MS-1980-1	4-3/4	1-1/2	AX-209	2	
MS-1980-2	4-7/8	1-1/2	AX-209	2	
MS-1980-3	5	1-1/2	AX-209	2	
MS-1980-4	5-1/8	1-1/2	AX-209	2	
MS-1980-5	5-1/4	1-1/2	AX-209	2	

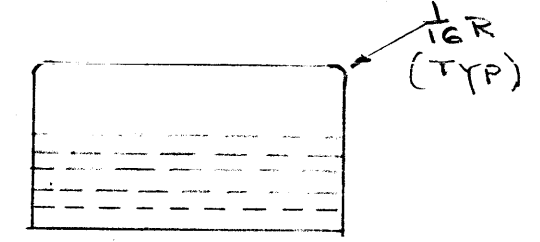
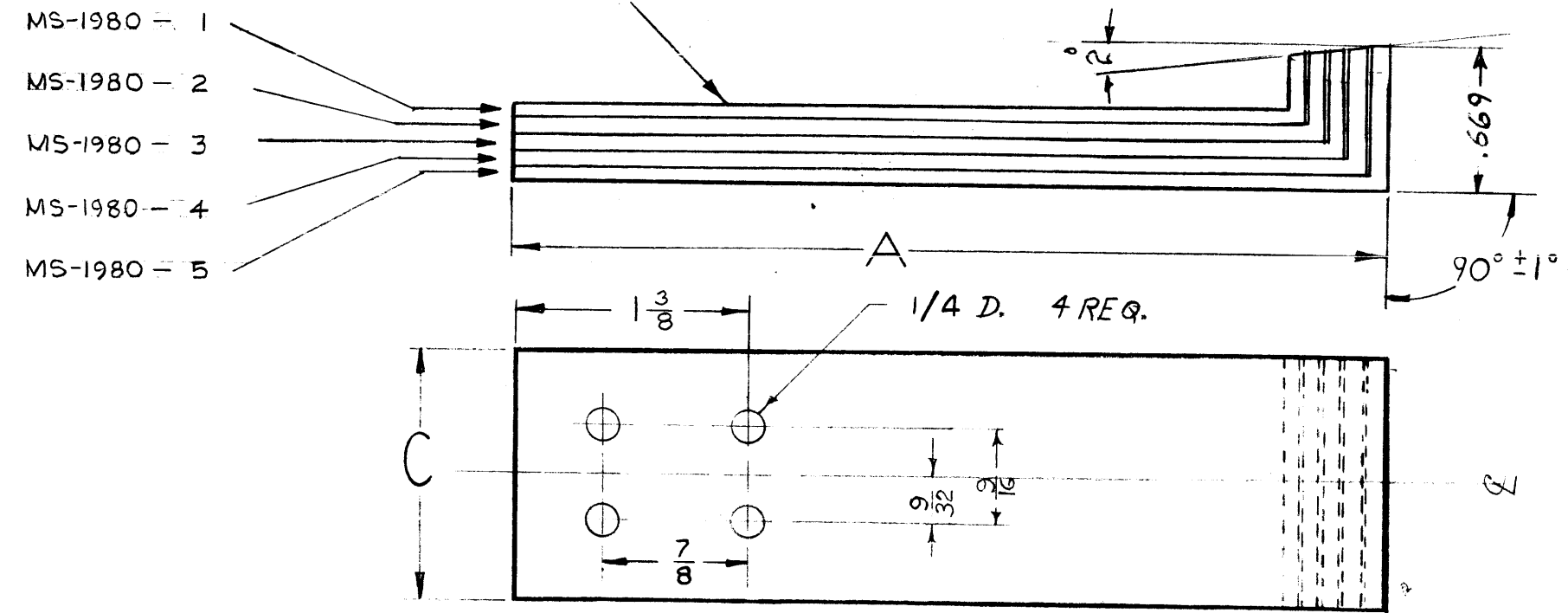
NOTICE TO PERSONS RECEIVING THIS DRAWING  
 NOT A  
 THE TECHNICAL MATERIEL CORPORATION claims  
 proprietary right in the material disclosed hereon.  
 This drawing is issued in confidence of engineering  
 information only and may not be re-used or used  
 to manufacture anything shown hereon without per-  
 mission from THE TECHNICAL MATERIEL CORPORA-  
 TION of the user. This drawing is loaned for mutual  
 assistance and is subject to recall at any time.  
 Property of:

THE TECHNICAL MATERIEL CORPORATION  
 MAMARONECK, NEW YORK

1. MATCHED SET CONSISTS OF 1 EACH  
 MS-1980-1 THRU MS-1980-5

NOTE:  
 EACH MATCHED SET MUST BE  
 ASSEMBLED, CUT (2°), & MAINTAINED  
 AS A SEPARATE SET.

~ NOTE ~  
 STOCK MUST BE FLAT,  
 W/O DISTORTION



NOTE: (HEAT TREATMENT)  
 600° F FOR 2 HOURS IN CLOSED OVEN AFTER  
 BENDING & MACHINING.

G	1	4 Holes, 1/4 D. were 3/16 D	3-16-61	4441	Ru	JCB	SB
F	3	DIM. .669 & 90° ± 1° Added	12-9-60	3654	Ru	JCB	SB
	2	IN CHART Lip B Col. DELETED					
E	1	STOCK NOTE ADDED					
	2	FULLY HARD ADDED TO TYPE	9-26-60	3085			
D	1	HEAT TREATMENT NOTE ADDED	6/29/60	1589			
	1	.040 WAS .064 STOCK					
C	2	NOTES ADDED	4/26/60				
	1	MS1980-6-10 DELETED					
B	1	REVISION OF TOLERANCES	4/8/60				

ISSUE	ITEM	CHANGED FROM	DATE	CH. NO.	DRAFTS	CHECKER	ENG. APP.
TOLERANCES			SCALE:				
DEC. DIM. ±			MAXIMUM ALLOWABLE TOLERANCES HAVE BEEN DETERMINED AND ANY DEVIATIONS WILL BE CAUSE FOR REJECTION. REMOVE ALL BURRS AND SHARP EDGES				
FRAC. DIM. ± 1/64							
ANGULAR DIM. ±							

SEE CHART	REQ. PER UNIT	MODEL	PROJECT NO.	ASS'Y. NO.	DATE
		GPT 40K			4-26-60

REQ. ITEM	PART NO.	DESCRIPTION	SYMBOL
	.040	THE TECHNICAL MATERIEL CORP. MAMARONECK, NEW YORK	
	STOCK SIZE		
	BERYLLIUM Copper	LEAF, CONTACT	
	MATERIAL		
FULLY HARD	SEE NOTE		
TYPE & TEMPER	HEAT TREAT. SPEC.	DRAWN	CHECKED
RHODIUM .000025			
FINISH & SPEC. NO.	ELEC. DES. APP.	MECH. DES. APP.	