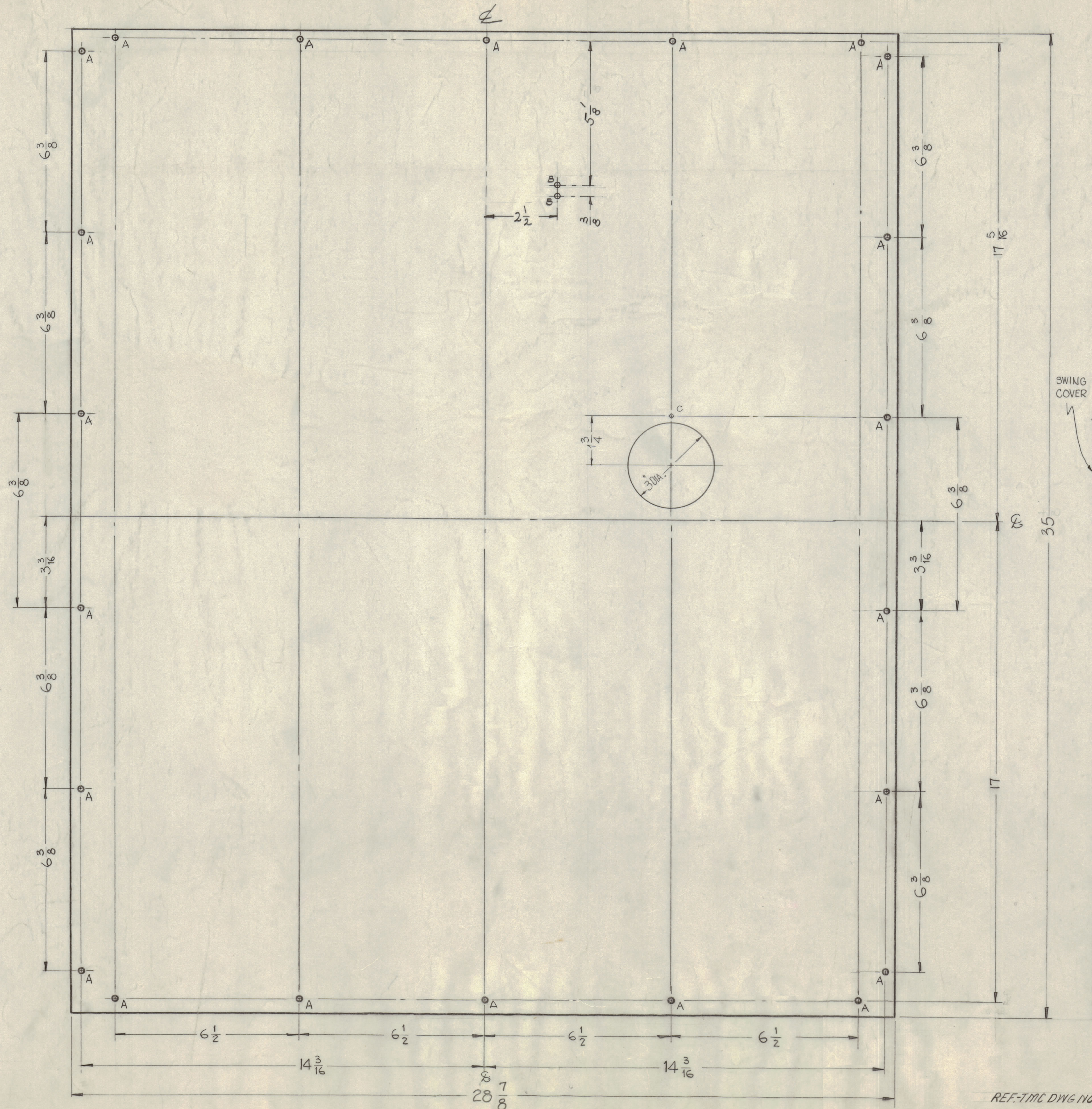


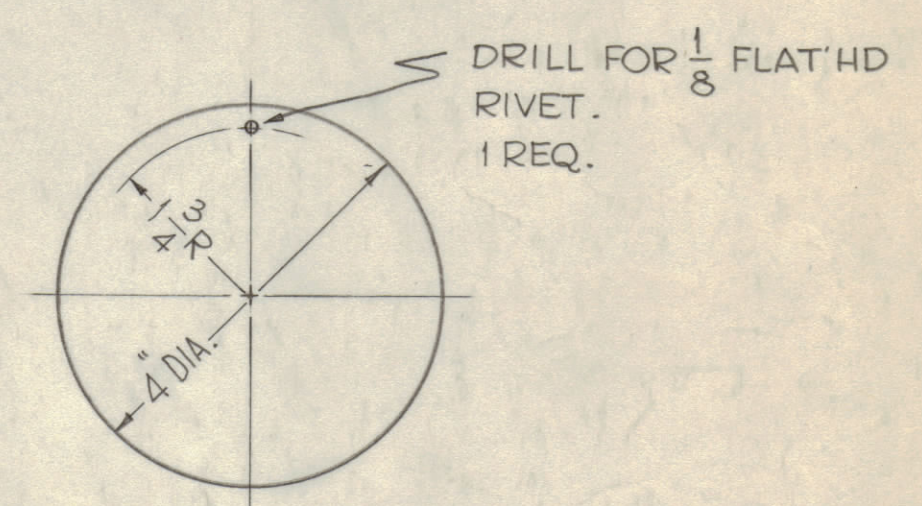
IF IT IS FOUND DESIRABLE TO CHANGE ANY TOLERANCE OR OTHER DETAIL SPECIFIED ON THIS DRAWING NOTIFY THE PURCHASER PROMPTLY.
 MAXIMUM ALLOWABLE TOLERANCES HAVE BEEN DETERMINED AND DEVIATIONS WILL BE CAUSE FOR REJECTION.
 REMOVE ALL BURRS AND SHARP EDGES

NOTICE TO PERSONS RECEIVING THIS DRAWING
 THE TECHNICAL MATERIEL CORPORATION claims proprietary right in the material disclosed herein. This drawing is issued in confidence for engineering information only and may not be reproduced or used to manufacture anything shown herein without permission from THE TECHNICAL MATERIEL CORPORATION to the user. This drawing is loaned for mutual assistance and is subject to recall at any time.
 Property of:
 THE TECHNICAL MATERIEL CORPORATION
 MAMARONECK, NEW YORK



MOUNT IN ALL 1/2\"/>

HOLES	REQ.
A ~ 1/4 (.250) DIA.	22
B ~ 13/64 (.203) DIA.	2
C ~ DRILL FOR 1/8\"/>	1



SWING COVER DETAIL
 MAT'L ~ .064 ALUMINUM
 FINISH ~ 3404 - IRIDITE

NOTE:
 ITEMS 1 & 2 TO BE SUPPLIED & ASSEMBLED BY TMC.

MARK TMC PART NO. 1/8\"/>

ISSUE	ITEM	CHANGED FROM	DATE	CN. NO.	DRAFTS	CHECKER	ENG. APP.
D	ADDED ITEMS 1 & 2		3-7-67	17885	L.A.K.		
C	3	1 3\"/>	8/4	2691	J.C.B.		
	2	Swing Cover detail Added	7-19-60	2600			
B	1	1 1/2\"/>	7-19-60	2600			
A	2	28 7/8 was 29	6/11/60	2477			
	1	35 was 35 1/8					

TOLERANCES	SCALE:
ALL DEC. DIM. ± FRAC. DIM. ± ANGULAR DIM. ±	DRILL PUNCH COMMERCIAL STOCK SIZES AND MANUFACTURERS TOLERANCES ARE NOT INCLUDED.

REF-TMC DWG NO. LD814

REQ PER UNIT	MODEL	PROJECT NO.	ASSY. NO.	DATE
1	AX-208	GPT-40K		1-28-59

REQ. ITEM	PART NO.	DESCRIPTION	SYMBOL
22	FS110-1	STUD, TURN LOCK	A
22	FS109-3	RING, RETAINING	A
.064 THK		THE TECHNICAL MATERIEL CORP. MAMARONECK, NEW YORK	
ALUMINUM		REAR SHIELD, PA FRAME	
MATERIAL WEIGHT PER FC.			
5052-H32			
TYPE & TEMPER			
HEAT TREAT. SPEC.			
S-404 IRIDITE			
FINISH & SPEC. NO.			

MS 1993 D