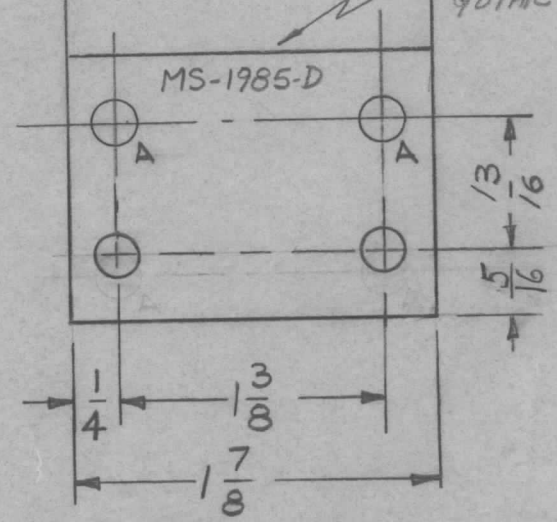
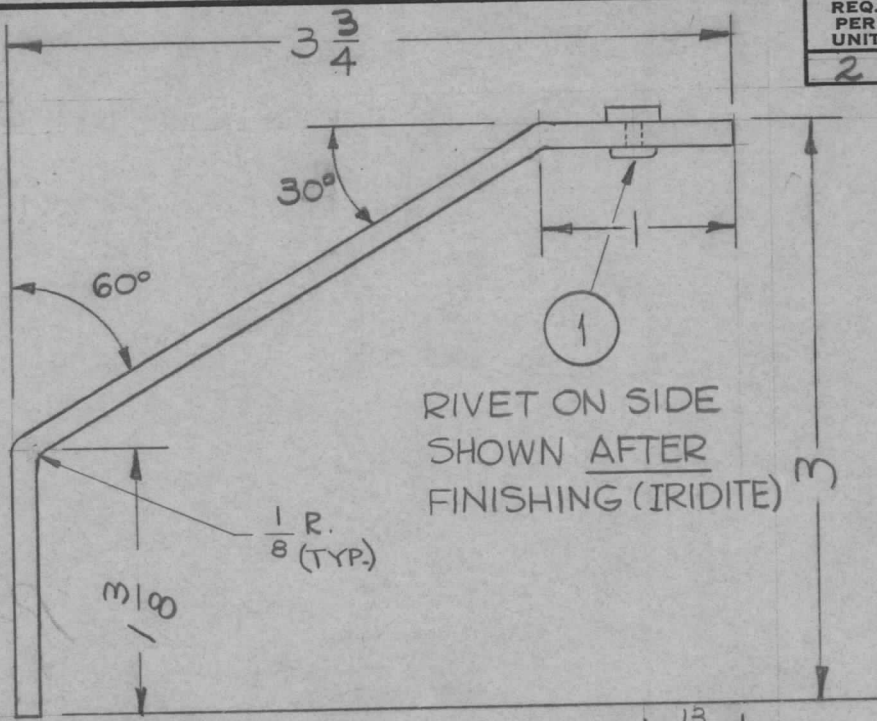
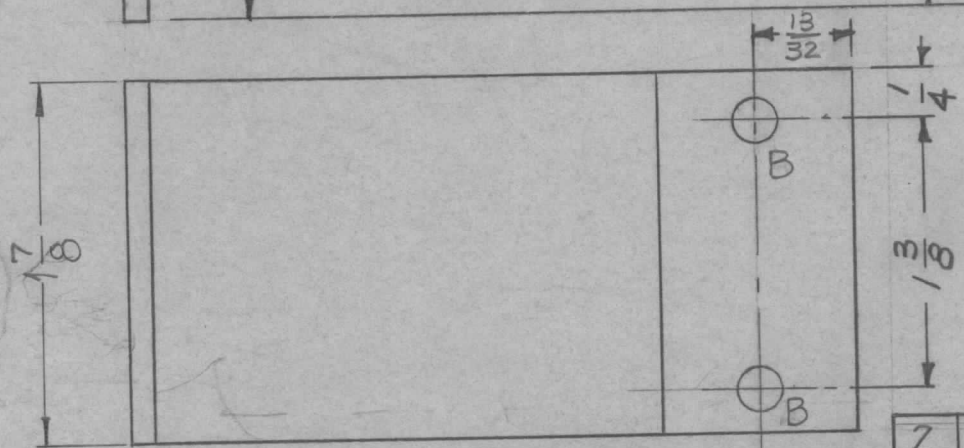


REQ. PER UNIT	USED ON			MS-1985	D
	MODEL	ASS'Y. NO.	DATE		
2	AX-209	GPT-40K	1-19-60		



METAL STAMP TMC
PART NO. 1/8 HIGH,
GOTHIC.



A - 7/32 (.218) DIA. 6 REQ'D.

B - .256 DIA. HOLE FOR 2 REQ.

TE-184-1

2	1	TE-184-1	SPACER, RIVET TYPE	
REQ.	ITEM	PART NO.	DESCRIPTION	SYMBOL
		1/8	THE TECHNICAL MATERIEL CORP.	
		STOCK SIZE	MAMARONECK, NEW YORK	
		ALUMINUM	BRACKET, MOTOR	
		MATERIAL		
		5052 H32	<i>10RILLO</i> 1-19-60	<i>file</i>
		TYPE & TEMPER	DRAWN	CHECKED
		HEAT TREAT. SPEC.	<i>mc</i>	<i>Nan</i>
		FINISH & SPEC. NO.	ELEC. DES. APP.	MECH. DES. APP.
				MS-1985
				D

D	1	DIM 13/32 WAS 1/2	11-27-62	7719	<i>ef</i>	<i>file</i>	<i>file</i>
C	1	1/8R. ADDED	7-31-62	-	<i>G.S.</i>	<i>file</i>	<i>file</i>
B	2	2 "B" Holes were "A" Holes	10/24/60	3250	<i>J.C.B.</i>	<i>file</i>	<i>file</i>
	1	Item 1 Added					
A	1	5/16 WAS 1/4	3-10-60	-	<i>mf</i>	<i>file</i>	<i>file</i>
ISSUE	ITEM	CHANGED FROM	DATE	CH. NO.	DRAFTS	CHECKER	ENG. APP.
TOLERANCES			SCALE: _____				
DEC. DIM. ±			MAXIMUM ALLOWABLE TOLERANCES HAVE BEEN DETERMINED AND ANY DEVIATIONS WILL BE CAUSE FOR REJECTION.				
FRAC. DIM. ±			REMOVE ALL BURRS AND SHARP EDGES				
ANGULAR DIM. ±							

1/64