

TMC PARTNUMBER	LENGTH "A"	WIDTH "C"	MODEL	QUANTITY	ASSEMBLY
MS-1980-1	4-3/4	1-1/2	AX-209	2	
MS-1980-2	4-7/8	1-1/2	AX-209	2	
MS-1980-3	5	1-1/2	AX-209	2	
MS-1980-4	5-1/8	1-1/2	AX-209	2	
MS-1980-5	5-1/4	1-1/2	AX-209	2	

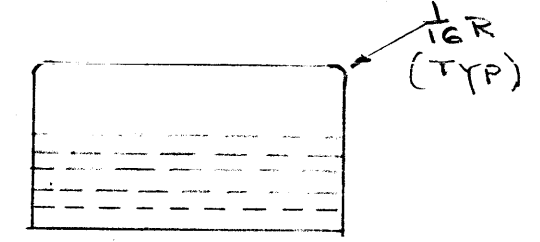
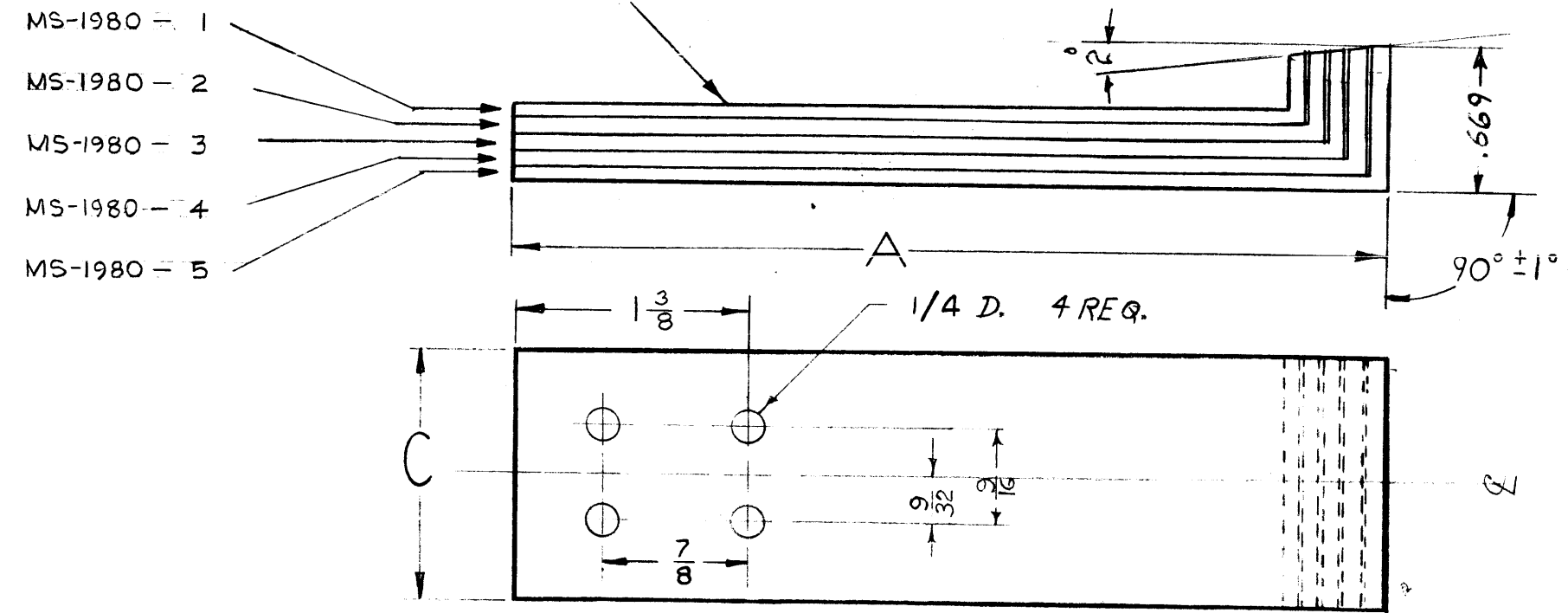
NOTICE TO PERSONS RECEIVING THIS DRAWING
 NOT A
 THE TECHNICAL MATERIEL CORPORATION claims
 proprietary right in the material disclosed hereon.
 This drawing is issued in confidence of engineering
 information only and may not be re-used or used
 to manufacture anything shown hereon without per-
 mission from THE TECHNICAL MATERIEL CORPORA-
 TION of the user. This drawing is loaned for mutual
 assistance and is subject to recall at any time.
 Property of:

THE TECHNICAL MATERIEL CORPORATION
 MAMARONECK, NEW YORK

1. MATCHED SET CONSISTS OF 1 EACH
 MS-1980-1 THRU MS-1980-5

NOTE:
 EACH MATCHED SET MUST BE
 ASSEMBLED, CUT (2°), & MAINTAINED
 AS A SEPARATE SET.

~ NOTE ~
 STOCK MUST BE FLAT,
 W/O DISTORTION



NOTE: (HEAT TREATMENT)
 600° F FOR 2 HOURS IN CLOSED OVEN AFTER
 BENDING & MACHINING.

G	1	4 Holes, 1/4 D. were 3/16 D	3-16-61	4441	Ru	JCB	SB
F	3	DIM. .669 & 90° ± 1° Added	12-9-60	3654	Ru	JCB	SB
	2	IN CHART Lip B Col. DELETED					
E	1	STOCK NOTE ADDED					
	2	FULLY HARD ADDED TO TYPE	9-26-60	3085			
D	1	HEAT TREATMENT NOTE ADDED	9-26-60	3085			
	1	.040 WAS .064 STOCK	6/29/60	1589			
C	2	NOTES ADDED					
	1	MS1980-6-10 DELETED	4/26/60				
B	1	REVISION OF TOLERANCES	4/8/60				

ISSUE	ITEM	CHANGED FROM	DATE	CH. NO.	DRAFTS	CHECKER	ENG. APP.
TOLERANCES			SCALE:				
DEC. DIM. ±			MAXIMUM ALLOWABLE TOLERANCES HAVE BEEN DETERMINED AND ANY DEVIATIONS WILL BE CAUSE FOR REJECTION. REMOVE ALL BURRS AND SHARP EDGES				
FRAC. DIM. ± 1/64							
ANGULAR DIM. ±							

SEE CHART	REQ. PER UNIT	MODEL	PROJECT NO.	ASS'Y. NO.	DATE
		GPT 40K			4-26-60

REQ. ITEM	PART NO.	DESCRIPTION	SYMBOL
	.040	THE TECHNICAL MATERIEL CORP. MAMARONECK, NEW YORK	
	STOCK SIZE		
	BERYLLIUM COPPER	LEAF, CONTACT	
	FULLY HARD		
	SEE NOTE		
	RHODIUM .000025		
	FINISH & SPEC. NO.		
		DRAWN	CHECKED
			FINAL APPROVAL
			MS-1980
			G