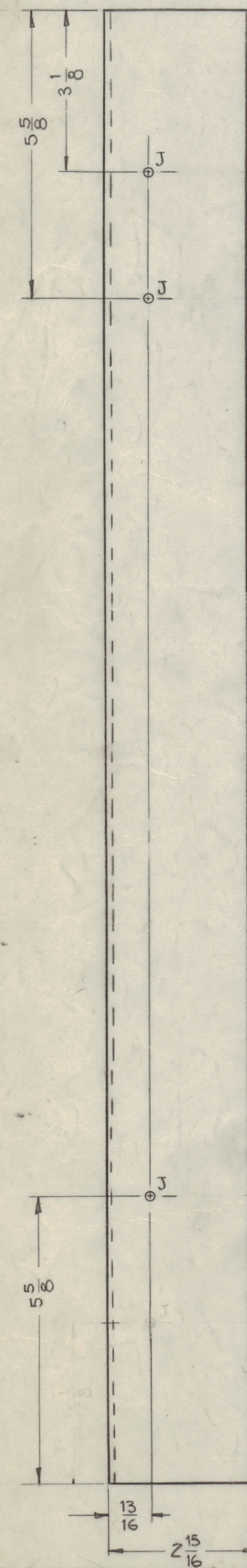
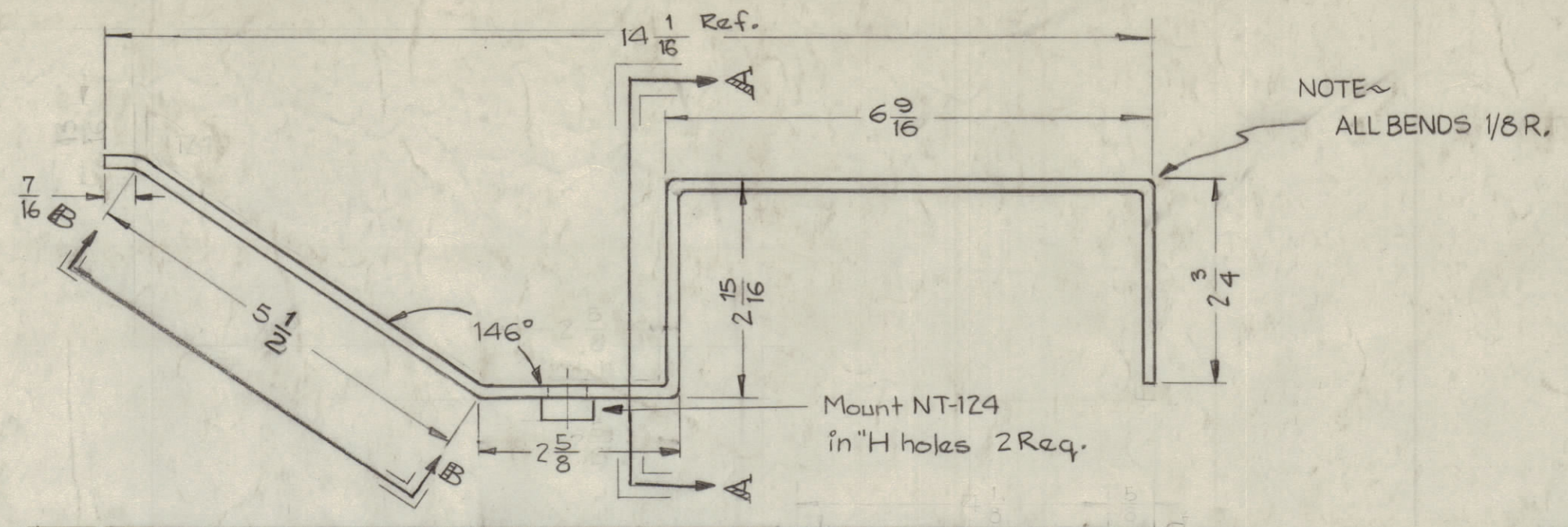
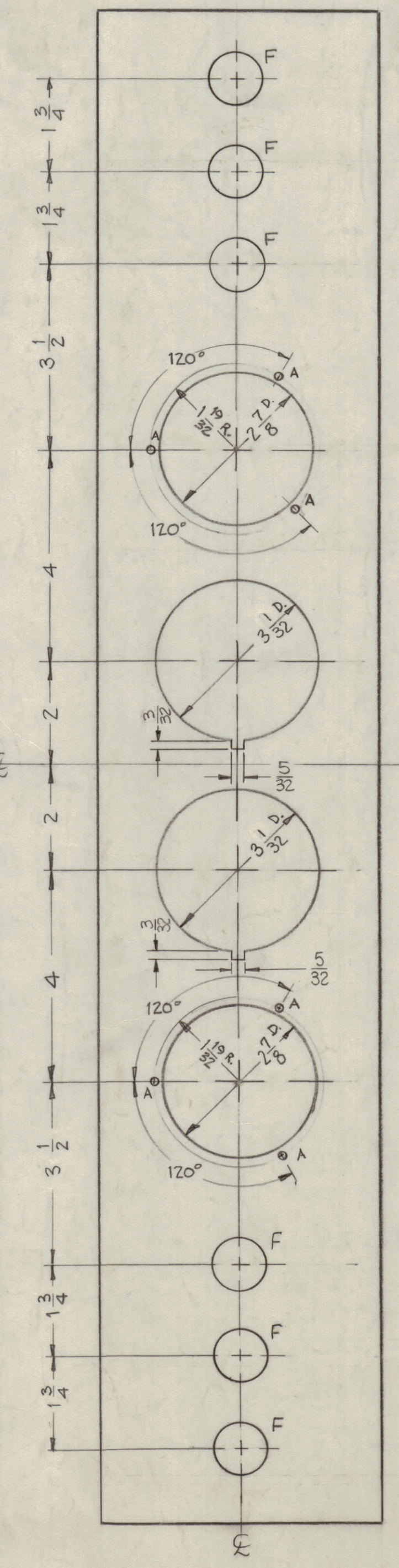


IF IT IS FOUND DESIRABLE TO CHANGE ANY TOLERANCE OR OTHER DETAIL SPECIFIED ON THIS DRAWING NOTIFY THE PURCHASER PROMPTLY.  
 MAXIMUM ALLOWABLE TOLERANCES HAVE BEEN DETERMINED AND DEVIATIONS WILL BE CAUSE FOR REJECTION. REMOVE ALL BURRS AND SHARP EDGES

SECTION A-A



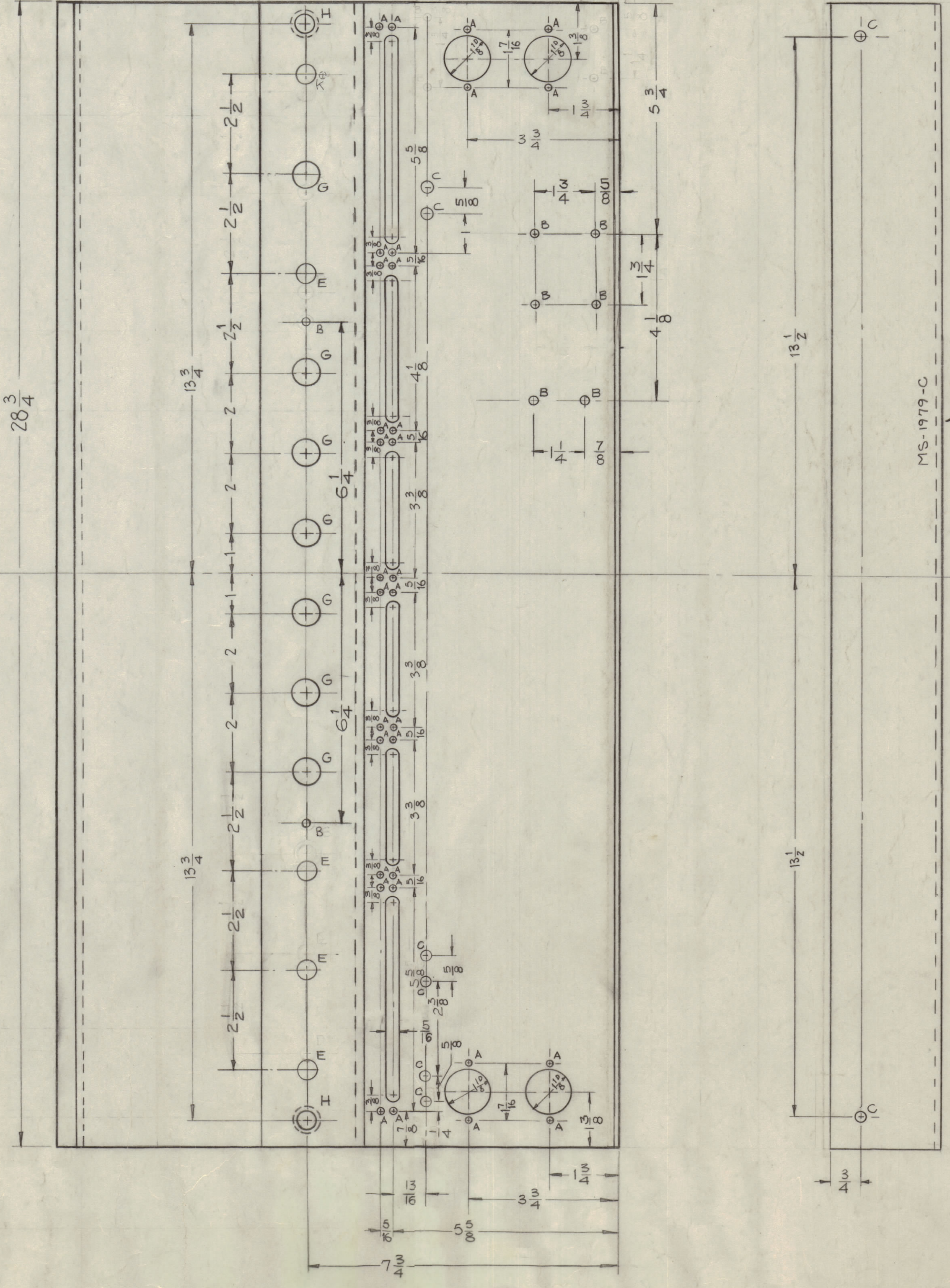
VIEW B-B



HOLES

REQ.	SIZE	REQ.
A	5/32 (.156) DIA.	38
B	3/16 (.187) "	12
C	1/4 (.240) "	8
D	1/8 (.125) "	4
E	1/2 (.500) "	4
F	1 (1.000) "	6
G	11/16 (.687) "	7
H	1/2 (.500) "	2 (For NT-124)
J	9/64 (.140) DIA.	3
K	DETAIL	1

Detailed description of hole H: A hole with a diameter of 1/2 inch, a depth of 100 mils, and a chamfered edge with a radius of 1/16 inch. A note specifies: '#30 DRILL, 1/16" DEEP, FROM REAR OF PANEL'.



FINISH ~  
 S-404 ~ IRIDITE.  
 S-114 ~ ZINC CHROME PRIMER.  
 S-115 ~ TMC SMOOTH GRAY ENAMEL or PRIME & PAINT TO CUSTOMERS SPEC. ONLY

MACHINING ~  
 1- LATERAL BOW OF PANEL MUST BE KEPT TO .031 TOLERANCE.  
 2- MILL ALL EDGES.  
 3- HOLES MUST BE DRILLED.  
 4- PANEL MUST BE FREE OF ALL MACHINING MARKS, GOUGES and SCRATCHES. IF NECESSARY, SAND FRONT OF PANEL WITH N° 120 GRIT SANDPAPER.  
 5- ALL BENDS 1/8 RADII.  
 LD-2044

NOTICE TO PERSONS RECEIVING THIS DRAWING  
 THE TECHNICAL MATERIEL CORPORATION claims proprietary right in the material disclosed herein. This drawing is issued in confidence for engineering information only and may not be reproduced or used to manufacture anything shown hereon without permission from THE TECHNICAL MATERIEL CORPORATION to the user. This drawing is loaned for mutual assistance and is subject to recall at any time.

Property of:  
 THE TECHNICAL MATERIEL CORPORATION  
 MAMARONECK, NEW YORK

ISSUE	ITEM	CHANGED FROM	DATE	CH. NO.	DRAFTS	CHECKER	ENG. APP.
E		DELE. LD-698 LETT. AMY.M.T.	3-6-72	2006	GE	PR	PR
D		CLERICAL CHANGE	2-5-72		HLA	PR	PR
C	1	VIEW B-B (2) HOLES 3/32 D. WAS 5/32 D.	10-7-61	7408	PR	PR	PR
B	2	NOTCH ADDED ON 3 DIA. HOLES	5-15-62	6702	PR	PR	PR
A	2	ADDED 2 C HOLES	3/7/60		PR	PR	PR

TOLERANCES: DEC. DIM. ± 1/64; FRAC. DIM. ± 1/64; ANGULAR DIM. ± 1/64

SCALE: DRILL PUNCH, COMMERCIAL STOCK SIZES AND MANUFACTURERS TOLERANCES ARE NOT INCLUDED.

REQ. PER UNIT	MODEL	PROJECT NO.	ASSY. NO.	DATE
1	KIT 180	AR-116	GPT-40K	1-24-66
				1-22-60

REF: LD-693

REQ. ITEM	PART NO.	DESCRIPTION	SYMBOL
2	1	NT-124 CAPTIVE INSERT	
1/8 THK		THE TECHNICAL MATERIEL CORP. MAMARONECK, NEW YORK	
ALUMINUM		FRONT PANEL, RELAY	
MATERIAL WEIGHT PER FC.			
SEE NOTE			
TYPE & TEMPER		DR. Man	16
SEE NOTE		DRAWN	ELEC. DES. APP. MECH. DES. APP.
HEAT TREAT. SPEC.		CHECKED	FINAL APPROVAL
SEE NOTE			
FINISH & SPEC. NO.			

MS-1979E

MS-1979  
 6161